

RADIO-TV

TIMES

July 1979

NATIONAL LIBRARY OF NIGERIA
RECORDED
12 DEC 1979
SERIALS & DOCUMENTS
RECORDS SECTION

**RETURN TO
CIVIL RULE**

**48 Million Nigerians
Go To Polls**

NATIONAL LIBRARY OF NIGERIA
RECEIVED
5 SEP 1979
Legal Deposit
Signature: *Mdekola*



20k

ELECTION EDITION

LETTERS

CRACKED RECORDS

PLEASE allow me space to comment on the music service rendered to the public by FRC II.

It is obvious that the station is funky. But it is annoying when a cracked record is unknowingly put on and the stylus getting to the cracked spot is left there for a fairly long time to produce a monotonous sound before correction is made.

Are the disc jockeys not aware of this frequent fault? Do they leave the turntable room for elsewhere while the music is on?

Another thing is that the disc jockeys fail to apologise to listeners after correcting faults.

I would wish that such errors should be avoided in future.

M. I. Asikpa
Maroko, Lagos.

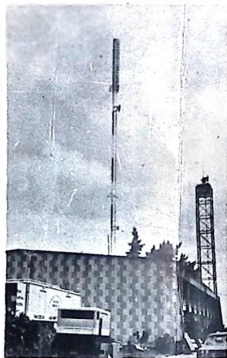
KEEP IT UP

AS a regular viewer of NTV Channel 10 Lagos, I am congratulating the authorities on the introduction of "Slow motion" in the sports programmes.

I watched the Commonwealth title fight between Obisia Nweskpa and Jeff Malcolm, it was just fantastic. I hope you won't relent on your good efforts.

Once more, more grease to your elbows.

William O. Thomas.
Idi - Oro, Lagos.



Nigerian Television House, Victoria
- Island, Lagos.

SEND ME A COPY

The reason for my letter is to ask that you send me a copy of Radio/TV. Times every month.

Stephen Enamio
Benin - City.

You may subscribe to Radio-T.V. Times by sending a Postal Order for N2.40 to Federal Radio Corporation of Nigeria, Publications Unit, 45, Martins Street, Lagos. Or you may obtain copies every month from your vendor at 20k a copy.



FRC II building at Martins Streets Lagos,

RECEIVED

5 SEP 1979

LETTERS Legal Deposit

Signature *AWOTUNDUN FELIX*
PEN PAL

HOW ABOUT STORIES?

I AM an aspiring young writer, and a keen listener of your literary programmes, as well as a fan of your monthly, Radio/TV Times.

I find both immensely entertaining and would like to begin sending you contributions in form of short stories.

I would like you to tell me the precise address to which to send my contributions, the lengths they must be (or any such restrictions) and the rates you pay.

Whale Alonge
Benin - City.

If you have a good short story, please send it down to the Editor for consideration. The story should not contain more than 2,500 words, type-written in double space. The payment, if published, depends on the assessment of the quality of the story. The Editor's address is 45 Martins Street, Lagos.



Awotundun Felix

AWOTUNDUN FELIX wants female pen pals from all over the 19 states of the Federation and anywhere the Radio/TV Times reaches. His hobbies are reading, writing, drama jokes music, travelling and swimming. He lives at C.V.D. MAKOKO, P. O. BOX 542, LAGOS.

COVER

From July, this year over 40 million Nigerians will go to the polls to vote for candidates to the Senate. That's just the beginning of the series of elections into the various legislative houses in the country as laid down by the new constitution. The whole exercise will end in September this year. It is your civil right to cast your vote on each polling day. The Ballot Box on our front cover this month is a replica of the one in which you have to drop your Ballot Paper for the candidate of your choice - be he or she a Senator, Governor, House of Representatives Member or Executive President.

CONTENTS

Letters	2
Radio & Presidential System of Government	4
Electoral Offices: Maintaining Law and Order	5
Guide To Election Participants	8
Public Transport System	10
News Agency Agreement	11
Maternal And Child Health Care Closer Nigeria's Ties with the Soviets	14
Africa, Britain & Zimbabwe	15
OFN - Now Three Years Old.....	16
Bassey Black: Leader of Natty Messiah.....	17
Nigeria's Natural Rulers.....	18
4th National Sports Festival.....	19
Television & Radio Programmes	20



NIGERIAN RADIO-TV TIME
Programme Journal of the Federal Radio Corporation of Nigeria.

Volume 11 No. 7
July, 1979.

PUBLISHERS
Federal Radio Corporation of Nigeria
Broadcasting House,
Ikoyi, Lagos.

EDITOR
Tijani Lawal

SENIOR SUB-EDITOR
Bukola Olatapo

GRAPHIC ARTIST
Ebong Ukot

ASST. GRAPHIC ARTIST
David Aruayingho

COMMERCIAL MANAGER
Folorunso Popoola

STAFF PHOTOGRAPHER
Arunihu Ibegbu

ASST. STAFF PHOTOGRAPHER
Oyetayo Idowu

All Correspondence to:
Publications Unit,
45, Martins Street,
Lagos.

Registered at the G.P.O. as a Newspaper.
Published every month by the Federal Radio Corporation of Nigeria, Public Relations Department, Broadcasting House, Ikoyi, Lagos, and printed by the Skyway Press Ltd., Kudeti Street, P.M.B. 1204, Ikeja, Lagos.



RADIO & PRESIDENTIAL SYSTEM OF GOVERNMENT



Mr. George Bako, FRCN Director-General addressing the participants

A workshop on Radio and Presidential System of Government was held recently at the External Studio 9 of the FRCN Lagos. The opening address was delivered by the Director-General of Federal Radio Corporation of Nigeria (FRCN), Mr. George Bako. Radio journalist and eminent media personalities from the United States, FRCN, and State Radio Stations in the country were present.

The Workshop was significant in that it has to do with the political situation in the country, especially as the theme of the Workshop concerned the mass media and its relationship to the presidential system of Government which Nigeria will start to operate as from October 1, this year.

The Workshop was jointly organised by the Federal Radio Corporation of Nigeria (FRCN) and United Commu-

nications Agency of America (UCA).

A cocktail party was held at Federal Palace Hotel, Lagos, to mark the end of the workshop.

In the interest of thousands of our readers both in Nigeria and abroad, the full text of the scintillating address is hereby produced.

Guest-Lecturers, our friends from the United States, my colleagues from FRCN and State-owned Radio stations, it is my pleasure to welcome you to this workshop on Radio and the Presidential System of Government.

As you are well aware, when the present military administration took office in July 1975, some four years ago, one of their first major decisions was a declaration of their intention to return the government of this country to civilians by 1st October

1979. They have worked conscientiously and assiduously towards the attainment of that goal ever since.

Chief among the major steps they took towards the implementation of their political programme were:—

The appointment of a Constitution Drafting Committee made up of experts and other experienced Nigerians from all walks of life to help draft a new constitution for the country.

The appointment of a Constituent Assembly to consider, debate and review the draft constitution to suit the political, social and economic aspirations of the people of this country and finally after the constitution had been approved by the Supreme Military Council, the establishment of Federal Electoral Commission, popularly known as FEDECO, which could supervise the elections that would usher in the first civilian government since January 1966.

As you know, our wise men opted for the Presidential System of Government, which is not a carbon copy of the American system, but nevertheless it has some striking similarities to it such as an elected President, an elected National Assembly and at the State level, an elected Governor and the State Assembly.

Nigeria and Nigerians have therefore arrived at the tresh-hold of our major objective — Return to Civil Rule.

Considering the developing nature of our country, and appreciating the increasing need for the media to accel-

MEDIA

lerate the rate of disseminating information and educating the masses of this great country, Broadcasting has assumed the enviable role as the foremost medium by which above objectives can be quickly achieved.

With the first elections just few weeks ahead, there is the need to quickly recapp on what we have done so far in order to appreciate the need, importance and gravity of our position in the coming weeks before the commencement of voting on the 7th July, 1978.

Put in a nutshell, the Federal Military Government, having appreciated the value of Radio Broadcasting in all its ramifications, decided to maximise the positive effect of the medium by re-organising Radio Broadcasting in Nigeria. By so doing, we became better oriented for grassroots broadcasting and have created the necessary awareness as to events happening throughout the country.

We have also succeeded, through our nationally oriented programmes in fostering the much desired unity which has been identified as the major horseback on which our country could ride on to greatness. Through the provision of the necessary infrastructure arising from the re-organisation, we have now fully identified ourselves as the servants of the people with the high degree of credibility and acceptance such that the average Nigerian has accepted Radio as the enviable vehicle for creating the necessary atmosphere, the high degree of political awareness, the understanding of basic rights and privileges and the need for all Nigerians to deliberately pull themselves together, in all positive ways in the interest of the country.

Our expectations therefore, of your role in the next few weeks are not only to consolidate on all that had been achieved so far but to consciously resolve to make sure that before the voting date, each of you, participants



A cocktail party was held at the Federal Palace Hotel, Lagos to round off the Workshop. Participants are be seen in this picture.

in this workshop had been able to educate the masses on the provisions of the Electoral Decree and the major high points which constitute the cornerstone of our own Presidential System.

The Presidential System can succeed only if the generality of the public understand its role, the importance of the individual's vote and the gravity of the decision as to who to cast his vote for. Although Nigerians have attained a high degree of political awareness within the past thirteen years, we are still developing, hence the need for you, participants, not to loose sight of our 'developing state' by apeing and copying 'foreign' journalists' method and presentation of news.

We must always appreciate the "Nigerianess" of all aspects of our development and background with a



Sunday Young-Harry (left) and Biola Olasope at the party

view to presenting our reporting on Radio as objective as possible but with high degree of responsibility and patriotic attitude.

After all, we are all Nigerians. Each of us have a stake in the success of this country and therefore the earlier we approach our problems with the commitment of our entire endeavours to the survival of the country, the better: for each and every one of us.

It is with this dedication that we hope you will approach the covering of the events leading to the forthcoming elections by helping each citizen to be sufficiently informed of what each candidate stands for and objectively explain all the cardinal issues which would help the average voter determine who to vote for. Our role is mainly to present facts as we see them and to encourage all Nigerians to be sportsmanlike after the results have been announced as in the final analysis, the Nigerian Presidential System should create the atmosphere where there should be no clear line of demarcation as to who is more Nigerian between the Executive, the Legislature and the governed.

Ladies and Gentlemen, I welcome our participants from all Radio Organisations in the country to this workshop and would like to express our appreciation to our friends from outside the country who are here, to share their experiences with us in the hope that the uniqueness of the Nigerian experience will provide the mutual platform for global understanding.

It is my pleasure to declare this workshop open.

ELECTORAL OFFENCES

—Playing Your Part To Maintain Law, Order

In order to make the general elections into the various legislative houses, now starting from July 7, this month, free, fair and peaceful, the Electoral Commission has made necessary arrangements with the Nigeria Police as regards the maintenance of Law and Order during the period leading up to and including the polling day.

In this connection, the Electoral Decree No. 73 of 1977 has made adequate provisions to deal with those who disturb the peace and commit electoral offences either before, during or after the polling day. These are contained in Part IV of the Decree dealing with Electoral Offences.

Therefore, for the benefit of thousands of our readers, most of whom are voters and for the information and guidance of millions of the Nigerian electorates, the Radio/TV Times is publishing salient parts of the provisions of the Decree. This is with the hope that the effect of the publication will aid the achievement of the objectives desired, that is, FREE, FAIR and PEACEFUL ELECTIONS.

OFFENCES IN RELATION TO REGISTRATION

Any person who —

without proper authority, destroys, mutilates, defaces or removes or makes any alteration in any notice or document required for the purposes of registration under this Decree; or

knowingly gives false information or makes a false statement with reference to any application for registration of his name or with reference to any objection to the retention of the name of a person on the register of voters; or

procures himself to be, or does any act whereby he is by what name or description soever, included in the register of voters for more than one constituency or more than once in the register or voters for a constituency in which he is entitled to be registered; or



publishes any statement, rumour or report which he knows to be false or does not believe to be true so as to prevent persons who are qualified to register from registering as voters; or

makes in any record, register or document which he is required to prepare, publish or keep for the purpose of registration, any entry or statement which he knows to be false or does not believe to be true; or

impedes or obstructs a registration officer or an assistant registration officer or a revising officer in the performance of his duties; or

without proper authority, wears the badge of a registration or assistant registration officer or wears any other badge purporting to be the badge of a registration officer or assistant registration officer; or

forges a registration card, shall be guilty of an offence and liable on conviction to imprisonment for a

term of six months without the option of a fine.

Every person commits an offence who does any of the following, that is to say—

forges any nomination paper; wilfully defaces or destroys any nomination paper; delivers to an electoral officer any nomination paper knowing it to be forged; signs a nomination paper as a candidate in more than one constituency; forges any ballot paper or official mark on any ballot paper or official mark on any ballot paper or return; wilfully destroys any ballot paper or official mark on any ballot paper; or any certificate or return; without proper authority supplies a ballot paper to any person; wilfully places in any ballot paper any unauthorised paper; wilfully removes from a polling station any ballot paper whether or not the ballot paper was issued to him in that polling station; without proper authority, destroys or in any other manner interferes with a ballot box or its contents or any packet of ballot papers then in use for the purpose of the election; signs a nomination paper consenting to be a candidate at an election knowing that he is ineligible to be a candidate at the election; without proper authority prints a ballot paper or what purports to be or is capable of being used as a ballot paper at an election; being authorised by the Electoral Commission to print ballot papers prints more than the number or quantity the Commission authorised; manufactures, constructs, imports into Nigeria, has in his possession, supplies to any election officer or uses for the purpose of an election, or causes to be manufactured,

Turn to page 10

Making Elections Free And Fair

By Atilade Atoyebi.

IN about a few days from now, the people of Nigeria will have the opportunity to perform their civic duty by electing persons who will govern the country as from October this year.

These elections are important because they form the crucial aspect of the present military regime's intention to hand over power to civilians. As such, a voting procedure has been designed to create the necessary pre-condition for free and fair elections.

For example, unlike the previous elections, those of this year will have only 500 voters for a polling booth. Also, only one ballot box will be used in each of the polling booths for candidate of all the five political parties. And unlike the blank ballot papers of the past, the new ballot papers will each carry the names and symbols of the five registered political parties and it is left for each voter to mark with a finger print the party of his or her choice.

Having done the marking secretly, each voter will put the ballot paper in a prescribed envelope already handed over to him, seal up the envelope and deposit it in the ballot box placed on the desk. This will be done in the full view of two representatives of each of the five contesting parties, and officials of the Electoral Commission.

While the mass media have been carrying this information to every nook and corner of the country, officials of the Federal Electoral Commission have found out that some element of face-to-face communication would be necessary especially to answer a number of questions agitating the minds of the electorate. Hence, the decision by the Resident Electoral Commissioners to go on an extensive tour of their areas of jurisdiction. As they go round, the Commissioners address the cross-section of the population, show the Commission's film on voting procedure and give enough room for the people to ask questions on the conduct of the elections.



Chief Michael Ani, Chief Electoral Commissioner.

In the process, the Commissioners make the point very clear that no political party can maintain thugs for the sole purpose of harrasing the people to prefer one party to another. Consequently, the people have been asked to report to the Police any move by anyone to recruit thugs to disrupt the smooth arrangements made for free and fair elections.

Furthermore, the people are being reminded that the choice of what party to vote for is theirs and they should not accept any form of inducement designed to influence their decision.

It has of course been frequently emphasised that each voter has an important civic duty to perform by actually going out to cast his vote. His vote can make all the difference in that a candidate can win or lose by a single vote.

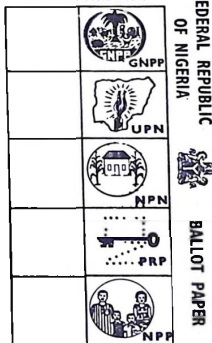
The Electoral Commissioners have also been explaining to the supporters of the five registered political parties that none of them has any power under the law to disrupt the campaign gathering of another political party.

Above all, the Federal Electoral Commissioners are quick in pointing out the fact that the decree guiding the conduct of this year's elections make adequate provisions for penalties in form of jail without the option of fine in many cases.

By and large, even the advanced countries of the world take public enlightenment on voting procedure very seriously. This is because the proper understanding of how to vote is important for the realisation of the objective of a properly conducted election. The current public enlightenment efforts by the Federal Electoral Commission should therefore be allowed to succeed by Nigerians in the way they respond to achieving smooth, free and fair elections.

Federal Republic of Nigeria
PRESIDENTIAL
General Election 1979

PRESIDENTIAL
General Election 1979



Specimen ballot paper showing the symbol of each party contesting elections.

How to cast Your Vote

Guide To Election Participants

IF you are a citizen of Nigeria, male or female, and up to 18 years or above and your name is registered as being entitled to vote, then this "Guide To Election Participants" prepared by FEDECO will help you on the polling days, the first of which comes up on July 7, because you are qualified as a Voter.

On polling day, you should armed with your voter's registration card, present yourself at the polling station in the constituency in which your name is registered. You should do so within the hours fixed by the Electoral Commission for the polling, that is to say between the hours of 7 o'clock in the morning and 6 o'clock in the evening.

AT THE POLLING STATION

The voter shall present himself to a presiding officer:

A. Question to be put to the Voter:

A poll clerk may, and if required by the candidate or a polling agent shall, at the time of the voter's application for a ballot paper but not afterwards, put the following questions to him (the voter):

- (i) "What is your name and where do you live?"
- (ii) "Have you already voted at the present election at this or any other polling station?"

B. Issue of Ballot Papers:

The presiding officer, after satisfying himself that the name of the person intending to vote appears on the register of voters, and that such a person has not already voted, shall:

- (i) mark the voter's registration card in such a way as to indicate that it has been presented and used at the election;

- (ii) issue the voter with a ballot paper and envelope; and
- (iii) sign his name on the back of the envelope over the official stamp.

C. Manner of Voting:

The Voter:

- (i) should see that the ballot paper, before it is handed to him, is stamped with the official mark;



Provision is made for the handicapped, like this guided blind man, to vote.

- (ii) will go into one of the voting compartments or booths and, with an indelible ink provided in the compartment, make the thumb impression on the blank space on the ballot paper at the left of the symbol of the political party sponsoring the candidate for whom he intends to vote; the photograph of the candidates and their respective party symbols will be displayed in the polling booth to enable the voter to identify the person he wishes to vote for;
- (iii) will then fold up the ballot paper and insert it in the envelope and seal the envelope;
- (iv) will come out from the compartment, have thumb inspected by the presiding officer to satisfy the presiding officer that he has

made his mark on the paper, and, in the full view of the presiding officer and all other present:

- (a) deposit the envelope containing his vote in the ballot box; and
- (b) have his left thumb nail marked with indelible ink.

N.B. The presiding Officer may hold the envelope between his thumb and fore-finger for the purpose of checking that it actually contains a ballot paper and is not empty.

D. Blind and Incapacitated Voters:

A voter who is blind or is otherwise unable to distinguish symbols or who suffers any other physical disability may be accompanied into the polling station but a friend or relative shall, after informing the presiding officer of the disability, be permitted to accompany the voter into the voting compartment and assist the voter to make his left thumb mark, on the left side of the symbol chosen by the voter, to insert the ballot paper in the envelope and to seal the envelope.

E.(i) If the voter inadvertently spoils the ballot paper, he can return it to the officer, who will, if satisfied of such inadvertence, give him another paper:

- (ii) If the voter votes for more than one candidate, or places any mark on the ballot paper by which he may afterwards be identified, his ballot paper will be void, and will not be counted.
- (iii) If a voter inserts more than one ballot paper in the envelope supplied to him by the Presiding Officer, all the ballot papers

PUBLIC TRANSPORT SYSTEM

TO start with, the Kaduna Transport Authority has put sixteen buses on the road. These buses are expected to ply Kaduna township roads as well as serve local government headquarters in the state. The Authority has a plan to introduce goods and parcel handling service for its customers.

The Kaduna State government like some others in the Federation, must have decided to go into the transportation business to solve part of the problems facing Nigerian workers. With urbanisation and its attendant expansion in administrative, commercial and industrial activities, many Nigerian towns and cities had always needed an effective and reliable public transportation system to enable people to move round.

For a while, the matter was left in the hands of private entrepreneurs to provide some means of transport for the people. Even in the Federal Capital, Lagos, the situation remained as such until the city Authorities decided to take over the existing viable private city bus service with the hope of making it much better. Other cities similarly tried to run public bus services.

With the creation of states, many state governments realised that city transportation business was so capital intensive that they had to come to the rescue of their local authorities.

Funds were made available for the purchase of buses and in a few cases taxi cabs to supplement whatever the local governments have been doing. Later, a number of states such as Bendel, Plateau and Kwara, widened the scope of their bus services to include inter-city and inter-state journeys.

The people were quite enthusiastic in taking full advantage of the various cross-country transport services. But the question may be asked: what is the position of such mass public transportation system today? The fact cannot be hidden that while Kaduna State is now launching its transport system, some of its counterparts which embarked on a similar venture have been forced by circumstance to wind up their own transport business.

The large city of Ibadan, capital of Oyo State which was one of the earliest to introduce a service, now has no publicly run and efficient mass transportation system to boast of. The history of those which have been in operation reflect serious ups and downs requiring re-organisation and sometimes change of management. This, for example has been the experience regarding public transportation in Lagos.

Truly, all the governments that went into transport business had done

so with good and laudable intentions. But some have now been beaten into a retreat because of inefficient and inexperienced management. There was, for instance, a case of corruption established against some members of staff of some state transport corporations.

Furthermore, the inability of the management to create a perpetually open avenue for obtaining spare parts led to the collapse of their operations since many buses were grounded for lack of spare parts. There were quite a number of them too who could not keep a competent and hard working maintenance staff. This breaking down before new ones are purchased.

Ironically, some dedicated private individuals have proved that mass transportation business can be run profitably. Unfortunately, they cannot meet the ever growing demand. The result is that some people, exploiting the situation put anything that can move on the road to make money in utter disregard of the comfort of passengers.

This experience should buttress the argument that the Government should not relent in trying to solve the problems that have rendered public transport corporations ineffective. An effective transport system for the general public is a top priority.



Struggling to enter the bus can be hectic

POLITICS

From page 6

constructed or imported into Nigeria, supplied to any election officer, or used for the purpose of any election, any ballot including any compartment, appliance, device or mechanism on or by which a ballot paper may or could be secretly placed or stored in, or having been deposited during polling may be secretly diverted, misplaced or manipulated;

and shall be liable on conviction to imprisonment for twelve months without the option of a fine.

An attempt to commit any offence under this section shall be punishable in the same manner as the offence itself.

Where any person is convicted of an offence under this section he shall in addition to any penalty imposed on conviction be deemed to be guilty of a corrupt practice under a section of this Decree and that section shall have effect accordingly.

In any prosecution for an offence under this section it shall, where appropriate, be sufficient evidence of ownership if the property in the papers, boxes and instruments is stated to be in the Electoral Commission until the contrary is proved.

DISORDERLY BEHAVIOUR AT POLITICAL MEETINGS

Any person who, at a political meeting held in any constituency after the date when an election has been announced—

acts or incites another to act in a disorderly manner for the purpose of preventing the transaction of the business for which the meeting was convened; or

has in his possession an offensive weapon or missiles —

shall be guilty of an offence and liable on conviction to imprisonment for twelve months without the option of a fine.

PROPER USE OF REGISTRATION CARDS

Any person who—
being entitled to a registration card, hands it when received by him to some person other than an officer appointed and acting in the course of his duty under this Decree;

not being an officer appointed and acting in the course of his duty under this Decree, receives any registration card in the name of some other person; or

has in his possession more than one registration card,

shall be guilty of an offence and liable on conviction to a fine of ₦200 or to imprisonment for one year, or to both.

IMPROPER USE OF VEHICLES

No person shall provide for the purpose of conveying any person to a registration office or to a polling station any Government or local government vehicle or boat, or any vehicle or boat belonging to a public corporation except in respect of a person who is ordinarily entitled to use such vehicle or boat.

Notwithstanding the provision of sub-section above the Electoral Commission may by notice in the *Gazette* restrict or limit the use of vehicles of any particular description or any water transport at an election.

Any person who contravenes the provisions of this section shall be guilty of an offence and liable on conviction to a fine of ₦100 or to imprisonment for six months, or to both.

CORRUPT PRACTICE

If at an election, a candidate commits or is deemed under this Decree to have committed any offence whereby he is guilty of any corrupt practice and that candidate is elected, his election shall be invalid.

For the purpose of this section, a candidate shall be deemed to have committed corrupt practice, if it was committed with his knowledge and consent, or with the knowledge and consent of any person acting under the general or special authority of the candidate with reference to the election.

Every corrupt practice shall be an offence under this Decree.



A campaign rally. Penalties await electoral offenders.

NEWS AGENCY AGREEMENT

— Move To Balance Information Equation

A major fault many modern scholars and other observers of international communications have constantly found with Western news media is their prejudicial reportage on the so-called developing nations. After decades of futile complaining, most of these nations have risen to take definite action to rectify matters. Nigeria is part of this school of action.

The author here takes a look at the way things are presently, following agreements between News Agency of Nigeria and some foreign news agencies.

Recently, the News Agency of Nigeria (NAN) signed agreements with several foreign news agencies on the exchange of news. The first was with the Associated Press based in the United States. Others were with the Soviet agency, TASS, the French news agency, AFP and the German agency, DPA.

The implication of the agreements is that the mass media in this country will no longer deal directly with overseas news agencies. NAN will serve as a link between the foreign agencies and Nigeria. The News Agency of Nigeria will therefore be in a position to correct any false information being disseminated about Nigeria in the foreign press. Since it is represented in most parts of the Federation, it will be able to report to the outside world events about our development in all fields.

By Joe Nwokedi



Mr. Onuora Nzekwu, General Manager, News Agency of Nigeria (NAN)

As a member of the non-aligned nations movement, Nigeria is concerned with the imbalance in world flow of information which, in particular, has been to the disadvantage of the developing countries. This is because the news about these countries emanate mainly from the big news agencies of the world.

Their reporters who are stationed in the developing nations feel unconcerned about development programmes of the countries where they are posted. Instead, they go for sensational and mostly negative news items, particularly political upheavals which instantly attract the attention

of their people. In fact, there have been instances when foreign reporters send fabricated stories to their news agencies or organisations.

For instance, after the foiled coup in this country in February 1976, Reuters News Agency carried false reports by its men in Lagos that inter-ethnic fights had broken out in parts of the country. The agency even went further to say that many Nigerians were already fleeing to their states of origin. Again last year, the Western press frequently put out untrue reports of piracy in our territorial waters. The two incidents were fabrications intended to embarrass the Federal Government whose patriotic economic programmes and frontline role in the liberation struggle in Southern Africa cut across Western interests.

Correcting the negative picture painted about developing countries in general has been of particular concern to the governments and peoples of developing nations for some years now. To this end, the developing countries in 1975 submitted to the UNESCO Conference on Mass Media Communication held in Nairobi, Kenya, a draft resolution seeking to give them control over the news emanating from their areas.

Since then the non-aligned Nations have established a news pool with Headquarters in Belgrade, Yugoslavia. The pool will be given the responsibility of collecting and disseminating information about member-states of the Movement to all news agencies in the world. Also, African Countries at a recent meeting of their Ministers of Information in Addis Ababa, Ethiopia, adopted a resolution establishing the Pan-African News Agency.

With time, all these efforts by the News Agency of Nigeria and those of similar organisations in developing countries will result in a judicious coverage of events reflecting the true picture of Nigeria and other non-aligned nations.



Signing of agreement between NAN and Associated Press of New York.

Maternal and Child Health Care

A Profitable Socio-Economic Investment

It is no longer socially acceptable that high cost technology is available to a small minority, while the majority of the rural population and the urban fringes have no care apart from whatever traditional care might be available. Although accurate data are wanting, it can safely be said that in 1978 the vast majority of mothers and children in the world were not receiving any organized health care.

OURS is perhaps the first generation in the history of mankind that has the knowledge and resources to achieve health improvement on a world scale. Yet many children die early in life from diseases that could have been prevented, and hundreds of millions of lives are thwarted by ill-health, malnutrition and infection.

In the past few decades, science and technology have taken giant strides in the field of health, but the benefits are largely enjoyed only by privileged communities of the world. Vast rural and peri-urban populations of the developing world have remained untouched by these advances. Official health care systems in many areas are not reaching the people most in need.

Disparities in health care are seen not only between countries but also within countries where, often, a disproportionately high amount of the limited health resources is spent on services for the urban elite at the cost of the other sectors of the population. The worst sufferers under these conditions are the two most vulnerable groups: mothers and children.



The problem calls for a new approach to the development of health care. This was recognized by the International Conference on Primary Health Care held in Alma-Ata in September 1978, when it adopted a Declaration pleading for social justice in health and an equitable distribution of health resources.

The Conference proclaimed a main social target for governments



Mothers with their babies at a health centre

and the world community: "the attainment by all peoples of the world by the year 2000 of a level of health that will permit them to lead a socially and economically productive life". The key to attain this target, the Conference declared, was the primary health care approach.

The primary health care concept seeks to bring about the overall promotion of health by supporting the individual, the family and the community in assuming responsibility for their own health. It involves organizing other levels of the national health system in support of primary health care which responds to the priority essential needs of the masses of people.

The active participation of the community is sought to define its needs and find ways to meet them. Full use is made of the available community and national resources. Other sectors, such as education, agriculture, housing, public works, information and communications, and industry are mobilized along with health.

Although no single model is applicable everywhere, primary health care should include the following essential elements: education about common health problems and ways to prevent and control them; promotion of proper nutrition; an adequate supply of safe water; basic sanitation; maternal and child health, including family planning; treatment for common diseases and injuries; immunization against major infectious diseases; and prevention and control of locally endemic diseases.

Many of these elements have a direct bearing on maternal and child health. The reason is obvious: about two-thirds of most populations consist of women of childbearing age and children under the age of 15, and they constitute a particularly vulnerable group. This vulnerability stems from and is inherent in the rapid process of growth and development during pregnancy and early childhood. There are special biological and psychosocial needs that form part of this process and necessitate a continuity of care, especially when environmental conditions are adverse.

The health of all people is closely related to the level of their socio-economic development, but mothers and children suffer most severely from the consequences of poor socio-economic conditions. Thus, unless radical measures are taken now, the majority of today's children will have little chance to grow into the healthy adults required for tomorrow's development tasks, and the cycle of poverty and disease will continue unbroken.

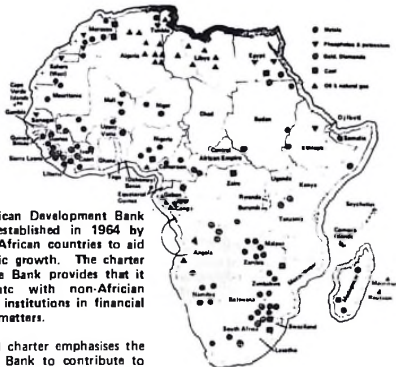
Maternal and child care must therefore be an indispensable priority element of primary health care in every community. It includes the promotive, preventive, curative and rehabilitative health care for mothers and children, and the sub-areas of maternal health, family planning, child health, school health, handicapped children, adolescence, and the health aspects of care of children in special settings such as day care.

WHO Feature

AFRICAN DEVELOPMENT BANK

Playing Vital Role In The Continent's Economic Growth

BY RAPH AKINJIOLA



Map of Africa showing important mineral resources. ADB is playing vital role in the continent's economic growth.

THE African Development Bank (ADB) was established in 1964 by independent African countries to aid their economic growth. The charter setting up the Bank provides that it may cooperate with non-African countries and institutions in financial and technical matters.

The ADB charter emphasises the need for the Bank to contribute to the economic advancement of its member states; and evidence can be seen in the various development projects it has supported.

Last year, the Bank financed 33 projects including three multi-national ones in 20 member states. These involved a total of N280 million. During the period, loans from Nigeria's Trust Fund placed at the disposal of Bank were used to finance 13 projects in different parts of the continent.

Alive to the realities of African situations, and trying to justify its role, the African Development Bank charges a very low interest rate on any loans given to member states.

More areas of further developments are being studied. The Bank pays particular attention to manpower development, including the improvement of the skills needed by various African countries.

The annual meeting of the Board of Directors, made up of Finance Ministers from member-states, is a popular forum through which the Bank endeavours to overhaul its operations. This year's conference in Abidjan, Ivory Coast which was the fourteenth since the ADB was established focused attention, among other issues, on new sources of revenue.

In this regard, a suggestion was made by the President of the Bank, Dr. Kwame Fordwor of Ghana, to open up the bank's capital stock to non-member States. This is to ensure that more development finance is raised through international capital institutions.

This suggestion was supported by Nigeria whose stand on the issue was made known at the Abidjan meeting by the Federal Commissioner for Finance, Major-General James Oluleye. The Commissioner said that this action was necessary because of Africa's position as a capital deficient continent. He also argued that the opening up of the capital stock of the bank of non-African participation would attract maximum flow of capital to its funds.

The major problem of the ADB is lack of adequate finance arising from the inability of some member-nations to make funds available. However, the Bank receives positive contributions from some of its members; and Nigeria is one of such active countries.

The colossal figure of N1000 million needed by the African Development Bank to execute its projects is staggering. Realising the limited financial capabilities of many African States, there is the need to tap new sources of revenue.

While, the ADB must beware of foreign influence dominating its activities, it should at the same time find realistic ways of generating funds to enable it to sustain and improve upon the level of its assistance to African States.

Closer Nigeria's Ties With The Soviets

-Another Effort At Projecting Non-Alignment Policy

By Amao Apampa

MAJOR-GENERAL Yar' Adua's visit to the Soviet Union represents yet another effort to project Nigeria's even-handed policy of non-alignment. Before going to the Soviet Union, the Chief of Staff had led a Federal Government delegation to North Korea and the People's Republic of China.

In the last three years, some Heads of State of East European countries like that of Poland and Romania have paid state visits to Nigeria. They were the first Communist leaders to come to this country since our independence. General Ousegun Obasanjo has since returned their visits.

Relations between Nigeria and the Socialist countries were minimal until 1967. Because of our colonial past, our ties were then more prominent with the Western nations. During our civil war, the Soviet Union supported this country in her efforts to preserve national unity. That gesture led to closer Nigerian ties with her and other Socialist States.

Historians are apt to recall three phases in Nigeria's relations with the Soviet Union. The first phase which began in 1960 and ended in 1963, was a period of little or no contact. The second phase, between 1963, was one of mere conformity with international good relations through the establishment of a Nigerian Embassy in Moscow in March 1963.

The third period from 1967 to date has witnessed growing co-operation between the two countries. We now live in more friendly terms, and the climate seems auspicious for the alignment of more permanent interests between the two nations.

Major-General Yar' Adua's discussions in Moscow appear to have featured economic issues prominently.



Major-General Shehu Yar'Adua, Chief of Staff, Supreme Headquarters, (third from right) with Soviet Prime Minister, Mr. A. N. Kosygin (fourth from right) during a recent four-day visit to the Soviet Union.

This is understandable in view of the fact that the Soviet Union is involved in the Ajaokuta Iron and Steel Complex project, a key factor in Nigeria's industrial take-off.

In the communique issued at the end of the Chief of Staff's visit to Moscow, it was declared that Nigeria and the Soviet Union reached understanding on all issues related to the steel plant in the context of the economic and technical co-operation between the two countries.

Nigeria's imports from the Eastern bloc, most of which came from the Soviet Union rose steadily from 1965 reaching about N20 million in 1968. Nigeria's exports to the Socialist States during the same period moved from N17 million to N24 million. Trade statistics for 1975 reflected Nigeria's volume of imports with Eastern Europe at well over N800 million.

Apart from advancing the cause of our Foreign Policy of Non-alignment, there are other reasons why Nigeria and the Soviet Union should forge cordial ties. As one of the most

technologically advanced nations and the world's second largest producer of pig iron and steel ingots, the Soviet Union could play a leading role in the transfer of technology for Nigeria's steel mills.

In particular, we can learn a lot from how the Soviets achieved success in the area of self-reliance and general development. Also, as a nation of some 200 million people, the Soviet Union opens up a great market for Nigeria's goods.

For her part, there is still need for the Soviet Union to increase the volume of her trade with Nigeria. But as the Federal Commissioner for Economic Development recently pointed out, the advanced nations should not regard the developing countries as dumping grounds for their manufactured goods.

In addition, they should now start to import not only raw materials from developing nations but also buy some manufactured goods from them. That way, they will encourage the non-advanced countries to develop at a faster rate, and make the world a better place to live in.

Africa, Britain & Zimbabwe

By Andy Anarado.

WITH the emergence of a Conservative Party Government in Britain, it is natural to speculate on the likely policy to be adopted by the new administration. This exercise becomes relevant for the people of Nigeria because of the impact of British policies on major sensitive international issues which would affect Africa.

From the manifesto presented to the British people by the Conservatives, it is very clear that the electorate voted to return the country to a traditional British policy trends. They would want Britain to stop serving as a haven for other nationals. In addition, they feel that Britain having lost the role of the master over the former colonial allies should stop showing favours or commitment which would not pay material dividends.

The irony is that Britain, and indeed some other former colonial powers, had found it difficult to accept the right of their former colonies to take independent decisions and formulate policies to suit their new status. What is, however, encouraging is that the era of master-servant relationship had gone, because the wind of change had been sweeping fast.



Bishop Abel Muzerewa, the puppet P.M.

In the case of Britain, it should be conceded that she reserves the right to pursue whatever policy she desires. But what concerns us is the degree of such policies as they affect African interests and that of developing countries the world over.



Africa showing Zimbabwe

Here, two major policy areas come immediately to mind. The first is the future of the immigrant population in Britain and the second, the Southern African problem with emphasis on Zimbabwe.

From the pronouncements of leaders of the Conservative Party in Britain, it is clear that the new Government will come up with something soon on immigration and the Zimbabwean situation.

This is not to say that the policies of former British governments on Zimbabwe had been impressive either. Rather, all the succeeding governments in that country had adopted an elusive attitude on the Zimbabwe issue. For the new Conservative Government of Mrs. Thatcher, the indications are already being given as to which way the waves will flow.

Mrs. Thatcher has already been making statements which to us are unfortunate. For instance, referring to Zimbabwe, she has remarked that there was an internal settlement, there was an election, one person one vote for four different parties. "Where else would you get that in Africa," she asked.

The new British Prime Minister also did observe that the non-recognition of Ian Smith regime was because it had not observed the six principles, which Britain in 1966 asked for before she could concede independence. The principles include majority rule, an end to racial discrimination and a form of government that was acceptable to all the people of Zimbabwe.

In the views expressed by Mrs. Thatcher, if the six principles are observed there is no reason to continue with sanctions against the regime.

From this, even if one is made to believe that there had been a stage-managed election in Zimbabwe, how do we reconcile the product of such election with the glaring realities of the situation?

A major fraudulent area that had exposed the unacceptability of a proposed so-called African government is the placing of key Ministries of Defence, Finance, External Affairs and Justice in the hands of white settlers who constitute a negligible minority in Zimbabwe.



Joshua Nkomo of the Patriotic Front.

These are some of the factors that should influence the decision of any government that talks of possible recognition of the state-managed election in Salisbury. Happily, all the previous designs and manoeuvres of the White minority group in that territory had ended at nothing.

One point that should be emphasised is that whichever way the new Conservative Government decides to go on Zimbabwe, the fact still remains that Britain is just one country within the world community. If therefore the British Government of Mrs. Thatcher decides to stake the future of the Commonwealth and that of Britain's relations with African States over Zimbabwe, she should be prepared to receive what she asks for.

OFN - now three years old

By Ben Egbuna



General Obasanjo and other top-ranking army officers during the launching of OFN three years ago.

WHEN on the May 21, 1976, the Federal Military Government launched the Operation Feed the Nation Programme (OFN) it was generally acclaimed a laudable attempt to make Nigeria self-reliant in food production.

There had been a nation-wide concern about our agriculture, particularly in the area of food crops production, which had not only failed to keep pace with population growth, but had continued to decline over the years through total neglect by the majority of the people.

In the implementation of the OFN programme, attention has been drawn to those aspects of agricultural development which can be manipulated for the quickest returns. This is obviously why strong emphasis has been placed on fertilizers. In the three years of OFN, well over 990,000 tonnes of fertilizers have been imported by Government and sold to farmers at highly subsidised rates.

Another input that has received attention is improved seeds. Last year, nearly 7,000 tonnes of improved seeds were produced and the nation

now has some units at both Federal and State levels to facilitate their multiplication. One important development from OFN has been the arrangements for the establishment of agro-service centres.

In addition, the farmer has a reliable source of financing food production by way of the N100 million Credit Guarantee Scheme introduced by Government. Commercial banks are bound by law to ensure that at least nine per cent of their individual total advances goes to agriculture.

The promotion of agriculture through the OFN contributed to a 3% increase in the country's food production in 1976, 10% in 1977 and twice as much in 1978. Even if these increases have not resulted in corresponding reduction in food prices, they indicate a definite reversal of the pre-OFN food production pattern in the country.

This is not to say that OFN has not had its shortcomings. For instance, there is much to be done to introduce a system of more than one harvest a year on a large scale in the

country. Another area which needs closer attention is the training of new agricultural extension workers and agricultural journalists. These two classes of workers are vital to the dissemination of new agricultural methods to the farming community in the farms they can be consumed and used.

Besides, the need for devising ways of preserving and storing food has been identified for its importance. This is because during the peak period of the harvest, inadequate preservation facilities and techniques lead to wastage of the surplus. So far, the sum of N36.2 million has been spent on the OFN programme.

In assessing the OFN programme, it is important to bear in mind the fact that it was meant to provide a foundation for agricultural revitalisation. Viewed from this perspective, there is no doubt that one area in which OFN has created an awareness at all levels has been the involvement of people from different walks of life in efforts at stimulating food production.

BASSEY BLACK

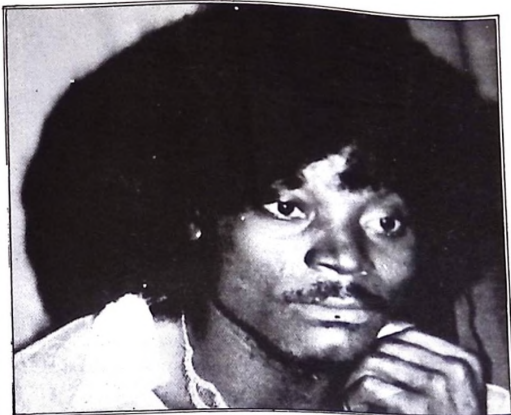
— Leader Of Natty Messiah

FROM a distance, Bassey Black, leader of the Natty Messiah — one of Nigeria's newest mid-period bands — can easily be mistaken for a hippy, a kind of mind-stunning monolith. But he is of a different breed, a true Nigerian from the Cross River State.

Born in Oron on 25th March, 1953, Bassey started quits early to have his eye on music. At the tender age of 10, he had recognised his special flair for the music of such great pop stars as the Beatles, the Seekers, the Beach Boys, Otis Redding and Wilson Pickett.

Bassey did n't have any secondary education until after the civil war, when he got a place in the Nigerian Christian Secondary School, Ukpom in Abak Division of Cross River State. He was further fortunate to find the opportunity whilst in college to develop his artistic potential, especially in the area of music, through active participation in various musical, cultural and dramatic activities. He bought his first box guitar in his second year and succeeded in writing his first musical play in the fourth year — a play which later became the favourite of cultural nights in the college for some consecutive years.

On leaving school, Bassey went straight into professional music. Within five years he graphed through three different bands (the Ayino Superstars, the Doves and the Rock Town Express). In 1977, following his unsuccessful attempts to record his first album, he almost called it quits to music, and took up a job with the Metallum Ltd., a Swiss firm based in Lagos. The following year, he set about working for the elpee "Peace through Understanding", which eventually stormed the Nigerian record market.



Bassey Black.

This album claims to contain a musical diversity seldom found in this age of groups which enjoy latching on to a particular style all the time and even flogging it to a point of almost running it aground. This diversity comes, I think, partially from the many varied musical instruments each member of the group is able to play; more so, the dexterity in playing them.

The unique thing about this group, however, is their ability to interlace their peculiar sound with sensitive jazz influences, without departing from the main mood of the album, which is that of a far-cry for peace, unity and ready compromise, among the peoples of the world, no matter the class, crib or colour. Three tracks in this album: "Hypocrite", "Ne Nkpo Su Owi" (Oron) and "Peace through Understanding" (title track), seem to

manifest this point clearly.

The other peculiarity of the group's music can be felt in its usually unsteady form. Sometimes, it would appear to sound pop-like; other times, it appears to stagger out like a sick worm but helped out by strong oft-echoing vocals, moody emphasis and intricate but heavy drum work. Furthermore, it would appear to borrow a touch of Ozzidism or so. This could be observed from its structuring — a track like 'Ne Nkpo Su Owi' (Oron) on the flip side.

However, Bassey is a budding musical genius and this album has had a smashing take-off, paving its way for a possible silver. It is to be hoped, that this is just the beginning of more outstanding works to come from the Natty Messiah workshop.

By Phil Maha

Nigeria's Natural Rulers

- Citadel Of Trust And Understanding

The role of our natural rulers to assist the Federal and the State Governments in the maintenance of law, order and peace in the country cannot be over-emphasised. In a broadcast over Radio Plateau, a Commentator on Current Affairs, Mr. Sunday Akintobi attempted to throw more light on the important functions of these natural rulers.

DURING the weekend, on Saturday 28th April, 1979 to be precise, the official presentation of the second class staff of office was made to the Ponzih Taroh, the Chief of Yergam, Mr. Edward Zhattau in Langtang by the Military Administrator, Col. Joshua Anaja.

Speaking at the ceremony, Col. Anaja called on the new chief to continue to direct the activities of his Domain until justice is finally established within the borders of his chiefdom. He appealed to other natural rulers to encourage their people to undertake community development and promote unity.

Also speaking at the same ceremony, the Chairman of the Langtang Local Government Council, Mr. William Joro, described traditional rulers as disseminators of Government policies to the common people. He said that they were the most consistent factors during the era of different Governments of our country through ages.

Just like the civil servants, the role of the natural rulers cannot be underestimated, as they provide continuity, keeping the mechanism of Government intact to avoid the break-down of law and order. They are the honoured fathers of their subjects ready at an instant to help and solve their teething problems of life; being the citadels of trust and understanding.



Mr. Sunday Akintobi.

They are the impartial Judges in the affairs of their subjects and must be seen to be neutral and be above any reproach from their subjects through their dedication and tact in handling delicate belligerent matters. Their useful link must not be tainted at all times by upholding liberty and justice; since their words should be very weighty and their activities dignifying with wisdom in the eyes of their loyal subjects.

The Federal Military Government learnt a lot from the mistakes of the first Republic before setting up the Local Government reform system in the country.

The Local Government Reform has introduced for the first time in the history of the country, a uniform but flexible system of Government that caters for our diversities in unity. It was also introduced to satisfy local wishes and initiatives; to provide suitable Government to the local levels of the society, to mobilise human and material resources for their local development and promote a two-way channel of communication.

To crown these laudable functions, was the establishment of traditional Emirate councils making some traditional rulers ceremonial presidents. Their role was clearly spelt out to avoid misrepresentation of facts by ambitious subjects trying to satisfy their ego.

These are to assist the Government in the maintenance of peace, tour only part of their emirate or chiefdom, and make observations on any aspect of developments as they deem it fit to the State Government

Therefore, the role of our natural rulers is tremendous in our country. They are the unifying source of purity, love and unity among their subjects; and not the base for rancour, disunity and bitterness within their domains; in order to enhance our traditional rich heritage and enviable custom. They should be seen to be neutral at all times in order to generate oneness, love and institutional growth.



Map of Nigeria showing Plateau State

As loyal subjects, we should not drag their exalted names into the mud. For, they are truly the safety valve for our hope, fairplay and economic emancipation in the country through the promotion and fulfilment of Development projects.

Indeed, our natural rulers are the glorified citadels of trust and understanding and should so remain in order to be cherished and caressed by all their subjects.

SPORTS

4th National Sports Festival

What Are Nigeria's Chances?

BY OLA BEYIOKU

AS the 4th National Sports Festival draws near with the competitions starting on August 20 and ending on September 10, this year, at Ibadan, capital of Oyo State, it is only fair to ask ourselves as to what efforts we are making to make sports festival a success?

An average Nigerian athlete takes part in sports today only to win, possibly at all costs, not to participate for the glory of sports as a competitive exercise.

Sports as competitive games had been rooted in the past, amongst the Greeks and other nations of the ancient world. Unlike the unwholesome rivalry such as wars which characterised the relationship between nations like Egyptians, the Chaldeans, the Babylonians and the Persians, sports have always been one of healthy rivalry. Hence all nations now attach great importance to sports as a peaceful means of co-existence.



A tense moment at one of recent Volley ball encounters. Nigeria is one of the best in Africa in the game

Judging from the slow, steady but perhaps, sure manner Nigeria is now rising in the world of sports, it could be said that she is already winning respect in badminton, basketball, boxing, table tennis, lawn tennis and athletics.

Nigeria men's relay team of T. Oyebami, Rex Bazunmu, Benedict Maje-kodunmi and Kolawole Abdula, alias "Collinton", established unquestionable supremacy at the 2nd All-Africa Games held in Lagos in 1973 when they silenced critics to win the 4 x 400 metres race with a new All-African time of 39.84 sec. to set aside Senegalese record of 40.5 sec. set in Congo Brazaville in 1965.

One can still remember that in boxing at the same 2nd All-African Games held in Lagos, the trio of Fatai Ayinla Adekunle (alias "Fati Row"), Obisia Nwakpa and Isaac Ikhuaoria creditably won gold medals for Nigeria.

Today, these fine sportsmen are no more active boxers. They have turned

coaches with the Oyo and Bendel States' Sports Councils respectively, while Obisia Nwakpa has become a professional boxer aspiring to become champion.

A remarkable achievement has been made by Nigeria, however, in the world of amateur boxing. Young David Andeh is the first Nigerian Amateur boxer to wear a world crown in the lightweight division. But it is learnt that Andeh is planning to quit amateur boxing.

Our hopes are however high in table tennis which gave Nigeria eight gold medals at the same 2nd All-Africa Games. Mention could be made of players like Yisau Aiyesoro, Ethel Jacks, Dupe Beyioku, Lassie Wilson, Lateef Sunmola, O. Orukotan, Kasali Lasisi, Lekan Feniwi, Babatunde Obisanya, and Muyiwa Oni. They battled Egyptians, Senegales, Dahomeans, Togolese, Ghanaians, to win laurels for Nigeria.

In the field of lawn tennis, were names like Thompson Onibokun and Lawrence Awopegba now both lawn tennis coaches with the Oyo and Lagos States Sports Councils respectively who made appreciable impact on the world grade of lawn tennis. It is in only David Imonite that our hope of snatching any gold could be pinned at the games. And of course should not forget Segun Balogun of Ondo State, who looks young and promising in Ogun State. "Champion" Olujobi Banjo is still up-and-coming, depending much on how he makes use of the golden opportunity before him.

Let us pray that our athletes will do us proud at the Sports Festival.



Slugging it out toe-to-toe are these two budding boxers. Behind them is the National Referee, Funsho Dada.

FRCN: LAGOS

PROGRAMME SCHEDULE

MF
Short-Wave
FM

1088 KHz - 276 metres
4.980MHz - 60 metre band
92.936MHz

0530 - 0005 hrs
0530 - 0005 hrs
0530 - 0005 hrs

SUNDAYS		16.45	OUR MUSIC (Rpt. Wed. 13.45)	05.40	FAMILY PRAYERS
06.30	DRUM SIGNAL	17.00	NEWS ON THE HOUR	05.50	READING FROM THE HOLY QUARN
06.33	STATION ANNOUNCEMENT	17.03	F. R. C. N. FORUM/PEOPLE'S FORUM/SYMPOSIUM/PLEASE EXPLAIN (Rpt. Mon. 17.15)	06.00	NEWS AT DAWN
06.33.30	NATIONAL ANTHEM			06.03	FROM THE NIGERIAN EDITORIALS (Rpt.13.10)
06.34	NATIONAL PLEDGE			06.08	MOMENT FOR THOUGHT (Rpt. 06.55 & 21.03)
06.34.30	FREQUENCY ANNOUNCEMENT	18.00	NEWS ON THE HOUR		SOUNDS UNLIMITED
06.35	PROGRAMME SUMMARY	18.03	FOLK TUNES ON THE PIANO (Rpt. Fri. 21.06)	06.55	MOMENT FOR THOUGHT
06.40	FAMILY PRAYERS			07.00	NETWORK NEWS
06.50	READING FROM THE HOLY QURAN	18.15	INTERNATIONAL YEAR OF THE CHILD (Rpt. Mon. 14.45)	07.10	SPOTLIGHT (Rpt.18.03)
08.00	NEWS AT DAWN	18.30	THE WORLD OF SPORTS	07.15	SOUNDS UNLIMITED (Cont'd)
08.03	MOMENT FOR THOUGHT (Rpt. 06.55 & 21.03)	19.00	THE NEWS	08.00	NEWS ON THE HOUR
08.06	MUSIC TO REMEMBER	19.10	NEWS ANALYSIS	08.03	CULTURAL MUSIC
08.55	MOMENT FOR THOUGHT (Rpt. 21.03)	19.15	WHAT THE PEOPLE SAY (From: Sat. 21.10)	08.15	CONGO TO CARRIBEAN (Rpt. Wed. 09.15)
07.00	NETWORK NEWS	19.30	ISLAMIC MODE OF WORSHIP	08.45	EDUCATIONAL SERVICE
07.10	NEWS ANALYSIS (From: Sat. 22.10)	19.45	OUR MUSICAL INSTRUMENTS (Rpt. Tues.09.45)	09.00	NEWS ON THE HOUR
07.15	WEEK AHEAD	20.00	NEWS ON THE HOUR	09.03	MIXED GRILL (CGR) (Compilation)
07.30	MUSIC FROM THE ORIGIN	20.03	SHORT STORY//IN A LIGHTER MOOD (Rpt. Tues 13.45)	10.00	THE NEWS
08.00	NEWS ON THE HOUR			10.10	PROGRAMME PROMO (FRCN Forum/Brains Trust)
08.03	LET'S WORSHIP	20.20	SUNDAY NIGHT SERVICE*	10.15	EDUCATIONAL SERVICE
08.00	NEWS ON THE HOUR			11.00	NEWS ON THE HOUR
08.03	STOCK MARKET REPORT (From Sat; 14.03)	21.00	NEWS ON THE HOUR	11.03	EDUCATIONAL SERVICE
08.10	LIGHT MUSIC/PUBLIC SERVICE ANNOUNCEMENTS	21.03	MOMENT FOR THOUGH HT (From:06.55)	12.00	NEWS ON THE HOUR
08.15	MAGAZINE A - Z	21.06	MAKING THE MAN (Rpt. Tues. 19.45)	12.03	EDUCATIONAL SERVICE
09.45	FROM THE LEGAL STAND POINT (Rpt; Fri. 19.45)	21.21	PIANO MUSIC(Disc)	12.30	MID-DAY RHYTHMS
10.00	THE NEWS	21.30	COMMUNITY HYMN SINGING*	13.00	THE NEWS
10.10	A DISC FOR YOU	22.00	NETWORK NEWS- WEATHER NEWS/A DISC FOR YOU	13.10	FROM THE NIGERIAN EDITORIALS(From.; 06.03)
10.15	GANDU STREET & (1st Quarter) (Rpt: (1) Wed.09.45 (II) Tues:16.45 SHAMBA'S FAMILY & (2nd Quarter) (Rpt:Tues. 16.45)	22.10	WEATHER NEWS/A DISC FOR YOU	13.15	THE IN-CROWD (From:Sat: 11.30)
10.30	HOSPITAL REQUEST	22.15	HEALTH IS WEALTH (Rpt: Mon.19.45)	13.45	MR. & MRS. N. J. (Rpt: Thurs 13.45)
11.00	NEWS ON THE HOUR	22.30	UNDER THE MOON LIGHT(Rpt. Wed. 22.45)	14.00	NEWS ON THE HOUR
11.03	F. R. C. N. MAIL BAG (From Sat; 20.03)	22.45	NUR A LA NUR (Rpt. Mon.21.45)	14.03	HOME MAKERS SPECIAL (Rpt; Wed; 14.03)
11.30	JOIN THE BAND WAGON (Rpt: Thurs. 22.30)	23.00	NEWS ON THE HOUR	14.45	INTERNATIONAL YEAR OF THE CHILD (From:Sun. 18.15)
12.00	NEWS ON THE HOUR	23.03	SUNDAY SERENADE	15.00	NEWS ON THE HOUR
12.03	FAMILY FAVOURITES	23.50	EPILOGUE	15.03	KALEIDOSCOPE
13.00	THE NEWS	00.00	NEWS AT MID-NIGHT	16.00	NETWORK NEWS
13.03	LUCKY DIP	00.05	CLOSE DOWN	16.10	EDUCATIONAL SERVICE
13.15	THE DECADE AHEAD (Rpt: wed.18.45)	00.05.30	NATIONAL PLEDGE AND ANTHEM.	16.25	KALEIDOSCOPE (Cont'd)
13.30	GUIDE TO NIGERIAN MUSIC			17.00	NEWS ON THE HOUR
14.00	ACROSS THE NATION			17.03	F. R. C. N FORUM/SYMPOSIUM/PLEASE EXPLAIN/ PEOPLE'S FORUM (From: Sun: 17.03)
15.00	NEWS ON THE HOURS			18.00	NEWS ON THE HOUR
15.03	BEHIND THE HEADLINES			18.03	SPOTLIGHT(From:07.10)
15.30	PLAY OF THE WEEK (Rpt. Tues. 21.30)			18.08	LET'S GO FARMING
16.00	NETWORK NEWS			18.13	ANNOUNCERS' CHOICE
16.10	A DISC FOR YOU			18.30	SCHOOLS DEBATE (Rpt. Wed; 19.30)
16.15	SCHOOLS CHALLENGE (Rpt. Tues; 13.15)			19.00	NEWS PANORAMA

FRCN: LAGOS

PROGRAMME SCHEDULE

MF 1088 KHz - 276 metres
 Short-Wave 4.990MHz - 60 metre band
 FM 92.936MHz

0530 - 0005 hrs
 0530 - 0005 hrs
 0530 - 0005 hrs

11.03	EDUCATIONAL SERVICE	32.00	NEWS ON THE HOUR	15.03	KALEIDOSCOPE
12.00	NEWS ON THE HOUR	23.03	READ WITH ME	16.00	NETWORK NEWS
12.03	EDUCATIONAL SERVICE	23.10	MID-WEEK CONCERT	16.10	EDUCATIONAL SERVICE
12.30	MID-DAY RHYTHMS	00.00	NEWS AT MID-NIGHT	16.25	FOR CHILDREN (From. Tues. 16.25)
13.00	THE NEWS	00.05	DAY IS DONE	16.40	KALEIDOSCOPE (Cont'd)
13.10	FROM THE NIGERIAN	00.09	CLOSE DOWN	17.00	NEWS ON THE HOUR
	EDITORIALS (From. 06.03)	00.09.30	NATIONAL PLEDGE AND ANTHEM.	17.03	KALEIDOSCOPE (Cont'd) (Social Music)
13.15	MAGAZINE A TO Z (From. 09.15)			17.45	A CLOSER LOOK" ((Festive)) (Rpt. Sat. 16.15)
13.45	OUR MUSIC (From Sun. 16.45)		THURSDAYS:	18.00	NEWS ON THE HOUR
14.00	NEWS ON THE HOUR	05.30	DRUM SIGNAL	18.08	LET'S GO FARMING
14.03	HOME MAKERS SPECIAL (From. Mon. 14.03)	05.33.30	STATION ANNOUNCEMENT	18.13	VOICES (Rpt. Sat. 19.30)
		05.34	NATIONAL ANTHEM	18.20	LEGACY (From; Tues. 22.30)
14.45	KIDDIES GET TOGETHER (Rpt. Sat. 10.45)	05.34.30	NATIONAL PLEDGE	19.00	NEWS PANORAMA
			FREQUENCY ANNOUNCEMENT	19.30	GOSPEL SONGS
15.00	NEWS ON THE HOUR	05.35	PROGRAMME SUMMARY	20.00	NEWS ON THE HOUR
15.03	KALEIDOSCOPE	05.40	FAMILY PRAYERS	20.03	TOMORROW ON F. R. C. N
16.00	NETWORK NEWS	05.50	READING FROM THE HOLY QURAN		PUBLIC SERVICE ANNOUNCEMENTS
16.10	EDUCATIONAL SERVICE		NEWS AT DAWN	20.15	EDUCATIONAL SERVICE
16.25	A DISC FOR YOU	06.00	FROM THE NIGERIAN	20.30	TOWARDS CIVIL RULE
16.30	MEETING POINT (Rpt: Fri. 18.30)		EDITORIALS (Rpt 13. 10)	20.45	MY KIND OF MUSIC
17.00	NEWS ON THE HOUR	06.03	MOMENT FOR THOUGHT (Rpt.06.55) & 21.03)	21.00	NEWS ON THE HOUR
17.03	TRUE TO LIFE (Rpt: Thurs. 08.30)	06.10	SWING WITH MARIUS 'U'	21.03	MOMENT FOR THOUGHT (From. 06.55)
17.18	RECORDS FROM OUR RACKS	06.55	MOMENT FOR THOUGHT (Rpt. 21.03)	21.06	FOR MUSLIMS
17.30	FEMININE WORLD (Rpt. Thurs. 21.30)	07.00	NETWORK NEWS	21.18	EVENING WORSHIP
		07.10	NEWS ANALYSIS (From: Wed. 22.10)	21.30	FEMININE WORLD (From: Wed. 17.30)
18.00	NEWS ON THE HOUR		SPOTLIGHT (Rpt 18.03)	22.00	NETWORK NEWS
18.03	SPOTLIGHT (From 07.15)	07.15	SWING WITH MARIUS 'U' (Cont'd)	22.15	EDUCATIONAL SERVICE
18.08	LET'S GO FARMING	07.20	NEWS ON THE HOUR	22.30	JOIN THE BAND-WAGON (from. Sun. 11.30)
18.15	FOLK MUSIC (Rpt: Fri. 19.30)	08.00	CULTURAL MUSIC	23.00	NEWS ON THE HOUR
18.30	WINDOW ON THE WORLD (Rpt: Wed. 22.30)	08.03	THE MINSTREL (From; Tues 10.30)	23.10	MYTHS AND LEGENDS (From. Mon. 19.30)
18.45	THE DECADE AHEAD (From; Sun. 13.15)	08.15	TRUE TO LIFE (From. Wed. 17.03)	23.25	SOFT, LIGHT AND SWEET MUSIC
19.00	NEWS PANORAMA	08.30	EDUCATIONAL SERVICE	00.00	NEWS AT MID-NIGHT
19.20	SCHOOL'S DEBATE (From. Mon. 18.30)	08.45	NEWS ON THE HOUR	00.05	DAY IS DONE
20.00	NEWS ON THE HOUR	09.00	POPULAR SOUNDS	00.09	CLOSE DOWN
20.03	TOMORROW ON F. R. C. N. PUBLIC SERVICE ANNOUNCEMENTS	09.03	THE NEWS	00.09.30	NATIONAL PLEDGE AND ANTHEM'
		10.10	PROGRAMME PROMO (Feminine World/For Children		
20.15	EDUCATIONAL SERVICE	10.15	EDUCATIONAL SERVICE		
20.30	TOWARDS CIVIL RULE	11.00	NEWS ON THE HOUR		
20.45	ANNOUNCER'S CHOICE	11.03	EDUCATIONAL SERVICE		
21.00	NEWS ON THE HOUR	12.00	NEWS ON THE HOUR		
21.03	MOMENT FOR THOUGHT (From. 06.55)	12.03	EDUCATIONAL SERVICE	FRIDAYS:	
		12.30	MID-DAY RHYTHMS	05.30	DRUM SIGNAL
21.06	FOR MUSLIMS	13.00	THE NEWS	05.33	STATION ANNOUNCEMENT
21.18	EVENING WORSHIP	13.03	FROM THE NIGERIAN	05.33.30	NATIONAL ANTHEM
21.30	FEATURES (Rpt. Fri. 17.30)		EDITORIALS (From. 06.03)	05.34	NATIONAL PLEDGE
22.00	NETWORK NEWS	13.15	JUKE BOX	05.34.30	FREQUENCY ANNOUNCEMENT
	07.10) WEATHER NEWS	13.45	MR. & MRS. N. J. (From. Mon. 13.45)	05.35	PROGRAMME SUMMARY
22.15	EDUCATIONAL SERVICE		NEWS ON THE HOUR	05.40	FAMILY PRAYERS
22.30	WINDOW ON THE WORLD (From; Wed; 18.30)	14.00	HOME MAKERS SPECIAL (From. Tues. 14.03)	05.50	READING FROM THE HOLY QURAN
22.45	UNDER THE MOONLIGHT (From; Sun; 22.30)	15.00	NEWS ON THE HOUR	06.00	NEWS AT DAWN

FRCN:LAGOS

PROGRAMME SCHEDULE

MF
Short-Wave
FM

1088 KHz 270 metres
4.990MHz - 60 metre band
92.936MHz

0630 0005 hrs
0530 0005 hrs
0530 0005 hrs

06.03	FROM THE NIGERIAN EDITORIALS (Rpt. 14.03)		SERVICE ANNOUNCEMENTS	10.45	KIDDIES GET TOGETHER (From; Wed; 14.45)
06.08	MOMENT FOR THOUGHT (Rpt. 06.55 & 21.03)	20.15	EDUCATIONAL SERVICE	11.00	NEWS ON THE HOUR
06.10	FRIDAY WITH	20.30	TOWARDS CIVIL RULE	11.03	MUSIC FROM OTHER LANDS
06.55	MOMENT FOR THOUGHT (Rpt. 21.03)	20.45	A DISC FOR YOU	11.30	THE IN-CROWD (Rpt. Mon 13.15)
07.00	NETWORK NEWS	20.50	EVENING WORSHIP		
07.10	NEWS ANALYSIS (From. Thurs. 22.10)	21.00	NEWS ON THE HOUR	12.00	NEWS ON THE HOUR
07.15	SPOTLIGHT (Rpt. 18.03)	21.03	MOMENT FOR THOUGHT	12.03	THE BIG BEAT
07.20	FRIDAY WITH	21.06	A DISC FOR YOU	13.00	THE NEWS
08.00	NEWS ON THE HOUR	21.12	THE CHURCH TO-DAY	13.03	FROM THE NIGERIAN
08.03	CULTURAL MUSIC	21.30	EDUCATIONAL SERVICE		EDITORIALS (From. 08.03)
08.15	MUSICAL PROFILE (Rpt. Sat. 15.30)	21.45	SPECIAL READING FROM THE HOLY QURAN	13.15	BREAK FROM BOOKS (Request Programme for Students)
08.45	EDUCATIONAL SERVICE	22.00	NETWORK NEWS		
09.00	NEWS ON THE HOUR	22.10	NEWS ANALYSIS (Rpt. Sat 07.10)	14.00	NEWS ON THE HOUR
09.03	AFRO STARS	22.30	WEATHER NEWS	14.03	STOCK MARKET REPORT (Rpt. Sun. 08.03)
10.00	THE NEWS	23.00	EDUCATIONAL SERVICE	14.10	BREAK FROM BOOKS
10.10	PROGRAMME PROMO (Sports)	23.03	NEWS ON THE HOUR	14.30	AFRICA THIS WEEK (Rpt. 19.15)
10.15	EDUCATIONAL SERVICE	23.10	READ WITH ME		
10.30	LEGACY	23.20	STRINGS KHUTBA	14.45	SPIRITUALS (From. Tues. 08.15)
10.45	EDUCATIONAL SERVICE	23.50	AL-AISH		
11.00	NEWS ON THE HOUR	00.00	NEWS AT MID-NIGHT	15.00	NEWS ON THE HOUR
11.03	EDUCATIONAL SERVICE	00.05	CLOSE DOWN	15.03	SATURDAY JUMP
12.00	NEWS ON THE HOUR	00.05.30	NATIONAL PLEDGE	15.30	MUSICAL PROFILE (From. Fri. 08.15)
12.03	EDUCATIONAL SERVICE		ANTHEM	16.00	NETWORK NEWS
12.30	PRELUDE TO JUMAT SERVICE			16.10	A DISC - FOR YOU
13.00	THE NEWS	05.30	DRUM SIGNAL	16.15	A CLOSER LOOK
13.13	JUMAT SERVICE (O. B.)	05.33	STATION ANNOUNCEMENT	16.30	SPORTS PAVILION
13.45	ANNOUNCER'S CHOICE	05.33.30	NATIONAL ANTHEM	18.30	TIME FOR HIGHLIFE
14.00	NEWS ON THE HOUR	05.341	NATIONAL PLEDGE	19.00	THE NEWS
14.03	FROM THE NIGERIAN EDITORIALS	05.34.30	FREQUENCY ANNOUNCEMENT	19.10	NEWS ANALYSIS (From. Fri. 22.10)
14.08	FOR SHOPPERS (Rpt. Sat. 09.03)		PROGRAMME SUMMARY	19.15	AFRICA THIS WEEK
15.00	NEWS ON THE HOUR	05.35	FAMILY PRAYERS	19.30	VOICES (From Thurs. 18.15)
15.03	KALEIDOSCOPE	05.40	READING FROM THE HOLY QURAN	19.45	GANDU STREET
18.00	NETWORK NEWS	05.50	NEWS AT DAWN	20.00	NEWS ON THE HOUR
18.10	KALEIDOSCOPE (Cont'd)	06.00	FROM THE NIGERIAN EDITORIALS (Rpt. 13.10)	20.03	F. R. C. N. MAIL BAG
17.00	NEWS ON THE HOUR	06.03	MOMENT FOR THOUGHT (Rpt. 06.55 & 21.03)	20.30	TOWARDS CIVIL RULE
17.03	JUST A MINUTE (From; Tues. 17.03)	06.08	COUNTRY-SIDE SPECIAL	20.30	TRANSITION
17.30	FEATURE (From. Wed. 21.30)	06.55	MOMENT FOR THOUGHT (Rpt. 21.03)	21.00	NEWS ON THE HOUR
18.00	NEWS ON THE HOUR	07.00	NETWORK NEWS	21.03	MOMENT FOR THOUGHT (From. 08.55)
18.03	SPOTLIGHT (From. 07.15)	07.10	NEWS ANALYSIS (From. Fri. 22.10)		A DISC FOR YOU
18.08	LET'S GO FARMING	07.15	LET'S GO FARMING	21.06	WHAT THE PEOPLE SAY (Rpt. Sun 19.10)
18.15	MUSIC OF OUR AGE	07.20	COUNTRY-SIDE SPECIAL	21.10	FOR MUSLIMS
18.30	MEETING POINT (From. 08.03)	08.00	NEWS ON THE HOUR	21.25	SOUL LIFT
18.00	NEWS PANORAMA	08.03	CULTURAL MUSIC	21.40	NETWORK NEWS
19.30	SPORTS PREVIEW (From; Wed. 18.15)	08.15	JAMBOREE	22.00	NEWS ANALYSIS (Rpt Sun. 07.10)
19.45	FROM THE LEGAL STAND POINT (From. Sun. 09.45)	09.00	NEWS ON THE HOUR	22.10	WEATHER NEWS
20.00	NEWS ON THE HOUR	09.03	FOR SHOPPERS (From. Fri 14.08)	22.15	EVENING WORSHIP
20.03	TOMORROW ON F. R. C. N /LIGHT MUSIC/PUBLIC	10.00	THE NEWS	22.30	MUSICAL SHADES (From. Mon. 22.30)
		10.10	PROGRAMME PROMO (Sports)	23.00	NEWS ON THE HOUR
		10.15	MUSIC IN PERSPECTIVE (From. Tues. 12.30)	23.03	CLUB HOUSE SPECIAL
				00.00	NEWS AT MID-NIGHT
				00.05	DAY IS DONE
				00.09	CLOSE DOWN
				00.09.30	NATIONAL PLEDGE AND ANTHEM'

FRC-2 PROGRAMME SCHEDULE

MF - 1458KHz - 206 metres

FM - Stereo 97.66MHz

0600 - 1205 hrs

1530 - 0000 hrs

0600 - 0000 hrs

SUNDAYS:

0553	XYLOPHONE CALL SIGNAL
0555	OPENING FORMALITIES
0600	SUNDAY MORNING MELODIES - Sounds at dawn on Sunday
0630	NEWS BEAT
0635	SUNDAY MORNING MELODIES - (Continues)
0730	NEWS BEAT
0735	SUNDAY MORNING MELODIES - (Finale)
0800	JUST A CHAT - Chit Chat with an interesting person, his music, his friends, books, hobbies with reminiscences on his childhood.
0830	NEWS BEAT
0835	WISHING YOU WELL -
0930	NEWS BEAT
0935	WISHING YOU WELL - (Finale)
1000	RHYTHM A-GO-GO - Mixed bag of heavy instrumental music
1015	SOUNDS ON SUNDAY - Mixed bag of instrumental and other hits for Sunday listening
1030	NEWS BEAT
1035	THINKING ALOUD - From Saturday 1300
1050	HIGHLIFE MUSIC
1100	NEW ON THE SCENE (New names or New Discs on the Nigerian Music Scene)
1200	WORLD AT NOON
1210	SUNDAY BRUNCH - Jumpy Musical Session
1300	SUNDAY BRUNCH - (Continues)
1400	CITIZEN MUDA - Scenes from the diary of a city man
1430	NEWS BEAT
1435	SUNDAY STEREO FIESTA (FAMILY FAVOURITES) - Listeners' letters, requests etc.
1530	NEWS BEAT
1535	SUNDAY STEREO FIESTA - Listeners Choice (Continues)
1630	NEWS BEAT
1635	SCHOOL'S CHALLENGE
1705	MUSIC FOR YOU
1800	WORLD AT SIX
1810	SHOWTIME - FRC-2 Variety Show
1835	MELODY LANE
1930	NEWS BEAT
1935	MELODY LANE (Continues)
2030	NEWS BEAT
2035	RHYTHM RENDEZVOUS - Mixed bag of catchy hits from all around
2130	NEWS BEAT
2135	RHYTHM RENDEZVOUS - (Continues)
2230	NEWS BEAT
2235	MEDITATION - Reflections on some aspects of life and living
2245	INTERLUDE - Light Music with Gramophone Records
2300	FRC - CONCERT TIME - A date with the classics
2335	FRC II - CONCERT TIME - Finale
2400	CLOSE DOWN

MONDAY

0553	XYLOPHONE CALL SIGNALS
0555	OPENING FORMALITIES
0600	HAPPY DAY - Lively beauty Sounds to start off the day.
0630	NEWS BEAT

0635	HAPPY DAY - (Continues)
0730	NEWS BEAT
0735	HAPPY DAY - (Finale)
0800	FOR YOU AT HOME - Medley of bright music Discs selected should reflect a cooling off zone after the busy Session on Happy Day
0830	NEWS BEAT
0800	WOMAN TO WOMAN - Chit Chat, house hold hints & tips for the Lady at Home
0930	NEWS BEAT
0935	WOMAN TO WOMAN - (Continues)
1000	SOUNDS TROPICANA - Lively Sounds from the black and African World
1030	NEWS BEAT
1035	SOUNDS TROPICANA - (Continues)
1100	WHAT THE PAPERS SAY
1105	REGGAE TIME - A spotlight on Top Reggae
1200	THE WORLD AT NOON
1210	TAKE ONE
1215	THAT'S LIFE (from Thursday 18 15)
1300	NEWS BEAT
1335	BUKA CONNECTION - Indigenous Social Music
1430	NEWS BEAT
1435	BUKA CONNECTION - Part II
1530	NEWS BEAT
1535	HOMeward BOUND - (Disco trip for people on the move)
1630	NEWS BEAT
1635	HOMeward BOUND
1700	HIGH LIFE TIME - A Session of high life music old and new
1730	NEWS BEAT
1735	HIGH LIFE TIME - (Continues)
1800	THE WORLD AT SIX
1810	SPOT THE TUNE - A musical quiz show in which snippets of records are played for identification by listeners
1815	LONG THROAT JUNCTION (DRAMA SERIES) Dramatic happenings in a local food centre
1835	TEEN & TWENTY BEAT - Music for the new generation
1930	NEWS BEAT
1935	TEEN & TWENTY BEAT - (Continues)
2030	NEWS BEAT
2035	RHYTHM RENDEZVOUS - (Mixed bag of Catchy hits)
2130	NEWS BEAT
2135	YOUR FAVOURITES
2230	NEWS BEAT
2235	BEDTIME MELODIES - (Music to soothe frayed nerves)
2330	NEWS BEAT
2335	BEDTIME MELODIES - (Continues)
2400	CLOSE DOWN

TUESDAY:

0553	XYLOPHONE CALL SIGNALS
0555	OPENING FORMALITIES
0600	HAPPY DAY
0630	NEWS BEAT
0635	HAPPY DAY - (Continues)
0730	NEWS BEAT
0735	HAPPY DAY - (Finale)
0800	FOR YOU AT HOME
0830	NEWS BEAT
0835	FOR YOU AT HOME - (Continues)

0900	WOMAN TO WOMAN
0930	NEWS BEAT
0935	WOMAN TO WOMAN - (Continues)
1000	DISC PARADE - A parade of the current best selling musical treats around.
1030	NEWS BEAT
1035	DISC PARADE - (Continues)
1100	WHAT THE PAPERS SAY
1105	JUJU MUSIC - Spotlight on the Music of one juju music orchestra
1200	THE WORLD AT NOON
1210	LUNCH BREAK - Light Music & Jazz
1330	NEWS BEAT
1335	BUKA CONNECTION - Indigenous Social Music
1430	NEWS BEAT
1435	BUKA CONNECTION - Part II
1530	NEWS BEAT
1535	HOMeward BOUND - (Disco trip for people on the move)
1630	NEWS BEAT
1635	HOMeward BOUND
1700	HIGH LIFE TIME - A Session of high life music old and new
1730	NEWS BEAT
1735	HIGH LIFE TIME - (Continues)
1800	THE WORLD AT SIX
1810	SPOT THE TUNE - A musical quiz show in which snippets of records are played for identification by listeners
1815	LONG THROAT JUNCTION (DRAMA SERIES) Dramatic happenings in a local food centre
1835	TEEN & TWENTY BEAT - Music for the new generation
1930	NEWS BEAT
1935	TEEN & TWENTY BEAT - (Continues)
2030	NEWS BEAT
2035	RHYTHM RENDEZVOUS - (Mixed bag of Catchy hits)
2130	NEWS BEAT
2135	YOUR FAVOURITES
2230	NEWS BEAT
2235	BEDTIME MELODIES - (Music to soothe frayed nerves)
2330	NEWS BEAT
2335	BEDTIME MELODIES - (Continues)
2400	CLOSE DOWN

WEDNESDAY:

0553	XYLOPHONE CALL SIGNALS
0555	OPENING FORMALITIES
0600	HAPPY DAY
0630	NEWS BEAT
0635	HAPPY DAY - (Continues)
0730	NEWS BEAT
0735	HAPPY DAY - (Finale)
0800	FOR YOU AT HOME
0830	NEWS BEAT
0935	FOR YOU AT HOME - (Continues)
0900	WOMAN TO WOMAN
0930	NEWS BEAT
0935	WOMAN TO WOMAN
1000	MUSIC WHILE YOU WORK - Programme of mixed music
1030	NEWS BEAT
1035	MUSIC WHILE YOU WORK - (Continues)
1100	WHAT THE PAPERS SAY
1105	REGGAE TIME - A Spotlight on Reggae hits.



NTV LAGOS

NIGERIAN TELEVISION STATIONS PROGRAMME SCHEDULE

SUNDAY

1.00	JOURNEY TO UNDERSTANDING
1.45	TAKE A BREAK
2.00	SPORTS INTERNATIONAL
4.00	SCIENCE FICTION
4.55	YOUTH SCENE
5.55	COMMERCIAL BREAK
6.00	DEVOTIONAL ½ HOUR
6.30	CHILDREN'S TIME
7.00	NEWS PANORAMA
	COMMERCIAL BREAK
7.50	VOX POP /
8.05	JULIE'S CHOICE
8.10	VILLAGE HEADMASTER
8.55	COMMERCIAL BREAK
9.00	NETWORK NEWS
9.25	COMMERCIAL BREAK
9.35	TOWARDS CIVIL RULE
10.15	COMMERCIAL BREAK
10.20	SUNDAY MOVIES
11.45	NEWS SUMMARY
11.50	NIGHT CAP

MONDAY

10.00	EDUCATIONAL TELEVISION (ONE HOUR)
3.00	EDUCATIONAL TELEVISION (ONE HOUR)
4.15	VARIETY ENTERTAINMENT
5.55	COMMERCIAL BREAK
6.00	VOICES
6.30	LAGOS STATE TODAY
7.00	NEWS PANORAMA
7.45	COMMERCIAL BREAK
7.50	TAKE A TRIP
8.30	FACE THE NATION (NETWORK)
8.55	COMMERCIAL BREAK
9.00	NETWORK NEWS
9.27	COMMERCIAL BREAK
9.35	FOR BETTER FOR WORSE
10.20	COMMERCIAL BREAK
10.25	LAGOS REPORT
10.40	PEOPLE AND PLACES
11.45	NEWS SUMMARY

TUESDAY

10.00	EDUCATIONAL TELEVISION (ONE HOUR)
3.00	EDUCATIONAL TELEVISION (ONE HOUR)
4.55	SHOW INTERNATIONAL
5.55	COMMERCIAL BREAK
6.00	OUR HEALTH
6.30	YOUNG WORLD (NETWORK)
7.00	NEWS PANORAMA
7.45	COMMERCIAL BREAK
7.50	HOT SEAT
8.30	FEMININE FANCIES
8.55	COMMERCIAL BREAK
9.00	NETWORK NEWS
9.25	COMMERCIAL BREAK
9.35	JOURNEY TO UNDERSTANDING
10.20	COMMERCIAL BREAK
10.25	COURT ROOM DRAMA
11.45	NEWS SUMMARY
11.50	NIGHT CAP

WEDNESDAY

10.00	EDUCATIONAL TELEVISION (ONE HOUR)
3.00	EDUCATIONAL TELEVISION (ONE HOUR)
4.55	ANIMAL GAME
5.55	COMMERCIAL BREAK
6.00	VILLAGE HEADMASTER
7.00	NEWS PANORAMA
7.45	COMMERCIAL BREAK
7.50	TAKE A BREAK
8.05	THE DEBATE (NETWORK)
8.55	COMMERCIAL BREAK
9.00	NETWORK NEWS
9.25	COMMERCIAL BREAK
9.35	NETWORK NEWS
10.20	COMMERCIAL BREAK
10.25	LAGOS REPORT
11.45	NEWS SUMMARY

THURSDAY

10.00	EDUCATIONAL TELEVISION (ONE HOUR)
3.00	EDUCATIONAL TELEVISION (ONE HOUR)
4.55	CHILDREN'S FILM
5.00	SPORTS
5.55	COMMERCIAL BREAK
6.00	BELLO'S WAY

7.00	NEWS PANORAMA
7.45	COMMERCIAL BREAK
7.50	TAKE A BREAK
8.05	PROGRESS REPORT (NETWORK)
8.55	COMMERCIAL BREAK
9.00	NETWORK NEWS
9.25	COMMERCIAL BREAK
9.35	HERE AND THERE
10.20	COMMERCIAL BREAK
10.25	MATTERS OF THE MOMENT
11.45	NEWS SUMMARY
11.50	NIGHT CAP

FRIDAY

10.00	EDUCATIONAL TELEVISION (ONE HOUR)
3.00	EDUCATIONAL TELEVISION (ONE HOUR)
4.55	JUNIOR DRAMA
5.55	COMMERCIAL BREAK
6.00	DEVOTIONAL ½ HOUR
6.30	COMEDY
7.00	NEWS PANORAMA
7.45	COMMERCIAL BREAK
7.50	KINNI N'KAN
8.10	MEET THE PRESS
8.30	MEETING POINT
8.55	COMMERCIAL BREAK
9.00	NETWORK NEWS
9.25	COMMERCIAL BREAK
9.35	CREDIT WORTHY
10.20	WEEK-END SPECIAL
10.55	COMMERCIAL BREAK
11.00	DETECTIVE STORY
11.45	NEWS SUMMARY
11.50	NIGHT CAP

SATURDAY

3.00	BAND STAND
4.00	ON STAGE
4.55	COMMERCIAL BREAK
5.00	SPORTS
7.00	NEWS PANORAMA
7.45	COMMERCIAL BREAK
7.50	SATURDAY RENDEZVOUS
8.30	RETROSPECT (NETWORK)
8.55	COMMERCIAL BREAK
9.00	NETWORK NEWS
9.25	COMMERCIAL BREAK
9.35	SPECIALS
10.20	COMMERCIAL BREAK
10.25	LAGOS REPORT
10.40	SATURDAY MOVIES
11.45	NEWS SUMMARY



NIGERIAN TELEVISION STATIONS PROGRAMME SCHEDULE

NTV IBADAN

SUNDAY

12.30	LOVE BOAT
1.30	REDEMPTION HOUR
2.30	SING ALONG
3.00	MASQUERADE
4.00	SOUND EXPO
5.00	SKIPPY
6.30	FIRST REPORTS
6.40	IROHIN LEREFE
6.45	TIATA YORUBA
8.30	CHILDREN'S TIME
7.00	BELLO'S WAY
7.30	VIEWS AND REPORTS
8.00	SOCCER
8.00	NETWORK NEWS
9.30	IROHIN
9.40	HIGHLIGHT
10.40	RANDOM ISSUES
11.00	NEWS UPDATE
11.10	JUSTICE
12.10	STATION CLOSING

MONDAY

4.30	SESAME STREET
5.30	FIRST REPORTS
5.40	IROHIN LEREFE
5.45	SCHOOL CHALLENGE
6.30	ERE AGBE
7.00	AWADA
7.30	VIEWS AND REPORTS
8.00	ENTERTAINERS ON TOUR
8.30	FACE THE NATION (NETWORK)
8.00	NETWORK NEWS
8.30	IROHIN
8.40	POLITICAL TALK
8.10	PLAYHOUSE
8.00	NEWS UPDATE
8.10	WRESTLING
8.00	STATION CLOSING

TUESDAY

4.30	ENGLISH IS!
5.00	HAPPY TIME
6.30	FIRST REPORTS
6.40	IROHIN LEREFE
6.45	SPOTLIGHT ON OYO STATE
6.30	YOUNG WORLD (NETWORK)
7.00	KERIKERI
7.30	VIEWS AND REPORTS
8.00	SPEAK OUT
8.30	KAARO OJIRE
9.00	NETWORK NEWS
9.20	IROHIN
9.40	FACE THE PRESS
10.40	LIVING TOMORROW
11.00	NEWS UPDATE
11.10	ROOKIES
12.10	STATION CLOSING

WEDNESDAY

4.30	SESAME STREET
5.30	FIRST REPORTS
5.40	IROHIN LEREFE
5.45	THE HOW & WHY OF NATURE
6.30	ILERA
7.00	ALAWADA
7.30	VIEWS AND REPORTS
8.00	POLITICAL DEBATE (NETWORK)
9.00	NETWORK NEWS
9.30	IROHIN
9.40	SPORTS REPORT
10.10	ETO ISELU
11.00	NEWS UPDATE
11.10	MID WEEK SPECIAL
12.10	STATION CLOSING

THURSDAY

5.00	MATHEMATICS/JOLLY TRAIN
5.30	FIRST REPORTS
5.40	IROHIN LEREFE
5.45	OGUN STATE PANORAMA
6.30	AYELU
7.00	BODE WASIMI
7.30	VIEWS AND REPORTS
8.00	PROGRESS REPORT (NETWORK)

TUESDAY

9.30	NETWORK NEWS
9.30	IROHIN
9.40	AGBORANDUN
10.40	RANDOM ISSUE
11.00	NEWS UPDATE
11.10	THE NEW AVENGERS
12.10	STATION CLOSING

FRIDAY

5.00	SESAME STREET
6.30	FIRST REPORTS
6.40	IROHIN LEREFE
6.45	ASALAM ALEKUN (Religious)
6.30	ITUNLUTO
7.00	KOOTU ASIPA
7.30	VIEWS AND REPORTS
8.00	CONTROVERSY
9.00	NETWORK NEWS
9.30	IROHIN
9.40	NEXT WEEK ON NTV
10.10	PRESS CONFERENCE (Network)
11.00	NEWS UPDATE
11.10	DISCO SCENE
12.10	STATION CLOSING

SATURDAY

12.30	ARE YOU BEING SERVED?
1.30	VILLAGE HEADMASTER
2.00	NEW COMERS
2.30	THE ANSWER (Network)
4.00	SPORTS GALORE
5.30	FIRST REPORTS
5.40	IROHIN LEREFE
5.45	SPORTS GALORE
6.30	STAR SHOW CASE
7.30	VIEWS AND REPORTS
8.00	THE VETERANS
8.30	RETROSPECT
9.00	NETWORK NEWS
9.30	IROHIN
9.40	POLITICAL TALK & POLITICAL PANORAMA
10.10	NEWSREEL
10.40	SPORTS ROUND OF
11.00	NEWS UPDATE
11.30	MOVIES
12.10	STATION CLOSING



NIGERIAN TELEVISION STATIONS PROGRAMME SCHEDULE

NTV PORT HARCOURT

7.00	YOU AND THE LAW	9.25	PERSONAL PAID ANNOUNCEMENTS
7.30	WORLD NEWS		
7.45	NEWS TRANSLATIONS	9.30	OUR GUEST
8.05	SCOPE THEATRE (SOSEI)	10.00	PRESS CONFERENCE
9.00	NETWORK NEWS		TRANSITION
9.25	PERSONAL PAID ANNOUNCEMENTS	11.00	DETECTIVE
		11.50	NEWS SUMMARY
9.30	PLATFORM		
10.30	DETECTIVE		
11.15	NEWS SUMMARY		

TIME	SUNDAY
2.00	NEWS IN BRIEF
2.05	PAPERS TODAY
2.15	SOCCER
3.05	FOR XTIAN
4.00	FESTAC
4.45	REVIEW OF THE WEEK
5.00	WATCH AND PRAY
6.00	FEED BACK
6.30	CHILDREN'S TIME
7.00	COMEDY/ADVENTURE
7.30	WORLD NEWS
7.45	NEWS TRANSLATIONS
8.05	VILLAGE HEADMASTER
9.00	NETWORK NEWS
9.25	PERSONAL PAID ANNOUNCEMENTS
9.30	MEDICAL CENTRE
10.15	THE CONCERT
11.00	EPILOGUE
11.15	NEWS SUMMARY

TIME	WEDNESDAY
4.30	EDUCATIONAL TELEVISION
5.30	INTERLUDE
5.40	NEWS IN BRIEF
6.45	PAPERS TODAY
6.50	JUST WILLIAM
6.15	INTERLUDE
6.30	HOTEL DE JORDAN
7.30	WORLD NEWS
7.45	NEWS TRANSLATIONS
8.05	DEBATE
9.00	NETWORK NEWS
9.25	PERSONAL PAID ANNOUNCEMENTS
9.30	SHOW OF THE WEEK
10.30	MID-WEEK MOVIE
12.00	NEWS SUMMARY

TIME	SATURDAY
2.00	NEWS IN BRIEF
2.05	PAPERS TODAY
2.15	JUNIOR DEBATE
3.05	MUSICAL
3.15	WEEKEND EXTRAVAGANZA
4.30	COMEDY
5.00	SPORTS
7.00	SCHOOLS THEATRE
7.30	WORLD NEWS
7.45	NEWS TRANSLATIONS
8.00	CANDID CAMERA
8.30	RETROSPECT
9.00	NETWORK NEWS
9.25	PERSONAL PAID ANNOUNCEMENTS
9.30	POLITICAL FORUM
10.30	WEEKEND MOVIE
12.00	NEWS SUMMARY

TIME	MONDAY
4.30	EDUCATIONAL TELEVISION
5.30	INTERLUDE
5.40	NEWS IN BRIEF
5.45	PAPERS TODAY
5.50	SCHOOLS QUIZ
6.30	NIGERIAN DANCES
7.00	SPORTS REPORT
7.30	WORLD NEWS
7.45	NEWS TRANSLATIONS
8.00	BUSINESS AND YOU
8.30	FACE THE NATION
9.00	NETWORK NEWS
9.25	PERSONAL PAID ANNOUNCEMENTS
9.30	PLAY OF THE WEEK
10.30	WRESTLING
11.15	NEWS SUMMARY

TIME	THURSDAY
4.30	EDUCATIONAL TELEVISION
5.30	INTERLUDE
5.40	NEWS IN BRIEF
6.45	PAPERS TODAY
6.50	KINDAFAIR
6.30	FOLK DRAMA
7.00	YOUR HEALTH
7.30	WORLD NEWS
7.45	NEWS TRANSLATIONS
8.05	PROGRESS REPORT
9.00	NETWORK NEWS
9.25	PERSONAL PAID ANNOUNCEMENTS
9.30	LOVE BOAT
10.30	COURT ROOM DRAMA
11.45	NEWS SUMMARY

TIME	TUESDAY
4.30	EDUCATIONAL TELEVISION
5.30	INTERLUDE
5.40	NEWS IN BRIEF
5.45	PAPERS TODAY
5.50	FUN SPOT
6.30	YOUNG WORLD

TIME	FRIDAY
4.30	EDUCATIONAL TELEVISION
6.30	INTERLUDE
5.40	NEWS IN BRIEF
5.45	PAPERS TODAY
5.50	ISLAMIC THOUGHTS
6.15	WILD LIFE
6.45	THE ANGELS
7.30	WORLD NEWS
7.45	NEWS TRANSLATIONS
8.00	COMMERCIAL SPOTLIGHT
8.15	FAMILY RENDEZVOUS
9.00	NETWORK NEWS



A section of NTV Port-Harcourt.

FRCN

LAGOS PROGRAMME

As close to you as your
radiodial.

Receiving FRCN LAGOS Programme clearly
on your radio depends on only 2 things:

- (i) Knowing the right frequency.
- (ii) Tuning your set correctly.

MEDIUM WAVE:

05.30-0005 Hrs ... 1088 kHz-276 Metres.

FREQUENCY MODULATED BAND (VHF-FM)

05.30-0005 Hrs ... 92.935 MHz.

SHORT WAVE:

05.30-00.05 Hrs ... 4.990 MHz-60 Metre Band.
11.00-18.00 Hrs ... 7.275 MHz-41 Meter Band.

For listeners outside Lagos and throughout
the country, the recommended frequencies for
receiving FRCN LAGOS Programmes direct are:-

From 05.30-00.05 Hrs ... 4.990 MHz.
From 11.00-18.00 Hrs ... 7.275 MHz.



FRC-2 PROGRAMME SCHEDULE

MF - 1458KHz - 206 metres 0600 - 1205 hrs
1530 - 0000 hrs
FM - Stereo 97.66MHz 0600 - 0000 hrs

1200 THE WORLD AT NOON
1210 JUST A CHAT
1240 LUNCH BREAK - Light Music & Jazz
1300 NEWS BEAT
1335 BUKA CONNECTION - Indigenous & Social Music
1400 NEWS BEAT
1445 BUKA CONNECTION - Part II
1500 NEWS BEAT
1535 HOMEWARD BOUND - (Disco trip for people on the move)
1630 NEWS BEAT
1635 HOMEWARD BOUND - (Continual)
1700 POP ROUND THE WORLD - A date with pop hits and classics from all over the globe
1730 NEWS BEAT
1735 POP ROUND THE WORLD - (Continual)
1800 THE WORLD AT SIX
1810 SPOT THE TUNE
1815 NA TRUE I TALK - FOLK TALES
1830 - CONGRATS - (1-week L. Students)

1930 NEWS BEAT
1935 JUJU MUSIC
2030 NEWS BEAT
2035 RHYTHM RENDEZVOUS
2130 NEWS BEAT

2135 YOUR FAVOURITES
2230 NEWS BEAT
2235 STEREO JAZZ CLUB - A Session of Jazz for all lovers of Jazz music
2330 NEWS BEAT
2335 STEREO JAZZ CLUB - (Continual)
2400 CLOSE DOWN

THURSDAY

0553 XYLOPHONE CALL SIGNALS
0555 OPENING FORMALITIES
0600 HAPPY DAY
0630 NEWS BEAT
0635 HAPPY DAY - (Continual)
0730 NEWS BEAT
0735 HAPPY DAY - (Final)
0800 FOR YOU AT HOME
0830 NEWS BEAT
0900 WOMAN TO WOMAN
0930 NEWS BEAT
0935 WOMAN TO WOMAN
1000 SOUNDS TROPICANA - NEWS BEAT
1035 SOUNDS TROPICANA - (Final)
1100 WHAT THE PAPERS SAY -
1105 HIGH LIFE TIME - Highlife Music
1200 THE WORLD AT NOON
1210 TAKE ONE
1215 LONG THROAT JUNCTION (repeat from Tuesday 1815)
1230 LUNCH BREAK - LIGHT MUSIC & Jazz
1330 NEWS BEAT
1335 BUKA CONNECTION - Indigenous Social Music
1430 NEWS BEAT
1435 BUKA CONNECTION - Part II
1530 NEWS BEAT
1535 HOMEWARD BOUND - (Disco for people on the move)
1630 NEWS BEAT
1635 HOMEWARD BOUND - (Continual)
1700 CALYPSO CARNIVAL
1730 NEWS BEAT
1735 ALBUM SHOWCASE - Facts about and music from a current album by a performing artiste
1800 WORLD AT SIX
1815 MUSIC OF OUR NEIGHBOURS
1830 BAND OF THE WEEK - Music of
1930 NEWS BEAT
1935 RHYTHM RENDEZVOUS - Mixed bag of catchy rhythm
2030 NEWS BEAT
2035 RHYTHM RENDEZVOUS - Mixed bag of Catchy Rhythm
2130 NEWS BEAT

1735 JUNIOR CHOICE - (Continual)
1800 THE WORLD AT SIX
1810 SPOT THE TUNE
1815 THAT'S LIFE - Stories
1830 STAR CHOICE - Facts about, and music of a Star performer
1930 NEWS BEAT
1935 MARTIN STREET SPECIAL - A magazine programme for all listeners. (Repeat Friday 1000)

2000 JUJU MUSIC
2030 NEWS BEAT
2035 RHYTHM RENDEZVOUS
2130 NEWS BEAT
2135 YOUR FAVOURITES
2230 NEWS BEAT
2235 IN A SENTIMENTAL MOOD
2330 NEWS BEAT
2335 IN A SENTIMENTAL MOOD - (Continual)
2400 CLOSE DOWN

FRIDAY

0553 XYLOPHONE CALL SIGNALS
0555 OPENING FORMALITIES
0600 HAPPY DAY
0630 NEWS BEAT
0635 HAPPY DAY - (Continual)
0730 NEWS BEAT
0735 HAPPY DAY - (Final)
0800 FOR YOU AT HOME
0830 NEWS BEAT
0835 FOR YOU AT HOME - (Continual)
0900 WOMAN TO WOMAN
0930 NEWS BEAT
0935 WOMAN TO WOMAN - (Continual)
1000 MARTIN STREET SPECIAL - A repeat from Thursday
1025 TAKE ONE - Interlude of music
1030 NEWS BEAT
1035 YOUR CHOICE - (Continual)
1100 WHAT THE PAPERS SAY
1105 REGGAE TIME
1200 THE WORLD AT NOON
1210 TAKE ONE
1215 NA TRUE I TALK (Repeat from Wednesday 1815)
1230 LUNCH BREAK - Light Music & Jazz
1330 NEWS BEAT
1335 BUKA CONNECTION - Indigenous Social Music
1430 NEWS BEAT
1435 BUKA CONNECTION - Part II
1530 NEWS BEAT
1535 HOMEWARD BOUND - (Disco trip for people on the move)
1630 NEWS BEAT
1635 HOMEWARD BOUND - (Continual)
1700 CALYPSO CARNIVAL
1730 NEWS BEAT
1735 ALBUM SHOWCASE - Facts about and music from a current album by a performing artiste
1800 WORLD AT SIX
1815 MUSIC OF OUR NEIGHBOURS
1830 BAND OF THE WEEK - Music of
1930 NEWS BEAT
1935 RHYTHM RENDEZVOUS - Mixed bag of catchy rhythm
2030 NEWS BEAT
2035 RHYTHM RENDEZVOUS - Mixed bag of Catchy Rhythm
2130 NEWS BEAT

2135 YOUR FAVOURITES
2200 NEWS BEAT
2235 CITIZEN MUDA - (Repeat from Sunday 1400)
2305 MUSIC NIGHT - FRIDAY NIGHT - (Final)
2400 NEWS BEAT
2430 CLOSE DOWN

SATURDAY

0553 XYLOPHONE CALL SIGNALS
0555 OPENING FORMALITIES
0600 HAPPY DAY
0630 NEWS BEAT
0635 HAPPY DAY - (Continual)
0730 NEWS BEAT
0735 HAPPY DAY - (Final)
0800 HIGH LIFE TIME
0830 NEWS BEAT
0935 JUNIOR CHOICE
0930 NEWS BEAT
0935 JUNIOR CHOICE - (Continual)
1000 MUSIC ON THE MOVE - bag of Quincy hits from FRC 2 AM/FM STEREO
1030 NEWS BEAT
1035 MUSIC ON THE MOVE - (Continual)
1100 WHAT THE PAPERS SAY
1105 POP ROUND THE WORLD - A heavy heavy Soulful Session of trendy hits
1200 WORLD AT NOON
1210 POP ROUND THE WORLD - (Continual)
1300 THINKING ALOUD - Simon Sola's witty talks of the lighter side of life
1315 ROOTS - Indigenous Social Music Apela, Ekombi, Waka etc.
1330 NEWS BEAT
1335 ROOTS - (Continual)
1430 NEWS BEAT
1435 SATURDAY JUMP - An After noon dance treat
1530 NEWS BEAT
1535 TROPICAL CARNIVAL -

1630 SPORTS CALL
1635 GATELINE LAGOS - News letter on one or more topics happenings in Lagos during the week
1900 ARTISTE OF THE WEEK - Music of the most prominent artiste of the week
1930 NEWS BEAT
1935 JUJU MUSIC
2030 NEWS BEAT
2035 RHYTHM RENDEZVOUS - Mixed bag of catchy hits
2130 NEWS BEAT
2135 YOUR FAVOURITES
2230 NEWS BEAT
2235 SATURDAY NIGHT DISCO - A long session of disco music with the best of the night
2330 NEWS BEAT
2335 SATURDAY NIGHT DISCO - (Continual)
2400 NEWS BEAT

FRCN: ENUGU

PROGRAMME SCHEDULE

Shortwave :
6. 025 Mgh in the
49 Metre Band.

Mediumwave: 363 Meters

SUNDAYS:

0530 Call sign
0533 Station Announcement
0533.30 National Anthem/The Pledge
0535 Frequency announcements /Programme Summary
0540 Family Prayers (Produced by Fr. Amadi)
0555 Instrumental music/OFN Jingle in one of the languages
0600 Thought for the day
0603 Organ music
0615 Lift up your Heart
0630 Zonal News in English
0640 The week Ahead — is preview of some of the programmes for broadcast in the coming week;
0657 Thought for the day (from 0600 hrs)
0700 National Network News/ New Analysis
0715 Late worship
0800 News Summary
0803 Ozi Ekene (request programme in Igbo)
0900 Zonal News Summary (in Efik, Igbo, Izon and Tiv)
0920 Traditional Music (from Benua)
0930 Artists of the Week (spotlights music artistes from Nigeria. Repeat Friday 1330hrs)
1000 World Briefs (a review of some world news)
1003 The Hymns we love
1030 Igbo Play —(repeat Wed. 2230 hrs)
1103 You and the Law (Talks) (Rpt Monday 0803)
115 Choral Singing
1130 Twenty Questions (Rpt Tuesday 2130hrs) (A radio Parlor game)
1200 Zonal News in English
1210 Preacher's Show (from Sat. 2215hrs)
1245 The Week Ahead (from 0640hrs)
1300 The World at One
1305 Sunday Request
1400 News Summary
1403 Concert Music
1500 Radio Theatre (repeat Thursday 1630hrs)
1530 Zonal News/Commentaries (English)
1545 Neme Ye — Samuel Ukochio (Efik) (a programme of music chat-chats, tit bits and fun.
1600 National Network News
1610 Programme Summary (DCA)

1615 Schools Challenge (rpt. Thursday 2130hrs)
1645 Children's Opinion — a programme of questions and answers for Children under 12 (from Sat. 1045).
1700 Zonal News/Commentaries (in Efik/Igbo)
1730 Know Your Neighbour/ Talking Point
1st Talking Point:—
1800 Zonal News/Commentaries (Izon/Tiv)
1830 Hello Young People rpt. Thursday 1215
A magazine programme for the young and young at heart.
1900 The World at One — Translations in Efik, Igbo, Izon and Tiv
1930 Women's half-hour (from Saturday 0830)
2000 Zonal News in English
2015 The Critic — rpt Monday 1405
2020 Sunday Night Service
2100 News Summary
2103 Traditional Music (Cross River)
2130 Community Hymn Singing
2200 National Network News/ Analysis
2215 Meet the F.R.C.N. Choir (rpt. Wed. 0815)
2230 Sports Magazine (Rpt. Monday 2130)
2300 News Summary
2303 Sunday Serenade — (a programme of soft, light and sweet music to lull one to sleep)
2350 The Epilogue
0003 CLOSE DOWN/ NATIONAL ANTHEM/ THE PLEDGE.

MONDAYS:

0530 Call Sign
0533 Station Announcement
0533 National Anthem/The Pledge
0535 Frequency announcements /Programme summary
0540 Family Prayers
0555 Instrumental Music/OFN Jingle in one of the languages
0600 Thought for the day
A three minutes daily philosophical programme that should leave the listener with a guiding principle for the rest of the day
0603 Express Nigerian Pt 1 (Ansalet Madubuku)
0630 Zonal News in English

0640 Express Nigerian Pt II
0657 Thought for the Day — from 0600hrs
0700 National Network News/ Analysis
0715 Express Nigerian Pt. III
0800 Zonal News Summary in English
0803 You and the Law —from Sunday 1103hrs
0815 Briecap (music from the states of the zone)
0900 News Summary (in Efik, Igbo, Izon and Tiv)
0920 Highlife Times compiled
1000 World Briefs
1003 Zolianu Egwu (A Music Programme in Igbo)
1030 Our Kind of Music (in one of the languages each week — repeat Tuesday 1930hrs)
1100 News Summary
1103 Music while you work — Regina Nwokonkwo
1130 Matters of the moment (Efik/Igbo) rpt. Tuesday 2215hrs
1200 Zonal News in English
1210 Music Africana — Chioma Nwanoku
1300 The World at One
1305 Ye Ikulu mi — a request in Izon
1400 Editorial Review
1405 The Critic (from Sunday 2015hrs)
1410 Traditional Music (Anambra)
1430 Inumba/Highlife Time — Rpt. Wed. 1430hrs
1500 World Briefs
1503 Traditional Music (Imo)
1515 Children's Quiz Time — Rpt. Wed. 1545hrs
1530 Zonal News/Commentaries (English)
1645 Kikwe U Mbeyev — rpt Wed. 1315hrs (Children's Magazine Programme in Tiv)
1600 National Network News
1610 Programme Promotion
1615 What do you want? A Library Staff introduces some new records in the library.
1630 Toward Civil Rule — rpt. Wednesday 0845hrs
1645 Poetry Time — Rpt. Friday 1545 hrs.
1700 Zonal News/Editorials in Efik and Igbo
1730 Ini Neme Ye Mbre/Mboho Iban — Rpt. Tue. 1030
1800 Zonal News/Editorials (Izon/ Tiv)
1830 Know Your Neighbour/ Talking Point (from Sunday 1 730hrs)

FRCN: ENUGU

PROGRAMME SCHEDULE

1800 The World at One - Translation in Efik, Igbo, Izoan and Tiv.
 1830 Cultural Oeriscope - Rept. Thurs. 1830hrs.
 2000 News/Commentaries in English
 2018 Traditional Music (Rivers - compilation)
 2030 Back to Land - Rept. Wednesday 2130hrs.
 2100 News Summary
 2103 Short Story in Efik - (Rept. Tues. 0830hrs)
 2118 Evening Worship.
 2130 Sports Magazine - from Sunday 2230hrs
 2200 National Network News/Analysis
 2218 The Bible Today
 2230 Our Social Music - Rept. Wednesday 1330hrs.
 2300 News Summary
 2303 Music to end the day - a programme of soft light and sweet music
 0000 News at Midnight
 0003 CLOSE DOWN/NATIONAL ANTHEM/THE PLEDGE

TUESDAYS:

0530 Call sign
 0533 Station Announcement
 0533 National Anthem/The Pledge
 0536 Frequency announcements/Programme summary
 0640 Family Prayers
 0658 Instrumental music/OFN in the Language.
 0800 Thought for the day
 0803 Ne Nder Vee? (a music programme in Tiv)
 0830 Zonal News in English
 0840 Ne Nder Vee? Part II
 0857 Thought for the day - from 0800hrs
 0700 National Network News/Analysis
 0718 Ne Nder Vee? Part III
 0800 Zonal News Summary
 0803 Short story in Efik - from Monday 2103hrs
 0818 Music for your delight
 0900 News summaries in Efik/Igbo/Izoan/Tiv
 0920 Music Rendezvous
 1000 World Briefs
 1003 Ekene Ndi Ahie - a request programme for traders presented in Igbo.
 News Summary
 1100 Music while you work
 1200 Zonal News (English)
 1210 Music Extravaganza
 1300 The World at One
 1308 Tair Pinen - a request in Tiv

1400 Editorial Review
 1408 Tunes in Tempo
 1448 Poetry Time - from Monday 1645hrs.
 1800 World Briefs
 1803 Drums and Voices - Rept. Saturday 0803hrs
 1830 Zonal News in English
 1840 On Your Way Home
 1800 National Network News Programme Promotion (DCA)
 1818 Children's Corner - Rept. Friday 1315hrs
 1830 Drop us a line - Request in English
 1700 Zonal News/Editorials in Efik/Igbo
 1730 From Our Gramophone Library
 1800 Zonal News/Editorials in Izoan/Tiv
 1830 Doctor's Casebook
 1900 The World at One - Translations in Efik, Igbo, Izoan and Tiv.
 1930 Our Kind of Music - from Monday 1030hrs
 2000 Zonal News (English)
 2010 Tomorrow on F.R.C.N. (DCA) A review of the next day's programmes
 2018 Traditional Music - Benue (Compilation)
 2030 Izoan Otu Ifo - Magazine in Izoan, Rept. Thurs. 1030hrs
 2100 News Summary
 2103 Short Story in Igbo - Rept. Wed. 0803hrs
 2118 Evening Worship
 2130 Twenty Questions from Sunday 1130hrs
 2200 National Network News/Analysis
 2218 Matter of the moment (Efik/Igbo) from Mon. 1130hrs
 2245 Meditation/Our Ethics - Rept. Thurs. 2015hrs
 2300 News Summary
 2303 Music to End the Day - a programme of soft, light and sweet music
 0000 News at Midnight
 0003 CLOSE DOWN/NATIONAL ANTHEM/THE PLEDGE

WEDNESDAYS

0530 Call Sign
 0633 Station Announcement
 0633 National Anthem/The Pledge
 0636 Frequency announcements /Programme Summary
 0640 Family Prayers
 0658 Instrumental Music/OFN Jingle in one of the Languages.

0600 Thought for the Day.
 0603 E Mesiere Ndito Ete (Efik Music Programme.)
 0630 Zonal News in English
 0640 E Mesiere Ndito Ete Pt. II
 0657 Thought for the day - from 0600hrs
 0700 National Network News/Analysis
 0718 E Mesiere Ndito Ete Pt. III
 0800 Zonal News Summary - English
 0803 Short Story in Igbo - from Tuesday 2103hrs
 0818 Meet the FRCN Choir - from Sunday 221hrs
 0830 Meet the Minirels - rept Thursday 2245hrs
 0845 Towards civil Rule - from Monday 1630hrs
 0900 News Summaries (Efik/Igbo/Izoan/Tiv)
 0920 Music Rendezvous
 1000 World Briefs
 1003 Announcer's Choice - DCA
 1015 Traditional Music - Cross River
 1030 Ini Name Ye Mbre/ Mbohon Iban - from Mon. 1730. Francis Ephraim/ Samuel Ukocho.
 News Summary
 1100 Music While you work.
 1103 Matters of the moment (Izoan/Tiv)
 1130 Rept. Friday 2015hrs.
 1200 Zonal News (English)
 1210 Music for Dancing
 1300 The World at One
 1305 Music Break (DCA)
 1315 Kukwa V Mbayev - from Monday 1545hrs
 Children's Programme in Tiv.
 1330 Our Social Music - from Monday 1430hrs
 1400 Editorial Review
 1405 Home made sounds
 1430 Inumba (Tiv Drama) from Monday 1430hrs
 1500 Music Rendezvous
 1503 World Briefs
 1500 Oge Umuaka - Rept. Friday 1503hrs
 1503 (Magazine for Children in Igbo)
 1530 Zonal News/Commentaries (English)
 1545 Children's Quiz Time - from Monday 1515hrs
 1600 National Network News
 1610 Music Round the States - To talk of many things - Rept. Thurs. 1615hrs
 1700 Zonal News/Editorials - (Efik/Igbo)
 1730 Heritage - Rept. Friday 21.30hrs

FRCN: ENUGU

PROGRAMME SCHEDULE

1610	Programme Promotion (DCA)	0603	Drums and Voices (from Tues. 1503hrs)	1530	Zonal News (English)
1615	Doctor's Casebook - (from Tues. 1830hrs)	0630	Women's Half Hour - rept. Sun. 1930hrs	1640	Music From Other Zones
1645	Ayoketa - from Thursday 0830hrs	0900	Zonal News Summaries (Efik/Igbo/Izon/Tiv)	1600	National Network News
1700	Zonal News/Editorials (Efik/Igbo)	0920	Music Break (DCA)	1810	Programme Promo.
1730	Imongo (Tiv Magazine) from Thurs. 2030hrs	0930	Mainfeature/Matters of the Moment/Focus (from Wed. 1930hrs)	1815	Announcer's Choice - (DCA)
1800	Zonal News/Editorials (Izon/Tiv)	1000	World Briefs	1630	Sports Pavilion
1830	Personality Spot (Talks) rept. Sat. 1315hrs	1003	Ekom Do - (request In Efik)	1830	Weekend Melody
1900	The World at One - Translations in Efik/Igbo/Tiv	1045	Children's Opinion (rept. Sun. 1645hrs)	1900	The World at One - Translations in Efik/Igbo/Izon/Tiv
1930	Iko Ne Dou (from 1130hrs)		Give us your Answers: Here a panel of little children will give answers to questions sent in by other children.	1930	View Point (from Thursday 1930hrs)
2000	Zonal News/Commentaries (English)	1100	News Summary	2000	Zonal News (English)
2015	Matters of the moment (Izon/Tiv) from Wednesday 1130hrs	1103	Weekend Vibrations	2010	Tomorrow on F.R.C.N. (DCA) (a review of the next day's programmes)
2045	Christian Comment	1130	The Week in review (rept. 2130hrs) A programme highlighting the major events in the zone for the passing week.	2015	Announcer's Choice
2100	News Summary	1200	Zonal News (English)	2030	Focus on Community Development (Languages) from Wednesday 1230hrs.
2103	Sports Mainpoints	1210	Ihwa - I - Mbasulev - A Tiv request programme for Farmers	2100	News Summary (English)
2115	Evening Worship Heritage (from Wednesday 1730hrs)	1300	The World at One	2103	Organ Music
2200	National Network News/Analysis	1303	Editorial Review	2115	Evening Worship
2215	The Bible Today	1306	Music Break (DCA)	2130	The Week in Review (from 1130hrs)
2230	Izu Ezue - (from 0930hrs) This is a news magazine programme which reviews events around the zone within the week	1315	Personality Spot - (from Friday 1830hrs)	2200	National Network News/Analysis
2300	News Summary	1345	Meet the Minstrels - (from Thurs. 2245hrs)	2215	Preacher's Show (rept. Sunday 1210hrs)
2303	Music to End the Day - (a programme of soft, light and sweet music) - DCA	1400	Zonal News/Editorials (Efik/Igbo)	2250	Music till Eleven - (DCA)
0000	News at Midnight	1430	News Highlights	2300	News Summary
0003	CLOSE DOWN/NATIONAL ANTHEM/THE PLEDGE.	1500	Zonal News/Editorials (Izon/Tiv)	2303	Saturday Night is Music Night - (featuring live bands)
				0000	News at Midnight
				0003	CLOSE DOWN/NATIONAL ANTHEM/THE PLEDGE

SATURDAYS:

0530	CALL SIGN
0533	Station Announcement
0533	National Anthem/The Pledge
0535	Frequency announcements/ Programme Summary
0540	Family Prayers
0555	Instrumental Music/OFN Jingles in one of the languages.
0600	Thought for the day
0603	Day Don Break Pt. I
0630	Zonal News (English)
0640	Day Don Break O Pt. II
0657	Thought for the day (from 0600hrs)
0700	National Network News/Analysis
0715	Day Don Break O Pt. III
0800	Zonal News Summary (English)



Miss Patience Nwator, Producer, Women and Children FRCN, Enugu (left) and Mrs. Chinwe Ogbogu, one of the Artistes in the studio.

RADIO BENDEL

PROGRAMME SCHEDULE

773KHz - 388 metres
4.932MHz - 60 metres

0630 - 0005 hrs

SUNDAYS:

05.30	DRUM SIGNAL
05.33	STATION ANNOUNCEMENT
05.33.30	NATIONAL ANTHEM
05.34	NATIONAL PLEDGE
05.34.30	REQUENCY ANNOUNCEMENT
05.35	PROGRAMME SUMMARY
05.40	FAMILY PRAYERS
05.50	READING FROM THE HOLY QURAN
06.00	NEWS AT DAWN (State)
06.03	THOUGHT FOR THE DAY
06.06	MORNING MELODIES
06.30	THE WEEK AHEAD
06.45	CHRISTIAN OUTLOOK/SUNDAY SCHOOL* (Last Sunday of the month)
07.10	ORGAN MUSIC
07.15	LET'S WORSHIP
08.00	RADIO CHOIR (Music Dept.)
08.15	HERITAGE
08.30	WOMEN'S CORNER
09.00	SPIRITUALS (Dixon)
09.15	VIEW POINTS
09.45	ANNOUNCER'S CHOICE
09.55	ATTENTION PLEASE
10.00	DROP US A LINE
10.30	DRAMA
11.00	NEWS IN BRIEF
11.03	BENDEL MUSIC ON RECORDS
11.30	RADIO VARIETY SHOW (V. & L.E.)
12.00	NEWS IN BRIEF
12.03	FAMILY FAVOURITE (COMM.)
13.10	A LOOK AT LIFE
13.15	CHILDREN'S WORLD (Rpt. from Thur. 16.10 Hrs.)
13.30	MUSIC GRILL
13.50	SOCIAL MUSIC (Music Dept.)
15.20	PERSONAL PAID ANNOUNCEMENT
15.30	FEATURES
16.10	INTERLUDE/JINGLES
16.15	SCHOOLS CHALLENGE
16.45	INTERLUDE (DCA)
17.00	MUSIC OF OUR STATE
17.30	DRAMA IN LANGUAGES (Rpt. Mob. @ 22.30)
18.00	PERSONAL PAID ANNOUNCEMENTS
18.10	MUSIC BREAK
18.30	DELTA PANORAMA
19.10	MUSIC INTERLUDE
19.15	THE WEEK IN RETROSPECT (Features)
19.45	TOWARDS BETTER FARMING
20.00	NEWS IN BRIEF
20.03	LIGHT INSTRUMENTAL MUSIC
20.15	SUNDAY NIGHT SERVICE
21.00	OUR SPORTING REPORT
21.30	COMMUNITY HYMN SINGING
22.10	THOUGHT FOR THE DAY
22.15	CALLING NIGERIA
22.45	CHORAL SINGING
23.00	MUSIC FROM THE CLASSICS
00.00	NEWS AT MIDNIGHT
00.05	CLOSING ANNOUNCEMENT

00.05.30

NATIONAL PLEDGE & ANTHEM

MONDAYS:

05.30	DRUM SIGNAL
05.33	STATION ANNOUNCEMENT
05.33.30	NATIONAL ANTHEM
05.34	NATIONAL PLEDGE
05.34.30	FREQUENCY ANNOUNCEMENT
05.35	PROGRAMME SUMMARY
05.40	FAMILY PRAYERS
05.50	READING FROM THE HOLY QURAN
06.00	NEWS AT DAWN
06.03	THOUGHT FOR THE DAY
06.05	TODAY'S SHOW (COMM.)
06.06	THOUGHT FOR THE DAY
06.10	NIGERIAN BEATS (COMM.)
06.15	THE WEEK IN RETROSPECT
06.20	THE CHOICE IS MINE
06.25	REGGAE TIME (COMM.)
06.30	RITUAL MUSIC (Culture)
06.35	PERSONAL PAID ANNOUNCEMENT
06.40	FOR YOU AT HOME
06.45	NEWS IN BRIEF
06.50	MY TASTE IN MUSIC
07.00	ITS AKO MUSIC
07.05	ISOKO MAGAZINE
07.10	NEWS IN BRIEF (State)
07.15	MID-DAY MELODIES (COMM.)
07.20	MERRY GO ROUND (COMM.)
07.25	NEWS IN BRIEF
07.30	MERRY GO ROUND (COMM.)
07.35	HOME MADE SOUNDS (COMM.)
07.40	PERSONAL PAID ANNOUNCEMENT
07.45	STATE NEWS IN ENGLISH, EDO & IGBO
07.50	INTERLUDE/JINGLES
07.55	THIS WEEK'S GUEST/PEOPLES VIEWS
08.00	DELTA PANORAMA (Rpt. from Sun. 18.30 Hrs. (Features))
08.05	STATE NEWS IN ENGLISH, EZON & ISOKO (Editor)
08.10	MUSIC AFRICANA (COMM.)
08.15	PERSONAL PAID ANNOUNCEMENT
08.20	LISTENERS CHOICE (COMM.)
08.25	DETTIES OF OUR LAND
08.30	MUSIC INTERLUDE
08.35	STATE NEWS IN ENGLISH, ITSEKIRI & URHOB
08.40	IBCTA (Edo Half Hour Magazine)
08.45	SHORT STORY IN DIALECT (Edo/Igbo)
08.50	EVENING WORSHIP
08.55	MIXED MUSIC (Music Dept.)
09.00	THOUGHT FOR THE DAY
09.05	MUSIC INTERLUDE
09.10	DRAMA IN LANGUAGES (one to six)
09.15	MESSAGE OF ALLAH
09.20	MAGIC MOMENT
09.25	NEWS AT MIDNIGHT (State)
09.30	CLOSING ANNOUNCEMENT
09.35	NATIONAL PLEDGE/ANTHEM

TUESDAYS:

05.30	DRUM SIGNAL
05.33	STATION ANNOUNCEMENT
05.33.30	NATIONAL ANTHEM
05.34	NATIONAL PLEDGE
05.34.30	FREQUENCY ANNOUNCEMENT
05.35	PROGRAMME SUMMARY
05.40	FAMILY PRAYERS
05.50	READING FROM THE HOLY QURAN
06.00	NEWS AT DAWN (State)
06.03	THOUGHT FOR THE DAY
06.05	YOURS FOR THE ASKING (COMM.)
06.10	THOUGHT FOR THE DAY
06.15	NIGERIAN BEATS
06.20	MBENI/IGARRA REQUEST
06.25	MY TASTE IN MUSIC
06.30	SOUL TIME (COMM.)
06.35	PERSONAL PAID ANNOUNCEMENT
06.40	URHOB MUSIC
06.45	EDO MAGAZINE
06.50	NEWS IN BRIEF (State)
06.55	THE PLEASURE IS MINE
07.00	IGBO MUSIC
07.05	EZON MAGAZINE
07.10	NEWS IN BRIEF (State)
07.15	MID-DAY MELODIES (COMM.)
07.20	MERRY GO ROUND (COMM.)
07.25	NEWS IN BRIEF (State)
07.30	MERRY GO ROUND (COMM.)
07.35	HOME MADE SOUND (COMM.)
07.40	PERSONAL PAID ANNOUNCEMENT
07.45	STATE NEWS IN ENGLISH, EDO & IGBO
07.50	TEMPOS IN HIGHLIFE (COMM.)
07.55	STATE NEWS IN ENGLISH, EZON & ISOKO
08.00	CONGO WAY (COMM.)
08.05	PERSONAL PAID ANNOUNCEMENT
08.10	EDO/ESAN REQUEST (COMM.)
08.15	BUSINESS WORLD
08.20	ANNOUNCER'S CHOICE
08.25	STATE NEWS IN ENGLISH, ITSEKIRI & URHOB
08.30	EKHA RAVBO DIOTO (URHOB 1/4 Hr. MAGAZINE)
08.35	SHORT STORY IN DIALECT (ISOKO/EZON)
08.40	INTERLUDE
08.45	EVENING WORSHIP (EDO)
08.50	AKUGBE
08.55	THOUGHT FOR THE DAY
09.00	ANNOUNCER'S CHOICE
09.05	YOUTH CARNAVAL (RPT. SAT. 11.30 HRS.)
09.10	MESSAGE OF ALLAH
09.15	JAZZ CLUB
09.20	NEWS AT MIDNIGHT (State)
09.25	CLOSING ANNOUNCEMENT
09.30	NATIONAL PLEDGE/ANTHEM

RADIO BENDEL

PROGRAMME SCHEDULE

773KHz - 388 metres
4.932MHz - 60 metres

0530 - 0005 hrs

WEDNESDAYS:

05.30	DRUM SIGNAL
05.33	STATION ANNOUNCEMENT
05.33.30	NATIONAL ANTHEM
05.34	NATIONAL PLEDGE
05.34.30	FREQUENCY ANNOUNCEMENT
05.35	PROGRAMME SUMMARY
05.40	FAMILY PRAYERS
05.50	READING FROM THE HOLY QURAN
06.00	NEWS AT DAWN (STATE)
06.05	THOUGHT FOR THE DAY
06.10	TODAY'S SHOW (COMM.)
06.14	THOUGHT FOR THE DAY
07.10	NIGERIAN BEATS (COMM.)
08.00	FOR YOU AT HOME (COMM.)
08.45	LIGHT MUSIC FROM THE NETHERLAND
09.00	OKFAMER/OSOSO REQUEST (COMM.)
09.55	PERSONAL PAID ANNOUNCEMENT
10.00	ITSEKIRI MUSIC
10.30	CHORAL ECHOES
11.00	NEWS IN BRIEF (State)
11.03	SHOPPING GUIDE
11.30	AKUGBE
12.00	NEWS IN BRIEF (State)
12.03	MID-DAY MELODIES (COMM.)
13.15	MERRY GO ROUND (COMM.)
14.00	NEWS IN BRIEF (State)
14.03	MERRY GO ROUND (COMM.)
15.00	HOME MADE SOUNDS (COMM.)
15.20	PERSONAL PAID ANNOUNCEMENT
15.30	STATE NEWS IN ENGLISH, EDO & IGBO
16.10	INTERLUDE/JINGLES
16.15	OUR SPORTING REPORT
16.30	THE PLEASURE IS MINE
16.45	TUNES FROM BOWO
17.00	STATE NEWS IN ENGLISH, EZON & ISOKO
17.30	IGBO/DKA REQUEST (COMM.)
18.00	PERSONAL PAID ANNOUNCEMENT
18.10	HIGHLIFE TIME (Music Dept.) (COMM.)
18.45	TOWARDS BETTER FARMING (RPT. FROM SUN)
19.30	YOU AND THE ARTS (RPT. 08.45 HRS.)
19.45	MUSIC BREAK (DCA)
20.00	STATE NEWS IN ENGLISH, ITSEKIRI & URHOBO
20.30	AJA MO KIN AGHAN (Itsekiri Mhr. Magazine)
21.00	SHORT STORY IN DIALECT (Itsekiri/Urho)
21.15	EVENING WORSHIP
21.30	FEATURES (RPT. FROM SUNDAY 15.30)
22.10	THOUGHT FOR THE DAY (RPT. FROM 06.05)
22.13	ANNOUNCER'S CHOICE
22.30	MUSIC OF OUR STATE
23.00	MESSAGE OF ALLAH
23.10	MAGIC MOMENT

00.00	NEWS AT MIDNIGHT (State)
00.05	CLOSING ANNOUNCEMENT
00.05.30	NATIONAL/PLEDGE/ANTHEM

THURSDAYS:

05.30	DRUM SIGNAL
05.33	STATION ANNOUNCEMENT
05.33.30	NATIONAL ANTHEM
05.34	NATIONAL PLEDGE
05.34.30	FREQUENCY ANNOUNCEMENT
05.35	PROGRAMME SUMMARY
05.40	FAMILY PRAYERS
05.50	READING FROM THE HOLY QURAN
06.00	NEWS AT DAWN (State)
06.05	THOUGHT FOR THE DAY
06.10	YOURS FOR THE ASKING (COMM.)
06.56	THOUGHT FOR THE DAY
07.00	NIGERIAN BEATS (COMM.)
08.00	EZON/ITSEKIRI REQUEST (COMM.)

08.45	MY TASTE IN MUSIC
09.00	JUJU MUSIC (COMM.)
09.55	PERSONAL PAID ANNOUNCEMENT
10.00	MY TASTE IN MUSIC (DCA)
10.15	HOSPITAL REQUEST
11.00	NEWS IN BRIEF (State)
11.03	ESAN MUSIC
11.30	URHOBO MAGAZINE
12.00	NEWS IN BRIEF (State)
12.03	MID-DAY MELODIES (COMM.)
13.13	MERRY GO ROUND (COMM.)
14.00	NEWS IN BRIEF (State)
14.03	MERRY GO ROUND (COMM.)
15.00	HOME MADE SOUNDS (COMM.)
15.20	PERSONAL PAID ANNOUNCEMENT
15.30	STATE NEWS IN ENGLISH EDO & IGBO
16.10	A LOOK AT LIFE (RPT. FROM SUN. 13.10HRS.)
16.15	CHILDREN'S WORLD (RPT. SUN. 13.30)
16.30	MIXED MUSIC

RECORD REQUEST COUPON

Cut this Coupon and mail to The Producer

.....
(title of appropriate programme)
.....
(Name of FRCN/Station)
.....
Please play
.....
By.....
.....
For (Name and Address).....
.....
Date Required.....
.....
Occasion.....
.....
Sender (Name and Address).....
.....

RADIO BENDEL

PROGRAMME SCHEDULE

773KHz - 388 metres
4.932MHz - 60 metres

0530 - 0005 hrs

17.00	STATE NEWS IN ENGLISH, EZON & ISOKO	15.30	STATE NEWS IN ENGLISH, EDO & IGBO	06.03	THOUGHT FOR THE DAY
17.30	ETSAKO/OWAN REQUEST (COMM.)	16.10	TALKING SPORTS	06.05	WEEKEND SPECIAL (COMM.)
18.00	PERSONAL PAID ANNOUNCEMENT	16.15	VIEW POINT	06.56	THOUGHT FOR THE DAY
18.10	HOME MAKERS SPECIAL (COMM.)	16.45	MUSIC INTERLUDE	07.10	WEEKEND SPECIAL (COMM.)
19.30	MEET THE ARTIST	17.00	STATE NEWS IN ENGLISH, EZON & ISOKO	08.00	DROP US A LINE
19.45	MUSIC BREAK (DCA)	17.30	MAKE WE COME TOGEDER (COMM.)	08.50	YOU AND THE ARTS (RPT. FROM WED. 19.30HRS).
20.00	STATE NEWS IN ENGLISH, ITSEKIRI & URHOB	18.00	PERSONAL PAID ANNOUNCEMENT	08.45	SOUL BREAK
20.30	THIS WEEK'S GUEST/ PEOPLES VIEWS (FROM MON. 16.15 HRS.)	18.10	URHOB/ISOKO REQUEST (COMM.)	09.15	PORTRAIT OF THE PAST
20.45	ADVENTURES OF PA OGBEMI - ALIAS CHOP CHOP (Rpt. from FH. 26.30 hrs.)	19.30	BUSINESS WORLD (RPT. FROM TUE. 19.30)	09.30	ADVENTURES OF PA OGBEMI - ALIAS CHOP CHOP
21.00	MEDITATION	19.45	THE CHOICE IS MINE (DCA)	09.45	PERSONAL PAID ANNOUNCEMENT
21.00	SHORT STORY IN DIALECT	20.00	STATE NEWS IN ENGLISH, ITSEKIRI & URHOB	10.00	MY TASTE IN MUSIC (DCA)
21.15	EVENING WORSHIP	20.30	ADVENTURES OF PA OGBEMI ALIAS CHOP CHOP	10.15	CAN YOU GUESS (RPT. FROM THUR. 22.30)
21.30	NNOKO ANYI (Ibo 1/2hr. Magazine)	20.45	CHRISTIAN COMMENT	10.45	INTERLUDE
22.10	THOUGHT FOR THE DAY	21.00	SHORT STORY IN DIALECT (ETSAKO/AKOKO EDO)	11.00	NEWS IN BRIEF (State)
22.15	ANNOUNCER'S CHOICE	21.15	EVENING WORSHIP	11.03	JUNIOR REQUEST
22.30	CAN YOU GUESS (RPT. SAT. 10.15 a.m.)	21.30	EZON OTU ADO E (1/2hr. Esan Magazine)	11.30	YOUTH CARNIVAL (V. & L.E.)
23.00	MESSAGE OF ALLAH	22.10	THOUGHT FOR THE DAY	12.00	NEWS IN BRIEF (State)
23.10	MAGIC MOMENT	22.15	ANNOUNCER'S CHOICE	12.03	GLOBAL SOUND (COMM.)
00.00	NEWS AT MIDNIGHT (State)	22.30	OUR FESTIVAL	13.15	TEMPOS IN HIGHLIFE (COMM.)
00.05	CLOSING ANNOUNCEMENT	23.00	ISLAM AND YOU	14.00	NEWS IN BRIEF (State)
00.05.30	NATIONAL PLEDGE/ ANTHEM	23.10	MAGIC MOMENTS	14.03	TEMPOS IN HIGHLIFE (COMM.)
		00.00	NEWS AT MIDNIGHT (State)	15.10	PERSONAL PAID ANNOUNCEMENT (P.P.A.)
		00.05	CLOSING ANNOUNCEMENT	15.30	STATE NEWS IN ENGLISH, EDO, IGBO & EZON
		00.05.30	NATIONAL PLEDGE/ ANTHEM	16.10	ANNOUNCER'S CHOICE/ JINGLES
				16.30	SPORTS PAVILLION
				18.45	HERITAGE
				19.10	I SALUTE UNA (COMM.)
				20.00	STATE NEWS IN ENGLISH, ISOKO, ITSEKIRI & URHOB
				20.30	I SALUTE UNA
				21.00	IRHUERU OTORIA (1/2hr. Iako Magazine)
				21.30	MIXED MUSIC (Music Dept.)
				22.10	THOUGHT FOR THE DAY
				22.15	EVENING WORSHIP
				22.30	A DATE WITH AN ARTIST
				23.00	SATURDAY DISCOTHEQUE
				00.00	NEWS AT MIDNIGHT (State)
				00.05	CLOSING ANNOUNCEMENT
				00.05.30	NATIONAL PLEDGE/ ANTHEM

FRIDAYS:

05.30	DRUM SIGNAL
05.33	STATION ANNOUNCEMENT
05.33.30	NATIONAL ANTHEM
05.34	NATIONAL PLEDGE
05.34.30	FREQUENCY ANNOUNCEMENT
05.35	PROGRAMME SUMMARY
05.40	FAMILY PRAYERS
05.50	READING FROM THE HOLY QURAN
06.00	NEWS AT DAWN (State)
06.05	THOUGHT FOR THE DAY
06.10	TODAY'S SHOW (COMM.)
06.56	THOUGHT FOR THE DAY
07.00	NIGERIAN BEATS (COMM.)
08.00	LIGHT INSTRUMENTAL MUSIC
08.15	WOMEN'S CORNER (RPT. SUNDAY @ 08.30)
08.45	THE CHOICE IS MINE
09.10	THE BEAT IS BLACK (COMM.)
09.55	PERSONAL PAID ANNOUNCEMENT
10.00	ISOKO MUSIC (COMM.)
10.30	ITSEKIRI MAGAZINE
11.30	NEWS IN BRIEF (State)
11.05	MY TASTE IN MUSIC
11.15	MEET THE ARTIST
11.30	IGBO MAGAZINE
12.00	NEWS IN BRIEF (State)
12.03	MID-DAY MELODIES (COMM.)
13.15	JUMAT SERVICE
14.00	NEWS IN BRIEF
14.05	MERRY GO ROUND (COMM.)
15.00	HOME MADE SOUNDS (COMM.)
15.20	PERSONAL PAID ANNOUNCEMENT

SATURDAYS:

05.30	DRUM SIGNAL
05.33	STATION ANNOUNCEMENT
05.33.30	NATIONAL ANTHEM
05.34	NATIONAL PLEDGE
05.34.30	FREQUENCY ANNOUNCEMENT
05.35	PROGRAMME SUMMARY
05.40	FAMILY PRAYERS
05.50	READING FROM THE HOLY QURAN
06.00	NEWS AT DAWN (State)
06.00	NEWS AT DAWN (State)
20.30	DRUM SIGNAL
21.00	STATION ANNOUNCEMENT
21.30	NATIONAL ANTHEM
22.10	NATIONAL PLEDGE
22.15	FREQUENCY ANNOUNCEMENT
22.30	PROGRAMME SUMMARY
23.00	FAMILY PRAYERS
00.00	READING FROM THE HOLY QURAN
00.05.30	NATIONAL PLEDGE/ ANTHEM

Subscription Form

Please send me Radio-TV Times for one year beginning with the month of _____ 19____
I enclose a Postal Order for ₦2.40

Name

Address

RADIO BORNO

PROGRAMME SCHEDULE

1387KHz - 215 metres
8.100MHz - 49 metres

0630 - 0900 hrs

SUNDAYS:

0630 STATION CALL SIGNAL
0633 NATIONAL ANTHEM, PLEDGE AND OPENING ANNOUNCEMENT
0633 READING FROM THE HOLY KORAN
0640 PROGRAMME PARADE IN ENGLISH AND HAUSA
0600 NEWS AT DAWN
0803 MOMENT FOR THOUGHT
0806 LAKE TO LAGOS - A Programme of Mixed Music
0700 THE NEWS
0710 THE CRITIC
0715 LET'S WORSHIP
0800 MY KIND OF MUSIC
0815 DAGA MASU AURARONMU (Rpt. From Thursday 1615 Hrs)
0845 ANNOUNCER'S CHOICE
0900 MUNA KWARYA - A Breakfast Time Request - Programme in Hausa
1000+ SUNDAY SPECIAL - A Request Programme in English
1100 KUTTUNEM GULLE (Rpt. From Friday 1915)
1130 MUZAGA MUGA NI - A Feature Programme in Hausa
1200 MIXED MUSIC IN RECORDS
1230 KU MATSO YARA - Children's Programme in Hausa (Rpt. Friday 1315 Hrs)
1300 THE NEWS
1310 FROM THE NIGERIAN EDITORIALS
1315 FULEI KARNE - Request Programme in Kanuri
1400 ACROSS THE NATION (COMM) ALWUSHIF (Rpt. From Friday 1530 Hrs)
1530 ANSOSHIN TAMBAYOYIN ADDININ KRISTA (Rpt. Saturday 0730 Hrs)
1815 (COMM) MUSIC OF OUR NEIGHBOURS
1845 SHORT STORIES
1700 ANNOUNCER'S CHOICE
1715 SPORT REVIEW
1730 PLEASE EXPLAIN /N.Y.S.C. Forum (Rpt. Tuesday 1900 Hrs)
1800 HOSPITAL REQUEST in Hausa
1900 EVENING FIESTA - Mixed Music on Records
1945 NILEFA KILI - Health is Wealth in Kanuri (Rpt. Wednesday 1345 Hrs)
2000 INTERLUDE
2015 FATAWA by MOHAMMED SA'ADU (Rpt. Thursday 1730 Hrs)

2045 BORNO STATE CALLING - A Borno State Government Sponsored Programme (Rpt. Monday 0745 Hrs)
2210 THE NEWS
2210 INTERLUDE
2230 (COMM) MUSIC FOR ROYALTY
2300 MU KWANA LAFIA - A Request Programme in Hausa
2345 READING FROM THE HOLY KORAN
0000 NEWS AT MIDNIGHT
0005 CLOSE DOWN

MONDAY

0530 STATION CALL SIGNAL
0633 NATIONAL ANTHEM PLEDGE AND OPENING ANNOUNCEMENT
0634 READING FROM THE HOLY KORAN
0649 PROGRAMME PARADE IN ENGLISH AND HAUSA
0800 NEWS AT DAWN
0803 MOMENT FOR THOUGHT
0805 FROM THE NIGERIA EDITORIALS
0810 BARKA DA ASUBA
0845 STATE NEWS SUMMARY
0850 INTERLUDE
0700 THE NEWS
0710 NEWS ANALYSIS
0715 BABIN MATA: A House Wives Special Programme in Hausa (Rpt. Friday 1615)
0745 BORNO STATE CALLING : A Borno State Sponsored Programme (Rpt. From Sunday 2045) Hrs
0800 NEWS SUMMARY in Fulfulde, Hausa and Kanuri
0815 MAKADIN SAFE
0845 TATSUNIYA (Folk Tale in Hausa (Rpt. Monday Friday (1945) Hrs)
0900 MUNA KWARYA - A Breakfast Time Request - Programme in Hausa
1000 LAFIYA UWAR JIKI - (Rpt. Tuesday 1815 Hrs)
1015 ALGIETA MUSIC
1045 TITTIMI (Folk Tale in Kanuri (Rpt. from Wed 1945 Hrs)
1100 UWAR GIDA KUNNENKI NAWA - (Rpt on Wednesday 2215) Hrs
1145 ANNOUNCER'S CHOICE
1200 TAHIRIN ANNABI
1230 FILIN MANOMA - For Farmers (Rpt. From Saturday (1315) Hrs)
1300 THE NEWS
1310 FROM THE NIGERIA EDITORIALS

1415 TADA'A LALEVO (Rpt. from Saturday 1400 Hrs)
1345 SHORT STORIES (Rpt. from Sunday 1845 Hrs)
1400 MUSIC WHILE YOU WORK (COMM) MUSIC FROM OTHER STATES
1630 STATE NEWS IN ENGLISH
1640 P.P.A./INTERLUDE
1600 NETWORKNEWS
1810 A DISC FOR YOU
1818 NGAM ROBE TEGAL: - A House Special in Fulfulde (Rpt. Wed. 1000 Hrs)
1845 MUSIC BREAK
1700 STATE NEWS IN Fulfulde, Hausa and Kanuri
1730 BARKA DA YAMMA - A Programme of Indigenous Music
1800 YOUTH FORUM - A Variety Programme for the Young and Young at Heart (Rpt Wednesday 1430 Hrs)
1830 (COMM) TASHI TAKA
1855 EVENING PRAYERS
1900 AN HOUR WITH WILLIE - A Programme of Music and Chit Chat
2000 STATE NEWS IN English and Fulfulde
2020 P.P.A./INTERLUDE
2030 STATE NEWS IN Hausa and Kanuri
2050 P.P.A./INTERLUDE
2100 LOKACIN HIRA in Fulfulde (Rpt. Wed. 2130 hrs)
2130 MUKOYI ADDINI IN KANURI: A Programme in Islamic Religion
2200 THE NEWS
2210 NEWS ANALYSIS
2215 FULEI KARNE - A Request Programme in - Kanuri
2300 SAIDA SAFE:
2345 READING FROM THE HOLY KORAN
0000 NEWS AT MIDNIGHT
0005 CLOSE DOWN

TUESDAY

0530 STATION CALL SIGNAL
0633 NATIONAL ANTHEM PLEDGE AND OPENING ANNOUNCEMENT
0634 READING FROM THE HOLY KORAN
0649 PROGRAMME PARADE IN ENGLISH AND HAUSA
0800 NEWS AT DAWN
0803 MOMENT FOR THOUGHT

RADIO BORNO

PROGRAMME SCHEDULE

1397KHz - 215 metres
6.100MHz - 48 metres

0630 - 0000 hrs

0605	FROM THE NIGERIAN EDITORIALS	2050	P. P. A MUSIC BREAK	1300	THE "NEWS"
0610	INA KWANA - A Programme of Music in Disc	2100	TOMORROW ON RADIO BORNO	1310	FROM THE NIGERIAN EDITORIALS
0630	DAGA BAKIN JAMA (Rpt from Saturday 1430 hrs)	2110	MIXED MUSIC	1315	(COMM) BARKA DA RAIJA
0645	STATE NEWS IN BRIEF	2130	KANURI HALF HOUR (A Magazine Programme in Kanuri (Rpt. Wednesday 0715 Hrs))	1345	NILEFA KIJI (Rpt from Sunday 1645 Hrs)
0650	INTERLUDE	2200	THE NEWS	1400	BARKA DA RANA
0700	THE NEWS	2210	NEWS ANALYSIS	1430	YOUTH FORUM (Rpt. from Monday 1800 Hrs)
0710	NEWS ANALYSIS	2215	SPORTS REVIEW (Rpt. from Sunday 1715 Hrs)	1500	TOMORROW ON RADIO BORNO
0715	MAIDUGURI EXPRESS - A Programme of Music and Chit Chat	2230	(COMM) JANTU MUSIC	1510	MIXED MUSIC ON RECORDS
0800	NEWS SUMMARY in Fulfulde Hausa and Kanuri	2230	MU KWANA LAFIYA - A Late Night Request Programme in Hausa	1530	STATE NEWS IN ENGLISH
0815	RETA SA'A FULBE - (Rpt from Saturday 1015 Hrs)	2345	READING FROM THE HOLY KORAN	1640	P. P. A. INTERLUDE
0845	MUSIC BREAK	0000	NEWS AT MIDNIGHT	1600	THE NEWS
0800	DON IYALENKU - A Family Favourite Request Programme in Hausa	0005	CLOSE DOWN	1600	A DISC FOR YOU
1000	(COMM) KUKUMA MUSIC			1615	YA KAMUASO - House Wives Special - Programme in Kanuri (Rpt. Friday 0815 Hrs)
1030	WURO SUMONNEN - A Drama Programme in Kanuri (Rpt. Saturday 1815 Hrs)		WEDNESDAYS:	1645	INTERLUDE
1100	JERIN MAKASAN NIGERIAN - A Cavalcade of Nigerian Music in Hausa	0530	STATION CALL SIGNAL	1700	STATE NEWS IN FULFULDE, HAUSA AND KANURI
1200	MUSIC OF OUR STATE	0533	NATIONAL ANTHEM PLEDGE AND OPENING ANNOUNCEMENT	1730	MIDWEEK MEDITATION
1230	KORO ADDINIBE (Rpt From Friday 1430 Hrs)	0534	READING FROM THE HOLY KORAN	1800	MIXED MUSIC ON RECORDS
1310	EDITORIALS	0549	PROGRAMME PARADE IN ENGLISH AND HAUSA	1830	TASHI TAKA
1315	KOYITAYIRO - SALAI - A Request Programme in Kanuri	0600	NEWS AT DAWN	1855	EVENING PRAYERS
1400	TIME ON MY HAND - A Programme of Mixed Music	0603	MOMENT FOR THOUGHT	1900	MIDWEEK SHOW
1500	BORNO STATE LAN: (Borno State Calling in Kanuri (Rpt. Sat. 1445 hrs))	0608	FROM THE NIGERIAN EDITORIALS	1945	TITTIMI (Folk Tale in Kanuri)
1515	MIXED MUSIC	0610	INTERLUDE	2000	STATE NEWS IN ENGLISH AND FULFULDE
1530	STATE NEWS IN ENGLISH	0615	MU ZAGA MU GANI (Rpt from Sunday Hrs)	2020	P. P. A. /MUSIC BREAK
1540 (COMM)	P. P. A.	0645	STATE NEWS IN BRIEF	2030	STATE NEWS IN HAUSA AND KANURI
1600	THE NEWS	0650	INTERLUDE	2055	P. P. A. MUSIC BREAK
1610	A DISC FOR YOU	0700	THE NEWS	2100	LOKACIN HIRA IN FULFULDE (Rpt. from Monday 2100 Hrs)
1615	DATELINE MAIDUGURI (Rpt. from Saturday, 1130 Hrs)	0715	NEWS ANALYSIS	2130	HEALTH IS WEALTH (Rpt. from Thursday 1500)
1645	ANNOUNCER'S CHOICE	0745	INTERLUDE	2145	TABA KA LASHE: ipge asus Music
1700	STATE NEWS IN Fulfulde, Hausa and Kanuri	0800	NEWS SUMMARY in Fulfulde, Hausa and Kanuri	2200	THE NEWS
1730	FULEI KARNE - A Request Programme in Kanuri	0815	KAWA ZUWA KAWA - A Family Favourite Request Programme in Hausa	2210	NEWS ANALYSIS
1815	LAFIYA UWAR JIKI (Rpt. from Monday 1000 Hrs)	0900	INTERLUDE	2215	UWAR GIDA KUNNENKI NAWA (Rpt from Monday 1100 Hrs)
1830	TASHI TAKA	0915	MBISMILLAWO - A Breakfast Time Request - Programme in Kanuri	2300	MU KWANA LAFIYA - A Late Night Request Programme
1855	EVENING PRAYERS	1000	NGAM ROBE TEGAL - House Wives special - Programme in Fulfulde (Rpt. from Monday 1815 Hrs)	2345	READING FROM THE HOLY KORAN
1900	PLEASE EXPLAIN/N Y S C FORUM (Rpt. From Sunday: (1730 Hrs))	1030	MID-MORNING MELODIES	0000	NEWS AT MIDNIGHT
1930	MUSIC TILL EIGHT	1100	DAGA TASKARMU FROM OUR LIBRARY	0005	CLOSE DOWN
1945	STATE NEWS IN ENGLISH AND FULFULDE	1200	MUSIC OF OUR STATE		
1950	P. P. A /MUSIC BREAK	1230	(COMM) KIDAN GARGAJIYA		
2000	STATE NEWS IN HAUSA AND KANURI				
					THURSDAYS:
				0530	STATION CALL SIGNAL
				0533	NATIONAL ANTHEM, PLEDGE AND OPENING ANNOUNCEMENT
				0534	READING FROM THE HOLY KORAN
				0540	PROGRAMME PARADE IN ENGLISH AND HAUSA
				0600	NEWS AT DAWN
				0605	MOMENT FOR THOUGHT
				0610	INA KWANA - A Programme of Chit-Chat

RADIO BORNO

PROGRAMME SCHEDULE

1397KHz - 215 metres
6.100MHz - 49 metres

0530 - 0005 hrs

0645 STATE NEWS IN BRIEF
0650 INTERLUDE
0700 THE NEWS
0710 NEWS ANALYSIS
0715 INDA WATTUNDO - A Request Programme in Kanuri
0800 NEWS SUMMARY IN Fulfulde, Hausa and Kanuri
0815 CHUBOL - A Breakfast Time Request Programme in Hausa
0900 INTERLUDE
0915 MUNA KWARYA BY HANSATU AZARE
1000 JUKE BOX Mixed Music
1100 INDIAN MUSIC
1130 KADE-KADEN MU
1200 BARKA DA AIKI
1230 (COMM) BARKA DA RANA
1300 THE NEWS
1315 KU KOYI ADDININ MUSULIC IN KANURI (Rpt. from Monday 2130 Hrs)
1345 MUSIC WHILE YOU WORK
1445 JIHAR BORNO KE MAGANA (Rpt. on Wednesday 0735 Hrs)
1500 (COMM) ZAKIN MAKADA
1530 STATE NEWS IN ENGLISH
1540 (COMM) P. P. A./INTERLUDE
1600 THE NEWS
1610 A DISC FOR YOU
1615 DAGA MASU SAURAROM - A Programme of Listeners' Letters in Hausa
1645 MY KIND OF MUSIC
1700 STATE NEWS IN Fulfulde, Hausa and Kanuri
1730 FATAWA BY MOHAMMED SA'ADU (Rpt. From Monday 2115 Hrs)
1800 ZABEN ALMURU - Evening Request Programme in Hausa
1845 EVENING PRAYERS
1900 KULORO WALTIYO - Special Programme for Farmers in Kanuri
1915 TOMORROW ON RADIO BORNO
1930 POLICE INFORMATION (Rpt. on Sunday 0845 Hrs)
1945 ANNOUNCER'S CHOICE
2000 STATE NEWS IN ENGLISH AND FULFULDE
2020 P. P. A. /MUSIC BREAK
2030 STATE NEWS IN HAUSA AND KANURI
2060 P. P. A. /MUSIC BREAK
2100 MIXED GRILL
2130 WASAN MU NA MAKO - Play of the Week in Hausa (Rpt. on Saturday 0815 Hrs)
2200 THE NEWS
2210 NEWS ANALYSIS
2215 ANNOUNCER'S CHOICE
2230 TAHIRIN ANNABI (Rpt from Monday 1200 Hrs)
2300 FAJARRA - A Late Night Request Programme in Kanuri

2345 READING FROM THE HOLY KORAN
0000 NEWS AT MIDNIGHT
0005 CLOSE DAWN

FRIDAYS:

0530 STATION CALL SIGNAL
0533 NATIONAL ANTHEM, PLEDGE AND OPENING ANNOUNCEMENT
0534 READING FROM THE HOLY KORAN
0539 PROGRAMME PARADE IN ENGLISH AND HAUSA
0600 NEWS AT DAWN
0603 FROM THE NIGERIAN EDITORIALS
0608 INTERLUDE
0615 MOSLEM SERMON (Rpt. from Friday 1230 Hrs)
0845 STATE NEWS IN BRIEF
0750 SHORT AND SWEET
0657 MOMENT FOR THOUGHT
0700 THE NEWS
0710 NEWS ANALYSIS
0715 BARKA DA JUMA'A - A Programme of Music and Chit-Chat in Hausa
0900 NEWS SUMMARY in Fulfulde, Hausa and Kanuri
0815 YA KAMUASO - Magazine Programme in Kanuri (Rpt. from Wednesday 1615 Hrs)
0845 ANNOUNCER'S CHOICE
0900 MUNA KWARYA - A Breakfast Time Request Programme in Hausa
1000 (COMM) WRITTEN SONGS
1030 KADE-KADEN SUDAN
1100 FULEI KARNE - A Request Programme in Kanuri
1200 (COMM) MUSLIM RELIGIOUS SONGS
1220 MOSLEM SERMON: (Rpt Friday 0615 Hrs)
13.00 THE WORLD NEWS
13.10 FROM THE NIGERIAN EDITORIALS
1315 KU MATSO YARA (Rpt from Sunday Programme
1345 BARKA DA RANA
1430 ALWUSHIR - A Programme of News and Events in Kanuri
1500 KORO ADDINIBE - A Programme of Questions and Answers on Islam in Kanuri (Rpt. from Tuesday 1230 Hrs)
1530 STATE NEWS IN ENGLISH
1545 P. P. A. /Music Break
1600 THE NEWS
1600 A DISC FOR YOU
1615 BABIN MATA - A Programme for House Wives in Hausa

1645 MUSIC BREAK
1700 STATE NEWS IN FULFULDE, HAUSA AND KANURI
1730 EVENING REQUEST
1815 ISHIRINIYA
1845 INTERLUDE
1855 EVENING PRAYERS
1900 ANNOUNCER'S CHOICE
1915 KUTTUNEN GULLE (Rpt. From Sunday 1100 Hrs)
1945 FOLK TALE IN HAUSA (Rpt. from Monday 0845 Hrs)
2000 STATE NEWS IN ENGLISH AND FULFULDE
2020 P. P. A. /Music Break
2030 STATE NEWS IN HAUSA AND KANURI
2050 P. P. A. /Music Break
2100 ZABEN DAREN JUMA'A - A Request Programme in Hausa
2200 THE NEWS
2210 NEWS ANALYSIS
2230 (COMM) MUSIC OF ROYALTY
2300 MBALLEM JAM: - A Late Night Request - Programme in Fulfulde
2345 READING FROM THE HOLY KORAN
0000 NEWS AT MIDNIGHT
0005 CLOSE DAWN

SATURDAYS:

0530 STATION CALL SIGNAL
0533 NATIONAL ANTHEM, PLEDGE AND OPENING ANNOUNCEMENT
0534 READING FROM THE HOLY KORAN
0549 PROGRAMME PARADE IN ENGLISH AND HAUSA
0600 NEWS AT DAWN
0605 FROM THE NIGERIAN EDITORIALS
0610 INTERLUDE
0615 STATE NEWS IN BRIEF
0650 INTERLUDE
0700 THE NEWS
0710 NEWS ANALYSIS
0715 INTERLUDE
0730 AMSOSHIN TAMBAYOYIN ADDININ KRISTA (Rpt. From Sunday 1530 Hrs)
0800 NEWS SUMMARY IN FULFULDE AND KANURI
0815 WASAN MU NA MAKO (Rpt From Thursday 2130 Hrs)
0845 POLICE INFORMATION BOX (Rpt. From Thursday 1930 Hrs)
0900 MUNA KWARYA - A Breakfast Time Request Programme in Hausa
0945 B. B. C. CALLING NIGERIA
1015 RETA SA'A FULBE - A Half Hour Magazine Programme for Fulfulde Listeners (Rpt. Tuesday 0815 Hrs)

RADIO BORNO

KUGHAMME SCHEDULE

1387KHz - 218 metres
6.100MHz - 48 metres

0530 - 0006 hrs

U. P. E. CAMPAIGN in Kanuri		State Calling in Kanuri (Rpt. from	2030	STATE NEWS IN HAUSA AND
CHUBOL - A Request Programme		Tuesday 1600 Hrs)		KANURI
in Fulfulde	1500	HEALTH IS HEALTH (Rpt. Wed-	2050	P. P. A. /MUSIC BREAK
DATELINE MAIDUGURI -		nesday 2130 Hrs	2100	MIXED GRILL With constant
A Programme of News Events	1515	INTERLUDE		time check Station Identification
and Reports around Borno State	1530	STATE NEWS IN ENGLISH	2130	N. Y. S. C. CALLING A Request
(Rpt. Tuesday (1615)Hrs)	1545	MUSIC BREAK P. P. A.		Programme For Members of The
SATURDAY JUMP: A Light	1600	THE NEWS.		N.Y.S.C.
Hearted Programme of Music and	1610	MUSIC ALL THE WAY		
Chit-Chat	1700	STATE NEWS IN FULFULDE,	2200	THE NEWS
THE NEWS		HAUSA AND KANURI	2210	NEWS ANALYSIS
FROM THE NIGERIAN	1730	ALGEITA MUSIC	2215	KULORO WALTUYO (Rpt. Thurs-
EDITORIALS	1800	ZABEN ALMURU - Evening		day 0845 Hrs)
FILIN MANOMA - A Programme		Request Programme in Hausa	2230	FULEI KARNE - Request
for Farmers in Hausa	1855	EVENING PRAYERS		Programme in Kanuri
(Rpt. Monday 1130 Hrs)	1900	P. P. A. /Music Break	2300	WEEK END REQUEST /
ANNOUNCER'S CHOICE	1915	WUROSUMONE - A Drama		SATURDAY NIGHTOUT - A
TADA'A LALEWO - Children's		Programme in Kanuri - (Rpt.		Late Night Request Programme in
Programme in Kanuri		from Tuesday 1030 Hrs)		English
(Rpt. Monday 1305)Hrs)	1945	ANNOUNCER'S CHOICE	2345	READING FROM THE HOLY
DAGA BAKIN JAMA'A	2000	STATE NEWS IN ENGLISH AND		KORAN
(Rpt. on Tuesday 0830 Hrs)		FULFULDE	0000	NEWS AT MIDNIGHT
BORNO STATE LAN. (Borno	2020	P. P. A. MUSIC BREAK	0005	CLOSE DOWN

JOEANIS

OFFICE MACHINE SERVICE

specialists in repairing and servicing of all types of
Office Equipments



HEAD OFFICE: 80, Nnamdi Azikiwe Street, 1st & 2nd Floor Tom Jones Hall Building,
P. O. Box 1085, Lagos. Telephone: No. 652087 & 637554 Lagos.

IKEJA BRANCH: 16, Oba Akran Avenue, Ikeja.

IBADAN BRANCH: SIW8/446C Lodge Street, Oke Ado
P. O. Box 720, Ibadan. Telephone No. 413603 Ibadan.

RADIO CROSS RIVER

PROGRAMME SCHEDULE

1397KHz - 215 metres
8.146 MHz - 49 metres

0530 - 0005 hrs

SUNDAYS:

- 06.30 DRUM SIGNAL
06.33 OPENING ANNOUNCEMENT.
05.34 NATIONAL ANTHEM/PLEDGE/SEQUENCE
06.35 FAMILY PRAYERS
05.50 PROGRAMME PARADE
06.55 A DISC FOR YOU
08.00 SENTIMENTAL TUNES ON RECORDS
06.45 ATTENTION PLEASE
07.00 NATIONAL NEWS
07.10 ORGAN MUSIC
07.15 LET'S WORSHIP
08.00 LIGHT MUSIC
08.15 LOOKING AHEAD (Rept. 17.15)
08.30 TIME AND TIDE (From Saturday 20.30)
09.00 CHORAL SINGING (From Saturday 19.30)
09.15 SUNDAY MORNING MELODIES (NO ADVERTS)
10.00 WORLD NEWS
10.10 FORCES CALL (Rept. 11.00)
11.00 TALKING POINT (From Saturday 22.30)
11.30 CITY CARAVAN (From Saturday 11.30)
12.00 SUNDAY REQUEST
13.00 WORLD NEWS
13.10 NIGERIAN TRADITIONAL MUSIC.
13.30 BEKWARA MAGAZINE (From Saturday 21.30)
14.00 ACROSS THE NATION
15.00 YOU AND THE LAW (From Wednesday 19.30)
15.15 MUSIC OF OUR STATE (From Friday 19.45)
15.30 CALABAR PLAY HOUSE (From Tuesday 21.30)
16.00 NATIONAL NEWS
16.10 INTERLUDE/PERSONAL ANNOUNCEMENTS
16.15 SCHOOLS CHALLENGE (Rept. Monday 19.30)
18.45 PRAISE THE LORD
17.00 LOOKING AHEAD (From 08.15)
17.15 EJAGHAM BALLAD (From Saturday 13.15)
17.30 MBOHO NYIN (From Saturday 14.15)
18.00 EFIK TUNES ON RECORDS
18.15 QUESTION TIME ON CRBC (From Saturday 19.45)
18.30 MOMENTS TO SHARE (From Wednesday 20.30)
19.00 NATIONAL NEWS
19.10 INTERLUDE
19.15 MBOHO IBAN (Repeat Monday 20.30)

- 10.45 PERSONAL PAID ANNOUNCEMENTS
20.00 SUNDAY CONCERT
21.00 COMMUNITY HYMN SINGING
21.30 EFIK BALLAD
21.45 ANNOUNCER'S CHOICE
22.00 NATIONAL NEWS
22.10 WEATHER NEWS/INTERLUDE
22.15 SUNDAY SERENADE
23.00 CALABAR MUSIC ROOM
23.45 EVENING WORSHIP
00.05 CLOSE DOWN

MONDAYS:

- 05.30 DRUM SIGNAL
05.33 OPENING ANNOUNCEMENT
05.34 NATIONAL ANTHEM/PLEDGE/SEQUENCE
05.35 FAMILY PRAYERS
05.50 PROGRAMME PARADE
05.55 A DISC FOR YOU
05.58 DRUM SIGNAL/JINGLE
06.00 WORLD NEWS
06.10 CROSS RIVER SUNRISE (COMM) Easy to listen to and smooth flowing music mainly Nigerian
06.45 ATTENTION PLEASE
07.00 NATIONAL NEWS
07.15 MUSIC AFRICANA (COMM) Brisk, colourful and various musical expeditions mainly African
08.00 CITY CARAVAN (From Sunday 11.30)
08.30 MUSIC FOR YOU AT HOME
08.00 MUSIC RENDEZVOUS (COMM) Music tuneful, bouncy and various non-stop
09.30 BEKWARA MAGAZINE (From Sunday 13.30)
10.00 MUSIC FOR SHOPPERS (Sweet flowing music for easy shopping)
11.00 MUSIC WHILE YOU WORK
11.58 DRUM SIGNAL/JINGLE
12.00 STATE NEWS
12.10 MIDDAY MELODIES (COMM) Music sentimental, light and cheerful with accent on melodies.
13.00 WORLD NEWS
13.10 NEWS ANALYSIS
13.15 MUSIC WHILE YOU WORK (COMM) Soft and easy to hum by those at work played non-stop
14.00 TRADITIONAL MUSIC ON RECORDS
15.00 ATTENTION PLEASE

- 15.15 REGGAE TIME
15.30 WORLD NEWS IN EFIK, BEKWARA & EJAGHAM
16.00 NATIONAL NEWS
16.10 A DISC FOR YOU
16.15 FEED THE PEOPLE (Rept. Thursday 19.45)
16.30 MOMENTS TO SHARE (Rept. Tuesday 09.30)
17.00 WOMEN'S SPECIAL
17.15 KIDDIES CORNER (Rept. Wednesday 17.00)
17.30 EFIK PLAY (Rept. Thursday 20.30)
18.00 BEKWARA REQUEST
18.58 DRUM SIGNAL/JINGLE
19.00 WORLD NEWS (STATE)
19.10 ATTENTION PLEASE/INTERLUDE
19.30 SCHOOLS CHALLENGE (From Sunday 16.15)
20.00 WORLD NEWS IN EFIK BEKWARA & EJAGHAM
20.30 MBOHO IBAN (From Sunday 19.15)
21.00 STATE SPORTS MAGAZINE (Rept. Tuesday 17.30)
21.30 BAND STAND (Rept. Tuesday 17.00)
22.00 NATIONAL NEWS
22.10 WEATHER NEWS/NEWS ANALYSIS
22.15 EFIK BALLAD (From Sunday 21.30)
22.30 MUSIC OF OUR LAND (Rept. Tuesday 08.00)
23.00 CALABAR MUSIC ROOM
23.45 EVENING WORSHIP
00.00 NEWS AT MIDNIGHT
00.05 CLOSE DOWN

TUESDAYS:

- 05.30 DRUM SIGNAL
05.33 OPENING ANNOUNCEMENT
05.34 NATIONAL ANTHEM/PLEDGE/SEQUENCE
05.35 FAMILY PRAYERS
05.50 PROGRAMME PARADE
05.55 A DISC FOR YOU
05.58 DRUM SIGNAL/JINGLE
06.00 WORLD NEWS
06.10 CROSS RIVER SUNRISE (COMM) Easy to listen to and smooth flowing music mainly Nigerian
06.45 ATTENTION PLEASE
07.00 NATIONAL NEWS
07.10 NEWS ANALYSIS
07.15 TRADITIONAL MUSIC
08.00 MBOHO NYIN (From Sunday 17.30)

RADIO CROSS RIVER

PROGRAMME SCHEDULE

1397KHz -- 215 metres
6.145 MHz -- 49 metres

0530 - 0006 hrs

- 08.30 MUSIC FOR YOU AT HOME (COMM)
Sweet and leisurely for the stay-at-home
- 09.00 MUSIC RENDEZVOUS (COMM)
Music tuneful, bouncy and various
- 09.30 MOMENTS TO SHARE (From Monday 16.30)
- 10.00 MUSIC FOR SHOPPERS (Sweet and flowing music for easy shopping)
- 11.00 MUSIC WHILE YOU WORK
- 11.58 DRUM SIGNAL/JINGLE
- 12.00 STATE NEWS
- 12.10 MIDDAY MELODIES (COMM) Music sentimental, light and with accent on melodies
- 13.00 WORLD NEWS
- 13.10 NEWS ANALYSIS
- 13.15 TUESDAY AT 1.15
- 14.00 LISTENER'S CHOICE
- 15.00 ATTENTION PLEASE
- 15.15 MUSIC FROM OTHER STATES ON RECORDS (COMM)
- 15.30 WORLD NEWS IN EFIK, BEKWARA & EJAGHAM
- 16.00 NATIONAL NEWS
- 16.10 A DISC FOR YOU
- 16.15 KIDDIES REQUEST TIME (ENGLISH)
- 17.00 BAND STAND (Rept. Thursday 16.30)
- 17.30 STATE SPORTS MAGAZINE (From Monday 21.00)
- 18.00 EKOM DO (COMM)
- 18.58 DRUM SIGNAL/JINGLE
- 19.00 WORLD NEWS IN ENGLISH
- 19.10 ATTENTION PLEASE
- 19.30 EKONG NKE (Rept. Friday 19.30)
- 19.45 THE RADIO DOCTOR (Rept. Friday 16.45)
- 20.00 WORLD NEWS IN EFIK, BEKWARA & EJAGHAM
- 20.30 MATTERS OF THE MOMENT (Rept. Wed. 08.00)
A programme of actuality report and commentaries on the week's events from all parts of the CRS
- 21.00 RIWU ENYINYE TENN (Rept. Wednesday 17.30)
- 21.30 CALABAR PLAY HOUSE (Rept. Sunday 15.30)
- 22.00 NATIONAL NEWS
- 22.10 WEATHER NEWS/NEWS ANALYSIS
- 22.15 ANNOUNCER'S CHOICE
- 22.30 TWENTY QUESTIONS (Rept. Thursday 21.00)

- 23.00 CALABAR MUSIC ROOM
Sweet and soft tunes for those awake and listening
- 23.45 EVENING WORSHIP
- 00.00 NEWS AT MIDNIGHT
- 00.05 CLOSE DOWN

WEDNESDAYS:

- 05.30 DRUM SIGNAL
- 05.33 OPENING ANNOUNCEMENT
- 05.34 NATIONAL ANTHEM/PLEDGE/SEQUENCE
- 05.35 FAMILY PRAYERS
- 05.50 PROGRAMME PARADE
- 05.55 A DISC FOR YOU
- 05.58 DRUM SIGNAL/JINGLE
- 06.00 WORLD NEWS AT DAWN
- 06.10 CROSS RIVER SUNRISE (COMM) Easy to listen to and smooth flowing music and mainly Nigerian
- 06.45 ATTENTION PLEASE
- 07.00 NATIONAL NEWS
- 07.10 NEWS ANALYSIS
- 07.15 MIDWEEK REQUEST
- 08.00 MATTERS OF THE MOMENT (Rept. Fri. 17.30)
- 08.30 MUSIC FOR YOU AT HOME (COMM) Sweet and leisurely for the stay-at-home
- 09.00 MUSIC RENDEZVOUS (COMM) Music tuneful, bouncy and various
- 10.00 MUSIC FOR SHOPPERS
Sweet flowing music for easy shopping
- 11.00 MUSIC WHILE YOU WORK
- 11.58 DRUM SIGNAL/JINGLE
- 12.00 STATE NEWS
- 12.10 MIDDAY MELODIES (COMM) Music sentimental, light and cheerful with accent
- 13.00 WORLD NEWS
- 13.10 FROM THE NIGERIAN EDITORIALS
- 13.15 MUSIC FOR YOUR DELIGHT (COMM) Played nonstop for afternoon relaxation
- 14.00 TRADERS' SPECIAL (COMM) A special request programme for all those engaged in any form of trading.
- 15.00 ATTENTION PLEASE
- 15.15 REGGAE TUNES ON RECORDS
- 15.30 WORLD NEWS IN EFIK, BEKWARA & EJAGHAM
- 16.00 NATIONAL NEWS
- 16.10 A DISC FOR YOU
- 16.15 FEMININE WORLD (Rept. Thursday 21.30)

- 16.45 ANNOUNCER'S CHOICE
- 17.00 KIDDIES CORNER (From Monday 17.15)
- 17.15 OUR MUSICAL CULTURE (Rept. Thursday 19.30)
- 17.30 RIWU ENYINYE TENN (From Tues. 21.00)
- 18.00 EKOM DO
- 19.00 WORLD NEWS IN ENGLISH
- 19.10 ATTENTION PLEASE
- 19.30 YOU AND THE LAW (Rept. Sunday 15.00)
- 19.45 MEET THE CRBC CHOIR (Rept. Saturday 10.45)
- 20.00 WORLD NEWS IN EFIK, BEKWARA & EJAGHAM
- 20.30 MOMENTS TO SHARE (Rept. Sunday 18.30)
- 21.00 EKUME ANAKAE (Rept. Friday 16.15)
- 21.30 FEATURE: FOCUS ON DEVELOPMENT (Rept. Sat. 13.30)
- 22.00 NATIONAL NEWS
- 22.10 WEATHER NEWS/NEWS ANALYSIS
- 22.15 ANNOUNCER'S CHOICE
- 22.30 EFIK PLAY (From Monday 17.30)
- 23.00 CALABAR MUSIC ROOM
Soft, quiet and sweet music for a relaxed listening
- 23.45 EVENING WORSHIP
- 00.00 NEWS AT MIDNIGHT
- 00.05 CLOSE DOWN

THURSDAYS:

- 05.30 DRUM SIGNAL
- 05.33 OPENING ANNOUNCEMENT
- 05.34 NATIONAL ANTHEM/PLEDGE/SEQUENCE
- 05.35 FAMILY PRAYERS
- 05.50 PROGRAMME PARADE
- 05.55 A DISC FOR YOU
- 05.58 DRUM SIGNAL/JINGLE
- 06.00 WORLD NEWS
- 06.10 CROSS RIVER SUNRISE (COMM) Brisk to listen to and smooth flowing music mainly Nigerian
- 06.45 ATTENTION PLEASE
- 07.00 NATIONAL NEWS
- 07.10 NEWS ANALYSIS
- 07.15 MUSIC AFRICANA (COMM) Brisk, colourful, and various musical expeditions mainly African
- 08.00 MUSIC FOR YOU AT HOME (COMM) Music tuneful, bouncy and various

RADIO CROSS RIVER

PROGRAMME SCHEDULE

1397KHz - 215 metres

		FRIDAYS:	SATURDAYS:
09.00	MUSIC RENDEZVOUS (COMM) Music tuneful, buoyant and various	05.30 DRUM SIGNAL	05.30 DRUM SIGNAL
10.00	MUSIC FOR SHOPPERS Sweet flowing music for easy shopping	05.33 OPENING ANNOUNCEMENT	05.33 OPENING ANNOUNCEMENT
11.00	MUSIC WHILE YOU WORK	05.34 'NATIONAL ANTHEM', PLEDGE/SEQUENCE	05.34 'NATIONAL ANTHEM', PLEDGE/SEQUENCE
11.58	DRUM SIGNAL/JINGLE	05.35 FAMILY PRAYERS	05.35 FAMILY PRAYERS
12.00	STATE NEWS IN ENGLISH	05.50 PROGRAMME PARADE	05.50 A DISC FOR YOU
12.10	MIDDAY MELODIES (COMM) Sentimental, light and cheerful with accent on melodies.	05.55 A DISC FOR YOU	05.58 DRUM SIGNAL/JINGLE
13.00	WORLD NEWS	05.58 DRUM SIGNAL/JINGLE	06.10 SATURDAY'S SPECIAL - Rally Babs Ekemvong
13.10	FROM THE NIGERIAN EDITORIALS	06.00 WORLD NEWS	06.45 ATTENTION PLEASE
13.15	MUSIC AT LUNCH TIME (COMM) Music tuneful and melodious tunes to enhance appetite	06.10 CROSS RIVER SUNRISE (COMM)	07.00 NATIONAL NEWS
14.00	DANCE MUSIC ON RECORDS (COMM) Popular African dance tunes including Nigerian Rhythm	06.45 ATTENTION PLEASE	07.10 NEWS ANALYSIS
15.00	ATTENTION PLEASE	07.00 NATIONAL NEWS	07.15 WEEKEND REQUEST
15.15	SENTIMENTAL TUNES	07.15 TRADITIONAL MUSIC	08.00 MUSIC FOR YOU AT HOME (COMM) Sweet and leisurely music for the stay-at-home
15.30	WORLD NEWS IN EFIK, BEKWARA & EJAGHAM	08.00 FEMININE WORLD (From Wednesday 16.15)	09.00 MUSIC RENDEZVOUS (COMM) Music tuneful, buoyant and various
16.00	NATIONAL NEWS	08.30 MUSIC FOR YOU AT HOME	09.30 EBU AJAGHAM EJERE (From Thursday 17.30)
16.10	A DISC FOR YOU	09.00 MUSIC RENDEZVOUS (COMM)	10.00 ANNOUNCER'S CHOICE
16.15	NKA NDITO (Rept. Saturday 14.45)	10.00 MUSIC FOR SHOPPERS	10.15 MUSIC OF OUR LAND (From Thursday 22.30)
16.30	BAND STAND (From Tuesday 17.00)	11.00 MUSIC WHILE YOU WORK	10.45 MEET THE CRBC CHOIR (From Wednesday 19.45)
17.00	TEENAGE TIME (Rept. Saturday 11.00)	11.58 DRUM SIGNAL/JINGLE	11.00 TEENAGE TIME (From Thursday 17.00)
17.30	EBU EJAGHAM EJERE (Rept. Saturday 09.30)	12.00 STATE NEWS	11.30 CITY CARAVAN (Rept. Sunday 11.30)
18.00	EKOM DO (COMM)	12.10 MIDDAY MELODIES	11.58 DRUM SIGNAL/JINGLE
19.00	WORLD NEWS IN ENGLISH	13.10 FROM THE NIGERIAN EDITORIALS	12.00 STATE NEWS IN ENGLISH
19.10	ATTENTION PLEASE	13.15 MUSIC FOR YOUR RELAXATION	12.10 EKOH DO (COMM)
19.30	OUR MUSICAL CULTURE (Rept. Friday 22.15)	14.00 TAKE YOUR CHOICE	13.00 WORLD NEWS
19.45	FEED THE PEOPLE (From Monday 16.15)	15.00 ATTENTION PLEASE	13.10 FROM THE NIGERIAN EDITORIALS
20.00	WORLD NEWS IN EFIK, BEKWARA & EJAGHAM	15.15 SPORTS ROUND-UP (From Thursday 22.15)	13.15 EJAGHAM BALLAD
20.30	EFIK PLAY (From Wednesday 22.30)	15.30 WORLD NEWS IN EFIK, BEKWARA & EJAGHAM	13.30 FEATURE FOCUS ON DEVELOPMENT (From Wed. 21.30)
21.00	FACE THE PEOPLE (Rept. Saturday 21.00)	16.00 NATIONAL NEWS	14.00 EFIK TUNES ON RECORDS
21.30	FEMININE WORLD (From Wednesday 16.15)	16.10 A DISC FOR YOU	14.15 MBOHO NYIN (Rept. Sun 17.30)
22.00	NATIONAL NEWS	16.15 EKUME ANAKAE (From Wednesday 21.00)	14.45 NKA NDITO (From Thur. 16.15)
22.10	WEATHER NEWS/NEWS ANALYSIS	16.45 THE RADIO DOCTOR (From Tuesday 19.45)	15.00 ATTENTION PLEASE
22.15	SPORTS ROUND-UP	17.00 SENTIMENTAL TUNES	15.15 GOSPEL TIME (From Fri. 17.15)
22.20	MUSIC OF OUR LAND (Rept. Saturday 10.15)	17.15 GOSPEL TIME (Rept. Saturday 15.15)	15.30 WORLD NEWS IN EFIK, BEKWARA & EJAGHAM
23.00	CALABAR MUSIC ROOM Soft, sweet-romantic tunes for those awake and listening	17.30 MATTERS OF THE MOMENT (From Wed. 21.30)	15.50 INTERLUDE
23.45	EVENING WORSHIP	18.00 EJAGHAM REQUEST	16.00 NATIONAL NEWS
00.00	NEWS AT MIDNIGHT	18.00 WORLD NEWS	16.10 POP TUNES
00.05	CLOSE DOWN	19.10 ATTENTION PLEASE/INTERLUDE	16.30 SPORTS PAVILLION
		19.30 EKONG NKE (From Tuesday 19.30)	16.45 ANNOUNCER'S CHOICE
		19.45 MUSIC OF OUR STATE (Rept. Sunday 15.15)	17.00 WORLD NEWS IN ENGLISH
		20.00 WORLD NEWS IN EFIK, BEKWARA & EJAGHAM	19.10 ATTENTION PLEASE
		20.30 MBOHO IBAN (Rept. Sunday 19.15 & Monday 20.30)	19.30 CHORAL SINGING
		21.00 FROM OUR GRAM LIBRARY (Rept. Saturday 22.15)	19.45 QUESTION TIME ON CRBS
		22.00 NATIONAL NEWS	20.00 WORLD NEWS IN EFIK, BEKWARA & EJAGHAM
		22.10 WEATHER NEWS/NEWS ANALYSIS	20.30 TIME AND TIDE/FACE THE PEOPLE (Rept. Sun 08.30)
		22.15 CUR MUSICAL CULTURE (From Thursday 19.30)	21.00 FACE THE PEOPLE
		22.30 BAND STAND (From Thursday 16.30)	21.30 BEKWARA MAGAZINE
		23.00 CALABAR MUSIC ROOM	22.00 NATIONAL NEWS
		:34.5 EVENING WORSHIP	22.10 NEWS ANALYSIS/WEATHER NEWS
		00.00 NEWS AT MIDNIGHT	22.15 TALKING POINT
		00.05 CLOSE DOWN	22.45 EVENING WORSHIP
			23.00 CALABAR MUSIC ROOM
			00.00 NEWS AT MIDNIGHT
			00.05 CLOSE DOWN

RIMA RADIO

PROGRAMME SCHEDULE

567KHz - 538 metres
 & 195MHz - 49 metres

0630 - 0005 hrs

Sunday

0526	STATION CALL SIGNAL	1615	SCHOOL CHALLENGE (Rept. on Wed. 0630)	0615	MENTS HANTSI YA DUBI LUDAYI (COMM)
0529	NATIONAL ANTHEM, PLEDGE - OPENING ANNOUNCEMENT	1645	HAUSA BY RADIO ADULT EDUCATION AND EXTENSION SERVICE SAMURU ZARIA (Rept. on Thursday 1615)	0900	NEWS OF THE HOUR
0530	READING FROM THE HOLY KORAN	1700	NEWS ON THE HOUR	0930	RELAX WITH 'KOWA DA KIWON DA YA KAR-BE SHI (Rept. from Fr. 1130)
0645	PROGRAMME SUMMARY (ENGLISH - HAUSA)	1703	PUBLIC SERVICE ANNOUNCEMENTS	1000	TAKAITATTUN LABARU
0800	NEWS AT DAWN	1715	MU ZAGA JAHARMU MAGAZINE PROGRAMME ON EVENTS AROUND SOKOTO STATE (Rept. on Tues. 1315)	1003	BARKA DA HANTSI
0803	MORNING MELODIES (COMM)	1800	TAKAITATTUN LABARU	1030	DON SAMARI (Rept. on Wed. 1430)
0645	THE WEEK AHEAD	1803	ADDU'AR MUSULUNCI EVENING PRAYERS IN ARABIC AND HAUSA	1100	NEWS ON THE HOUR
0700	THE NEWS	1808	RELIGIOUS SONGS	1103	KADE - KADENMU
0715	LET'S WORSHIP	1830	RABIN SA'AR DAN KWAIRD	1130	FEMININE FORUM (Rept. Fr. 2130)
0800	TAKAITATTUN LABARU	1900	THE NEWS	1200	TAKAITATTUN LABARU'
0803	DANODANO JIRAN RABO - WEEKLY HIGHLIGHTS IN HAUSA	1910	INTERLUDE	1203	MUSIC WHILE YOU WORK (COMM)
0815	BARKA DA LAHADI (COMM)	1915	TATSUNNIYA FOLK TALES IN HAUSA (Rept. from Friday 2115)	1300	NEWS SUMMARY (ENGLISH/HAUSA)
0800	NEWS ON THE HOUR	1930	ZABI SONKA (COMM) REQUEST PROGRAMME IN HAUSA	1310	INTERLUDE
0903	PUBLIC SERVICE ANNOUNCEMENTS	2000	STATE NEWS (ENGLISH + HAUSA)	1315	ENGLISH DRAMA
0915	KOWACE TAMBAYA ANSWERS TO LISTENERS QUESTIONS (Rept. on Wed. 1645)	2020	PERSONAL PAID ANNOUNCEMENTS (COMM)	1345	'FIFTEEN MINUTES WITH' NEWS ON THE HOUR
0930	YARO MASGMIN MUTUN: CHILDREN'S PROGRAMME IN HAUSA. (Rept. from Thursday 1730)	2030	GOGI MUSIC -	1400	ANNOUNCER'S CHOICE
1000	TAKAITATTUN LABARU	2100	NEWS ON THE HOUR	1403	TREASURES OF QUR STATE (Rept. from Thursday 2130)
1003	OUR MUSICAL HERITAGE (Rept. on Wed. 1703)	2103	MUSIC ON RECORDS	1415	LABARUM WASANNI
1030	YOUTH FORUM	2115	NEWS LETTER (Rept. from Sat. 1915)	1500	P. P. A. (COMM)
	MAGAZINE PROGRAMME FOR THE YOUTHS (Rept. from Thurs. 1630)	2130	TARIHIM ANNABAWA HISTORY OF PROPHETS IN HAUSA, (Rept. from Wed. 1730)	1530	STATE NEWS
1100	NEWS ON THE HOUR	2200	THE NEWS	1650	P. P. A. (COMM)
1103	HOUSEWIVES SPECIAL - TIT-BITS AND MUSIC FOR WOMEN (Rept. on Wed. 2103)	2215	SPORTS NEWS (Rept. from Sat. 1715)	1800	THE NEWS
1130	TWENTY QUESTIONS (Rept. on Wed. 1615)	2230	WA'AZIN MUSULUNCI (Rept. from Friday 1615)	1810	INTERLUDE
1200	TAKAITATTUN LABARU	2300	TAKAITATTUN LABA-RU	1815	ADDIMU INDALLAHI (Rept. on Thursday 1315)
1203	DON IYALANKU - A REQUEST PROGRAMME FOR ALL THE FAMILY IN HAUSA.	2303	MUKWANA LAFIYA (COMM)	1845	WASIKA DAGA SOKOTO (Rept. from Sun. 1315)
	ZABEN KAURA BISCUIT (COMM)	2345	READING FROM THE HOLY KORAN	1700	NEWS ON THE HOUR
1245	NEWS SUMMARY (ENGLISH + HAUSA)	2400	NEWS ROUND UP (ENGLISH + HAUSA)	1703	PUBLIC SERVICE ANNOUNCEMENT
1300	INTERLUDE	0010	CLOSE DOWN	1715	YOURS EVER (COMM)
1310	WASIKA DAGA SAKWATO (Rept. on Wed. 1645)	0526	STATION CALL SIGNAL	1800	TAKAITATTUN LABARU
1315	MUNA FATA	0529	NATIONAL ANTHEM, PLEDGE + OPENING ANNOUNCEMENT	1803	ADDU'AR MUSULUNCI
1330	LISTENERS LETTERS IN HAUSA (Rept. on Wed. 1030)	0530	READING FROM THE HOLY KORAN	1808	RELIGIOUS SONGS
1400	ACROSS THE NATION	0545	PROGRAMME SUMMARY (ENGLISH + HAUSA)	1815	MIXED BAG (Rept. on Wed 1815)
1600	PERSONAL PAID ANNOUNCEMENT (COMM)	0600	NEWS AT DAWN	1830	SOFT TUNES
1530	STATE NEWS (ENGLISH AND HAUSA)	0605	RIMA SUNRISE (COMM)	1900	THE NEWS PONORAMA
1550	PERSONAL PAID ANNOUNCEMENTS (COMM)	0700	THE NEWS	1930	ZABI SONKA (COMM)
1600	THE NEWS	0715	RIMA SUNRISE (CONTD.)	2000	STATE NEWS (ENGLISH/HAUSA)
1810	INTERLUDE	0730	MAKADIN SAFE	2030	KOTSO MUSIC
		0800	TAKAITATTUN LABARU	2100	NEWS ON THE HOUR
		0803	PUBLIC SERVICE ANNOUNCE-	2103	WAKOKIN ILMI
				2115	ILMI FITILAR DUNIYA (Rept. on Thursday 1445)
				2130	KACICI KACICI (Rept. on Thur. 1030)
				2200	THE NEWS AND WEATHER NEWS
				2215	'TSUR YA FITSAMAU'
				2230	INDA KAMAR (Rept. on Wed. 1330)
				2300	TAKAITATTUN LABARU
				2303	MUKWANA LAFIYA (COMM)

Monday

RIMA RADIO

PROGRAMME SCHEDULE

557KHz - 538 metres
6.195MHz - 40 metres

0530 - 0005 hrs

2445 READING FROM THE HOLY KORAN
2400 NEWS ROUND - UP (ENGLISH/HAUSA)
0010 CLOSE DOWN

Tuesday

0526 STATION CALL SIGNAL
0529 NATIONAL ANTHEM, PLEDGE + OPENING ANNOUNCEMENT
0530 READING FROM THE HOLY KORAN
0545 PROGRAMME SUMMARY (ENGLISH/HAUSA)
0600 NEWS AT DAWN
0605 RIMA SUNRISE (COMM)
0700 THE NEWS
0715 RIMA SUNRISE (Contd.)
0730 MAKADIN SAFE
0800 TAKAITATTUN LABARU
0803 PUBLIC SERVICE ANNOUNCEMENTS
0815 HANTSI YA DUBI LUDAYI (Comm)

0800 NEWS ON THE HOUR
0803 RELAX WITH
0830 MARABA DA BAKI (Rept. from Friday 1430)
1000 TAKAITATTUN LABARU
1003 BARKA DA HANTSI

1030 DAKKARCI MAGAZINE (Rept. from Sat. 1430)
1100 NEWS ON THE HOUR
1103 MUSIC FROM THE ORIENT
1130 HAUSA WRITTEN SONGS FEATURING

1200 TAKAITATTUN LABARU
1203 MUSIC WHILE YOU WORK (COMM)
1300 NEWS SUMMARY (ENGLISH/HAUSA)

1310 INTERLUDE
1315 MU ZAGA JIHARMU (Rept. from Sunday 1715)

1400 NEWS ON THE HOUR
1403 KIDAN NOMA
1430 HIMMA BATA GA RAGGO (Rept. on Sat. 1030)

1500 PERSONAL PAID ANNOUNCEMENTS (COMM)
1530 STATE NEWS (ENGLISH/HAUSA)

1550 P. P. A. (Comm)
1600 THE NEWS
1610 INTERLUDE
1615 CHILDREN'S BAZAAR (Rept. on Friday 1730)

1645 HIKIMAR MAWALLAFA (Rept. on Thurs. 2115)
1700 NEWS ON THE HOUR
1703 PUBLIC SERVICE ANNOUNCEMENTS

1715 SANA'A SA'A (Rept. on Thursday 1345)
1730 HASKEN GIDA (Rept. on Sat. 0930)

1800 TAKAITATTUN LABARU
1803 ADDU'AR MUSULNCI
1808 RELIGIOUS SONGS
1815 KWARYAR KIKA
1830 MAKADIN MAKO
1900 THE NEWS PANORAMA
1930 TSARABAR SAKKWATO (COMM)

2000 STATE NEWS (ENGLISH/HAUSA)

2020 P. P. A. (COMM)
2030 KALANGU MUSIC
2100 NEWS ON THE HOUR
2103 SAREWA MUSIC

2115 YAU DA GOBE (Rept. Friday 0915)
2200 THE NEWS
2215 MIXED MUSIC ON RECORDS
2230 ASALIN CARURUWANMU (Rept. on Fri. 1030)

2300 TAKAITATTUN LABARU
2303 MUKWANA LAFIYA (Comm)
2345 READING FROM THE HOLY KORAN

2400 NEWS ROUND - UP (ENGLISH/HAUSA)
0010 CLOSE DOWN

0526 STATION CALL SIGNAL
0529 NATIONAL ANTHEM, PLEDGE + OPENING ANNOUNCEMENT
0530 READING FROM THE HOLY KORAN

0545 PROGRAMME SUMMARY (ENGLISH/HAUSA)
0600 NEWS AT DAWN
0605 RIMA SUNRISE (COMM)
0700 THE NEWS
0715 RIMA SUNRISE (CONTD.)
0730 MAKADIN SAFE
0800 TAKAITATTUN LABARU
0803 PUBLIC SERVICE ANNOUNCEMENTS

0815 HANTSI YA DUBI LUDAYI (COMM)
0800 NEWS ON THE HOUR
0803 RELAX WITH
0830 SCHOOL CHALLENGE (Rept. from Sunday 1615)

1000 TAKAITATTUN LABARU
1003 BARKA DA HANTSI
1030 MUNA FATA (Rept. From Sun. 1330)
1100 NEWS ON THE HOUR
1103 SAKON KAWA (COMM) (Rept. Sat. 1103)
1130 DAGA BAKIN MAI ITA - FEATURING
1200 TAKAITATTUN LABARU
1203 MUSIC WHILE YOU WORK (COMM)
1300 NEWS SUMMARY (ENGLISH/HAUSA)

0526 STATION CALL SIGNAL
0529 NATIONAL ANTHEM, PLEDGE + OPENING ANNOUNCEMENT
0530 READING FROM THE HOLY KORAN

0545 PROGRAMME SUMMARY (ENGLISH/HAUSA)
0600 NEWS AT DAWN
0605 RIMA SUNRISE (COMM)
0700 THE NEWS
0715 RIMA SUNRISE (CONTD.)
0730 MAKADIN SAFE
0800 TAKAITATTUN LABARU
0803 PUBLIC SERVICE ANNOUNCEMENTS

0815 HANTSI YA DUBI LUDAYI (COMM)
0800 NEWS ON THE HOUR
0803 RELAX WITH
0830 SCHOOL CHALLENGE (Rept. from Sunday 1615)

1000 TAKAITATTUN LABARU
1003 BARKA DA HANTSI
1030 MUNA FATA (Rept. From Sun. 1330)
1100 NEWS ON THE HOUR
1103 SAKON KAWA (COMM) (Rept. Sat. 1103)
1130 DAGA BAKIN MAI ITA - FEATURING
1200 TAKAITATTUN LABARU
1203 MUSIC WHILE YOU WORK (COMM)
1300 NEWS SUMMARY (ENGLISH/HAUSA)

0815 HANTSI YA DUBI LUDAYI (COMM)
0800 NEWS ON THE HOUR
0803 RELAX WITH
0830 SCHOOL CHALLENGE (Rept. from Sunday 1615)

1000 TAKAITATTUN LABARU
1003 BARKA DA HANTSI
1030 MUNA FATA (Rept. From Sun. 1330)
1100 NEWS ON THE HOUR
1103 SAKON KAWA (COMM) (Rept. Sat. 1103)
1130 DAGA BAKIN MAI ITA - FEATURING
1200 TAKAITATTUN LABARU
1203 MUSIC WHILE YOU WORK (COMM)
1300 NEWS SUMMARY (ENGLISH/HAUSA)

1000 TAKAITATTUN LABARU
1003 BARKA DA HANTSI
1030 MUNA FATA (Rept. From Sun. 1330)
1100 NEWS ON THE HOUR
1103 SAKON KAWA (COMM) (Rept. Sat. 1103)
1130 DAGA BAKIN MAI ITA - FEATURING
1200 TAKAITATTUN LABARU
1203 MUSIC WHILE YOU WORK (COMM)
1300 NEWS SUMMARY (ENGLISH/HAUSA)

1000 TAKAITATTUN LABARU
1003 BARKA DA HANTSI
1030 MUNA FATA (Rept. From Sun. 1330)
1100 NEWS ON THE HOUR
1103 SAKON KAWA (COMM) (Rept. Sat. 1103)
1130 DAGA BAKIN MAI ITA - FEATURING
1200 TAKAITATTUN LABARU
1203 MUSIC WHILE YOU WORK (COMM)
1300 NEWS SUMMARY (ENGLISH/HAUSA)

1000 TAKAITATTUN LABARU
1003 BARKA DA HANTSI
1030 MUNA FATA (Rept. From Sun. 1330)
1100 NEWS ON THE HOUR
1103 SAKON KAWA (COMM) (Rept. Sat. 1103)
1130 DAGA BAKIN MAI ITA - FEATURING
1200 TAKAITATTUN LABARU
1203 MUSIC WHILE YOU WORK (COMM)
1300 NEWS SUMMARY (ENGLISH/HAUSA)

1000 TAKAITATTUN LABARU
1003 BARKA DA HANTSI
1030 MUNA FATA (Rept. From Sun. 1330)
1100 NEWS ON THE HOUR
1103 SAKON KAWA (COMM) (Rept. Sat. 1103)
1130 DAGA BAKIN MAI ITA - FEATURING
1200 TAKAITATTUN LABARU
1203 MUSIC WHILE YOU WORK (COMM)
1300 NEWS SUMMARY (ENGLISH/HAUSA)

1000 TAKAITATTUN LABARU
1003 BARKA DA HANTSI
1030 MUNA FATA (Rept. From Sun. 1330)
1100 NEWS ON THE HOUR
1103 SAKON KAWA (COMM) (Rept. Sat. 1103)
1130 DAGA BAKIN MAI ITA - FEATURING
1200 TAKAITATTUN LABARU
1203 MUSIC WHILE YOU WORK (COMM)
1300 NEWS SUMMARY (ENGLISH/HAUSA)

1000 TAKAITATTUN LABARU
1003 BARKA DA HANTSI
1030 MUNA FATA (Rept. From Sun. 1330)
1100 NEWS ON THE HOUR
1103 SAKON KAWA (COMM) (Rept. Sat. 1103)
1130 DAGA BAKIN MAI ITA - FEATURING
1200 TAKAITATTUN LABARU
1203 MUSIC WHILE YOU WORK (COMM)
1300 NEWS SUMMARY (ENGLISH/HAUSA)

1310 INTERLUDE
1315 TARIHIN ISLAM (Rept. on Fri. 1715)

1330 INDA KA-MAR (Rept. From Mon. 2230)
1400 NEWS ON THE HOUR
1403 OUR MUSICAL HERITAGE (Rept. from Sunday 1003)

1430 DON SAMARI (Rept. From Mon. 1030)
1500 PERSONAL PAID ANNOUNCEMENTS (COMM)
1530 STATE NEWS (ENGLISH/HAUSA)

1550 P. P. A. (COMM)
1600 THE NEWS
1610 INTERLUDE
1615 TWENTY QUESTIONS (Rept. Sun 1130)

1645 KOWACE TAMBAYA (Rept. from Sunday 0915)
1700 NEWS ON THE HOUR
1703 PUBLIC SERVICE ANNOUNCEMENTS

1715 LABARU WASANNI (Rept. From Monday 1445)
1730 TARIHIN ANNABAWA (Rept. from Sunday 2130)

1800 TAKAITATTUN LABARU
1803 ADDU'AR MUSULNCI
1808 RELIGIOUS SONGS
1815 MIXED BAG (Rept. from Mon. 1815)

1830 PLEASE BELONG
1900 NEWS PANORAMA
1930 ZABI SONKA
2000 STATE NEWS (ENGLISH/HAUSA)

2020 P. P. A. (COMM)
2030 KUKUMA MUSIC
2100 NEWS ON THE HOUR
2103 HOUSEWIVES SPECIAL (Rept. from Sunday 1130)

2130 SHIRIN FATAWA (Rept. on Sat. 1130)
2200 THE NEWS
2215 MID-WEEK REQUEST (COMM)
2245 READING FROM THE HOLY KORAN

2400 NEWS ROUND - UP (ENGLISH/HAUSA)
0010 CLOSE DOWN

0526 STATION CALL SIGNAL
0529 NATIONAL ANTHEM, PLEDGE + OPENING ANNOUNCEMENTS
0530 READING FROM THE HOLY KORAN

0545 PROGRAMME SUMMARY (ENGLISH/HAUSA)
0600 NEWS AT DAWN
0605 RIMA SUNRISE (COMM)
0700 THE NEWS
0715 RIMA SUNRISE (CONT.)
0730 MAKADIN SAFE

0800 NEWS ON THE HOUR
0803 RELAX WITH
0830 SCHOOL CHALLENGE (Rept. from Sunday 1615)

1000 TAKAITATTUN LABARU
1003 BARKA DA HANTSI
1030 MUNA FATA (Rept. From Sun. 1330)
1100 NEWS ON THE HOUR
1103 SAKON KAWA (COMM) (Rept. Sat. 1103)
1130 DAGA BAKIN MAI ITA - FEATURING
1200 TAKAITATTUN LABARU
1203 MUSIC WHILE YOU WORK (COMM)
1300 NEWS SUMMARY (ENGLISH/HAUSA)

1000 TAKAITATTUN LABARU
1003 BARKA DA HANTSI
1030 MUNA FATA (Rept. From Sun. 1330)
1100 NEWS ON THE HOUR
1103 SAKON KAWA (COMM) (Rept. Sat. 1103)
1130 DAGA BAKIN MAI ITA - FEATURING
1200 TAKAITATTUN LABARU
1203 MUSIC WHILE YOU WORK (COMM)
1300 NEWS SUMMARY (ENGLISH/HAUSA)

1000 TAKAITATTUN LABARU
1003 BARKA DA HANTSI
1030 MUNA FATA (Rept. From Sun. 1330)
1100 NEWS ON THE HOUR
1103 SAKON KAWA (COMM) (Rept. Sat. 1103)
1130 DAGA BAKIN MAI ITA - FEATURING
1200 TAKAITATTUN LABARU
1203 MUSIC WHILE YOU WORK (COMM)
1300 NEWS SUMMARY (ENGLISH/HAUSA)

1000 TAKAITATTUN LABARU
1003 BARKA DA HANTSI
1030 MUNA FATA (Rept. From Sun. 1330)
1100 NEWS ON THE HOUR
1103 SAKON KAWA (COMM) (Rept. Sat. 1103)
1130 DAGA BAKIN MAI ITA - FEATURING
1200 TAKAITATTUN LABARU
1203 MUSIC WHILE YOU WORK (COMM)
1300 NEWS SUMMARY (ENGLISH/HAUSA)

1000 TAKAITATTUN LABARU
1003 BARKA DA HANTSI
1030 MUNA FATA (Rept. From Sun. 1330)
1100 NEWS ON THE HOUR
1103 SAKON KAWA (COMM) (Rept. Sat. 1103)
1130 DAGA BAKIN MAI ITA - FEATURING
1200 TAKAITATTUN LABARU
1203 MUSIC WHILE YOU WORK (COMM)
1300 NEWS SUMMARY (ENGLISH/HAUSA)

1000 TAKAITATTUN LABARU
1003 BARKA DA HANTSI
1030 MUNA FATA (Rept. From Sun. 1330)
1100 NEWS ON THE HOUR
1103 SAKON KAWA (COMM) (Rept. Sat. 1103)
1130 DAGA BAKIN MAI ITA - FEATURING
1200 TAKAITATTUN LABARU
1203 MUSIC WHILE YOU WORK (COMM)
1300 NEWS SUMMARY (ENGLISH/HAUSA)

1000 TAKAITATTUN LABARU
1003 BARKA DA HANTSI
1030 MUNA FATA (Rept. From Sun. 1330)
1100 NEWS ON THE HOUR
1103 SAKON KAWA (COMM) (Rept. Sat. 1103)
1130 DAGA BAKIN MAI ITA - FEATURING
1200 TAKAITATTUN LABARU
1203 MUSIC WHILE YOU WORK (COMM)
1300 NEWS SUMMARY (ENGLISH/HAUSA)

1000 TAKAITATTUN LABARU
1003 BARKA DA HANTSI
1030 MUNA FATA (Rept. From Sun. 1330)
1100 NEWS ON THE HOUR
1103 SAKON KAWA (COMM) (Rept. Sat. 1103)
1130 DAGA BAKIN MAI ITA - FEATURING
1200 TAKAITATTUN LABARU
1203 MUSIC WHILE YOU WORK (COMM)
1300 NEWS SUMMARY (ENGLISH/HAUSA)

1000 TAKAITATTUN LABARU
1003 BARKA DA HANTSI
1030 MUNA FATA (Rept. From Sun. 1330)
1100 NEWS ON THE HOUR
1103 SAKON KAWA (COMM) (Rept. Sat. 1103)
1130 DAGA BAKIN MAI ITA - FEATURING
1200 TAKAITATTUN LABARU
1203 MUSIC WHILE YOU WORK (COMM)
1300 NEWS SUMMARY (ENGLISH/HAUSA)

1000 TAKAITATTUN LABARU
1003 BARKA DA HANTSI
1030 MUNA FATA (Rept. From Sun. 1330)
1100 NEWS ON THE HOUR
1103 SAKON KAWA (COMM) (Rept. Sat. 1103)
1130 DAGA BAKIN MAI ITA - FEATURING
1200 TAKAITATTUN LABARU
1203 MUSIC WHILE YOU WORK (COMM)
1300 NEWS SUMMARY (ENGLISH/HAUSA)

Thursday

0526 STATION CALL SIGNAL
0529 NATIONAL ANTHEM, PLEDGE + OPENING ANNOUNCEMENTS
0530 READING FROM THE HOLY KORAN

0545 PROGRAMME SUMMARY (ENGLISH/HAUSA)
0600 NEWS AT DAWN
0605 RIMA SUNRISE (COMM)
0700 THE NEWS
0715 RIMA SUNRISE (CONT.)
0730 MAKADIN SAFE

0800 NEWS ON THE HOUR
0803 RELAX WITH
0830 SCHOOL CHALLENGE (Rept. from Sunday 1615)

1000 TAKAITATTUN LABARU
1003 BARKA DA HANTSI
1030 MUNA FATA (Rept. From Sun. 1330)
1100 NEWS ON THE HOUR
1103 SAKON KAWA (COMM) (Rept. Sat. 1103)
1130 DAGA BAKIN MAI ITA - FEATURING
1200 TAKAITATTUN LABARU
1203 MUSIC WHILE YOU WORK (COMM)
1300 NEWS SUMMARY (ENGLISH/HAUSA)

1000 TAKAITATTUN LABARU
1003 BARKA DA HANTSI
1030 MUNA FATA (Rept. From Sun. 1330)
1100 NEWS ON THE HOUR
1103 SAKON KAWA (COMM) (Rept. Sat. 1103)
1130 DAGA BAKIN MAI ITA - FEATURING
1200 TAKAITATTUN LABARU
1203 MUSIC WHILE YOU WORK (COMM)
1300 NEWS SUMMARY (ENGLISH/HAUSA)

1000 TAKAITATTUN LABARU
1003 BARKA DA HANTSI
1030 MUNA FATA (Rept. From Sun. 1330)
1100 NEWS ON THE HOUR
1103 SAKON KAWA (COMM) (Rept. Sat. 1103)
1130 DAGA BAKIN MAI ITA - FEATURING
1200 TAKAITATTUN LABARU
1203 MUSIC WHILE YOU WORK (COMM)
1300 NEWS SUMMARY (ENGLISH/HAUSA)

RIMA RADIO

PROGRAMME SCHEDULE

557KHz - 538 metres
6.195MHz - 49 metres

0630 - 0006 hrs

Friday

Saturday

0800	TAKAITATTUN LABARU	0526	STATION CALL SIGNAL	0528	STATION CALL SIGNAL
0803	PUBLIC SERVICE ANNOUNCE- MENTS	0529	NATIONAL ANTHEM, PLEDGE + OPENING ANNOUNCEMENT	0529	NATIONAL ANTHEM, PLEDGE + OPENING ANNOUNCEMENT
0815	HANTSI YA DUBI LUDAYI (COMM)	0530	READING FROM THE HOLY KORAN	0530	READING FROM THE HOLY KORAN
0900	NEWS ON THE HOUR	0545	PROGRAMME SUMMARY (ENG- LISH/HAUSA)	0545	PROGRAMME SUMMARY (ENG- LISH/HAUSA)
0903	PELAX WITH -	0660	NEWS AT DAWN	0600	NEWS AT DAWN
0930	DATSONUWAR ZUMA - (Rept from Saturday 2130)	0700	THE NEWS	0605	WEEKEND SPECIAL (COMM)
1000	TAKAITATTUN LABARU	0700	MAKADIN SAFE	0700	THE NEWS
1003	BARKA DA HANTSI	0800	TAKAITATTUN	0730	MAKADIN SAFE
1030	KACICI KACICI (Rept. from Mon. 2130)	0800	NEWS ON THE HOUR	0800	TAKAITATTUN LABARU
1100	NEWS ON THE HOUR	0915	YAU DA GOBE (Rpt. from Tues. 2115)	0803	PUBLIC SERVICE ANNOUNCE- MENTS
1103	TSUR YA FI TSAMAU	1000	TAKAITATTUN LABARU	0815	HANTSI YA DUBI LUDAYI
1115	MU HADU A DADALA (Rept. on Sat. 1830)	1030	ASALIN GARUTUWANMU (Rpt. from Tuesday 2230)	0900	NEWS ON THE HOUR
1200	TAKAITATTUN LABARU	1100	NEWS ON THE HOUR	0903	MUSHAKATA
1203	MUSIC WHILE YOU WORK (COMM)	1130	KOWA DA KIWON DA YA KA- RBE SHI	0930	HASKEN GID A (Rept on. Tues. 1730)
1300	NEWS SUMMARY (ENGLISH/ HAUSA)	1200	TAKAITATTUN LABARU	1000	TAKAITATT UN LABARU
1310	INTERLUDE	1203	MUSIC WHILE YOU WORK (COMM)	1030	HIMMA BATA GA RAGGO (Rept. on Tuesday 1430)
1315	ADDINU INDALLAHI (Rept. from Monday 1615)	1300	NEWS SUMMARY (ENGLISH/ HAUSA)	1100	NEWS ON THE HOUR
1345	SANA'A SA'A (Rept. from Tue. 1715)	1330	UWAR GIDA GA GORON JU- MU'A	1130	SHIRIN FATAWA (Rept. from Wed. 2130)
1400	NEWS ON THE HOUR	1400	NEWS ON THE HOUR	1200	TAKAITATTUN LABARU
1403	ZABEN MAI GABATARWA	1403	MUSIC FROM OTHER STATES -	1203	SATURDAY JUMP (COMM)
1415	RA' AYIN MATA (Rept. on Sat. 1730)	1430	MARABA DA BAKI (Rept. on Tuesday 0930)	1300	NEWS SUMMARY (ENGLISH/ HAUSA)
1445	ILMI FITILAR DUNIYA (Rept. from 2110)	1530	STATE NEWS (ENGLISH/HAU- SA)	1310	INTERLUDE
1500	PERSONAL PAID ANNOUNCE- MENTS (COMM)	1600	THE NEWS	1403	KADE - KADENMU
1530	STATE NEWS (ENGLISH/HAU- SA)	1615	WA' AZIN MUSULUNCI (Rept. on Sunday 2230)	1430	DAKARCI MAGAZINE (Rept. on Tuesday 1030)
1600	NEWS	1645	MIXED MUSIC ON RECORDS	1500	PERSONAL PAID ANNOUNCE MENTS (COMM)
1630	YOUTH FORUM (Rept. on Sunday 1030)	1700	NEWS ON THE HOUR	1530	STATE NEWS (ENGLISH/HAUSA)
1700	NEWS ON THE HOUR	1715	TARIHIN ISLAM (Rept. from Wed. 1315)	1550	P. P. A. (COMM)
1715	'TSUR YA FI TSAMAU'	1730	CHILDRENS BAZAAR (Rept. from Tues. 1615)	1600	THE NEWS
1800	TAKAITATTUN LABARU	1800	ADDU'AR MUSULUNCI	1615	MU HADU A FADALA (Rept. from Thursday 1115)
1815	KWARYAR KIRA - Pro	1830	AT YOUR REQUEST (COMM)	1700	NEWS ON THE HOUR
1830	ENGLISH DRAMA	1900	NEWS PANORAMA	1715	SPORTS NEWS (Rept. on Sunday 2215)
1900	THE NEWS PANORAMA	1930	ZABI SONKA (COMM)	1730	RA'AYIN MATA (Rept. from Thursday 1415)
1930	ZABI SONKA (COMM)	2000	STATE NEWS (ENGLISH/HAU- SA)	1800	TAKAITATTUN LAHARU
2000	STATE NEWS (ENGLISH/HAU- SA)	2020	P. P. A. (COMM)	1808	RELIGIOUS SONGS
2030	TAUSHI MUSIC	2030	GARAYA MUSIC	1830	DAGA 'RAKIN MAI I'A (Rept. on Wed. 1130)
2110	THE NEWS ON HOUR	2100	NEWS ON THE HOUR	1900	THE NEWS
2103	TSUR YA FI 'SANA'A	2103	ZABEN MAI GABATARWA	1915	NEWS LETTER (Rept on Sun. 2115)
2115	HIKIMAR MAWALIAFA (Rept from Tuesday 1645)	2130	FEMININE FORUM (Rept. on Monday 1130)	2000	ZABI SONKA
2130	TREASURES OF OUR STATE (REPT. on Monday 1415)	2200	THE NEWS	2000	STATE NEWS (ENGLISH/HAUSA)
2200	THE NEWS	2300	TAKAITATTUN LABARU	2030	KUNTIGI MUSIC
2215	MIXED MUSIC ON RECORDS	2345	READING FROM THE HOLY KORAN	2100	NEWS ON THE HOUR
2300	TAKAITATTUN LABARU	2400	NEWS ROUND - UP (ENGLISH/ HAUSA)	2103	ANNOUNCER'S CHOICE
2345	READING FROM THE HOLY KORAN	0010	CLOSE DOWN	2200	THE NEWS
2400	NEWS ROUND - UP (ENGLISH/ HAUSA)			2300	TAKAITATTUN LABARU
0010	CLOSE DOWN			2345	READING FROM HOLY KORAN
				2400	NEWS ROUND - UP (ENGLISH/ HAUSA)
				0010	CLOSE DOWN

RADIO OYO

PROGRAMME SCHEDULE

575KHz - 522 metres

6.25	SOCIAL ADVERTISEMENTS	8.00	STATE NEWS	5.55	YOUR HEALTH
6.30	PARTY POLITICAL BROADCAST	8.05	EYASE	6.00	NEWSCOPE
6.55	ORIKI ORILE	8.30	IROHIN IPINLE OYO	6.25	SOCIAL ADVERTISEMENTS
7.00	NEWSCOPE IN YORUBA	8.35	EYASE	6.30	PARTY POLITICAL BROADCAST
7.10	REQUEST IN OYO DIALECT	9.00	NEWS ON THE HOUR	6.55	ORIKI ORILE
8.00	NEWS ON THE HOUR	9.02	EYASE	7.00	NEWSCOPE IN YORUBA
8.02	SOCIAL ADVERTISEMENTS	10.00	NEWS ON THE HOUR	7.10	REQUEST IN IJESA DIALECT
8.07	AGBELERE	10.02	MID MORNING SHOW	8.00	NEWS ON THE HOUR
8.15	AYOKA	10.30	IROHIN NI SOKI	8.02	SOCIAL ADVERTISEMENTS
8.30	IROHIN NI SOKI	10.32	MID MORNING SHOW	8.15	AYOKA
8.32	ETURAKA	11.00	NEWS ON THE HOUR	8.30	IROHIN NI SOKI
9.00	NATIONAL NEWS	11.02	AYE OBINRIN	8.32	ETURAKA
9.10	NYSC CALLING	11.30	IROHIN NI SOKI	9.00	NATIONAL NEWS
9.30	IROHIN NI SOKI	11.32	AYE OBINRIN	9.10	VOICE OF PROPHECY
9.32	TIWA-N-TIWA	12.00	NEWS ON THE HOUR	9.30	IROHIN NI SOKI
10.00	IROHIN (NATIONAL)	12.02	SCHOOLS BROADCAST	9.32	TIATA YORUBA
10.10	EAGERNESS OF GOD	12.15	CONTROVERSY	10.00	IROHIN (NATIONAL)
10.30	DADA-KUADA	1.00	WORLD NEWS	10.10	HIGHLIGHT
11.00	NEWS ON THE HOUR	1.10	JUST FOR VARIETY	11.00	NEWS ON THE HOUR
11.02	STARLIT HOUR	1.30	REPEAT OF PARTY POLITICAL BROADCASTS	11.02	DUNDUN/SEKERE
12.00	NEWS ON THE HOUR	2.00	IROHIN AGRABAYE	12.00	NEWS ON THE HOUR
12.02	KASUNRE	2.10	THE BIG SHOW	12.02	DISCO
12.55	NEWS SUMMARY	2.30	IROHIN NI SOKI	12.55	NEWS SUMMARY
1 a.m.	STATION CLOSING AND NATIONAL ANTHEM	2.32	THE BIG SHOW	1 a.m.	STATION CLOSING & NATIONAL ANTHEM
		3.00	OYO STATE NEWS		
		3.05	REVIEW OF EDITORIALS		

TUESDAYS:

4.55	TONE AND STATION OPENING	3.15	THE BIG SHOW
5.00	GBERANLE	3.20	IROHIN IPINLE
6.00	NEWS ON THE HOUR	3.35	THE BIG SHOW
6.03	EWI	4.00	NEWS ON THE HOUR
6.10	GBERANLE	4.02	THE BIG SHOW
6.30	NATIONAL NEWS	4.30	IROHIN NI SOKI
6.40	REVIEW OF EDITORIALS	4.32	ADVERTISEMENTS
6.45	GBERANLE	4.37	THE BIG SHOW
6.5	ORIKI ORILE	5.00	THE NEWS
7.00	IROHIN	5.10	THE BIG SHOW
7.10	ORO AWON OLOTU	5.30	IROHIN NI SOKI
7.15	SOCIAL ADVERTISEMENTS	5.32	THE BIG SHOW
7.30	GBERANLE	5.50	EWI

WEDNESDAYS:

4.55	TONE AND STATION OPENING
5.00	TOP OF THE MORNING
6.00	NEWS ON THE HOUR
6.03	EWI
6.10	TOP OF THEM
6.30	NATIONAL NEWS
6.40	REVIEW OF EDITORIALS
6.45	TOP OF THEM
6.55	ORIKI ORILE
7.00	IROHIN
7.10	ORO AWON OLOTU
7.15	SOCIAL ADVERTISEMENTS
7.30	TOP OF THEM

RADIO OYO

PROGRAMME SCHEDULE

575KHz - 522 metres

8.00	STATE NEWS	5.55	OJUSE RE	7.15	SOCIAL ADVERTISEMENTS
8.05	EYASE	6.00	NEWSCOPE	7.30	GBERANLE
8.30	IROHIN IPINLE OYO	6.25	SOCIAL ADVERTISEMENTS	8.00	STATE NEWS
8.35	EYASE	6.30	PARTY POLITICAL BROADCAST	8.05	EYASE
9.00	NEWS ON THE HOUR	6.55	ORIKI ORILE	8.30	IROHIN IPINLE OYO
9.02	EYASE	7.00	NEWSCOPE IN YORUBA	8.35	EYASE
10.00	NEWS ON THE HOUR	7.10	REQUEST IN ONDO DIALECT	9.00	NEWS ON THE HOUR
10.02	MID MORNING SHOW	8.00	NEWS ON THE HOUR	9.02	EYASE
10.30	IROHIN NI SOKI	8.02	SOCIAL ADVERTISEMENTS	10.00	NEWS ON THE HOUR
10.32	MID MORNING SHOW	8.07	AGBELERE	10.02	MID MORNING SHOW
11.00	NEWS ON THE HOUR	8.15	OWE & ASAYAN ORO	10.30	IROHIN NI SOKI
11.02	OMOLERE	8.30	IROHIN NI SOKI	10.32	MID MORNING SHOW
11.30	IROHIN NI SOKI	8.32	ETURAKA	11.00	NEWS ON THE HOUR
11.32	OMOLERE	9.00	NATIONAL NEWS	11.02	TIT BITS
12.00	NEWS ON THE HOUR	9.10	MID WEEK SPORTS	11.30	IROHIN NI SOKI
12.02	SCHOOLS BROADCAST	9.30	IROHIN NI SOKI	11.32	TIT BITS
12.15	HARMONY	9.32	RARA	12.00	NEWS ON THE HOUR
1.00	WORLD NEWS	10.00	IROHIN (NATIONAL)	12.02	SCHOOLS BROADCASTS
1.10	EYIN LO NDAKUKO	10.10	GLAD TIDING	12.15	HIGH LIGHT
1.30	REPEAT OF PARTY POLITICAL BROADCAST	10.30	YUSUFF OLATUNJI	1.00	WORLD NEWS
2.00	IROHIN AGBAYE	11.00	NEWS ON THE HOUR	1.10	CHILDREN'S TIME
2.10	THE BIG SHOW	11.02	CLASSICAL MUSIC	1.30	REPEAT OF PARTY POLITICAL BROADCASTS
2.30	IROHIN NI SOKI	12.00	NEWS ON THE HOUR	2.00	IROHIN AGBAYE
2.32	THE BIG SHOW	12.02	KASUNRE	2.10	THE BIG SHOW
3.00	OYO STATE NEWS	12.55	NEWS SUMMARY	2.30	IROHIN NI SOKI
3.05	REVIEW OF EDITORIALS	1 p.m.	STATION CLOSING AND NATIONAL ANTHEM	2.32	THE BIG SHOW
3.15	THE BIG SHOW			3.00	OYO STATE NEWS
3.30	IROHIN IPINLE			3.05	REVIEW OF EDITORIALS
3.35	THE BIG SHOW	THURSDAYS:		3.15	THE BIG SHOW
4.00	NEWS ON THE HOUR	4.55	TONE AND STATION OPENING	3.30	IROHIN IPINLE
4.02	THE BIG SHOW	5.00	GBERANLE	3.35	THE BIG SHOW
4.30	IROHIN NI SOKI	6.00	NEWS ON THE HOUR	4.00	NEWS ON THE HOUR
4.32	ADVERTISEMENTS	6.03	EWI	4.02	THE BIG SHOW
4.37	THE BIG SHOW	6.10	GBERANLE	4.30	IROHIN NI SOKI
5.00	THE NEWS	6.20	NATIONAL NEWS	4.32	ADVERTISEMENTS
5.10	THE BIG SHOW	6.40	REVIEW OF EDITORIALS	4.37	THE BIG SHOW
5.30	IROHIN NI SOKI	6.45	GBERANLE	5.00	THE NEWS
5.32	THE BIG SHOW	6.55	ORIKI ORILE	5.10	THE BIG SHOW
5.50	EWI	7.00	IROHIN	5.30	IROHIN NI SOKI
		7.10	ORO AWON OLOTU		

RADIO OYO PROGRAMME SCHEDULE

575KHz - 522 metres

5.32 THE BIG SHOW	7.00 IROHIN	4.37 THE BIG SHOW
5.50 EWI	7.10 ORO AWON OLODU	5.00 THE NEWS
5.55 YOUR DUTY	7.15 SOCIAL ADVERTISEMENTS	5.10 THE BIG SHOW
6.00 NEWSCOPE	7.30 TOP OF THEM	5.30 IROHIN NI SOKI
6.25 SOCIAL ADVERTISEMENTS	8.00 STATE NEWS	5.32 THE BIG SHOW
6.30 PARTY POLITICAL BROADCAST	8.05 EYASE	5.50 EWI
6.55 ORIKI ORILE	8.30 IROHIN IPINLE OYO	5.55 AKIYESI OFIN
7.00 NEWSCOPE IN YORUBA	8.35 EYASE	6.00 NEWSCOPE
7.10 REQUEST IN IFE DIALECT	9.00 NEWS ON THE HOUR	6.25 SOCIAL ADVERTISEMENTS
8.00 NEWS ON THE HOUR	9.02 EYASE	6.30 PARTY POLITICAL BROADCAST
8.02 SOCIAL ADVERTISEMENTS	10.00 NEWS ON THE HOUR	6.55 ORIKI ORILE
8.07 AGBELERE	10.02 MID MORNING SHOW	7.00 NEWSCOPE IN YORUBA
8.15 GOVT ¼ hr.	10.30 IROHIN NI SOKI	7.10 REQUEST IN PIDGIN
8.30 IROHIN NI SOKI	10.32 MID MORNING SHOW	8.00 NEWS ON THE HOUR
8.32 ETURAKA	11.00 NEWS ON THE HOUR	8.02 SOCIAL ADVERTISEMENTS
9.00 NATIONAL NEWS	11.02 AGBORANDUN	8.07 AGBELERE
9.10 ILE TITO	11.30 IROHIN NI SOKI	8.15 COOP ¼ HR.
9.30 IROHIN NI SOKI	11.32 AGBORANDUN	8.32 ETURAKA
9.32 IROHIN AYO RECORDS SHOW	12.00 NEWS ON THE HOUR	9.00 NATIONAL NEWS
10.00 IROHIN (NATIONAL)	12.02 SCHOOLS BROADCAST	9.10 EDASOROYI (REPEAT)
10.10 CONTROVERSY (REPEAT)	12.15 WAKA	10.00 IROHIN (NATIONAL)
11.00 NEWS ON THE HOUR	12.30 NASIA	10.10 GO YEE EVANGELISTIC ASS.
11.02 DISCOTHEQUE	1.00 WORLD NEWS	10.30 DISCO THEQUE
12.00 NEWS ON THE HOUR	1.10 JUMAT SERVICE	11.00 NEWS ON THE HOUR
12.02 DISCO	1.30 REPEAT OF PARTY POLITICAL BROADCASTS	11.02 EXTRA VAGANZA
12.55 NEWS SUMMARY	2.00 IROHIN AGBAYE	12.00 NEWS ON THE HOUR
1 p.m. STATION CLOSING AND NATIONAL ANTHEM.	2.10 THE BIG SHOW	12.02 DISCO
FRIDAYS:	2.30 IROHIN NI SOKI	12.55 NEWS SUMMARY
4.55 TONE AND STATION OPENING	2.32 THE BIG SHOW	1 p.m. STATION CLOSING AND NATIONAL ANTHEM.
5.00 TOP OF THE MORNING	3.00 OYO STATE NEWS	SATURDAYS:
6.00 NEWS ON THE HOUR	3.05 REVIEW OF EDITORIALS	4.55 TONE AND STATION OPENING
6.03 EWI	3.15 THE BIG SHOW	5.00 GBERANLE
6.10 TOP OF THEM	3.20 IROHIN IPINLE	6.00 NEWS ON THE HOUR
6.30 NATIONAL NEWS	3.35 THE BIG SHOW	6.03 EWI
6.40 REVIEW OF EDITORIALS	4.00 NEWS ON THE HOUR	6.10 GBERANLE
6.45 TOP OF THEM	4.02 THE BIG SHOW	6.30 NATIONAL NEWS
6.55 ORIKI ORILE	4.30 IROHIN NI SOKI	6.40 REVIEW OF EDITORIALS
	4.32 ADVERTISEMENTS	6.45 GBERANLE

6.55	ORIKI ORILE	5.10	THE BIG SHOW	9.00	NATIONAL NEWS
7.00	IROHIN	5.30	IROHIN NI SOKI	9.10	READING FOR PLEASURE
7.10	ORO AWON OLOTU	5.32	THE BIG SHOW	9.30	IROHIN
7.15	SOCIAL ADVERTISEMENTS	5.60	EWI	9.32	KOTU ASIPA
7.30	GBERANLE	5.55	YOU & THE LAW	10.00	IROHIN (NATIONAL)
8.00	STATE NEWS	6.00	NEWSCOPE	10.10	OLATUNBOSUN SHOW
8.05	EYASE	6.25	SOCIAL ADVERTISEMENTS	10.30	DISCO THEQUE
8.30	IROHIN IPINLE OYO	6.30	SOUNDS OF THE MOMENT	11.00	NEWS ON THE HOUR
8.35	EYASE	6.55	ORIKI ORILE	11.02	EXTRA VAGANZA
9.00	NEWS ON THE HOUR	7.00	NEWSCOPE IN YORUBA	12.00	NEWS ON THE HOUR
9.02	EYASE	7.10	REQUEST IN IGBOMINA DIALECT	12.02	FROM F.M.
10.00	NEWS ON THE HOUR	8.00	NEWS ON THE HOUR	12.55	NEWS SUMMARY
10.02	THE YOUNG ONES	8.02	SOCIAL ADVERTISEMENTS	1 a.m.	STATION CLOSING AND NATIONAL ANTHEM.
10.30	IROHIN NI SOKI	8.07	AGBELERE	NOTE: 12.15 p.m. - 1 p.m. - COMMERCIAL FREE	
10.32	THE YOUNG ONES	8.15	AGBE LOBA	10.10 p.m. - 10.30 p.m. - COMMERCIAL FREE	
11.02	TEMIDIRE (SP)	8.30	IROYIN NI SOKI		
11.32	SATURDAY JUMP	8.32	LANRE ADEPOJU		
12.00	NEWS ON THE HOUR				
12.02	SATURDAY JUMP				
1.30	SPORTS FIXTURES				
1.10	WORLD NEWS				
1.30	AWADA				
1.45	REPEAT OF PARTY POLITICAL BROADCASTS				
2.00	IROHIN AGBAYE				
2.10	BARIKA (SP)				
2.30	IROHIN NI SOKI				
2.32	BARIKA (SP)				
3.00	OYO STATE NEWS				
3.05	REVIEW OF EDITORIALS				
3.15	THE BIG SHOW				
3.30	IROHIN IPINLE				
3.35	THE BIG SHOW				
4.00	NEWS ON THE HOUR				
4.02	THE BIG SHOW				
4.30	IROHIN NI SOKI				
4.32	ADVERTISEMENTS				
4.37	THE BIG SHOW				
5.00	THE NEWS				

From page 8

VOTING

found in the envelope will be counted by the Returning Officer. If the voter fraudulently takes a ballot paper out of the polling station, or fraudulently puts into the ballot box any other paper than the one given him by the officer, he will be liable on conviction to imprisonment for a term not exceeding 12 months or a fine of ₦500 or both:

(iv) If at the time a person applies for a ballot and after he has applied but before he leaves the polling station, a polling agent informs the Presiding Officer that he has reasonable cause to believe that the applicant for the ballot paper is not the person named in the register of voters, and the polling agent undertakes to substantiate a charge of impersonation in a

court of law, the Presiding Officer may order a Police Officer to arrest such person, and the order of the Presiding Officer shall be sufficient authority for the arrest;

(v) If a person misconducts himself at a polling station, or fails to obey any lawful order of the Presiding Officer, the Presiding Officer may order the removal from the polling station of the person so misconducting himself or failing to obey a lawful order; and such a person may be dealt with as for an offence for which he may be arrested without warrant and may be removed accordingly.

3. * After he has cast his vote, the voter shall leave the polling station immediately satisfied that he or she has performed one of his most important civic duties.



FRCN

OUR BANDS

S	4.990 MHz (60 Meters) Short Wave 7.275 MHz (41 Meters) Short Wave 1088 KH (276 Meters) Medium Wave
U	7.235 MHz (41 Meters) Short Wave 6.025 MHz (49 Meters) Short Wave 621 KH (403 Meters) Medium Wave
FRCN KADUNA	6.090 MHz (49 Meters) Short Wave 593 KH (50 Meters) Medium Wave
FRCN IBADAN	657 KH (457 Meters) Medium Wave 575 KH (522 Meters) Medium Wave