

RADIO-TV TIMES

AUGUST 1979



VON's Horizon
Is Expanding

African Refugee
Problems



20k

Improve Circulation

YOUR monthly, the Radio/TV Times is not well circulated

It was only in April that I came to know a magazine like this existed.

I shall be delighted to see this journal circulated throughout the country and not just in Lagos. This would be to the benefit of radio and television audiences.

C.E. Ansa
Ibadan

We have completely reorganised the system of circulating our magazine. Copies of the Radio/TV Times can be obtained in any part of the country. Just ask your vendor for a copy.

Saturday Sunday Movies

TO be candid, many viewers in Lagos State will agree with me that the Movies shown nowadays by NTV Lagos on Saturdays and Sundays are the best of all. If NTV Lagos can keep this up, many viewers will not bother themselves going to cinema houses. I will like N.T.V. Lagos to also screen Indigenous movies such as BISI, THE DAUGHTER OF THE RIVER and many others on Saturdays and Sundays.

NTV Lagos, more grease to your elbows.

Joseph 'Yami' Oshinowo
Lagos.

Bring Back Ekon Do in Efik

AS a regular listener to the radio and reader of the Radio/TV Times, I would appreciate it if you can bring back EKOM DO in Efik language to F.R.C.N. I observed this programme has not been presented for some time past

Mathaw Quickson,
Lagos

Enugu Radio TV Schedules

AS a regular reader of Radio-TV Times, I could remember that, at least for four months now I have not seen programmes schedules for two of the best and the most interesting stations in Nigeria, FRCN and NTV, Enugu, in your magazine, Radio-TV Times, Why?

Ambrose U. Ogbatus
Palm-Grove, Lagos.

Request Coupon for FRCN ONLY?

AS a regular reader of Radio/TV Times, I have seen the record request form included in each. To my surprise I noticed that these forms are limited to only F.R.C.N. stations, in that F.R.C.N. stations are emphatically mentioned in these forms.

I am seizing this opportunity to ask if these forms can also be used for record request on Ogun Radio and other radio stations apart from F.R.C.N. stations.

Jellili 'Toyin Sobande
Itire, Lagos.

We are sorry, Mr. Sobande, the Record Request Coupon in the Radio/TV Times is so far confined to FRCN Stations (or Zones) only.

PEN PAL

I would like Penpals of 16 to 22 years old from the Northern Western and Rivers States of Nigeria.

Name: Patrick I. Amadi.
Age: 19 years.
Address: 3 Willie Omiyi Street, Aguda Surulere, Lagos.



Patrick Amadi

Repeat Laredo Series

I AM a regular reader of Radio TV Times. May I use this medium to ask NTV Lagos, to show one of the tough western movies series which they featured last year.

It was the Laredo series which were very thrilling and enjoyable. Those who viewed it last year would agree with me that it was one of the best film series shown by the station last year.

OBI GODWIN
Yaba - Lagos.

IGNORED REQUEST COUPONS

I am a regular reader of your magazine and I think radio stations ignore the request coupons you publish when these are used by listeners.

I have sent about four of these coupons at different times to F.R.C. 2 and listened to the programmes to which I sent the request but heard nothing of my requests.

Unto whom shall the blame be directed? The editor or the producer of the programme on radio?

Please for the sake of your readers that may not know the correct address of the radio station where they wish to send request coupons, include at the end of each radio station's programmes schedule its address.

Andrew Adedoyin
Mushin
Lagos.

You should send your Request Coupon to the Producer of "Request Programme" in any Radio Station of your choice. For instances in Lagos, send such coupon to Producer FRCN Ikoyi, Lagos; or to Producer, Radio Lagos, Ikaja, Lagos.

COVER

Music is pleasurable and plays a vital part in our lives, and the broadcasting houses throughout the country, as part of their job, ensure we're supplied with reasonable doses of it. On our front cover this month, we bring you one of the devoted people who help brighten our days with this pleasure. She's gorgeous Miss Calline Michael. The Cameraman met her rehearsing her script for the programme, **MUSIC FOR YOUR DELIGHT**, which she produces for the Plateau Broadcasting Corporation.

TV Drama at Weekends

PLEASE allow me space in your Magazine to say something that I think will benefit many people.

I pay attention to the programmes **FOR BETTER FOR WORSE** usually shown on NTV Lagos every Monday at 9.45 p.m. and **WINDS AGAINST MY SOUL** shown on Wednesdays at 10.00 p.m.

I suggest that these programmes be repeated on Saturdays and Sundays respectively to replace **FAMILY HOUR** at 4.00 p.m. on Saturdays and **FROM OUR ARCHIVES** at 2.00 p.m. on Sundays.

This way, anybody who misses the programmes during the week days will have the opportunity to watch them on weekends.

Felix Olufemi Owoseni
Shomolu,
Lagos.

contents

Letters	2
Radio Highlights	4
Organized Holiday Engagements	5
Unauthorized School Levies	6
World Energy Resources	7
African Refugee Problems	8
Preventable Killer Diseases	10
VON's Expanding Horizon	12
Improving Information System	14
Film Censorship	15
Natural Disasters in Africa	16
Public Complaints Commission	17
Casino & Pools Ban	18
Counting Our Blessings	19
TV Highlights	20
TV Programme Schedules	21
Radio Programme Schedules	24
FRCN Meter Bands	48



NIGERIAN RADIO-TV TIMES
Programme Journal of the Federal
Radio Corporation of Nigeria.

Volume 11 No. 8
August, 1979.

PUBLISHERS
Federal Radio Corporation of
Nigeria Broadcasting House,
Ikoyi, Lagos.

EDITOR
Tijani Lawal

SENIOR SUB-EDITOR
Bukola Oladapo

GRAPHIC ARTIST
Ebong Ukut

ASST. GRAPHIC ARTIST
David Aruayingho

COMMERCIAL MANAGER
Folorunso Popoola

STAFF PHOTOGRAPHER
Anunihu Ibegbu

ASST. STAFF PHOTOGRAPHER
Oyetayo Idowu

All Correspondence to:
Publications Unit,
45, Martins Street,
Lagos.

Registered at the G.P.O. as a Newspaper.
Published every month by the Federal
Radio Corporation of Nigeria, Public
Relations Department, Broadcasting
House, Ikoyi, Lagos, and printed by the
Skyway Press Ltd., Kudat Street,
P.M.B. 9204, Ikaja, Lagos.

CALABAR

HOLIDAY HOBBIES ON KIDS' CORNER

HELLO children! I'm sure you're making the best time of your long holidays. How do you do this? Is it by eating and sleeping or playing football or skipping rope for endless hours? Remember the saying: "The devil finds work for the idle finger."

None of you will like to work for the devil, I suppose. So, as you enjoy the holidays, think of getting involved in a useful hobby. There are many things to choose from. How about reading for pleasure, say, simple story books or rhymes. This can improve your English class performance when you're back to classes.

As a boy, have you ever thought of making a paper-kite? Try making one and you'll see how your skill improves. But when flying the kite, make sure

you don't get carried away because you may likely collide with an object and a good day will end badly.

As a girl, have you ever tried making dresses for your baby-dolls or for your baby-sister's dolls. Ask mummy for a few pieces of cloth, a sizeable pair of scissors, thread and needle. By the time you finish making a dress, you'll surely boast of a time well spent. A word of advice for you — mind the pins and needles.

Now, how about trying a bit of weeding the flower or vegetable gardens. Mummy will be very happy with you and you'll feel quite refreshed after the weeding. Think of making a stamp or cartoon album. It's really interesting.

So much for now. You can listen to



Vivian Edet.

lots and lots of hobbies and how to go about them from your little friends in our programme KIDDIES CORNER. This will take the air on Monday, August 16 at 5.15 p.m. The repeat will be the next Friday, 20 at 4.15 It's Happy Holidays from Cross River Radio, Calabar.

Vivian Edet
Producer, CRBS

OVUO IZON ARMISTICE

IN THE olden days, wars were very common amongst villages in the Izon area. As it was disastrous to every living thing and property in the affected area, the few fortunate inhabitants did not receive their opponents in good faith. But there came a time when new devices were created, firstly, to reduce the hatred, secondly, to stop the wars amongst the warring groups and thirdly, to bring peace and love amongst the warring villages. This move is what we call OVUO in Izon.

In an attempt to achieve this effectively, so many things had to be used. Some of them were live frog, palm oil, local gin and a knife. In order to know the details of making an armistice amongst the Izon people during wars, tune to us on August 22 at 8.30pm for its first broadcast and on the 23rd at 4.15 p.m. for a repeat.

P.M. Zidougha
FRCN—Enugu

CALABAR Okpokpo Obon Display

THE EFIK people of the Cross River State have many traditional displays. Some of them are mainly for men, some for women, whilst the youths have their own. There are some that require the presence of both sexes.

One such display is the "Okpokpo Obon." This play is something to watch. Its name is coined from that of the Obon which is exclusively for men. It requires a man with a heart and strength to belong to the Obon Society. The most spectacular thing about this age-long display is the Mysterious Movement of the rectangular structure known as "Ufok Obon."

This structure is always beautifully decorated with expensive materials and some tinted feathers lend some colour. At its base are some palm leaves, and two youths dressed like mermaids sit on the top. One of them sits in the front holding a white cock and swaying from side to side, in time with the drumming and singing by other members. The boy at the back usually carries leaves in both hands, acting exactly as the one in front of him.

They are usually dressed in white loin cloth with white stripes tied around the head and beautiful designs

tattooed on their faces and chest.

This "Ufok Obon" is always accompanied by the Ekpe Masquerade known as "Ekpe Obon." Those going with the "Okpokpo Obon" may choose whatever materials they feel like wearing. But the men must be in their loin cloth whilst the women dress in long flowing gowns known as "Onye—Onyo."

Instruments used in this display are two drums, one talking drum known as "nting-obon", a bigger drum known as "Ibit" and some sticks representing claves. At intervals the menfolk would wrestle with each other. This kind of wrestling is known as "mbok obon."

Apart from deriving some pleasure in participating with others, it teaches one to be cool-headed and disciplined. This is so because, there is always a leader whose orders are obeyed, and the instant punishment for any disobedience is a few strokes of the cane from the Ekpe Masquerades.

Our listeners will then be in for something big when INI NNEME YE MBRE takes the air on the 20th of August, at 5.30 p.m. with a repeat on the 22nd at 10.30 a.m.

FRANCIS EPHRAIM
Principal Producer
Efik Service

ORGANISED HOLIDAY ENGAGEMENTS

— Positive Way Of Promoting National Unity

By Opeyemi Iyiola

ORGANISING for excursion for students during the holidays is another way of encouraging them to know more about life outside their traditional environment. It gives scope for general education by affording students the opportunity to know more people and places within the country and across the borders to neighbouring states.

In particular, the students' excursion programmes serve to promote understanding among the youths of this country. Through such programmes, friends are made and there is the awareness that we have a lot of things in common even though there may be some cultural and ethnic diversities.

Organised holiday engagements are not a novelty because small groups of students belonging to certain school societies have been visiting other areas of the country. But now some state governments have introduced a new dimension to holiday programmes by sponsoring such visits in a conscious effort to encourage ethnic interaction and inculcate in our students the spirit of national identity.

For instance during last year's long vacation, two hundred students from some secondary schools in Lagos State were brought together in a vacation camp at Epe. At the same time, a holiday programme was organised simultaneously on the Lagos Island, Ikeja and Ikorodu districts during which participants were exposed to lectures on good citizenship, community work and excursions to places of educational and cultural interests.

Recently forty students from the Ansar-Ud-Deen Grammar School Lagos were sponsored on a two-week tour of Lomé in Togo Republic by the Nigerian Educational Research Council and the Advanced Teachers College, Surulere. The trip which was

part of a research programme was designed to expose the students to their French-speaking counterparts and improve their spoken French. A similar programme was organised in Cotonou, Benin Republic, last December by the Research Council. Coaching classes in selected sports are also being arranged for students during holiday periods.

The Nigeria Lawn Tennis Association has begun an intensive holiday coaching programme in Lagos at the National Stadium. The objectives are to nurture youths between the ages of 12 and 15 for future lawn tennis competitions and to groom the outstanding ones for leadership in sports.

Towards the further improvement of the programme, the Federal Government could establish national holiday camps where students from all the states in the Federation can meet during long vacations. The pro-

gramme can be carried out on rotational basis annually among the states. Apart from being a positive excursion to other parts of the country it will give the students practical and knowledge of their fatherland.

The holiday camp programmes for any group of students should cover only a part of the long vacation. It parents and guardians interact closely with their children. No institution, this unique, well-meaning, can replace from the impersonal spirit in many a boarding house and organisation. This is why a period of two weeks out of the seven or eight weeks long vacation will be ideal to spend in the ample time to receive parental love and guidance at home.

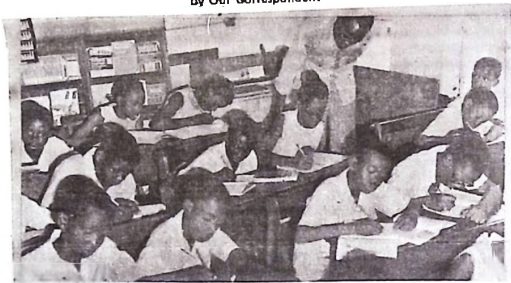


Students at a holiday camp.

Unauthorised School Levies

—INCONSISTENT AND UNJUSTIFIABLE

by Our Correspondent



Students at work. Need to peg fees.

AFTER the abolition of tuition fees, the remaining traditional payments demanded in most secondary schools in the country are for boarding, uniform and books. Other levies are for mid-day meals and development projects.

Students are also required to deposit some money as caution fee. In some cases, these fees were arbitrarily fixed and as a result varied from one institution to another. For example, there was a time in this country when some schools proprietors were charging about twenty naira for tuition while others fixed the amount at sixty naira or even more. Boarding fees were equally left to be determined according to the discretion of the individual school authorities.

Because some of these fees were not always consistent and justifiable, some state governments issued directives on how much each pupil should pay for his education. Since many of the schools were then in private hands, it was difficult for the state ministries of education to control the situation and enforce their directives. In fact, it was the unchecked increases in fees payable in the post-primary institutions that led some states to take over

these institutions their areas. Parents, guardians and the governments felt also that many of the proprietors were not providing basic facilities in spite of the exorbitant fees they were asking the pupils to pay.

It was also the rising cost of keeping children in secondary schools that made the Federal Government to announce a few years ago that no pupil should be charged more than ten naira per term as tuition fee. Predictably enough, the drastic reduction of tuition fees made no difference to the burden of parents and guardians as other levies quickly sky-rocketed.

The Federal Government's recent measure of making tuition free in all post-primary institutions should in principle and in reality mean some relief to parents and guardians. However, the likelihood of school authorities increasing other levies as in the past has made some people sceptical and apathetic about the new measure. For example, some parents in Lagos will readily produce receipts for payments totalling more than eighty naira for books in respect of one child only during the current session. Surely this figure is exorbitant.

This situation explains why the

Ondo State government has decided to take the lead in pegging other fees chargeable in the state's post-primary institutions. With the directive sent out to all school headmasters, it is now impossible for anyone to carry out an upward revision of other levies being charged in the schools. Also, no school authority can impose any levies other than the ones approved by the State Ministry of Education. It should be expected that the measure introduced by Ondo State will be of universal application in the Federation.

Happily, state governments have once again made the improvement of educational facilities the cardinal principle behind their budget this financial year thereby further emphasising state responsibility for education. And for the parents and guardians of secondary school pupils to fully appreciate the measures being taken to lighten their burden, school authorities should begin to identify some of the levies they can drop.

With the implementation of such measures, the burden of education in this country will continue to shift from parents to the state in keeping with the spirit of the new Nigerian Constitution.

World Energy Resources

- IS GENERAL OUTLOOK NEXT CENTURY PROMISING?

By Our Energy Correspondent

DEMAND for fuel and energy doubles in less than two decades. Yet, about 80 per cent of energy resources used today are not renewable. Many Western scientists and economists express their concern about decreasing reserves of organic fuel, particularly oil. In this concern justified?

The world has sufficient reserves of oil including bituminous sands and high-viscosity oil, reserves in the seabed and the ocean floor, for oil production to increase till the year 2000. Then the production of oil will begin slowly to decline but will hardly fall below the present level before the middle of the next century.

Meanwhile, the role of solid fuel will increase substantially. The world's consumption of coal is expected to increase from the present level of about 3,000 million tons a year to between 5,000 and 10,000 million tons a year in 30 years' time. The world has sufficient reserves of coal to meet this rate of output growth.

If the predicted rates of growth in the consumption of energy resources prove right, the reserves of fossil fuels will not run dry for another 100 to 150 years.



Miners at the Enugu Coal Mine. Level of world coal production, 3,000 million tons a year.

In the next few decades the power industry which is new based on fossil fuel will be gradually converted into a power industry based on nuclear fuel. Although nuclear fuel accounts for a small percentage in the production of electricity today, its role is steadily growing. In fifty years it may account for more than one-third of the world's consumption of energy.

Although the reserves of nuclear fuel which can be used for commercial production are not inexhaustible, they are several times greater than those of fossil fuel.



One of Nigeria's DC-10 aircraft. By 2030 liquid fossil fuel will be used mainly by aviation and auto transport.

Judging by the current growth rates of the share of coal in power engineering, by the year 2030 coal will account for about 40 per cent of the world's consumption of energy. But in the remote future coal will share "the destiny" of oil.

After 2000 we may expect the expansion of the industry converting coal into liquid and gaseous fuel. By 2030 liquid fossil fuel will be used mainly by automobile transport and aviation and also as a raw material for the production of chemicals.

Renewable sources of energy, such as hydro-power, solar energy the energy of the wind and of tidal waves and geo-thermal energy, will have a marginal effect on the world's production of energy and fuel. By 2030 they are expected to ensure no more than 10 per cent of the world's demand for energy.

Specialists pin great hopes on nuclear power as a source of energy. At the same time, certain school of thought claims that nuclear power plants are dangerous for the population and suggests that stringent controls should be placed on the construction of such plants. But, are nuclear power plants dangerous for man?

All nuclear power plants are equipped with multistage foolproof nuclear power plants are held under close scrutiny which has revealed no deviation from the normal level of radioactivity so far.

Nuclear power engineering based on the breeders which use all isotopes of uranium and thorium has virtually inexhaustible reserves. This does not mean that thermonuclear power should not be studied as a possible source of energy. Research in this field is being actively conducted and first thermonuclear power plants may be built at the turn of the next century.

The reserves of thermonuclear power are virtually inexhaustible. The process is based on the fusion, at temperatures not less than 50 million degrees of the Celsius scale, of two isotopes of hydrogen: deuterium and tritium. There are vast reserves of deuterium in sea water and tritium can be produced from lithium which can be found in large quantities on our planet.

It should be noted that scientists in different countries concentrate on two different methods of controlling thermonuclear synthesis. The first method consists in slowly heating plasma of specific density which is maintained at a certain level for a long time by a magnetic field.

Research also is being conducted in the field of inertial thermonuclear fusion. The method is based on the heating and compression of a thermonuclear target by a laser impulse of some other type of radiation.

African Refugee Problems

-Urgent Appeal To World Governments

By Eteyen Inyang

IT is unfortunate that either by the design of external forces or sheer neglect on the part of Africa, the refugee problem on the continent is played down to such a level that the world has not been able to fully appreciate its magnitude. The result of this is that these refugees are not getting the attention they deserve.

Recently, the United Nations High Commissioner for Refugees himself confessed after touring some countries harbouring refugees in Southern Africa, that the problem surpassed his imagination.

All told, refugees in Africa are estimated at more than one and a half million, the majority of whom are in Southern Africa. Countries which provide sanctuary for these refugees from Southern Africa include, Tanzania, Mozambique, Zambia, Lesotho, Zaire and Kenya. Altogether, at least 20 countries in Africa harbour some refugees from one country or another.

The regrettable aspect of it, is that the refugee situation keeps worsening daily as more people flee from their countries because of unbearable conditions. The blood-thirsty illegal regime in Zimbabwe and the barbaric apartheid regime in South Africa are responsible for the bulk of the refugees in Africa. For instance, it is estimated that about 2,000 people flee Zimbabwe every month. This situation is likely to worsen as the racist governments intensify their oppression. And already the refugee camps are congested.

Significantly, also, one observes that there are refugees even from countries other than those under racist

minority regimes. This of course, is a result of internal strife within those countries. Therefore, with the creation of many refugee situations, for different reasons, the refugee problem in the continent is not likely to improve in the near future.

In the past, these refugees were mainly adults, but now they include youths, as well as mothers and their babies. The situation is so pathetic that the United Nations High Commissioner at the end of his tour of refugee camps in Africa had to issue a fresh appeal to world governments to step up their aids to the refugees whose plight is great indeed.



Map of Southern Africa showing Zimbabwe, Namibia and S. Africa. Over 2,000 flee these places every month.

In Botswana, no provision is at present made for the children of school age to continue their education especially at the primary school level. At the post-primary and post-secondary levels, offers made by various governments to place these children in schools are still grossly inadequate. Nigeria's decision last year to take in about 100 students in her institutions was described as the largest single offer

ever made by any country.

Apart from the education of refugee children, there are other welfare arrangements to be attended to. The refugees need accommodation which poses a great challenge to the host countries. This is because they require more than mere shelter.

Within the camps and settlements, there must be domestic equipment to make their life tolerable. Healthcare and feeding are among other issues of vital importance to their survival.

To a host country suddenly receiving thousands of refugees, an attempt to meet with the minimum requirements of the refugees is often a difficult, if not an impossible task. This is why international aid has come to stay as a moral obligation fully accepted and supported by practical example by the United Nations and the Organisation of African Unity (OAU).

Unfortunately, African refugees on the whole have not been enjoying the level of international support which they deserve. Even when voluntary organisations like the World Council of Churches send relief through Liberation Organisations, concern is expressed in some quarters. The result is that Africans are left to carry the burden of their fellowmen with the assistance of courageous friends of Africa.

By now, it is abundantly clear that there is an urgent need for world governments to respond positively to the fresh appeal by the United Nations High Commissioner for refugees for more aid to our fellow human beings, who are victims of unfortunate circumstances.

Jimmy Carter's Decision on Sanctions

-AN EXAMPLE OF REAL COURAGE

By Sina Adedipe

THE refusal of President Jimmy Carter to lift the economic sanctions on the puppet regime in Zimbabwe has proved that he is a genuine apostle of democratic ideals and human rights.

Mr. Carter would not revoke the sanctions now because the elections of April which brought Bishop Muzorewa to power were held under a constitution that was drafted and determined by only the whites who constitute just 4% of the population of Zimbabwe. The Africans who make up the remaining 96% of the population in the territory were excluded from any participation in the process of drafting or approving the constitution.

Another objection of the American President was that the constitution reserves for the white minority the power of veto over any significant constitutional reform, gives them vastly disproportionate number of votes in the parliament and continued control over the army, police, judiciary and civil service. Mr. Carter also frowned on the April elections because of the non-participation of the internal representatives of opposing parties, an obvious reference to Mr. Nkomo's ZAPU and Mr. Mugabe's ZANU.



Jimmy Carter. Economic Sanctions continue.

President Carter's decision is an example of courage. This is a time when his popularity in America has dropped considerably in the opinion polls. But this notwithstanding, he has taken a stand against powerful political and business forces in the United States who are behind the racists and their African puppets.

The American leader has a difficult task ahead especially with the Senate. His next line of action should be that of organising and lobbying for support both in the Congress and among the people in general in order to make them aware of the true position of things and the implications of supporting the puppet regime in Zimbabwe.

A country's foreign policy should reflect its national interest. And the facts show that Western interests are better served by being in the good books of African States. Western commercial interests, particularly that of America and Britain, are more with Independent Africa than with South Africa and Zimbabwe. For instance, Nigeria is the second largest supplier of oil to the United States while America's volume of trade with Nigeria is greater than that she has with South Africa.

The time has come for African Countries and the OAU to mount a campaign and diplomatic offensive in Western Europe on the Zimbabwe issue. The sympathy which some people in that region of the world have for the white minority or puppet regimes in Southern Africa stems from reason is ignorance of the fact that independent African States are of better economic importance to America and her allies than the apartheid territory.

The usefulness of speaking out forcefully was demonstrated in a television interview by the United States Ambassador to the United Nations Mr. Andrew Young. He counselled that his country should take seriously Nigeria's warning that America's recognition of Bishop Muzorewa's government would be taken as an affront and a hostile act.

One hopes that Mr. Young's advice will sink deep in the minds not only of the Americans but more especially, that of the British people whose conservative government under Mrs. Thatcher has some soft spot for the puppet regime of Muzorewa. With the age-long claims by Britain to respect human rights and democracy, her recognition of the illegal regime would be deliberate inconsistency. For such an action, the Tory Government should be in no doubt about the embarrassing position into which it would plunge Britain; because in that event, Nigerians will expect the Federal Military Government to adopt far-reaching measures against British interests.

It is not late for Britain to appreciate the points at issue in Zimbabwe as President Carter has done.



Southern Africa showing Zimbabwe.

Preventable Killer Diseases

—Protection for Every Child Essential

by Dr. R. H. Henderson

DIPHTHERIA, whooping cough, tetanus, measles, poliomyelitis and tuberculosis are six diseases of children which have virtually been banished from developed countries. Unfortunately, in the developing parts of the world, these diseases still kill about five million people and cripple many more every year. Although the diseases can be prevented by low cost and easy-to-deliver immunization, less than 10% of the 80 million children born each year in developing countries are immunized against them.

Dr. R. H. Henderson, who is WHO's Programme Manager for Expanded Programme on Immunization, here examines the problem and what can be done about it.

THIS year, as in many years past, millions of children in the developing world will die or be crippled by diseases that effective immunization services have virtually banished from the developed countries. To and this gross inequality, WHO and its member nations have committed themselves to providing immunization services for every child in the world by 1990. These services have been recognized as a basic component of primary health care, a revolutionary new strategy to achieve WHO's proclaimed goal of "health for all by the year 2000".



Immunization will help ensure a healthy, happy child.

Six diseases of childhood are now included in what is known as the Expanded Programme on Immunization (EPI): diphtheria, pertussis (whooping-cough), tetanus, measles, poliomyelitis and tuberculosis. While these six diseases are under attack, basic systems are being developed that will permit countries to deliver any vaccine of merit. These delivery systems will play an increasingly important role in preventing death and disability as advances in research make new vaccines available.

The six diseases provide a good starting point. They kill some five million children each year, and for each dead child, another lives who is crippled, blind, mentally retarded or otherwise disabled for life. These numbers are so large that their significance is not easily grasped by those in developed countries. In the developing countries, the diseases are so commonplace that parents, and sad to say, health workers and political leaders are still for the most part numb to accepting this continuing tragedy. Thus less than 10% of the 80 million children born each year in developing countries are now receiving immunization services, despite their low cost and ease of delivery.

Of the six diseases, the leading killers are MEASLES, PERTUSSIS, and TETANUS of the newborn. The first two diseases have case fatality rates ranging between 1% and 10%, the higher rates more commonly observed among younger and/or less well-nourished children. Tetanus of the newborn probably affects less than 2% of children in developing countries born to unimmunized mothers, but 70% to 90% of those infected die.

The leadingcrippler is POLIOMYELITIS. Virtually every unimmunized child is infected with one or more of the polioviruses. This infection results in paralysis in about 1% of children under the age of three years, and in a higher proportion of children infected at older ages. An ominous trend of increasing numbers of reported paralytic poliomyelitis cases has been observed in developing areas during the past few years. Perhaps this re-



A handicapped child. Low cost, easy-to-deliver immunization can ward off many child-crippling diseases.

flects improved reporting, but it may be an indication also of improved standards of living and sanitation, which, by delaying the average age of first exposure to polioviruses, may be contributing to higher paralytic attack rates. Deaths may occur in 16% of paralytic cases.

Although infection with the bacilli which cause TUBERCULOSIS is not infrequent in childhood, and can spread to many sites within the body or result in meningitis, a child's first infection is likely to cause no symptoms, and may emerge only years later as an active disease, producing disability and death. Tuberculosis remains a major public health problem, with some three-and-a-half million new cases and half a million deaths occurring each year. It can be prevented by BCG vaccination but because the disease remains dormant for a long period in many individuals, the impact of BCG often takes many years, unlike most other vaccines whose results can be observed much more quickly.

NIGERIA'S FISHERIES

— Call For Trained Manpower to Boost Yields



A fisherman casting his net. Developed manpower will improve catch.

RECENTLY, the University of Jos decided to embark on intensified programmes aimed at developing manpower for the nation's fisheries. This is a very commendable move because trained manpower inadequacy is more pronounced in the fisheries sub-sector of agriculture than in, for example, forestry and veterinary services.

In the agricultural sector as a whole, an important feature of the staff pattern is the low percentage of established posts that are actually filled. This trend is more pronounced in the fisheries department.

A country-wide study completed in 1973 by the United Nations Food and Agriculture Organisation and the former Agricultural Research Council of Nigeria, revealed that withdrawal of service by staff at the professional level stood at 2% a year in veterinary services as against 6% in fisheries.

At the senior technical level the rate at which trained manpower left the service ranged from a minimum of

1½% in forestry to a maximum of 5% in fisheries.

These observations therefore emphasise the need to intensify the national manpower development effort in fisheries. Moreover, of all in major agricultural sub-sectors, fisheries was the last to be organised in this country. For example, while the first agricultural school was established in Ibadan in 1921, and the first forestry school in 1942, the first exclusively fisheries school, the Federal Fisheries School, Lagos, was established in 1967.

Although the first courses in this fisheries school started in 1969 no appreciable impact was made until 1976 when the school started training the much needed fisheries assistants and superintendents who constitute the intermediate level cadre. Other state schools of agriculture have, however, also embarked on incorporating fisheries into their discipline while on one polytechnic in the federation is involved in the training of interme-

diate level fisheries personnel.

The training of personnel who constitute the senior technical and the professional staff cannot be thorough unless there are enough senior technical officers to teach them. These personnel can only be trained at present in the universities at graduate and post-graduate levels and also in the technical college. The older universities have post-graduate programmes in fisheries although the number of graduates produced have not made any significant impact on the manpower shortage.

As of now, Nigeria has joined other maritime nations in increasing her Exclusive Economic Zone to 320 kilometres, covering a sea area of nearly a quarter of a million square kilometres. In order to tap the resources of such vast sea area we need more trained fisheries personnel, more geologists, more oceanographers and of course effective administrators to co-ordinate their efforts towards Nigeria's self reliance in food production.

VON's Horizon Is Expanding

—Transmitters Beamed Across Wide World

SEVENTEEN years ago on 1st January, 1962 to be exact, Nigeria's "Voice" was heard for the first time beyond our national borders with the commissioning of two 100 kilowatt transmitters targetted to West and Central Africa, and broadcasting programmes for two hours a day in English and French.

In 1963, the hours of broadcast increased from two to six with the addition of programmes broadcast in Arabic. Then on the 1st of April, 1964 Hausa Language broadcasts were added to the programmes schedule and much of what is Voice of Nigeria today had taken shape. But two other important developments followed which have helped over the years to make the "Voice" of Nigeria a little louder, a little more insistent.

These were the commissioning of new, more powerful transmitters at Ikorodu on December, 24th 1963 and the opening of the External Broadcasting House adjacent to the Home Service Broadcasting House, in Ikoyi on 13th November, 1964.

And in all these years, Voice of Nigeria has grown from a handful of staff working on programmes in two languages broadcast during two hours

of each day through two "whimpering" 100 kilowatt transmitters, to a full service compliment broadcasting programmes in four languages through three much more powerful transmitters for a total of 9½ hours a day.

At the commissioning of the two old transmitters and the beginning of Voice of Nigeria, the then Minister of Information had said inter alia: "The main function [of Voice of Nigeria] will be to project Nigerian news, activities and culture abroad and to ensure that the country's policies and views are better understood by her neighbours". The implied emphasis on "our neighbours" must have been placed seventeen years ago, in the knowledge that at that time, our tiny transmitters were beamed to West and Central Africa only. Today our "neighbours" must include all of the World, because, on the one hand, of our country's increasingly important role in world affairs and on the other hand because the power and potential of modern telecommunications have "shrunk" the world to the extent that "one world" is no longer a dream but a reality of our lifetime.

It is obvious therefore that the single package of programmes in four languages through nine hours of each day could not hope to match Nigeria's aspirations and responsibilities in a comity of nations where Nigerian embassies and consulates span the five continents, where a growing population of Nigerians abroad in all walks of life need to keep in "immediate" touch with developments at home and elsewhere, where, in spite of a rapidly "shrinking" world, time zones differ by as much as eleven hours a day and above all, in a world where Nigeria's "policies and views" on particular issues in certain areas of the globe need to be unequivocally heard, not just around the world at large, but also specifically by the people of those areas.



Mr. Biola Olasope, Zonal Director, FRCN External Service

Once again our horizons are expanding, whereas up till now our programmes in four languages were broadcast as a single package, one after the other, from April 1, 1979, Voice of Nigeria has been speaking simultaneously through even more powerful transmitters to all parts of the world, divided into three target areas, North Africa and Overseas, West Africa, Central and Southern Africa. In the "European Service", we broadcast programmes in English, French, German and Arabic for a total of ten hours a day. The "West African Service" is broadcast in English, French and Hausa also for ten hours a day. While the third service — the "Southern African Service" is in English and Ki-Swahili for a total of four hours daily.

This means that Voice of Nigeria is now broadcasting for additional fifteen hours a day and also in two additional languages, Ki-Swahili and German. It also means that while a few programmes are common to all the services, each service is largely broadcasting programmes relevant to its target area. The Southern African Service is for example



Mrs. Marlo Irikofa Asst. Director Programmes, FRCN External Service.

Expanding Horizon

speaking primarily of freedom in the "occupied lands" of that part of the African continent. While both the West African Service and the Overseas Service are occupied with projecting Nigeria's image abroad through the wide variety of our Talks, Features, Music and Cultural programmes. Apart from English and Ki-Swahili, we intend to use Xhosa and Sotho for our request programmes whilst Africans is being used to broadcast special programmes in accordance with United Nations Agreement.

The schedule below shows the times of broadcast of programmes emanating from the various services. All times are G.M.T.

**FIRST TRANSMISSION
NORTH AFRICA/OVERSEAS
19 Metre Band**

Time	Language
0500 to 0630	English
0630 - 0800	French
0800 - 0830	Arabic
0830 - 1000	English

BREAK

SECOND TRANSMISSION

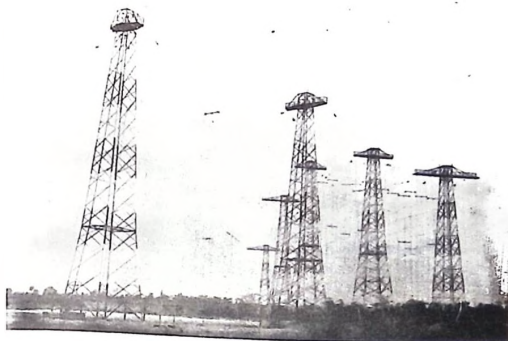
Time	Language
1700 to 1900	Arabic
1800 - 1900	English
1900 - 2000	French
2000 - 2100	German
2100 - 2200	English

**FIRST TRANSMISSION
WEST AFRICAN SERVICE
41M 7265 MHTZ**

Time	Language
0500 to 0600	English
0600 - 0700	French
0700 - 0800	Hausa
0800 - 0900	English

**SECOND TRANSMISSION
WEST AFRICAN SERVICE**

Time	Language
1600 to 1700	English
1700 - 1800	Hausa
1800 - 1900	French
1900 - 2030	English



One of the Transmitters at Ikorodu Station of FRNC.

2030 - 2100	Hausa
2100 - 2200	French

**SOUTHERN AFRICAN
SERVICE
25 Metre Band**

1800 - 1930	English
1930 - 2030	Ki-Swahili
2030 - 2200	English

Listeners in those target areas can now receive programmes from the services as follows: For the North Africa/Overseas Service programmes on 15120 Kilohertz in the 19 metre band, for the West African Service programmes on 7275 kilohertz in the 41 metre band and for the Southern Africa programmes on 1170 kilohertz in the 25 metre band.

The challenges of our expanding horizons are at one and the same time exciting and daunting in the extreme. But it is our earnest hope that in the months and years ahead we will be able to more than hold our

own in the highly competitive struggle to be heard by means of shortwave broadcasting.

One last word, "target areas such as those to which we shall now be broadcasting are not rigid geographical compartments beyond which our transmitters may not transgress as it were. For instance listeners in Canada should be able to pick up our "Overseas Service" programmes, while listeners in Malagasy should be able to tune into our Southern African Service, and so on. And therefore to the evergrowing population of our compatriots and friends abroad, we make this appeal: Write in and tell us what you think of our programmes, signal strength and the quality of our service, write in with requests for information or for records to be played or message to be sent. No broadcasting organisation can live without an audience. We love to hear that you have heard us no matter what you think of what you heard.

Improving Information System

By Andrew Mosmeko.



Femi Adefela, Editor-in-Chief News Agency of Nigeria (left) stressing a point.

THE attention which the present administration is giving to the role of information in the post-military era is a welcome sign that the strategic importance of information in the progress of the nation is being appreciated.

The course which this attention is taking certainly points to the pride of place being given to the dissemination of information at the grass-roots level. Two very relevant steps in this regard are the decentralisation of broadcasting and the establishment of Public Enlightenment in the country.

This system of approach aims at ensuring that our public information efforts should yield maximum benefit to the nation. It was with this in mind that Chief Information Officers met in Ilorin to discuss the role of information in a Presidential system of government. The conference agreed on the need to ensure that the crusade to make information available at the grass-roots level is intensified. In other words, emphasis should be placed on information as well as listening to the views of the people.

The progress of a nation depends first and foremost on the progress of

its people. When 80% of a country's population is illiterate and apathetic to government endeavours, information strategy on a two-way basis cannot be over-emphasized.

There is, therefore, the need to create a situation for a change for the better in what the people KNOW; in what they can DO; and in their ATTITUDE

towards personal upliftment and national development. This change can of course happen only through the maintenance of continuous flow of information between the government and the people.

It is the role of information to create a favourable climate; and to be able to do so, information must assume a wider dimension. It must be seen as meaning more than mere straight-forward reporting of what is happening or has happened. It should include giving out facts to show why things are what they are and what should be done to ensure a change for the better.

This is an approach which the mass media can set in motion and keep alive. Hence the importance of public enlightenment which makes adequate use of opinion leaders in communities and does not discard traditional channels of communication.

There is no doubt that the present efforts of the government are directed towards creating an intelligent and enlightened citizenry. Emphasis should also be given to information from the people and their reaction to information from the government.



Assembling the day's stories in a newsroom.

Film Censorship

—Need to Reject Shows with Adverse Effect

By: Denlunhun Adelgo

THE setting up of the film censorship panel is important and desirable in Nigeria in view of the fact that the present censorship regulations formulated since the colonial period have been overtaken by developments. They have therefore become unsuitable to the needs of a society that wants to project its cultural identity and abhor extreme permissiveness and violence which are contained in some films imported into this country.

The film censorship committee's duties include the recommendation of criteria for censoring films for public viewing and fixing rates for censorship fees. It will also suggest the composition and duties of a board of film censors, and the mode of censorship for foreign films imported for television programmes.

Bearing in mind the extraordinary impact and influence which the mass media have on any society it should be guided by the principle that the film medium plays an appropriate role in nation building.

In this regard, there should be provision for the censorship board to reject films which could have adverse influence on the people and retain those designed for decent entertain-



Denlunhun Adelgo

ment and education. It would thereby ensure that only films of good quality, reflecting acceptable moral, social and political values are approved for distribution and screening in the country.

Today, an overwhelming percentage of the films shown come from foreign countries. While some of these are acceptable, many of them and either too violent in content or convey social values that are detrimental to the type of society we are trying to establish in Nigeria. By careful exercise of its authority, the proposed board would protect Nigerians from injudicious exposure to ideas and norms that might be detrimental to social stability and good public order.

However, the censoring of foreign films should not be the only task in the film industry. There is an urgent necessity to promote the production of indigenous films. At a time when Nigeria is promoting cultural awareness, the film censorship board would be of tremendous help. It could help project our culture by encouraging the production of films that depict this culture. In this regard, the government and private film makers can come together to examine ways and means of achieving this end.

It will do our artistes a lot of good and have a viable organisation which can produce good films. This whereby individuals with limited resources make a gamble only to become disillusioned a shortwhile after by trying factors in film making.

As for the television stations, the review panel should make suggestions to aid them so that they can show more local programmes. The stations themselves should be free to look for sponsors of their programmes. They can transmit more of the plays being staged by the drama groups in our universities.

An area that has also not been fully explored that of exchanging programmes with other African countries or black people in the United States and the West Indies. There are many things in their lives such as their music and carnivals that will interest the Nigerian viewer.

Another issue that requires prompt attention is the welfare of those who patronise the cinemas. In recent times, there have been riots in cinemas in some parts of the country because of the cutting of films and other shortcomings. These have led the burning or destruction of property by infuriated fans. To stop this unpleasant development, it might be necessary to have officials sent to cinemas to ensure that equipment are in good order and serviced regularly. Also the cinemas should have stand-by generators for when the public electricity supply fails.

The task before the censoring panel is really demanding. By this assignment, the nation appeals to the patriotism of the members of this body, their sense of decency and utmost discretion in helping to propose new guidelines on film entertainment, for the well-being of the Nigerian citizen.



Young ones rushing to gain entry into a cinema house. Violent film shows can have adverse social impact on impressionable minds like these.

NATURAL DISASTERS OF AFRICA

— Call for Concerted Action

By Emma Okorie

FOR some time now the issue of natural calamities has been the pre-occupation of several governments in the continent. In fact, the nineteen seventies may well go down in history as a decade notable for natural disasters.

Such countries as Niger, Chad, Ethiopia, Sudan, Kenya, Libya and Mozambique have been hit in recent years by either locust invasion, floods or drought and desert encroachment.

In the Sahel Regions, the great drought of 1973 caused the death of about 250,000 people, apart from the destruction of several crops, livestock, and large tracks of farmland.

In Nigeria, 120,000 square kilometres, representing some twelve per cent of the country's territory is under the threat of desert encroachment. In other words, an extensive area of farmland is already almost barren in a society where most of the inhabitants depend on agriculture for their livelihood. A United Nations report said about 650,000 square kilometres of arable land south of the Sahara had been turned into desert in the last 50 years.

In Mozambique, last year was a very bleak one in the fortunes of the inhabitants of the Limpopo and Zambezi areas. A great flood around the banks of the rivers destroyed lives and property on a large scale. Thousands of people were rendered homeless.

There are two ways in which the African countries affected by these natural disasters have approached their problems. The first is through internal efforts and the other is the mobilization of international assistance.

In Nigeria, the emphasis has been on domestic relief without looking for foreign aid. At the height of the Sahelian drought which affected parts of the Federation some six years ago,

a national relief programme was launched. And a national body was set-up to deal with disasters.

Funds were raised for the assistance of the victims and for rehabilitating vegetation in the affected areas. In cases where disasters are peculiar to an area, the state government normally

establishes a relief fund to which both the federal and other state governments as well as individuals and organisation make contributions.

Generally, the way African governments have been responding to the needs of victims of natural disasters in sister-states has been commendable. Such encouraging co-operation was recorded in the way in which some nations in the continent sought to improve the plight of the less endowed countries affected by the Sahelian drought. The spirit has been kept up. For instance, recently the Federal Government through a token donation, joined other countries in coming to the aid of the victim of flood disasters in Mozambique.

No doubt, individual African States and some foreign nations have played commendable roles in soothing the pains of those affected by large-scale destruction. However, in order to stabilise Africa's relief efforts, the Organisation of African Unity (OAU) should consider creating a virile body to handle refugees and natural disaster problems.

A concerted approach should also be made on a regional basis by the countries afflicted by common natural calamities. All Sahelian states and those that suffer from floods and locust invasions can learn from one another's experience. They can also plan together to monitor probable major weather changes which can bring disaster and not only alert the people but take the necessary precautionary measures.

Since African States have found it beneficial to tackle, through joint efforts, issues like those of colonialism and racism, the desire to provide relief during natural disasters should similarly serve as a rallying point for co-operation.



Aftermath of Sahelian drought. Woman salvaging what she can from the remains of starved goat.

Public Complaints Commission

Better Response From Public Servants Now Evident

By Usman Shehu

THE Commissioner for Public Complaints in the country once complained that their work was being hampered by the non-cooperation of some members of the public service. It was said that replies from public servants to enquiries from Public Complaints Commissioners were unduly delayed and sometimes ignored.

According to the Chief Public Complaints Commissioner, this was partly because the functions and operations of his Commission were not initially clear to public servants who saw the institution as being out to victimise them. Happily, there has been a change of attitude by public servants who now appreciate the work of the commission.

The question arises: What were the factors responsible for the earlier attitude of public servants? One of these can be traced to civil service procedure. For any officer to reply to enquiries from outside, he has to obtain clearance from the highest authority in his department. Such

clearance may not come quickly enough to satisfy the urgency with which the information is needed.

Again, it is unfortunate that many people are reluctant to give information likely to put their colleagues in trouble. Such people deliberately try to suppress the matter by giving an evasive answer or using delaying tactics to frustrate the enquiry altogether.

Besides, there are people who simply do not appreciate their civic responsibility to respond to investigations being carried out in the public interest. It may be pointed out here that the work of the Public Complaints Commission is deeply rooted in the public interest.

After all, the Commission was established in the country by the Federal Government about three and half years ago in order to enhance the administration of justice in the federation. In particular it is to protect the individual against social injustice.

The Commission is another avenue created like the Corrupt Practices Investigation Bureau to reduce the work-load on the Courts of Law which are congested with cases.

Under the decree establishing the Commission, it is empowered to investigate complaints brought by any individuals against a public officer, state and federal institutions and local governments. The Commission can also on its own initiate investigations into any cases of injustice that come to its knowledge.

There are, however, certain issues which are outside the Commission's jurisdiction. These include matters pending before the Supreme Military Council, the Federal Executive Council, the Council of States or a Law Court.

Since it was set up, the Public Complaints Commission has even enjoyed popular patronage because its operations easily commend it to the common man in terms of simplicity of procedure and non-payment of fees. For instance, in 1977 over 8,000 complaints were received by the Commission from members of the public on matters such as non-payment of pensions and gratuities and abuse of office. But 5,000 of the cases could be treated by the Commission in that year. This perhaps underlines the need to establish more branches of the Complaints Commission in different parts of the country especially where a Commissioner's responsibilities at present cover three or more states of the Federation.

And now that public officers are known to be changing their attitude in a way beneficial to the work of the Commission, the stage is being set in this country for the realisation of the objective of public accountability and the protection of the individual, however helpless, against social injustice.



Public Complaints Commissioner helps to reduce work load on the courts.

Casino And Pools Ban

- Good Measure For Society

By Adedun Ogunleye

ONE of the reasons given by the Federal Government for prohibiting casino and pools betting is that they have undesirable social impact on the community. Gambling, as we know, is a game of chance in which the stakers risk much of their usually hard-earned money in expectation of large cash winnings.

On the other hand, those who promote gambling hope to gain a lot because they calculate that in nine chances out of ten, the stakers will be the losers. In fact in certain countries, particularly the United States, notices are conspicuously displayed in front of gambling houses to warn clients that they have little or no chance of gaining anything. But there is no such arrangement in Nigeria, and everyone who takes to gambling keeps hoping that the jackpot, which may never come, is around the corner.



Adedun Ogunleye, Controller of News, Voice of Nigeria.

In this way, the personal problems which the gamblers hope to solve with winnings keep multiplying, leading inexorably to disaster. It is on record that many homes have broken up due to the inability of the gambler-bread winners to meet their obligations to their families. The offices of the social wel-

fare departments in different parts of the country have a great deal of such cases in their files.

It does not appear that the society, in general, takes kindly to gambling either. The various religious organisations do not mince words in condemning the practice as anti-social. And now, the State has come out with a pronouncement against two of the popular forms of gambling.

One of several reasons advanced by the government for banning casinos is that the transfer overseas of its proceeds leads to a net outflow of foreign exchange from the country. The conservation of our foreign reserves has been a matter of major concern to the government and it has taken various measures to achieve the objective. The ban on casinos is, of course, one of such desirable measures.

However, the prohibition of pools betting will no doubt create some problems. Many Nigerians who are employed by the pools promoters will lose their jobs. But incidentally, most of the pools companies operate several other businesses. It should not be too difficult for them to expand such other businesses to absorb those who are being laid off from the pools operations.

But by and large, the need to have a disciplined society overrides individual considerations. Therefore, the effort to protect the interest of the greater number of Nigerians deserves the support of all and any sacrifice that may be involved in this should not be considered too much. After all, the government itself is making some sacrifice by banning casino and pools betting. It is losing the considerable revenue which it derives from these in the form of tax. What paramount is to have a society whose citizens are not bogged down with the problems associated with gambling and who can therefore make their own contributions to the development of the nation.



A pools house.

DEVELOPMENT

Counting Our Blessings

By Eddie Fadairo

THE Progress Report recently being made on government establishments throughout the Federation is indeed a type of reckoning of the achievements of the military regime in Nigeria.

It could be said that institutions and establishments are not adequate criteria for making effective assessment of a government. But it is also true that development or decay of a society is a manifestation of how that society is governed. To be more specific, a team of media-men representing the Radio, Television and some newspaper organisations in the country set out to conduct a general survey of some projects, and development activities of the Federal Government in various parts of the Federation. The result of this country-wide tour you may have read in the newspapers, viewed on the television or listened to

on radio. On the Federal Radio Corporation of Nigeria, Lagos, we've carried the reports for two months now, on Mondays at 6.30 p.m. on Wednesdays at 9.30 p.m. and on Friday at 5.30 p.m.

One area extensively treated on this progress assessment, is agriculture. Nigeria has registered tremendous development in the field of agriculture in recent years. Success in this does not lie only in the Operation Feed the Nation scheme, but also in the establishment of agricultural research stations, agro-service centres, river basin authorities and fertilizer production centres. We've carried reports on all these. We've also given a comprehensive account of the progress being made on the new Federal Territory, Abuja; its suitability, expense, facilities available and so on.



Eddie Fadairo, Controller (T & F).

We found, for example, that there is an extensive dairy project at Ceubi in the North West of Bauchi State, and that the larger dairy operations of the Vom dairy project produces 1,000 to 2,000 litres of milk depending on the season of operation. Also at Vom the National Veterinary Research Institute is leaving no stone unturned in the area of research. About 14 different vaccines are produced there, which represent about 80% of the country's needs.

It has been said that the completion of the Iron and Steel Industry at Ajaokuta will mark a new era in industrial development in Nigeria. In August FRCN will bring you progress reports on this Steel Industry to enable you assess the growth yourself.



Cows grazing. These produce thousands of litres of milk in a season.

BOOK REVIEW

INDUSTRIAL CHART

Reviewer: Edmund Ejekam

EARLY this year another publication was launched in Lagos to join the growing media in Nigeria. It was put out by Zard Associates, Ivertisals and Public Relations Practitioners, Lagos.

This publication, titled INDUSTRIAL CHART, aims at portraying registered logos, trade marks or trade names of companies thereby projecting the corporate image of these market leaders in the country in their various activities.

This aim is based on the advertising principle that this type of exposure is a fast seller of a company and its products because the Logo or trade mark

is impinged on the subconscious making for fast recognition.

INDUSTRIAL CHART appears as digital folder which measures 62 x 91.5 centimeters fully expanded. On one side are produced in multi colours; or other identity of subscribing companies. Also appearing on this side are such business information as monetary conversion chart, general information on Nigerian Customs Service and the Nigerian Enterprises Promotion Board and a list of goods covered by the Federal Government ban on importation.

The flip side bears a full-size black

and white current road map of Nigeria showing state and local government headquarters, other towns and villages, service stations and all category of roads and with metric distances. Considering the great amount of information carried here a little colour might have enhanced easy reading. However it would still prove useful for touring and research.

Although this publication is aimed mainly at decision makers and other top corporate management, it will be a useful addition to the library of the general reading audience. Price is ₦2 a copy.

TELEVISION

NTV LAGOS RESUSCITATE OLD PROGRAMMES

-Some Regulars Retained

Viewers on Channel 10 Lagos are in for a third quarter of a new set of entertaining, informative and educational programmes beginning from Sunday, July 1, 1978. Alongside these, the station, in response to your requests, has resuscitated some of its old programmes while also retaining some regulars — all to enable you have pleasurable evenings.

In addition, Nigerian Television Lagos has increased its viewing period to 78 hours per week — the highest now in the country. The station starts off earlier than before on Sunday at 12 noon with a repeat of JOURNEY TO UNDERSTANDING which comes on air at 9.35 p.m. on Tuesdays. This is a slot that has endeared itself to many, in its attempt at exploring the various myths surrounding diverse philosophical thoughts, helping man to attain higher and better life by appreciating the perfect laws of creation.

WA-ZO-BIA, taken individually, means 'come' in the three major Nigerian languages — Yoruba, Hausa and Igbo respectively — is the title of a new programme fixed for every Sunday at 1.00 p.m. It is designed to make both young and old acquire a working knowledge of the three main languages through simple songs, plays and straight teaching.

Apart from the NEWS PANORAMA at 7.00 p.m. everyday and the NETWORK NEWS at 9.00 p.m., the station will, at 4.55 p.m., give you NEWS TIT BITS — a short summary of the very latest happenings in the world.

MIXED BLESSINGS is a half-hour situation comedy series based on mixed marriages, featuring Thomas — a white engineering graduate and Susan — a black social worker — played by Nigeria's Muriel Oduntan. It will show difficulties that young people experience at marriage and the extra difficulties occurring in a mixed marriage. It comes on your screen every Sunday at 7.45 p.m. — bet you, this you can't afford to miss.

At 9.35 p.m. every Sunday, the Station will feature GUEST OF THE

WEEK — a personality interview with specialists in their own fields to enlighten viewers about current issues around.

On Mondays at 5.00 p.m. VARIETY ENTERTAINMENTS — a programme for children — features a variety of activities including drama and songs by various schools in Lagos State. Apart from this, there is a line-up of other local and foreign programme for the kids. These include THE WORLD OF CHILDREN coming your way at 5.00 p.m. every Friday. This sets out to probe the strange world of the little ones. In it, some children are featured to "probe" the world of the elders in an attempt to reduce the tension between children and the adults. Others are NATURE AND SCIENCE, KIDS FROM CAPER, SCOOBY DOO, MR. PIPER, ABC OF ECONOMICS, THE ROVERS and JUNIOR DRAMA between 4.00 and 6.30 p.m. during the week. The popular ANIMAL GAME is also being featured.

Another in the package for children is AN HOUR WITH MAMA at 5.00 p.m. on Tuesdays. It is an arresting aspect of the African family in the way traditional beliefs and morals are passed down to the younger generations; using the effective medium of story-telling. The kids will be entertained and informed about their societal responsibilities which have their roots in our culture.

At 6.00 p.m. every Tuesday, NTV Lagos will feature INVENTIONS focusing on inventions by Nigerian students and the "egg-heads" in our universities. This will afford Nigerians the opportunity of seeing what could be achieved technologically given the incentive, encouragement and right atmosphere within which to operate.

ARTISTES SHOW CASE returns to Channel 10 every Wednesday at 9.35 p.m. with a little modification. This time the artiste or artist performs for all to see and appreciate his or her artistry. This will be repeated on Monday evenings at 4 o'clock.

TALK BACK is also back on your

screen every Friday at 9.35 p.m. to answer some vital questions that are raised about our programmes by you viewers. A 'station face' will be on the screen to answer your questions. We welcome comments, questions and reactions from you on our programmes. Your responses to this request will help us in our services to you.

NTV Lagos comes out this quarter with a new drama slot titled ADIO'S FAMILY every Friday at 8.30 p.m. It is a series of light-hearted drama sketches revolving around a middle-class family. It has a strong undercurrent of seriousness aimed at presenting the drama of life as it is unfolded in the family situation context.

On Saturdays, the station opens early at 11.00 a.m. with SPORTS INTERNATIONAL followed by BANDSTAND, at 1.00 p.m. punctuated with TALENT HUNT COMPETITION before CHANNEL 10 SPORTS at 3.00 p.m.

ON STAGE will come on at 4.00 p.m. that same day before another sporting slot NETWORK SPORTS.

Another weekend treat you can't afford to miss is DISCO '79 taking the place of "Saturday Rendezvous". It will try to examine the disco phenomenon and its electronic impact on the young and young at heart. The bunch of Disco Wizards will come to our studio, with their "in-tunes and in-movements", to entertain with a Master of Ceremonies in attendance.

Regulars being featured this new quarter include TAKE A TRIP, MATTERS OF THE MOMENT, SPECIALS, MEETING POINT, FOR BETTER FOR WORSE, FEMININE FANCIES, LAGOS REPORT, KINNI NKAN, COMEDY, VOICES and of course your darling VILLAGE HEADMASTER. On the network slots, you will have THE PROGRESS REPORT, THE DEBATE and FACE THE NATION among others. We wish you a happy viewing.

Bola Aloba,
Senior Public Relations Officer.
N.T.V. Lagos.



NTV LAGOS

NIGERIAN TELEVISION STATIONS PROGRAMME SCHEDULE

SUNDAY

12.00	Journey To Understanding (Repeat)
1.00	Wa-Zo-Bla
1.25	Commercial Break
1.30	Lunch Time Movies
2.30	Show International
3.30	Youth Scene
4.30	½Hr. Magic Show
4.55	News Tit Bits
5.00	Voice
5.30	Julie's Choice
5.55	Commercial Break
6.00	Devotional ½Hr.
6.30	*Children's Time
6.55	Commercial Break
7.00	News Panorama
7.45	Mixed Blessings
8.10	Village Headmaster
8.55	Commercial Break
9.00	Network News
9.25	Commercial Break
9.35	Guest Of The Week
10.35	Commercial Break
10.40	Sunday Movies
12.00	News Summary

MONDAY

3.00	Educational Television
4.00	Artistes Show Case (Repeat)
4.55	News Tit Bits
5.00	Variety Entertainment
5.55	Commercial Break
6.00	Science Fiction
6.55	Commercial Break
7.00	News Panorama
7.45	Commercial Break
7.45	Take A Trip
8.30	*Face The Nation
8.55	Commercial Break
9.00	Network News
9.25	Commercial Break
9.35	For Better For Worse
10.35	Commercial Break
10.40	Lagos Report
10.55	People & Places
12.00	News Summary

TUESDAY

3.00	Educational Television
3.30	Children's Movies/ABC Of Economics
4.55	News Tit Bits
5.00	An Hour With Mama
5.55	Commercial Break
6.00	Inventions/* Young World
6.55	Commercial Break
7.00	News Panorama
7.45	Commercial Break
7.60	Political Round Up
8.30	Feminine Fancies
8.55	Commercial Break
9.00	Network News
9.25	Commercial Break
9.35	Journey To Understanding
10.35	Commercial Break
10.40	Medical Story
12.00	News Summary
12.05	Night Cap

WEDNESDAY

10.00	Educational Television
3.00	Educational Television
4.00	Kids From Capet
4.30	The Rovers
4.55	News Tit Bits
5.00	Animal Game
5.55	Commercial Break
6.00	Village Headmaster (Repeat)
6.55	Commercial Break
7.00	News Panorama
7.45	Commercial Break
7.50	Take A Break
8.05	*The Debates
8.55	Commercial Break
9.35	Artistes Show Case
10.35	Commercial Break
10.40	Lagos Report
10.55	Medical Story
12.00	News Summary

THURSDAYS:

10.00	Educational Television
3.00	Educational Television
4.00	Take A Trip (Repeat)
4.45	News Tit Bits
5.00	Junior Drama
5.30	Sports Review
5.55	Commercial Break
6.00	Wild Life
6.30	Kinn n nkan
6.55	Commercial Break
7.00	News Panorama
7.45	Commercial Break

7.50	Take A Break
8.05	*Progress Report
8.55	Commercial Break
9.00	Network News
9.25	Commercial Break
9.35	Meeting Point
10.35	Commercial Break
10.40	Lagos Report
10.45	Programme Exchange
12.00	News Summary
12.05	Night Cap

FRIDAY

10.00	Educational Television
3.00	Educational Television
4.00	Mr. Piper
4.30	Nature & Science
4.45	News Tit Bits
5.00	The World of Children
5.30	Our Health
5.55	Commercial Break
6.00	Devotional ½Hr.
6.30	Comedy
6.55	Commercial Break
7.00	News Panorama
7.45	Commercial Break
7.50	Here & There
8.30	Adio Family
8.55	Commercial Break
9.00	Network News
9.25	Commercial Break
9.35	Talk Back
10.00	*Transition
11.00	Commercial Break
11.05	Detective Story
12.00	News Summary

SATURDAY

11.00	Sports International
1.00	Band Stand
2.00	Talent Hunt Competition
3.00	Channel 10 Sports
4.30	On Stage
4.45	News Tit Bits
5.00	Network Sports
6.55	Commercial Break
7.00	News Panorama
7.45	Commercial Break
7.50	Disco '79
8.30	*Retrospect
8.55	Commercial Break
9.35	Specials
10.35	Commercial Break
10.40	Matters Of The Moment
11.40	Saturday Movies
12.00	News Summary

*Indicates Network.



NTV IBADAN

NIGERIAN TELEVISION STATIONS PROGRAMME SCHEDULE

SUNDAY

12.30	Eight Is enough
1.30	The Way
2.00	Wild Life Cinema
2.30	Sing along
3.00	Masquerade
4.00	Sound Expo
5.00	Fantastic Four
5.30	First Reports
5.40	Irohin Lerefee
5.45	Ilera
6.10	Inside the Papers
6.30	Children's Time
7.00	Bello's Way
7.30	Views and Reports
8.00	Soccer
9.00	Network News
9.30	Irohin
9.40	Highlight
10.40	At your Service
11.00	News Up-Date
11.10	Sunday Night at the Movies
12.10	Station Closing

MONDAY

4.00	Sesame Street
5.30	First Report
5.40	Irohin Lerefee
5.45	Schools Challenge
6.10	Inside the Papers
6.30	Ere Agbe
7.00	Awada
7.30	Views and Reports
8.00	Nigerian Dances
8.30	Face the Nation (II)
9.00	Network News
9.30	Irohin
9.40	Play House
10.40	Living Tomorrow
11.00	News Up-Date
11.10	Wrestling
12.00	Station Closing

TUESDAY

4.00	Schools Broadcast (English)
4.30	Happy Time
5.30	First Report
5.40	Irohin Lerefee
5.45	Sportlight on Oyo State
6.10	Inside the Papers
6.30	Young World
7.00	Kerikeri
7.30	Views and Report
8.00	Speak Out
8.30	Kaaro O Jire
9.00	Network News
9.30	Irohin
9.40	Controversy
10.40	Random Issues
11.00	News Up-Date
11.10	Star Show Case
12.10	Station Closing

WEDNESDAY

4.00	Sesame Street
5.30	First Report
5.40	Irohin Lerefee
5.45	The How and Why of Nature
6.10	Inside the Papers
6.30	Ayelu
7.00	Kootu Asipa
7.30	Views and Reports
8.00	Political Debate (II)
9.00	Network News
9.30	Irohin
9.40	The Answer (R)
10.10	Sports Galore
10.40	Eda Soro Yi
11.00	News Up-Date
11.10	Hotel-De-Jordan
12.10	Station Closing

THURSDAY

4.00	School Broadcast (Mathematics)
4.30	Jolly Train
5.30	First Report
5.40	Irohin Lerefee
5.45	Ogun State Panorama
6.10	Inside the Papers
6.30	Melting Pot
7.00	Bode Wasimi
7.30	Views and Reports
8.00	Progress Report (N)
9.00	Network News
9.30	Irohin
9.40	Agborandun

10.40	Random Issues
11.00	News Update
11.10	The Avengers
12.10	Station Closing

FRIDAY

4.00	Sesame Street
5.30	First Report
5.40	Irohin Lerefee
5.45	Ondo State on the Move
6.10	Inside the Papers
6.30	Asalam Alaikun
7.00	Tiata Yoruba
7.30	Views and Report
8.00	Face The Press
9.00	Net Work News
9.30	Irohin
9.40	Next Week on NTV:
10.40	Press Conference/Transition
11.00	News Up-Date
11.10	Disco Scene
12.10	Station Closing

SATURDAY

12.30	Are you being served?
1.30	Village Headmaster
2.00	Watch and Pray (R)
3.00	Milo Sport Galore
5.30	First Report
5.40	Irohin Lerefee
5.45	Sports Galore
6.10	Inside the Papers
6.30	Take A Pick
7.30	Views and Reports
8.00	Oro to Nlo
8.30	Retrospect (N)
9.00	Net Work News
9.30	Irohin
9.40	The Entertainers
10.10	Newsreal
10.40	Sports Round-Up
11.00	News Up-Date
11.10	Saturday Late Show
12.10	Station Closing





NIGERIAN TELEVISION STATIONS PROGRAMME SCHEDULE

NTV PORT HARCOURT

SUNDAY

- 3.00 News In Brief
- 3.05 From The Weeklies
- 3.15 Project Ufo
- 4.05 405 Special
- 4.45 Review Of The Week
- 5.00 Watch And Pray
- 6.00 Feed Back
- 6.30 Children's Time
- 7.00 Comedy
- 7.30 News
- 7.45 Local Reports
- 8.00 Sunday Drama
- 9.00 Network News
- 9.25 Information Box
- 9.30 For Xtians
- 10.30 The Concert
- 11.15 News Summary

MONDAY

- 4.30 Educational Television
- 5.30 Cartoons
- 5.45 From The Dailies
- 5.50 Wobinda
- 6.30 Nigerian Dances
- 7.00 Sports Report
- 7.30 News At 7.30
- 7.45 Local Reports
- 8.00 Business And You
- 8.30 Face The Nation
- 9.00 Network News
- 9.25 Information Box
- 9.30 Play Of The Week
- 10.30 Wrestling
- 11.15 News Summary

TUESDAY

- 4.30 Educational Television
- 5.30 Cartoons
- 5.40 News In Brief
- 5.45 From The Dailies
- 5.50 Fun Spot
- 6.30 Young World

- 7.00 You And The Law
- 7.30 News
- 7.45 Local Reports
- 8.05 Scope Theatre (Sosei)
- 9.00 Network News
- 9.25 Information Box
- 9.30 Platform
- 10.30 Court Room Drama
- 11.45 News Summary

WEDNESDAY

- 4.30 Educational Television
- 5.30 Cartoons
- 5.40 News In Brief
- 6.45 From The Dailies
- 5.50 Daktari
- 6.30 Show Of The Week
- 7.30 News
- 7.45 Local Reports
- 8.05 Debate
- 9.00 Network News
- 9.25 Information Box
- 9.30 Play House
- 10.30 Mid-Week Movie
- 12.00 News Summary

THURSDAY

- 4.30 Educational Television
- 5.30 Cartoons
- 5.40 News In Brief
- 5.45 From The Dailies
- 5.50 Kindafair
- 6.30 Folk Drama
- 7.00 Your Health
- 7.30 News
- 7.45 Local Reports
- 8.05 Progress Report
- 9.00 Network News
- 9.25 Information Box
- 9.30 Love Boat
- 10.30 Mirror On Life
- 11.30 News Summary

FRIDAY

- 4.30 Educational Television
- 5.30 Cartoons
- 5.40 News In Brief
- 5.45 From The Dailies
- 5.50 Islamic Thoughts
- 6.15 Wild Life
- 6.45 Documentary
- 7.30 News
- 7.45 Local Reports
- 8.00 Commercial Sportlight

- 8.15 Family Rendezvous
- 9.00 Network News
- 9.25 Information Box
- 9.30 Our Guest
- 10.00 Press Conference/Transition
- 11.00 Detective Story
- 11.50 News Summary

SATURDAY

- 3.00 News In Brief
- 3.05 From The Dailies
- 3.15 Our Culture
- 3.45 Folk Music
- 4.00 The Angels
- 5.00 Sports
- 6.15 Date-7
- 7.30 News
- 7.45 Local Reports
- 8.00 Candid Camera
- 8.30 Retrospect
- 9.00 Network News
- 9.25 Information Box
- 9.30 Political Forum
- 10.30 Weekend Movie
- 12.00 News Summary



Mr. Ebiye Ndilomu, Principal Producer, N.T.V. Port Harcourt

FRCN: LAGOS

PROGRAMME SCHEDULE

4.99 MHz. (60 Meters) Short Wave
7.275 MHz. (41 Meters) Short Wave

1088 KHz (276 Meters) Medium Wave
92.936 MHz Frequency Modulated (FM)

SUNDAYS:

06.30	DRUM	SIGNAL	19.45
06.33	STATION ANNOUNCEMENT		20.00
06.33.30	NATIONAL ANTHEM		20.03
06.34	NATIONAL PLEDGE		
06.34.30	FREQUENCY ANNOUNCEMENT		20.20
06.35	PROGRAMME SUMMARY		21.00
06.40	FAMILY PRAYERS		21.03
06.50	READING FROM THE HOLY QURAN		21.06
06.00	NEWS AT DAWN		21.21
06.06	MUSIC TO REMEMBER		21.30
06.66	MOMENT FOR THOUGHT (Rpt. 21.03)		22.00
07.00	NEWWORK	NEWS	22.10
07.10	NEWS ANALYSIS		22.15
07.16	WEEK AHEAD		
08.00	NEWS ON THE HOUR		22.30
08.03	LET'S WORSHIP		22.45
09.00	NEWS ON THE HOUR		
09.03	STOCK MARKET REPORT		23.00
09.16	MAGAZINE A - Z		23.03
09.45	MY DIARY		23.50
10.00	THE NEWS		00.00
10.10	A DISC FOR YOU		00.05
10.15	GANDU STREET		00.05.30
10.30	FROM THE HOSPITAL WARDS		
11.00	NEWS ON THE HOUR		
11.03	F. R. C. N. MAIL BAG		
11.30	JOIN THE BAND WAGON (Rpt. Thurs. 22.30)		
12.00	NEWS ON THE HOUR		
12.03	FAMILY FAVOURITES		
13.00	THE NEWS		
13.03	LUCKY DIP		
13.15	FACTS AND FIGURES / OCTOBER LECTURES		
13.30	GUIDE TO NIGERIAN MUSIC		
14.00	ACROSS THE NATION		
15.00	NEWS ON THE HOURS		
15.03	BEHIND THE HEADLINES		
15.30	PLAY OF THE WEEK		
16.00	NETWORK NEWS		
16.10	A DISC FOR YOU		
16.15	SCHOOLS CHALLENGE (Rpt. Tues. 13.15)		
16.45	MAKING THE MAN (Rpt. Tues. 19.45)		
17.00	NEWS ON THE HOUR		
17.03	FRCN. FORUM/PEOPLE'S FORUM/SYMPOSIUM/PLEASE EXPLAIN/BRAINS TRUST (Rpt. Mon. 17.15)		
17.48	ANNOUNCER'S CHOICE		
18.00	NEWS ON THE HOUR		
18.03	BEHIND THE HEADLINES		
18.30	THE WORLD OF SPORTS		
19.00	THE NEWS		
19.10	NEWS ANALYSIS		
19.15	WHAT THE PEOPLE SAY (From: Sat. 21.10)		
19.30	ISLAMIC MODE OF WORSHIP		

OUR MUSICAL INSTRUMENTS (Rpt. Tues. 09.45)	12.30
NEWS ON THE HOUR	13.00
IN A LIGHTER MOOD/IT'S A SMALL WORLD (Rpt. Tues. 13.45)	13.10
SUNDAY NIGHT SERVICE	13.15
NEWS ON THE HOUR	13.45
MOMENT FOR THOUGHT (From: 06.56)	14.00
STARS IN THE MAKING (Rpt. Wed. 13.45)	14.03
PIANO MUSIC	14.45
COMMUNITY HYMN	15.00
SINGING	15.03
NETWORK NEWS	16.00
NEWS ANALYSIS	16.10
HEALTH IS WEALTH/FROM THE LEGAL STAND POINT (Rpt. Mon. 19.45)	16.2
FROM THE ORGAN-LOFT NUR ALA NUR (Rpt. Mon. 21.45)	17.00
NEWS ON THE HOUR	17.03
SUNDAY SERENADE	17.48
EPILOGUE	18.00
NEWS AT MID-NIGHT	18.03
CLOSE DOWN	18.08
NATIONAL PLEDGE AND ANTHEM	18.13
	18.15
	18.30

MONDAYS:

DRUM SIGNAL	05.30
STATION ANNOUNCEMENT	05.33
NATIONAL ANTHEM	05.33.30
NATIONAL PLEDGE	05.34
FREQUENCY ANNOUNCEMENT	05.34.30
PROGRAMME SUMMARY	05.35
FAMILY PRAYERS	05.40
READING FROM THE HOLY QURAN	05.50
NEWS AT DAWN	06.00
FROM THE NIGERIAN EDITORIALS (Rpt. 13.10)	06.03
MOMENT FOR THOUGHT (Rpt. 06.56&21.03)	06.08
SOUNDS UNLIMITED	06.11
MOMENT FOR THOUGHT (Rpt. 21.03)	06.56
NETWORK NEWS	07.00
SPOTLIGHT (Rpt. 18.03)	07.10
SOUNDS UNLIMITED (Cont'd)	07.15
NEWS ON THE HOUR	08.00
CULTURAL MUSIC	08.03
MUSIC FOR PLEASURE (From: Sun. 13.30)	08.15
EDUCATIONAL SERVICE	08.45
NEWS ON THE HOUR	09.00
MIXED GRILL (Compilation)	09.03
GUIDE TO NIGERIAN MUSIC	09.30
THE NEWS	10.00
PROGRAMME PROMO (FRCN Forum/Brains Trust)	10.10
EDUCATIONAL SERVICE	10.15
NEWS ON THE HOUR	11.00
EDUCATIONAL SERVICE	11.03
NEWS ON THE HOUR	12.00
EDUCATIONAL SERVICE	12.03

MID-DAY RHYTHMS	12.30
THE NEWS	13.00
FROM THE NIGERIAN EDITORIALS (From: 06.03)	13.10
YOUTH RENDEZVOUS (From Sat. 11.30)	13.15
MR. & MRS. N.J./BELIEVE IT OR NOT (Rpt. Tues. 08.15)	13.45
NEWS ON THE HOUR	14.00
HOME MAKERS SPECIAL (Rpt. Wed. 14.03)	14.03
INTERNATIONAL YEAR OF THE CHILD (From: Sun. 15.45)	14.45
NEWS ON THE HOUR	15.00
KALEIDOSCOPE	15.03
NETWORK NEWS	16.00
EDUCATIONAL SERVICE	16.10
KALEIDOSCOPE	16.2
NEWS ON THE HOUR	17.00
FRCN FORUM/SYMPOSIUM/PLEASE EXPLAIN/PEOPLE'S FORUM/BRAINS TRUST (From: Sun. 17.03)	17.03
TWELVE MINUTES WITH ... (Rpt. Wed. 17.18)	17.48
NEWS ON THE HOUR	18.00
SPOTLIGHT (From: 07.10)	18.03
LET'S GO FARMING	18.08
A DISC FOR YOU	18.13
MY DIARY (From: Sun. 09.45)	18.15
TIME FOR HIGHLIFE (Rpt. Sat. 18.30)	18.30
NEWS PANORAMA	19.00
MYTHS AND LEGENDS (Rpt. Fri. 08.15)	19.30
HEALTH IS WEALTH/FROM THE LEGAL STAND POINT (From: Sun. 22.15)	19.45
NEWS ON THE HOUR	20.00
TOMORROW ON FRCN. LAGOS/PUBLIC SERVICE ANNOUNCEMENTS	20.03
EDUCATIONAL SERVICE	20.15
NIGERIAN RHYTHMS	20.30
EDUCATIONAL SERVICE	20.45
NEWS ON THE HOUR	21.00
MOMENT FOR THOUGHT (From: 06.56)	21.03
PROGRAMME NEWS	21.06
FOR MUSLIMS	21.08
EVENING WORSHIP	21.20
MUSIC OF OUR AGE	21.30
NUR ALA NUR (From: Sun. 22.45)	21.45
NETWORK NEWS	22.00
NEWS ANALYSIS (Rpt. Tues. 07.10)	22.10
EDUCATIONAL SERVICE	22.15
MUSICAL SHADES (Rpt. Sat. 22.30)	22.30
NEWS ON THE HOUR	22.30
TRUE TO LIFE (Rpt. Wed. 17.03 & Thurs. 08.15)	23.00
MUSIC TO END THE DAY	23.03
NEWS AT MID-NIGHT	23.15
DAY IS DONE	00.00
CLOSE DOWN	00.05
NATIONAL PLEDGE AND ANTHEM	00.05.30

FRC-2 PROGRAMME SCHEDULE

MF - 1458KHz - 206 metres

FM - Stereo 97.6MHz

0600 - 1205 hrs

1530 - 0000 hrs

0600 - 0000 hrs

SUNDAYS:		0638	HAPPY DAY - (Continues)	0600	WOMAN TO WOMAN
05:17	XYLOPHONE CALL SIGNAL	0730	NEWS BEAT	0630	NEWS BEAT
0855	OPENING FORMALITIES	0735	HAPPY DAY - (Final)	0938	WOMAN TO WOMAN - (Continues)
0800	SUNDAY MORNING MELODIES - Sounds at dawn on Sunday	0800	FOR YOU AT HOME - Medley of bright music discs selected should reflect a cooling off period after the busy season on Happy Day.	1000	DISC PARADE - A parade of the current best selling musical treats
0830	NEWS BEAT	0830	WOMAN TO WOMAN - Chit-Chat house-hold hints & tips for the Lady at Home.	1030	NEWS BEAT
0835	SUNDAY MORNING MELODIES - (Continues)	0938	WOMAN TO WOMAN - (Continues)	1038	DISC PARADE - (Continues)
0730	NEWS BEAT	1000	SOUNDS TROPICANA - Lively Sounds from the black and African World	1100	WHAT THE PAPERS SAY
0735	SUNDAY MORNING MELODIES - (Final)	1030	NEWS BEAT	1200	JUJU MUSIC - Spotlight on the Music of one lulu music orchestra.
0800	JUST A CHAT - Chit Chat with an interesting person, his music, his friends, books, hobbies with reminiscences on his childhood.	1035	SOUNDS TROPICANA - (Continues)	1210	THE WORLD AT NOON
0830	WISHING YOU WELL -	1100	WHAT THE PAPERS SAY	1330	Jazz
0835	NEWS BEAT	1106	REGGAE TIME - A spotlight on Top Reggae	1338	BUKA CONNECTION - Indigenous Social Music
0838	WISHING YOU WELL - (Final)	1200	THE WORLD AT NOON	1430	NEWS BEAT
1000	RHYTHM A-GO-GO - Mixed bag of heavy instrumental music	1210	TAKE ONE	1438	BUKA CONNECTION - Part II
1015	SOUNDS ON SUNDAY - Mixed bag of Instrumental and other hits for Sunday listening.	1215	THAT'S LIFE (from Thursday 18.15)	1530	NEWS BEAT
1030	NEWS BEAT	1230	BUKA CONNECTION - Indigenous Social Music	1538	HOMEWARD BOUND - (Discs trip for people on the move)
1035	THINKING ALOUD - From Saturday 1300.	1338	NEWS BEAT	1630	NEWS BEAT
1050	HIGHLIFE MUSIC.	1430	BUKA CONNECTION - Part II	1638	HOMEWARD BOUND - High life music old and new
1100	'NEW ON THE SCENE' (New names or New Discs on the Nigerian Music Scene)	1630	NEWS BEAT	1700	NEWS BEAT
1200	WORLD AT NOON	1638	HOMEWARD BOUND - (Discs trip for people on the move)	1730	NEWS BEAT
1210	SUNDAY BRUNCH - Jumpy Musical Session	1830	NEWS BEAT	1800	SPOT THE TUNE - Result of the preceding week's quiz.
1300	SUNDAY BRUNCH - (Continues)	1838	HOMEWARD BOUND - (Continues)	2130	NEWS BEAT
1400	CITIZEN MUDA - Scenes from the diary of a city man	1700	JUNIOR CHOICE - Musical get-together for the Young Including Disc requests from listeners.	2135	MELODY LANE - Mixed bag of Melodic tunes
1430	NEWS BEAT	1730	NEWS BEAT	2230	MELODY LANE - (Continues)
1435	SUNDAY STEREO FIESTA (FAMILY FAVOURITES) - Listeners' letters, requests etc.	1735	JUNIOR CHOICE - (Continues)	2030	NEWS BEAT
1530	NEWS BEAT	1800	THE WORLD AT SIX	2038	SPOT THE TUNE - Result of the preceding week's quiz.
1535	SUNDAY STEREO FIESTA - Listener Choice (Continues)	1810	SPOT THE TUNE - Result of the preceding week's quiz.	2130	NEWS BEAT
1630	NEWS BEAT	1830	NEWS BEAT	2135	MELODY LANE - Mixed bag of Melodic tunes
1635	SCHOOLS CHALLENGE	1838	HOMEWARD BOUND - (Continues)	2230	MELODY LANE - (Continues)
1708	MUSIC FOR YOU	1935	MELODY LANE - (Continues)	2235	NEWS BEAT
1800	WORLD AT SIX	2030	NEWS BEAT	2330	NEWS BEAT
1810	SHOWTIME - FRC-2 Variety Show	2038	RHYTHM RENDEZVOUS - (Catchy hits from all around)	2338	NEWS BEAT
1835	MELODY LANE	2130	NEWS BEAT	2400	CLOSE DOWN
1930	NEWS BEAT	2135	YOUR FAVOURITES - Listeners' favourite records played for them at their request.	0653	XYLOPHONE CALL SIGNALS
1935	MELODY LANE (Continues)	2230	NEWS BEAT	0658	OPENING FORMALITIES
2030	NEWS BEAT	2235	NIGHT AT THE TURNTABLE - Music to end the day	0600	HAPPY DAY
2035	RHYTHM RENDEZVOUS - Mixed bag of catchy hits from all around	2330	NEWS BEAT	0630	NEWS BEAT
2130	NEWS BEAT	2335	NIGHT AT THE TURNTABLE - (Final)	0635	HAPPY DAY - (Continues)
2135	RHYTHM RENDEZVOUS - (Continues)	2400	CLOSE DOWN	0730	NEWS BEAT
2230	NEWS BEAT	TUESDAY:		0738	HAPPY DAY - (Final)
2235	MEDITATION - Reflections on some aspects of life and living	0853	XYLOPHONE CALL SIGNALS	0800	FOR YOU AT HOME
2245	INTERLUDE - Light Music on Gramophone Records.	0858	OPENING FORMALITIES	0830	NEWS BEAT
2300	FRC II CONCERT TIME - A date with the Classics	0935	HAPPY DAY - (Continues)	0835	HAPPY DAY - (Continues)
2315	FRC II - CONCERT TIME - Final	0938	NEWS BEAT	0930	WOMAN TO WOMAN
2400	CLOSE DOWN	0935	NEWS BEAT	0938	WOMAN TO WOMAN
MONDAY		0938	HAPPY DAY - (Final)	1000	MUSIC WHILE YOU WORK - Programme of mixed music
0653	XYLOPHONE CALL SIGNALS	0938	FOR YOU AT HOME	1030	NEWS BEAT
0658	OPENING FORMALITIES	0830	NEWS BEAT	1035	MUSIC WHILE YOU WORK - (Continues)
0600	HAPPY DAY - Lively busy Sounds to start off the day.	0835	FOR YOU AT HOME - (Continues)	1100	WHAT THE PAPERS SAY
0630	NEWS BEAT			1105	REGGAE TIME - A Spotlight on Reggae hits

FRCN

LAGOS PROGRAMME

As close to you as your
radio dial.

Receiving FRCN LAGOS Programme clearly
on your radio depends on only 2 things:

- (i) Knowing the right frequency.
- (ii) Tuning your set correctly.

MEDIUM WAVE:

05.30-0005 Hrs ... 1088 kHz-276 Metres.

FREQUENCY MODULATED BAND (VHF-FM)

05.30-0005 Hrs ... 92.935 MHz.

SHORT WAVE:

05.30-00.05 Hrs ... 4.990 MHz-60 Metre Band.
11.00-18.00 Hrs ... 7.275 MHz-41 Meter Band.

For listeners outside Lagos and throughout
the country, the recommended frequencies for
receiving FRCN LAGOS Programmes direct are:-

From 05.30-00.05 Hrs ... 4.990 MHz.
From 11.00-18.00 Hrs ... 7.275 MHz.



FRCN: ENUGU

PROGRAMME SCHEDULE

6.025 MHz (40 Meters) Short Wave
4.750 MHz (80 Meters) Short Wave
621 KHz (403 Meters) Medium Wave

SUNDAYS:

0530	CALL SIGN	1403	CONCERT MUSIC	0700	0600) NATIONAL NETWORK NEWS/
0533	STATION ANNOUNCEMENT	1500	RADIO THEATRE (Rept. Thursday 1830)	0715	NEWS ANALYSIS
0533	NATIONAL ANTHEM/PLEDGE	1530	ZONAL NEWS/COMMENTARIES		EXPRESS NIGERIANA - PART III
0536	FREQUENCY ANNOUNCEMENT & PROG. SUMMARY	1645	NEME YE SAMUEL UKOCHIO - Fun, Tibits (With Samuel Ukocho)	0800	ZONAL NEWS SUMMARY IN ENGLISH
0540	FAMILY PRAYERS	1555	THE CRITIC (Rept. Mon. 1403)	0803	YOU AND THE LAW (From Sun. 1103)
0555	INSTRUMENTAL MUSIC/O.F.N. LANGS.	1600	NATIONAL NETWORK NEWS	0815	BRIGA (MUSIC FROM THE STATES OF ENUGU ZONE)
0800	THOUGHT FOR THE DAY (Rept. 0655)	1610	PROGRAMME SUMMARY-DCA	0900	NEWS SUMMARY IN THE ZONAL LANGS. - EFIK, IGBO IZON, TIV.
0803	ORGAN MUSIC	1615	SCHOOLS CHALLENGE (Rept. Thursday 2130)	0920	HIGHLIFE TIME
0815	LIFT UP YOUR HEART	1645	CHILDRENS OPINION (From Sat. 1045)	1000	WORLD BRIEFS
0830	ZONAL NEWS IN ENGLISH	1700	NEWS/EDITORIALS IN EFIK/IGBO	1003	ZOLIANU EGWJ - MUSIC PROGRAMME IN IGBO
0840	THE WEEK AHEAD (Rept. Sunday, 12.45 p.m.) <i>is preview of some progrs. in the coming week</i>	1730	KNOW YOUR NEIGHBOUR/TALKING POINT (Rept. Monday, 1830)	1030	OUR KIND OF MUSIC (LANGS) (Rept. Tues. 1930)
0655	THOUGHT FOR THE DAY (From 0800)	1800	NEWS/EDITORIALS IN IZON/TIV	1100	NEWS SUMMARY
0700	NATIONAL NETWORK NEWS/NEWS ANALYSIS	1830	HELLO YOUNG PEOPLE (Rept. Thursday 1215)	1103	MUSIC WHILE YOU WORK
0715	LETS WORSHIP	1900	THE WORLD AT ONE (Translations In Efik/igbo/izon/Tiv)	1130	MATTERS OF THE MOMENT (EFIK/IGBO) (Rept. Tues. 2215)
0800	ZONAL NEWS SUMMARY (English)	1930	WOMEN'S HALF HOUR (From Sat. 0830)	1200	ZONAL NEWS IN ENGLISH
0803	OZI EKENE - presented by Linda Menakaya	2000	ZONAL NEWS IN ENGLISH/COMMENTARIES	1210	MUSIC AFRICANA
0900	ZONAL NEWS SUMMARY (EFIK, IGBO, IZON, TIV)	2015	THE CRITIC (Rept. Mon. 1405)	1310	YE IKULE ME - REQUEST IN IZON
0920	TRADITIONAL MUSIC (BENUE)	2020	SUNDAY NIGHT SERVICE	1400	EDITORIAL REVIEW
0930	ARTISTE OF THE WEEK (Rept. Friday 1330) <i>(spotlights music artistes from Nigeria)</i>	2100	NEWS SUMMARY	1403	THE CRITIC (From 2015 Sun.)
1000	WORLD BRIEFS - A review of some world news	2103	TRADITIONAL MUSIC (CROSS RIVERS)	1410	TRADITIONAL MUSIC (ANAMBRA)
1003	THE HYMNS WE LOVE	2130	COMMUNITY HYMN SINGING	1430	INUMBE DRAMA IN TIV/HIGHLIFE TIME (Rept. Wed. 1430)
1030	IGBO PLAY (Rept. Wednesday 2230)	2200	NATIONAL NETWORK NEWS/ANALYSIS	1500	WORLD BRIEFS
1100	NEWS SUMMARY	2215	MEET F.R.C.N. CHOIR (Rept. Wed. 2130)	1503	TRADITIONAL MUSIC (IMO)
1103	YOU AND THE LAW (Rept. Mon 0803)	2230	SPORTS MAGAZINE (Rept. Mon. 2130)	1515	CHILDREN'S QUIZ TIME (Rept. Wed. 1545) <i>General Knowledge Test for under Twelves</i>
1115	CHORAL SINGING (Rept. Thursday 0845)	2300	NEWS SUMMARY	1530	ZONAL NEWS/COMMENTARIES IN ENGLISH
1130	20 QUESTIONS (Rept. Tuesday 2130) (Radio parlour game)	2305	SUNDAY SERENADE - A PROGRAMME OF SOFT, LIGHT AND SWEET MUSIC TO PUT ONE TO SLEEP	1545	KIKYAUUMANYE (Rept. Wed. 1315) (Tiv Prog. for Children)
1200	ZONAL NEWS IN ENGLISH	2350	THE EPILOGUE	1600	NATIONAL NETWORK NEWS
1210	PREACHERMAN'S SHOW (From 22.15 Sat.)	0000	NEWS AT MIDNIGHT	1610	PROGRAMME PROMO
1245	THE WEEK AHEAD (From Sun 0840)	0003	CLOSE DOWN/NATIONAL ANTHEM/THE PLEDGE	1615	WHAT DO YOU WANT (LIBRARY INTRODUCES NEWS DISCS)
1300	THE WORLD AT ONE			1630	TOWARDS CIVIL RULE (Rept. Wed. 0845)
1310	SUNDAY REQUEST			1645	POETRY TIME (Rept. Friday, 1545)
1400	NEWS SUMMARY			1700	NEWS EDITORIALS IN EFIK/IGBO

MONDAYS:

0530	CALL SIGN	0530	CONCERT MUSIC
0533	STATION ANNOUNCEMENT	0533	RADIO THEATRE (Rept. Thursday 1830)
0533	NATIONAL ANTHEM/PLEDGE	0533	ZONAL NEWS/COMMENTARIES
0535	FREQUENCY ANNOUNCEMENT/PROG. SUMMARY	0535	NEME YE SAMUEL UKOCHIO - Fun, Tibits (With Samuel Ukocho)
0545	FAMILY PRAYERS	0545	THE CRITIC (Rept. Mon. 1403)
0555	INST. MUSIC/OFN (LANGS.)	0555	NATIONAL NETWORK NEWS
0600	THOUGHT FOR THE DAY (Rept. 0657)	0600	PROGRAMME SUMMARY-DCA
0603	EXPRESS NIGERIANA - PART I	0600	SCHOOLS CHALLENGE (Rept. Thursday 2130)
0630	ZONAL NEWS SUMMARY IN ENGLISH	0603	CHILDRENS OPINION (From Sat. 1045)
0640	EXPRESS NIGERIANA - PART II	0603	NEWS/EDITORIALS IN EFIK/IGBO
0657	THOUGHT FOR THE DAY (From	0603	KNOW YOUR NEIGHBOUR/TALKING POINT (Rept. Monday, 1830)
		0630	HELLO YOUNG PEOPLE (Rept. Thursday 1215)
		0630	THE WORLD AT ONE (Translations In Efik/igbo/izon/Tiv)
		0630	WOMEN'S HALF HOUR (From Sat. 0830)
		0630	ZONAL NEWS IN ENGLISH/COMMENTARIES
		0630	THE CRITIC (Rept. Mon. 1405)
		0630	SUNDAY NIGHT SERVICE
		0630	NEWS SUMMARY
		0630	TRADITIONAL MUSIC (CROSS RIVERS)
		0630	COMMUNITY HYMN SINGING
		0630	NATIONAL NETWORK NEWS/ANALYSIS
		0630	MEET F.R.C.N. CHOIR (Rept. Wed. 2130)
		0630	SPORTS MAGAZINE (Rept. Mon. 2130)
		0630	NEWS SUMMARY
		0630	SUNDAY SERENADE - A PROGRAMME OF SOFT, LIGHT AND SWEET MUSIC TO PUT ONE TO SLEEP
		0630	THE EPILOGUE
		0630	NEWS AT MIDNIGHT
		0630	CLOSE DOWN/NATIONAL ANTHEM/THE PLEDGE



FRCN: LAGOS

PROGRAMME SCHEDULE

MF 1088 KHz - 276 metres
Short-Wave 4.990MHz - 60 metre band
FM 92.936MHz

0530 - 0005 hrs
0530 - 0005 hrs
0530 - 0005 hrs

Time	Programme	Time	Programme	Time	Programme
05.30	DRUM SIGNAL	18.03	SPOTLIGHT (From: 07.15)		
05.33	STATION ANNOUNCEMENT	18.06	LET'S GO FARMING	06.45	GANDU STREET (From: Sun. 10.15 & Rpt. Sat. 10.45)
05.33.30	NATIONAL ANTHEM	18.13	FORCES CALLING		THE NEWS
05.34	NATIONAL PLEDGE	18.00	NEWS PANORAMA	10.00	PROGRAMME PROMO
05.34.30	FREQUENCY ANNOUNCEMENT	19.30	THE 'MINSTEL' (Rpt. Thurs. 08.30)	10.10	(From: Sun. 09.15)
05.35	PROGRAMME SUMMARY	19.45	MAKING THE MAN (From: Sun. 18.45)	10.15	EDUCATIONAL SERVICE
05.40	FAMILY PRAYERS	20.00	NEWS ON THE HOUR	11.00	NEWS ON THE HOUR
05.50	READING FROM THE HOLY QURAN	20.03	TOMORROW ON FRCN. LAGOS/PUBLIC SERVICE ANNOUNCEMENTS	11.03	EDUCATIONAL SERVICE
06.00	NEWS AT DAWN	20.15	EDUCATIONAL SERVICE	12.00	NEWS ON THE HOUR
06.03	FROM THE NIGERIAN EDITORIALS (Rpt. 13.10)	20.30	TOWARDS CIVIL RULE	12.03	EDUCATIONAL SERVICE
06.08	MOMENT FOR THOUGHT (Rpt. 06.56 & 21.03)	20.45	ANNOUNCER'S CHOICE	12.30	MID-DAY RHYTHMS
06.11	ITS A DATE WITH TOYIN COKER	21.00	NEWS ON THE HOUR	13.00	THE NEWS
06.56	MOMENT FOR THOUGHT (Rpt. 21.03)	21.03	MOMENT FOR THOUGHT (From 06.56)	13.10	FROM THE NIGERIAN EDITORIALS A TO Z (From: Sun. 09.15)
07.00	NETWORK NEWS	21.05	PROGRAMME NEWS	13.45	STARS IN THE MAKING (From: Sun. 21.06)
07.10	NEWS ANALYSIS (From: Mon. 22.10)	21.08	FOR MUSLIMS	14.00	NEWS ON THE HOUR
07.15	SPOTLIGHT (Rpt. 18.03)	21.20	EVENING WORSHIP	14.03	HOME MAKERS SPECIAL (From: Mon. 14.03)
07.20	ITS A DATE WITH TOYIN COKER (Cont'd.)	21.30	PLAY OF THE WEEK (From: Sun. 15.15)	14.45	KIDDIES GET TOGETHER (Rpt. Sat. 10.45)
08.00	NEWS ON THE HOUR	22.00	NETWORK NEWS	15.00	NEWS ON THE HOUR
08.03	CULTURAL MUSIC	22.10	NEWS ANALYSIS (Rpt. Wed. 07.10)	15.03	KALEIDOSCOPE
08.15	MR. & MRS. N.J./BELIEVE IT OR NOT (From: Mon. 13.45)	22.15	EDUCATIONAL SERVICE	16.00	NETWORK NEWS
08.30	TRANSITION (Rpt. 20.45)	22.30	LEGACY/CULTURAL FORUM (Rpt. Thurs. 18.15)	16.10	EDUCATIONAL SERVICE
08.45	EDUCATIONAL SERVICE	23.00	NEWS ON THE HOUR	16.25	KALEIDOSCOPE
09.00	NEWS ON THE HOUR	23.03	JUST JAZZ	17.00	TRUE TO LIFE (From: Mon. 23.03 & Rpt. Thurs. 08.15)
09.03	MIXED GRILL	00.00	NEWS AT MID-NIGHT	17.03	TWELVE MINUTES WITH (From: Mon. 17.48)
09.45	OUR MUSICAL INSTRUMENTS (From: Sun. 19.45)	00.05	DAY IS DCNE	17.08	FEMININE WORLD (Rpt. Thurs. 21.30)
10.00	THE NEWS	00.09	CLOSE DOWN	17.30	NEWS ON THE HOUR
10.10	PROGRAMME PROMO (Play of the Week)	00.09.30	NATIONAL PLEDGE AND ANTHEM	18.00	SPOTLIGHT (From: 07.15)
10.15	EDUCATIONAL SERVICE			18.08	LET'S GO FARMING
11.00	NEWS ON THE HOUR			18.15	FOLK MUSIC
11.03	EDUCATIONAL SERVICE			18.30	WINDOW ON THE WORLD (Rpt. 22.30)
12.00	NEWS ON THE HOUR			18.45	ANNOUNCERS CHOICE
12.03	EDUCATIONAL SERVICE			19.00	NEWS PANORAMA
12.30	MUSIC IN PERSPECTIVE			19.30	TALKING SPORTS (From: Tues. 17.30)
13.00	THE NEWS			20.00	NEWS ON THE HOUR
13.10	FROM THE NIGERIAN EDITORIALS (From: 06.03)			20.03	TOMORROW ON FRCN. LAGOS/PUBLIC SERVICE ANNOUNCEMENTS
13.15	SCHOOLS CHALLENGE (From: 06.03)			20.15	EDUCATIONAL SERVICE
13.45	IN A LIGHTER MOOD/ITS A SMALL WORLD (From: Sun. 20.03)			20.30	RECORDS FROM THE RACKS
14.00	NEWS ON THE HOUR			21.00	NEWS ON THE HOUR
14.03	HOME MAKERS SPECIAL (Rpt. Thurs. 14.03)			21.03	MOMENT FOR THOUGHT (From: 06.56)
15.00	NEWS ON THE HOUR			21.05	PROGRAMME NEWS
15.03	KALEIDOSCOPE			21.08	FOR MUSLIMS
16.00	NETWORK NEWS			21.20	EVENING WORSHIP
16.10	EDUCATIONAL SERVICE			21.30	PROGRESS REPORT (Rpt. Fri. 17.30)
16.25	FOR CHILDREN (Rpt. Thurs. 16.25)			22.00	NETWORK NEWS
16.40	KALEIDOSCOPE			22.10	NEWS ANALYSIS (Rpt. Thurs. 07.10)
17.00	NEWS ON THE HOUR			22.15	EDUCATIONAL SERVICE
17.03	JUST A MINUTE (Rpt. Fri. 17.03)			22.30	WINDOW ON THE WORLD (From: 18.30)
17.30	TALKING SPORTS (Rpt. Wed. 19.30)			22.45	NIGERIAN RHYTHMS
18.00	NEWS ON THE HOUR			23.00	NEWS ON THE HOUR
				23.03	MID-WEEK CONCERT
				00.00	NEWS AT MID-NIGHT

FRCN:LAGOS

PROGRAMME SCHEDULE

MF 1088 KH -- 276 metres
Short-Wave 4.990MHz -- 60 metre band
FM 92.936MHz

0530 -- 0005 hrs
0530 -- 0005 hrs
0530 -- 0005 hrs

00.05	DAY IS DONE	18.15	LEGACY/CULTURAL FORUM	08.45	EDUCATIONAL SERVICE
00.08	CLOSE DOWN		(From: Tues. 22.30)	09.00	NEWS ON THE HOUR
00.09.30	NATIONAL PLEDGE AND ANTHEM	18.45 18.00 19.30	CHOICE VOICES NEWS PANORAMA MUSICAL PROFILE (Rpt. Sat. 15.30)	09.03	AFRO STARS
THURSDAYS:					
05.30	DRUM SIGNAL	20.00	NEWS ON THE HOUR	10.10	PROGRAMME PROMO (Sports)
05.33	STATION ANNOUNCEMENT	20.03	TOMORROW ON FRCN, LAGOS/PUBLIC SERVICE ANNOUNCEMENTS	10.15	EDUCATIONAL SERVICE
05.33.30	NATIONAL ANTHEM			11.00	NEWS ON THE HOUR
05.34	NATIONAL PLEDGE	20.15	EDUCATIONAL SERVICE	11.03	EDUCATIONAL SERVICE
05.34.30	FREQUENCY ANNOUNCEMENT	20.30	MUSIC FROM THE STATES (Rpt. Sat. 14.45)	12.00	NEWS ON THE HOUR
05.35	PROGRAMME SUMMARY	20.45	FACTS AND FIGURES/OCTOBER LECTURES/ROAD SAFETY (From: Sun. 13.15)	12.03	EDUCATIONAL SERVICE
06.40	FAMILY PRAYERS			12.30	PRELUDE TO JUMAT SERVICE
06.50	READING FROM THE HOLY QURAN	21.00	NEWS ON THE HOUR	13.00	THE NEWS
08.00	NEWS AT DAWN	21.03	MOMENT FOR THOUGHT (From: 08.58)	13.10	2ND CALL TO PRAYER
08.03	FROM THE NIGERIAN EDITORIALS (Rpt. 13.10)	21.06	PROGRAMME NEWS	13.13	JUMAT SERVICE
08.08	MOMENT FOR THOUGHT (Rpt. 08.58 & 21.03)	21.08	FOR MUSLIMS	13.45	ANNOUNCER'S CHOICE
08.11	SWING WITH PETER 'O'	21.20	EVENING WORSHIP	14.00	NEWS ON THE HOUR
08.58	MOMENT FOR THOUGHT (Rpt. 21.03)	21.30	FEMININE WORLD (From: Wed. 17.30)	14.03	FROM THE NIGERIAN EDITORIALS (From: 06.03)
07.00	NETWORK NEWS	22.00	NETWORK NEWS	15.00	FOR SHOPPERS (Rpt. Sat. 09.03)
07.10	NEWS ANALYSIS (From: Wed. 22.10)	22.10	NEWS ANALYSIS (Rpt. Fri. 07.10)	15.03	NEWS ON THE HOUR
07.15	SPOTLIGHT (Rpt. 18.03)	22.15	EDUCATIONAL SERVICE	15.03	KALEIDOSCOPE
07.20	SWING WITH PETER 'O' (Cont'd)	22.30	JOIN THE BAND-WAGON (From: Sun. 11.30)	16.00	NETWORK NEWS
08.00	NEWS ON THE HOUR	23.00	NEWS ON THE HOUR	16.10	KALEIDOSCOPE (Cont'd.)
08.03	CULTURAL MUSIC	23.03	MEDITATION	17.00	NEWS ON THE HOUR
08.15	TRUE TO LIFE (From: Mon. 23.03 & Wed. 17.03)	23.18	MUSIC TO END THE DAY	17.03	JUST A MINUTE (From: Tues. 17.03)
08.30	THE MINSTREL	00.00	NEWS AT MID-NIGHT	17.30	PROGRESS REPORT (From: Wed. 21.30)
18.45	EDUCATIONAL SERVICE	00.05	DAYS IS DONE	18.00	NEWS ON THE HOUR
09.00	NEWS ON THE HOUR	00.09.30	CLOSE DOWN	18.03	SPOTLIGHT (From: 07.15)
09.03	POPULAR SOUNDS		NATIONAL PLEDGE AND ANTHEM	18.08	LET'S GO FARMING
10.00	THE NEWS			18.15	NIGERIAN RHYTHMS
10.10	PROGRAMME PROMO (Feminine World/For Children)			18.30	TWO OF A KIND (From: Wed. 08.15)
10.15	EDUCATIONAL SERVICE	05.30	DRUM SIGNAL	19.00	NEWS PANORAMA
11.00	NEWS ON THE HOUR	05.33	STATION ANNOUNCEMENT	19.30	THE CHURCH TODAY
11.03	EDUCATIONAL SERVICE	05.34	NATIONAL ANTHEM	20.00	NEWS ON THE HOUR
12.00	NEWS ON THE HOUR	05.34.30	NATIONAL PLEDGE	20.03	TOMORROW ON FRCN, LAGOS/LIGHT MUSIC/PUBLIC SERVICE ANNOUNCEMENTS
12.03	EDUCATIONAL SERVICE		FREQUENCY ANNOUNCEMENT	20.15	EDUCATIONAL SERVICE
12.30	MID-DAY RHYTHMS	05.35	PROGRAMME SUMMARY	20.30	SPORTS PREVIEW
13.00	THE NEWS	05.40	FAMILY PRAYERS	20.45	A DISC FOR YOU
13.10	FROM THE NIGERIAN EDITORIALS (From: 06.03)	05.50	READING FROM THE HOLY QURAN	20.50	EVENING WORSHIP
13.15	JUKE BOX	06.00	NEWS AT DAWN	21.00	NEWS ON THE HOUR
14.00	NEWS ON THE HOUR	06.03	FROM THE NIGERIAN EDITORIALS (Rpt. 14.03)	21.03	MOMENT FOR THOUGHT (From: 06.58)
14.03	HOME MAKERS SPECIAL (From: Tues. 14.03)	06.08	MOMENT FOR THOUGHT (Rpt. 06.58 & 21.03)	21.06	GOSPEL SONGS
15.00	NEWS ON THE HOUR	06.11	FRIDAY WITH FRANK OSHODI	21.30	EDUCATIONAL SERVICE
15.03	KALEIDOSCOPE	06.58	MOMENT FOR THOUGHT (Rpt. 21.03)	21.45	SPECIAL READING FROM THE HOLY QURAN
16.00	NETWORK NEWS	07.00	NETWORK NEWS	22.00	NETWORK NEWS
16.10	EDUCATIONAL SERVICE FOR CHILDREN (From: Tues. 16.25)	07.10	NEWS ANALYSIS (From: Thurs. 22.10)	22.10	NEWS ANALYSIS (Rpt. Sat. 07.10)
16.25		07.15	SPOTLIGHT (Rpt. 18.03)	22.15	EDUCATIONAL SERVICE
16.40	KALEIDOSCOPE (Cont'd.)	07.20	FRIDAY WITH FRANK OSHODI	22.30	THIS WEEK'S COMPOSER
17.00	NEWS ON THE HOUR	08.00	NEWS ON THE HOUR	23.00	NEWS ON THE HOUR
17.03	KALEIDOSCOPE (Cont'd.) (Social Music)	08.03	CULTURAL MUSIC	23.03	STRINGS
17.45	A CLOSER LOOK (Rpt. Sat. 18.15) (Featurette)	08.15	MYTHS AND LEGENDS (From: Mon, 19.30)	23.25	KHUTBA
18.00	NEWS ON THE HOUR			23.50	AL-AISH
18.03	SPOTLIGHT (From: 07.15)			00.00	NEWS AT MID-NIGHT
18.08	LET'S GO FARMING			00.05	CLOSE DOWN
				00.05.30	NATIONAL PLEDGE AND ANTHEM

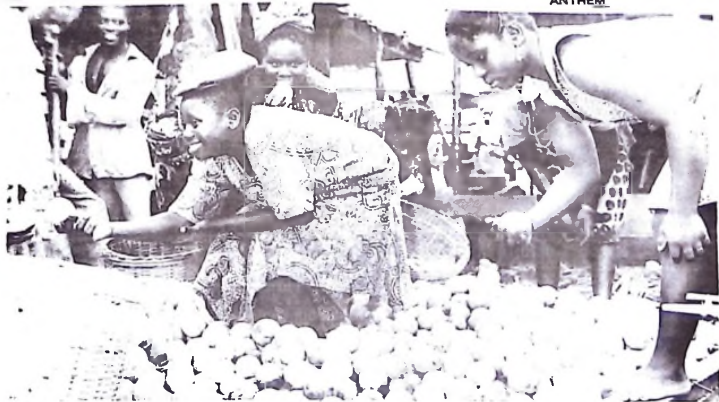
FRCN: LAGOS

PROGRAMME SCHEDULE

MF Short Wave
FM
10PS KH: - 276 metres
4.990MHz - 60 metre band
92.936MHz

0530 - 0005 hrs
0530 - 0005 hrs
0530 - 0005 hrs

SATURDAYS:		10.45	KIDDIES GET TOGETHER (From Wed. 14.45)	19.15	AFRICA THIS WEEK (From: 14.30)
05.30	DRUM SIGNAL	11.00	NEWS ON THE HOUR	19.30	VOICES
05.33	STATION ANNOUNCEMENT	11.03	MUSIC FROM OTHER LANDS	19.45	GANDU STREET (From: Sun. 10.15 & Wed. 09.45)
05.33.30	NATIONAL ANTHEM	11.30	YOUTH RENDEZVOUS (Rpt. Mon. 13.15)	20.00	NEWS ON THE HOUR
05.34	NATIONAL PLEDGE	12.00	NEWS ON THE HOUR	20.03	FRCN MAIL BAG (Rpt. Sun. 11.03)
05.34.30	FREQUENCY ANNOUNCEMENT	13.00	THE NEWS	20.30	MUSIC OF OUR AGE (From: Mon. 21.30)
05.35	PROGRAMME SUMMARY	13.10	FROM THE NIGERIAN EDITORIALS (From: 06.03)	20.45	TRANSITION (From: Tues. 08.30)
05.40	FAMILY PRAYERS	14.00	BREAK FROM BOOKS (Request Programme for Students)	21.00	NEWS ON THE HOUR
05.50	READING FROM THE HOLY QURAN	14.03	NEWS ON THE HOUR	21.03	MOMENT FOR THOUGHT (From: 06.56)
06.00	NEWS AT DAWN	14.03	STOCK MARKET REPORT (Rpt. Sun. 09.03)	21.06	A DISC FOR YOU
06.03	FROM THE NIGERIAN EDITORIALS (Rpt. 13.10)	14.10	BREAK FROM BOOKS (Part II)	21.10	WHAT THE PEOPLE SAY (Rpt. Sun. 19.15)
06.08	MOMENT FOR THOUGHT (Rpt. 06.56 & 21.03)	14.30	AFRICA THIS WEEK (Rpt. 19.15)	21.25	YOUTH AND ISLAM
06.11	COUNTRY-SIDE SPECIAL	14.45	MUSIC FROM OUR STATES (From: Thurs 20.30)	21.45	SOUL LIFT
06.56	MOMENT FOR THOUGHT (Rpt. 21.03)	15.00	NEWS ON THE HOUR	22.00	NETWORK NEWS
07.00	NETWORK NEWS	15.03	SATURDAY JUMP	22.10	NEWS ANALYSIS (Rpt. Sun. 07.10)
07.10	NEWS ANALYSIS (From: Fri. 22.10)	15.30	MUSICAL PROFILE (From: Thurs. 19.30)	22.15	ANNOUNCER'S CHOICE/ TAKE A HINT
07.15	LET'S GO FARMING	16.00	NETWORK NEWS	22.20	EVENING WORSHIP
07.20	COUNTRY-SIDE SPECIAL	16.10	A DISC FOR YOU	22.30	MUSICAL SHADES (From: Mon. 22.30)
08.00	NEWS ON THE HOUR	16.15	A CLOSER LOOK (From: Thurs. 17.45) (A Featurette)	23.00	NEWS ON THE HOUR
08.03	CULTURAL MUSIC	16.30	SPORTS PAVILION	23.03	CLUB HOUSE SPECIAL
08.15	JAMBOREE	18.00	TIME FOR HIGHLIFE	00.00	NEWS AT MID-NIGHT
08.05	CULTURAL MUSIC	18.30	THE NEWS	00.05	DAYS IS DONE
09.00	NEWS ON THE HOUR	19.10	NEWS ANALYSIS (From: Fri. 22.10)	00.09	CLOSE DOWN
09.03	FOR SHOPPERS (From: Fri. 14.08)	19.30		00.09.30	NATIONAL PLEDGE AND ANTHEM
10.00	THE NEWS				
10.10	PROGRAMME PROMO (Sports)				
10.15	HIGHLIFE MUSIC				



A fruit stand in a Lagos market. Tune in to FRCN Lagos for shopping hints in the programmes, FOR SHOPPERS, broadcast Fridays at 2.08 p.m. and Saturdays at 9.30 a.m.

FRCN: ENUGU

PROGRAMME SCHEDULE

1615	DOCTORS CASE BOOK (From Tues 1830)	1130	THE WEEK IN REVIEW (Rept Sat. 2130)	1830	WEEKEND MELODY
1645	AYAKATA - (From Thurs. 0830)	1200	ZONAL NEWS IN ENGLISH	1900	THE WORLD AT ONE - TRANSLATIONS IN EFIK/IGBO/IZON/TIV
1700	ZONAL NEWS TRANSLATIONS EDITORIALS (EFIK/IGBO)	1210	IHWA-I-MBASUBEV - REQUEST FOR FARMERS IN TIV	1930	VIEW POINT (From Thurs 1930)
1730	IMONGO (TIV :MAG) (From Thurs 2030)	1300	THE WORLD AT ONE	2000	ZONAL NEWS IN ENGLISH
1800	NEWS/EDITORIALS (IZON/TIV)	1303	EDITORIAL REVIEW	2010	TOMORROW ON FRCN
1830	PERSONALITY SPOT (Rept. Sat. 1315)	1308	MUSIC BREAK	2015	ANNOUNCER'S CHOICE
1900	THE WORLD AT ONE - TRANSLATIONS IN EFIK/IGBO/IZON/TIV	1315	PERSONALITY SPOT (From Fri. 1830)	2020	FOCUS ON COMMUNITY DEV. (LANGS) (From Wed. 1230)
1930	IKPO NA DOU (From 1130)	1345	MEET THE MINSTRELS (From Thurs 2248)	2100	NEWS SUMMARY IN ENGLISH
2000	ZONAL NEWS/COMMENTARIES IN ENGLISH	1400	NEWS EDITORIALS (EFIK/IGBO)	2103	ORGAN MUSIC
2015	MATTERS OF THE MOMENT (TIV/IZON From Wed. 1130)	1430	NEWS HIGHLIGHTS	2115	EVENING WORSHIP
2045	CHRISTIAN COMMENTS	1445	CHORAL SINGING (From Thurs 0845)	2130	THE WEEK IN REVIEW (From 11.30 a.m.)
2100	NEWS SUMMARY	1500	NEWS EDITORIALS (IZON/TIV)	2200	NATIONAL NETWORK NEWS /ANALYSIS
2103	SPORTS MAIN POINTS	1530	ZONAL NEWS IN ENGLISH	2215	PREACHERMAN'S SHOW (Rept. Sun 1210)
2115	EVENING WORSHIP	1540	MUSIC BRIDGE	2250	MUSIC TILL ELEVEN
2130	HERITAGE (From Wed. 1730)	1545	SPORTS MAIN POINTS (From Fri. 2103)	2300	NEWS SUMMARY
2200	NATIONAL NETWORK NEWS/ ANALYSIS	1600	NATIONAL NETWORK NEWS	2303	SATURDAY NIGHT TIS MUSIC NIGHT (LIVE BAND)
2215	THE BIBLE TODAY	1610	PROG. PROMO	0000	NEWS AT MIDNIGHT
2230	IZU EZUE (From Fri. 0930)	1615	SPORTING PERSONALITY (From Tues. 1545)	0005	CLOSE DOWN/NATIONAL ANTHEM/THE PLEDGE
2300	NEWS SUMMARY	1630	SPORTS PAVILLION		
2303	MUSIC TO END THE DAY				
0000	NEWS AT MIDNIGHT				
0003	CLOSE DOWN/NATIONAL ANTHEM/THE PLEDGE				

SATURDAYS:

0530	CALL SIGN
0533	STATION ANNOUNCEMENT
0533	NATIONAL ANTHEM/PLEDGE
34	FAMILY PRAYERS
0555	INSTRUMENTAL MUSIC/OFN LANGS
0600	THOUGHT FOR THE DAY (Rept. 0555)
0603	DAY DON BREAK O - PART I
0630	ZONAL NEWS IN ENGLISH
0640	DAY DON BREAK O - PART II
0700	NATIONAL NETWORK NEWS/ ANALYSIS
0715	DAY DON BREAK O - PART III
0800	ZONAL NEWS SUMMARY (ENGLISH)
0903	DRUMS AND VOICES (From Tues 1603)
0830	WOMEN'S HALF HOUR (Rept. Sun. 1930)
0900	ZONAL NEWS SUMMARY TRANSLATIONS (EFIK, IGBO, IZON, TIV)
0920	MUSIC BREAK
0930	MAIN FEATURE/MATTERS OF THE MOMENT/FOCUS (From Wed. 1930)
1000	WORLD BRIEFS
1003	EKOM DO (REQUEST IN EFIK)
1045	CHILDREN'S OPINION (From Sun. 1645)
1100	NEWS SUMMARY
1103	WEEKEND VIB RATIONS



James Egbuchulam chats with Papa Rufus Thomas (of the Funky Chicken fame), the World's Oldest Teenager, in PERSONALITY SPOT on FRCN, Enugu.

The programme is on the air Fridays at 6.30 p.m. and on Saturdays at 1.15 p.m.

RADIO BENDEL

PROGRAMME SCHEDULE

773KHz - 388 metres
4.932MHz - 60 metres

0530 - 0005 hrs

SUNDAYS:

05.30	DRUM SIGNAL
05.33	STATION ANNOUNCEMENT
05.33.30	NATIONAL ANTHEM
05.34	NATIONAL PLEDGE
05.34.30	FREQUENCY ANNOUNCEMENT
05.35	PROGRAMME SUMMARY
05.40	FAMILY PRAYERS
05.50	READING FROM THE HOLY QURAN
06.00	NEWS AT DAWN (State)
06.03	THOUGHT FOR THE DAY
06.05	MORNING MELODIES
06.30	THE WEEK AHEAD
06.45	CHRISTIAN OUTLOOK/SUNDAY SCHOOL*
	*(Last Sunday of the month)
07.10	ORGAN MUSIC
07.15	LET'S WORSHIP
08.00	RADIO CHOIR (Music Dept.)
08.15	HERITAGE
08.30	WOMEN'S CORNER
09.00	SPIRITUALS (Dixon)
09.15	VIEW POINTS
09.45	ANNOUNCER'S CHOICE
09.55	ATTENTION PLEASE
10.00	DROP US A LINE
10.30	DRAMA
11.00	NEWS IN BRIEF
11.03	BENDEL MUSIC ON RECORDS
11.30	RADIO VARIETY SHOW (V. & L.E.)
12.00	NEWS IN BRIEF
12.03	FAMILY FAVOURITE (COMM.)
13.10	A LOOK AT LIFE
13.15	CHILDREN'S WORLD (Rpt from Thur. 16.10 Hrs.)
13.30	MUSIC GRILL
15.00	SOCIAL MUSIC (Music Dept.)
15.20	PERSONAL PAID ANNOUNCEMENT
15.30	FEATURES
16.10	INTERLUDE/JINGLES
16.15	SCHOOLS CHALLENGE
16.45	INTERLUDE (DCA)
17.00	MUSIC OF OUR STATE
17.30	DRAMA IN LANGUAGES (Rpt. Mon. @ 22.30)
18.00	PERSONAL PAID ANNOUNCEMENT
18.10	MUSIC BREAK
18.30	DELTA PANORAMA
19.10	MUSIC INTERLUDE
19.15	THE WEEK IN RETROSPECT (Features)
19.45	TOWARDS BETTER FARMING
20.00	NEWS IN BRIEF
20.03	LIVE INSTRUMENTAL MUSIC
20.15	SUNDAY NIGHT SERVICE
21.00	OUR SPORTING REPORT
21.30	COMMUNITY HYMN SINGING
22.10	THOUGHT FOR THE DAY
22.15	CALLING NIGERIA
22.45	CHORAL SINGING
23.00	NEWS FROM THE CLASSICS
00.00	NEWS AT MIDNIGHT
00.05	CLOSING ANNOUNCEMENT

00.05.30 NATIONAL PLEDGE & ANTHEM

MONDAYS:

05.30	DRUM SIGNAL
05.33	STATION ANNOUNCEMENT
05.33.30	NATIONAL ANTHEM
05.34	NATIONAL PLEDGE
05.34.30	FREQUENCY ANNOUNCEMENT
05.35	PROGRAMME SUMMARY
05.40	FAMILY PRAYERS
05.50	READING FROM THE HOLY QURAN
06.00	NEWS AT DAWN
06.03	THOUGHT FOR THE DAY
06.05	TODAY'S SHOW (COMM.)
06.05	THOUGHT FOR THE DAY
06.56	NIGERIAN BEATS (COMM.)
07.10	THE WEEK IN RETROSPECT
08.00	THE CHOICE IS MINE
08.30	REGGAE TIME (COMM.)
09.00	RITUAL MUSIC (Culture)
09.40	PERSONAL PAID ANNOUNCEMENT
09.55	CEMENT
10.00	FOR YOU AT HOME
11.00	NEWS IN BRIEF
11.03	MY TASTE IN MUSIC
11.15	ETSAK MUSIC
11.30	ISOKO MAGAZINE
12.00	NEWS IN BRIEF (State)
12.03	MID-DAY MELODIES (COMM.)
13.15	MERRY GO ROUND (COMM.)
14.00	NEWS IN BRIEF
14.03	MERRY GO ROUND (COMM.)
15.00	HOME MADE SOUNDS (COMM.)
15.20	PERSONAL PAID ANNOUNCEMENT
15.30	STATE NEWS IN ENGLISH, EDO & IGBO
16.10	INTERLUDE/JINGLES
16.15	THIS WEEK'S GUEST/PEOPLE'S VIEWS
16.30	DELTA PANORAMA (Rpt. from Sun. 10.30 Hrs. (Features))
17.00	STATE NEWS IN ENGLISH, EZON & ISOKO (Editor)
17.30	MUSIC AFRICANA (COMM.)
18.00	PERSONAL PAID ANNOUNCEMENT
18.10	LISTENERS CHOICE (COMM.)
19.30	DEITIES OF OUR LAND
19.45	MUSIC INTERLUDE
20.00	STATE NEWS IN ENGLISH, ITSEKIRI & URHOB
20.30	IBOTA (Edo Half Hour Magazine)
21.00	SHORT STORY IN DIALECT (Edo/Igbo)
21.15	EVENING WORSHIP
21.25	MIXED MUSIC (Music Dept.)
22.10	THOUGHT FOR THE DAY
22.15	MUSIC INTERLUDE
22.30	DRAMA IN LANGUAGES (one in six)
23.00	MESSAGE OF ALLAH
00.00	MAGIC MOMENT
00.00	NEWS AT MIDNIGHT (State)
00.05	CLOSING ANNOUNCEMENT
00.05.30	NATIONAL PLEDGE/ANTHEM

TUESDAYS:

05.30	DRUM SIGNAL
05.33	STATION ANNOUNCEMENT
05.33.30	NATIONAL ANTHEM
05.34	NATIONAL PLEDGE
05.34.30	FREQUENCY ANNOUNCEMENT
05.35	PROGRAMME SUMMARY
05.40	FAMILY PRAYERS
05.50	READING FROM THE HOLY QURAN
06.00	NEWS AT DAWN (State)
06.03	THOUGHT FOR THE DAY
06.05	YOURS FOR THE ASKING (COMM.)
06.56	THOUGHT FOR THE DAY
07.10	NIGERIAN BEATS
08.00	NBENEN/IGARRA REQUEST
08.45	MY TASTE IN MUSIC
09.00	SOUL TIME (COMM.)
09.55	PERSONAL PAID ANNOUNCEMENT
10.00	URHOB MUSIC
10.30	EDO MAGAZINE
11.00	NEWS IN BRIEF (State)
11.03	THE PLEASURE IS MINE
11.15	IGBO MUSIC
11.30	EZON MAGAZINE
12.00	NEWS IN BRIEF (State)
12.03	MID-DAY MELODIES (COMM.)
13.15	MERRY GO ROUND (COMM.)
14.00	NEWS IN BRIEF (State)
14.03	MERRY GO ROUND (COMM.)
15.00	HOME MADE SOUND (COMM.)
15.20	PERSONAL PAID ANNOUNCEMENT
15.30	STATE NEWS IN ENGLISH, EDO & IGBO
16.10	TEMPOS IN HIGHLIFE (COMM.)
17.00	STATE NEWS IN ENGLISH, EZON & ISOKO
17.30	CONGO WAY (COMM.)
18.00	PERSONAL PAID ANNOUNCEMENT
18.10	EDO/ESAN REQUEST (COMM.)
19.30	BUSINESS WORLD
19.45	ANNOUNCER'S CHOICE
20.00	STATE NEWS IN ENGLISH, INTSEKIRI & URHOB
20.30	EKHA RAVBO DICTO (URHOB SHR. MAGAZINE)
21.00	SHORT STORY IN DIALECT (ISOKO/EZON)
21.15	INTERLUDE
21.20	EVENING WORSHIP (EDO)
21.30	AKUGBE
22.10	THOUGHT FOR THE DAY
22.13	ANNOUNCER'S CHOICE
22.30	YOUTH CARNIVAL (RPT. SAT. 11.30 HRS.)
23.00	MESSAGE OF ALLAH
23.10	JAZZ CLUB
00.00	NEWS AT MIDNIGHT (State)
00.05	CLOSING ANNOUNCEMENT
00.05.30	NATIONAL PLEDGE/ANTHEM

RADIO BENDEL

PROGRAMME SCHEDULE

773KHz - 388 metres
4.932MHz - 60 metres

0530 - 0005 hrs

WEDNESDAYS:

05.30	DRUM SIGNAL
05.33	STATION ANNOUNCEMENT
05.33.30	NATIONAL ANTHEM
05.34	NATIONAL PLEDGE
05.34.30	FREQUENCY ANNOUNCEMENT
05.35	PROGRAMME SUMMARY
05.40	FAMILY PRAYERS
05.50	READING FROM THE HOLY QURAN
06.00	NEWS AT DAWN (STATE)
06.05	THOUGHT FOR THE DAY
06.10	TODAY'S SHOW (COMM.)
06.56	THOUGHT FOR THE DAY
07.10	NIGERIAN BEATS (COMM.)
08.00	FOR YOU AT HOME (COMM.)
08.45	LIGHT MUSIC FROM THE NETHERLAND
09.00	OKPAMERI/OSOSO REQUEST (COMM.)
09.55	PERSONAL PAID ANNOUNCEMENT
10.00	ITSEKIRI MUSIC
10.30	CHORAL ECHOES
11.00	NEWS IN BRIEF (State)
11.03	SHOPPING GUIDE
11.30	AKUGBE
12.00	NEWS IN BRIEF (State)
12.03	MID-DAY MELODIES (COMM.)
13.15	MERRY GO ROUND (COMM.)
14.00	NEWS IN BRIEF (State)
14.03	MERRY GO ROUND (COMM.)
15.00	HOME MADE SOUNDS (COMM.)
15.20	PERSONAL PAID ANNOUNCEMENT
15.30	STATE NEWS IN ENGLISH, EDO & IGBO
16.10	INTERLUDE/JINGLES
16.15	OUR SPORTING REPORT
16.30	THE PLEASURE IS MINE
16.45	TUNES FROM BOWO
17.00	STATE NEWS IN ENGLISH, EZON & ISOKO
17.30	IGBO/OKA REQUEST (COMM.)
18.00	PERSONAL PAID ANNOUNCEMENT
18.10	HIGHLIFE TIME (Music Dept.) (COMM.)
18.45	TOWARDS BETTER FARMING (RPT. FROM SUN.)
19.30	YOU AND THE ARTS (RPT. 08.45 HRS.)
19.45	MUSIC BREAK (DCA)
20.00	STATE NEWS IN ENGLISH, ITSEKIRI & URHOB
20.30	AJA MO KIN AGHAN (Itsekiri 'Shr. Magazine)
21.00	SHORT STORY IN DIALECT (Itsekiri/Urhobo)
21.15	EVENING WORSHIP
21.30	FEATURES (RPT. FROM SUN-DAY 15.30)
22.10	THOUGHT FOR THE DAY (RPT. FROM 06.05)
22.13	ANNOUNCER'S CHOICE
22.30	MUSIC OF OUR STATE
23.00	MESSAGE OF ALLAH
23.10	MAGIC MOMENT

00.00	NEWS AT MIDNIGHT (State)	08.45	MY TASTE IN MUSIC
00.05	CLOSING ANNOUNCEMENT	09.00	JUJU MUSIC (COMM.)
00.05.30	NATIONAL/PLEDGE/ANTHEM	09.55	PERSONAL PAID ANNOUNCEMENT

THURSDAYS:

05.30	DRUM SIGNAL	11.00	MY TASTE IN MUSIC (DCA)
05.33	STATION ANNOUNCEMENT	10.15	HOSPITAL REQUEST
05.33.30	NATIONAL ANTHEM	11.00	NEWS IN BRIEF (State)
05.34	NATIONAL PLEDGE	11.03	ESAN MUSIC
05.34.30	FREQUENCY ANNOUNCEMENT	11.30	URHOB MAGAZINE
05.35	PROGRAMME SUMMARY	12.00	NEWS IN BRIEF (State)
05.40	FAMILY PRAYERS	12.03	MID-DAY MELODIES (COMM.)
05.50	READING FROM THE HOLY QURAN	13.13	MERRY GO ROUND (COMM.)
06.00	NEWS AT DAWN (State)	14.00	NEWS IN BRIEF (State)
06.05	THOUGHT FOR THE DAY	14.03	MERRY GO ROUND (COMM.)
06.10	YOURS FOR THE ASKING (COMM.)	15.00	HOME MADE SOUNDS (COMM.)
06.56	THOUGHT FOR THE DAY	15.20	PERSONAL PAID ANNOUNCEMENT
07.00	NIGERIAN BEATS (COMM.)	15.30	STATE NEWS IN ENGLISH, EDO & IGBO
08.00	EZON/ITSEKIRI REQUEST (COMM.)	16.10	A LOOK AT LIFE (RPT. FROM SUN. 13.10HRS.)
		16.15	CHILDREN'S WORLD (RPT. SUN. 13.30)
		16.30	MIXED MUSIC

RECORD REQUEST COUPON

Cut this Coupon and mail to The Producer

.....
(title of appropriate programme)

.....
(Name of FRCN Station)

Please play

By

For (Name and Address)

Date Required

Occasion

Sender (Name and Address)

RADIO BENDEL

PROGRAMME SCHEDULE

773KHz - 388 metres
4.932MHz - 80 metres

0530 - 0005 hrs

17.00	STATE NEWS IN ENGLISH, EZON & ISOKO	15.30	STATE NEWS IN ENGLISH, EDO & IGBO	06.03	THOUGHT FOR THE DAY
17.30	ETSAKO/OWAN REQUEST (COMM.)	16.10	TALKING SPORTS	06.05	WEEKEND SPECIAL (COMM.)
18.00	PERSONAL PAID ANNOUNCEMENT	16.15	VIEW POINT	06.56	THOUGHT FOR THE DAY
18.10	HOME MAKERS SPECIAL (COMM.)	16.45	MUSIC INTERLUDE	07.10	WEEKEND SPECIAL (COMM.)
19.30	MEET THE ARTIST	17.00	STATE NEWS IN ENGLISH	08.00	DROP US A LINE
19.45	MUSIC BREAK (DCA)	17.30	EZON & ISOKO	08.30	YOU AND THE ARTS (RPT. FROM WED. 19.30HRS.)
20.00	STATE NEWS IN ENGLISH, ITSEKIRI & URHOB	18.00	MAKE WE COME TOGEDER (COMM.)	09.15	SOUL BREAK
20.30	THIS WEEK'S GUEST/ FEEL'S VIEWS (FROM MON. 16.15 HRS.)	18.10	PERSONAL PAID ANNOUNCEMENT	09.30	PORTRAIT OF THE PAST
20.45	MEDITATION	19.30	URHOB/ISOKO REQUEST (COMM.)	09.45	ADVENTURES OF THE PAST
21.00	SHORT STORY IN DIALECT	19.30	BUSINESS WORLD (RPT. FROM TUE. 19.30)	10.00	MI - ALJAS CHOP OGBE
21.15	EVENING WORSHIP	19.45	THE CHOICE IS MINE (DCA)	10.15	PERSONAL PAID ANNOUNCEMENT
21.30	NNOKO ANYI (Igbu 1/2hr. Magazine)	20.00	STATE NEWS IN ENGLISH, ITSEKIRI & URHOB	10.45	MY TASTE IN MUSIC (DCA)
22.10	THOUGHT FOR THE DAY	20.30	ADVENTURES OF PA OGBEMI ALIAS CHOP CHOP	11.00	CAN YOU GUESS (RPT. FROM THUR. 22.30)
22.15	ANNOUNCER'S CHOICE	20.45	CHRISTIAN COMMENT	11.03	INTERLUDE
22.30	CAN YOU GUESS (RPT. SAT. 10.15 a.m.)	21.00	SHORT STORY IN DIALECT (ETSAKO/AKOKO EDO)	11.30	NEWS IN BRIEF (State)
23.00	MESSAGE OF ALLAH	21.15	EVENING WORSHIP	11.30	YOUTH CARNIVAL (V. & L.E.)
23.10	MAGIC MOMENT	21.30	EZON OTU ADO E (1/2hr. Ezon Magazine)	12.00	NEWS IN BRIEF (State)
00.00	NEWS AT MIDNIGHT (State)	22.10	THOUGHT FOR THE DAY	12.03	GLOBAL SOUND (COMM.)
00.05	CLOSING ANNOUNCEMENT	22.30	ANNOUNCER'S CHOICE	13.15	TEMPOS IN HIGHLIFE (COMM.)
00.05.30	NATIONAL PLEDGE/ ANTHEM	23.00	OUR FESTIVAL	14.00	NEWS IN BRIEF (State)
		23.10	ISLAM AND YOU	14.03	TEMPOS IN HIGHLIFE (COMM.)
		00.00	MAGIC MOMENTS	15.10	PERSONAL PAID ANNOUNCEMENT (P.P.A.)
		00.05	NEWS AT MIDNIGHT (State)	15.30	STATE NEWS IN ENGLISH
		00.05.30	CLOSING ANNOUNCEMENT	16.10	EDO, IGBO & EZON
			NATIONAL PLEDGE/ ANTHEM	16.30	ANNOUNCER'S CHOICE/ JINGLES
				18.45	SPORTS PAVILLION
				19.10	HERITAGE
				20.00	I SALUTE UNA (COMM.)
				20.30	STATE NEWS IN ENGLISH, ISOKO, ITSEKIRI & URHOB
				21.00	I SALUTE UNA
				21.30	IRHURU OTORIA (1/2hr. Isoko Magazine)
				22.10	MIXED MUSIC (Music Dept.)
				22.15	THOUGHT FOR THE DAY
				22.30	EVENING WORSHIP
				23.00	A DATE WITH AN ARTIST
				00.00	SATURDAY DISCO/THREE
				00.05	NEWS AT MIDNIGHT (State)
				00.05.30	CLOSING ANNOUNCEMENT
					NATIONAL PLEDGE/ ANTHEM

FRIDAYS:

05.30	DRUM SIGNAL
05.33	STATION ANNOUNCEMENT
05.33.30	NATIONAL ANTHEM
05.34	NATIONAL PLEDGE
05.34.30	FREQUENCY ANNOUNCEMENT
05.35	PROGRAMME SUMMARY
05.40	FAMILY PRAYERS
05.50	READING FROM THE HOLY QURAN
06.00	NEWS AT DAWN (State)
06.05	THOUGHT FOR THE DAY
06.10	TODAY'S SHOW (COMM.)
06.56	THOUGHT FOR THE DAY
07.00	NIGERIAN BEATS (COMM.)
07.00	LIGHT INSTRUMENTAL MUSIC
08.15	WOMEN'S CORNER (RPT. SUNDAY @ 08.30)
08.45	THE CHOICE IS MINE
09.10	THE BEAT IS BLACK (COMM.)
09.55	PERSONAL PAID ANNOUNCEMENT
10.00	ISOKO MUSIC (COMM.)
10.30	ITSEKIRI MAGAZINE
11.30	NEWS IN BRIEF (State)
11.05	MY TASTE IN MUSIC
11.15	MEET THE ARTIST
11.30	IGBO MAGAZINE
12.00	NEWS IN BRIEF (State)
12.05	MID-DAY MELODIES (COMM.)
13.15	JUMAT SERVICE
14.00	NEWS IN BRIEF
14.05	MERRY GO ROUND (COMM.)
15.00	HOME MADE SOUNDS (COMM.)
15.20	PERSONAL PAID ANNOUNCEMENT

SATURDAYS:

05.30	DRUM SIGNAL
05.33	STATION ANNOUNCEMENT
05.33.30	NATIONAL ANTHEM
05.34	NATIONAL PLEDGE
05.34.30	FREQUENCY ANNOUNCEMENT
05.35	PROGRAMME SUMMARY
05.40	FAMILY PRAYERS
05.50	READING FROM THE HOLY QURAN
06.00	NEWS AT DAWN (State)

Subscription Form

Please send me Radio-TV Times for one year beginning

with the month of 19.....
I enclose a Postal Order for ₦2.40

Name

Address

RADIO BORNO

PROGRAMME SCHEDULE

1387KHz - 275 metres
6.100MHz - 48 metres

6630 - 6095Hz

SUNDAYS:

0630 STATION CALL SIGNAL
0633 NATIONAL ANTHEM, PLEDGE AND OPENING ANNOUNCEMENT
0633 READING FROM THE HOLY KORAN
0648 PROGRAMME PARADE IN ENGLISH AND HAUSA
0600 NEWS AT DAWN
0603 MOMENT FOR THOUGHT
0606 LAKE TO LAGOS - A Programme of Mixed Music
0700 THE NEWS
0710 THE CRITIC
0715 LET'S WORSHIP
0800 MY KIND OF MUSIC
0815 DAGAMASU AURARONMU (Rpt. From Thursday 1815 Hrs)
0845 ANNOUNCER'S CHOICE
0900 MUNA KWARYA - A Breakfast Time Request - Programme in Hausa
1000+ SUNDAY SPECIAL - A Request Programme in English
1100 KUTTUNEM GULLE (Rpt. From Friday 1915)
1130 MUZAGA MUGA NI - A Feature Programme in Hausa
1200 MIXED MUSIC IN RECORDS
1230 KU MATSO YARA - Children's Programme in Hausa (Rpt. Friday 1315 Hrs)
1300 THE NEWS
1310 FROM THE NIGERIAN EDITORIALS
1315 FULEI KARNE - Request Programme in Kanuri
1400 ACROSS THE NATION
1500 (COMM) ALWUSHIR (Rpt. From Friday 1530 Hrs)
1530 AMSOSHIN TAMBAYOYIN ADDININ KRISTA (Rpt. Saturday 0730 Hrs)
1615 (COMM) MUSIC OF OUR NEIGHBOURS
1645 SHORT STORIES
1700 ANNOUNCER'S CHOICE
1715 SPORT REVIEW
1730 PLEASE EXPLAIN (N.Y.S.C. Forum) (Rpt. Tuesday (1900 Hrs))
1800 HOSPITAL REQUEST in Hausa
1900 EVENING FIESTA - Mixed Music on Records
1945 NILEFA KLIJ - Health is Wealth in Kanuri (Rpt. Wednesday 1345 Hrs)
2000 INTERLUDE
2015 FATAWA by MOHAMMED SA'ADU (Rpt. Thursday 1730 Hrs)

2045 BORNO STATE CALLING - A Borno State Government Sponsored Programme (Rpt. Monday 0745 Hrs)
2210 THE NEWS
2210 INTERLUDE
2230 (COMM) MUSIC FOR ROYALTY
2300 MU KWANA LAFIA - A Request Programme in Hausa
2345 READING FROM THE HOLY KORAN
0000 NEWS AT MIDNIGHT
0006 CLOSE DOWN

MONDAY

0630 STATION CALL SIGNAL
0633 NATIONAL ANTHEM PLEDGE AND OPENING ANNOUNCEMENT
0634 READING FROM THE HOLY KORAN
0648 PROGRAMME PARADE IN ENGLISH AND HAUSA
0650 NEWS AT DAWN
0603 MOMENT FOR THOUGHT
0605 FROM THE NIGERIA EDITORIALS
0610 BARKA DA ASUBA
0645 STATE NEWS SUMMARY
0650 INTERLUDE
0700 THE NEWS
0710 NEWS ANALYSIS
0715 BABIN MATA: A House Wives Special Programme in Hausa (Rpt. Friday 1615)
0745 BORNO STATE CALLING : A Borno State Sponsored Programmed (Rpt. From Sunday 2045) Hrs
0800 NEWS SUMMARY in Fulfulde, Hausa and Kanuri
0815 MAKADIN SAFE
0845 TATSUNIYA (Folk Tale in Hausa (Rpt. Monday Friday (1945) Hrs)
0900 MUNA KWARYA - A Breakfast Time Request - Programme in Hausa
1000 LAFIYA UWAR JIKI - (Rpt. Tuesday 1815 Hrs)
1015 ALGIETA MUSIC
1045 TITIMI (Folk Tjls in Kanuri (Rpt. from Wed 1945 Hrs)
1100 UWAR GIDA KUNNENKI NAWA - (Rpt. on Wednesday 2215) Hrs
1145 ANNOUNCER'S CHOICE
1200 TAHIRIN ANNABI
1230 FILIN MANOMA - For Farmers (Rpt. From Saturday (1315) Hrs)
1300 THE NEWS
1310 FROM THE NIGERIA EDITORIALS

1415 TADA'A LALEWO (Rpt. from Saturday 1400 Hrs)
1345 SHORT STORIES (Rpt. from Sunday 1640 Hrs)
1400 MUSIC WHILE YOU WORK
1600 (COMM) MUSIC FROM OTHER STATES
1630 STATE NEWS IN ENGLISH
1640 P.P.A./INTERLUDE
1600 NETWORK NEWS
1810 A DISC FOR YOU
1815 NGAM ROBE TEGAL: - A House Special in Fulfulde (Rpt. Wed 1000 Hrs)
1645 MUSIC BREAK
1700 STATE NEWS in Fulfulde, Hausa and Kanuri
1730 BARKA DA YAMMA - A Programme of Indigenous Music
1800 YOUTH FORUM A Variety Programme for the Young and Young at Heart (Rpt. Wednesday 1430 Hrs)
1830 (COMM) TASHI TAKA
1855 EVENING PRAYERS
1900 AN HOUR WITH WILLIE - A Programme of Music and Chit Chat
2000 STATE NEWS in English and Fulfulde
2020 P.P.A./INTERLUDE
2030 STATE NEWS in Hausa and Kanuri
2050 P.P.A./INTERLUDE
2100 LOKACIN HIRA in Fulfulde (Rpt. Wed. 2130 hrs)
2130 MUKOYI ADDINI IN KANURI: A Programme in Islamic Religion
2200 THE NEWS
2210 NEWS ANALYSIS
2215 FULEI KARNE - A Request Programme in - Kanuri
2300 SAI DA SAFE:
2345 READING FROM THE HOLY KORAN
0000 NEWS AT MIDNIGHT
0006 CLOSE DOWN

TUESDAY

0630 STATION CALL SIGNAL
0633 NATIONAL ANTHEM PLEDGE AND OPENING ANNOUNCEMENT
0634 READING FROM THE HOLY KORAN
0648 PROGRAMME PARADE IN ENGLISH AND HAUSA
0600 NEWS AT DAWN
0603 MOMENT FOR THOUGHT

RADIO BORNO

PROGRAMME SCHEDULE

1397KHz - 215 metres
6.100MHz - 48 metres

0630 - 0006 hrs

0605	FROM THE NIGERIAN EDITORIALS	2050	P. P. A MUSIC BREAK	1300	THE NEWS	
0610	INA KWANA - A Programme of Music in Disc	2100	TOMORROW ON RADIO BORNO	1310	FROM THE NIGERIAN EDITORIALS	
0630	DAGA BAKIN JAMA (Rpt from Saturday 1430 hrs)	2110	MIXED MUSIC	1315	(COMM) BARKA DA RAIYA	
0645	STATE NEWS IN BRIEF	2130	KANURI HALF HOUR	1345	1545 Hrs) (Rpt from Sunday	
0650	INTERLUDE	2200	IA Magazine Programme in Kanuri (Rpt. Wednesday 0715 Hrs)	1400	BARKA DA RANA	
0700	THE NEWS	2210	NEWS ANALYSIS	1430	YOUTH FORUM (Rpt. from Monday 1800 Hrs)	
0710	NEWS ANALYSIS	2215	SPORTS REVIEW (Rpt. from Sunday 1715 Hrs)	1500	TOMORROW ON RADIO BORNO	
0715	MAIDUGURI EXPRESS - A Programme of Music and Chit Chat	2230	(COMM) JANTU MUSIC	1510	MIXED MUSIC ON RECORDS	
0800	NEWS SUMMARY in Fulfulde Hausa and Kanuri	2230	MU KWANA LAFIYA - A Late Night Request Programme in Hausa	1540	P. P. A. INTERLUDE	
0815	RETA SA'A FULBE - (Rpt from Saturday 1015 Hrs)	2345	READING FROM THE HOLY KORAN	1600	THE NEWS	
0845	MUSIC BREAK	0000	NEWS AT MIDNIGHT	1600	A DISC FOR YOU	
0900	DON IYALENKU - A Family Favourite Request Programme in Hausa	0005	CLOSE DOWN	1615	YA KAMUASO - House Wives Special - Programme in Kanuri (Rpt. Friday 0815 Hrs)	
1000	(COMM) KUKUMA MUSIC	WEDNESDAYS:			1645	INTERLUDE
1030	WURO SUMONNEM - A Drama Programme in Kanuri (Rpt. Saturday 1815 Hrs)	0530	STATION CALL SIGNAL	1700	STATE NEWS IN FULFULDE, HAUSA AND KANURI	
1100	JERIN MAKASAN NIGERIAN - A Cavalcade of Nigerian Music in Hausa	0533	NATIONAL ANTHEM PLEDGE AND OPENING ANNOUNCEMENT	1730	MID-WEEK MEDITATION	
1200	MUSIC OF OUR STATE	0534	READING FROM THE HOLY KORAN	1800	MIXED MUSIC ON RECORDS	
1230	KORO ADDINBE (Rpt From Friday 1430 Hrs)	0549	PROGRAMME PARADE IN ENGLISH AND HAUSA	1830	TASHI TAKA	
1300	THE NEWS	0600	NEWS AT DAWN	1855	EVENING PRAYERS	
1310	EDITORIALS	0603	MOMENT FOR THOUGHT	1900	MID WEEK SHOW	
1315	KOYITAVIRO - SALAI - A Request Programme in Kanuri	0608	FROM THE NIGERIAN EDITORIALS	1945	TITTIMI (Folk Tale in Kanuri)	
1400	TIME ON MY HAND - A Programme of Mixed Music	0610	INTERLUDE	2000	STATE NEWS IN ENGLISH AND FULFULDE	
1500	BORNO STATE LAN: (Borno State Calling in Kanuri (Rpt. Sat. 1445 hrs)	0615	MU ZAGA MU GANI (Rpt from Sunday Hrs)	2020	P. P. A. /MUSIC BREAK	
1515	MIXED MUSIC	0645	STATE NEWS IN BRIEF	2030	STATE NEWS IN HAUSA AND KANURI	
1530	STATE NEWS IN ENGLISH	0650	INTERLUDE	2055	P. P. A. MUSIC BREAK	
1540	(COMM) P. P. A.	0700	THE NEWS	2100	LOKACIN HIRA IN FULFULDE (Rpt. from Monday 2100 Hrs)	
1600	THE NEWS	0715	NEWS ANALYSIS	2130	HEALTH IS WEALTH (Rpt. from Thursday 1500)	
1610	A DISC FOR YOU	0715	KANURI HALF HOUR - A Magazine Programme for Kanuri...Speaking Listeners (Rpt. from Monday 1930 Hrs)	2145	TABA KA LASHE : Indigenous Music	
1615	DATLINE MAIDUGURI (Rpt. from Saturday, 1130 Hrs)	0745	INTERLUDE	2200	THE NEWS	
1645	ANNOUNCER'S CHOICE	0800	NEWS SUMMARY in Fulfulde, Hausa and Kanuri	2210	NEWS ANALYSIS	
1700	STATE NEWS IN Fulfulde, Hausa and Kanuri	0815	KAWA ZUWA KAWA - A Family Favourite Request Programme in Hausa	2215	UWAR GIDA KUNNENKI NAWA (Rpt from Monday 1100 Hrs)	
1730	FULEI KARNE - A Request Programme in Kanuri	0845	NEWS AT MIDNIGHT	2300	MU KWANA LAFIYA - A Late Night Request Programme	
1815	LAFIYA UWAR JIKI (Rpt. from Monday 1000 Hrs)	0900	INTERLUDE	2345	READING FROM THE HOLY KORAN	
1830	TASHI TAKA	0915	MBISMILLAWO - A Breakfast Time Request - Programme in Kanuri	0000	NEWS AT MIDNIGHT	
1855	EVENING PRAYERS	1000	NGAM ROBE TEGAL - House Wives special - Programme in Fulfulde (Rpt. from Monday 1615 Hrs)	0005	CLOSE DOWN	
1900	PLEASE EXPLAIN /N Y S C FORUM (Rpt. From Sunday: (1730 Hrs)	1030	MID-MORNING MELODIES	THURSDAYS:		
1930	MUSIC TILL EIGHT	1100	DAGA TASKARMU FROM OUR LIBRARY	0530	STATION CALL SIGNAL	
2000	STATE NEWS IN ENGLISH AND FULFULDE	1200	MUSIC OF OUR STATE	0533	NATIONAL ANTHEM, PLEDGE AND OPENING ANNOUNCEMENT	
2020	P. P. A /MUSIC BREAK	1230	(COMM) KIDAN GARGAJIYA	0534	READING FROM THE HOLY KORAN	
2030	STATE NEWS IN HAUSA AND KANURI			0540	PROGRAMME PARADE IN ENGLISH AND HAUSA	
				0600	NEWS AT DAWN	
				0605	MOMENT FOR THOUGHT	
				0610	INA KWANA - A Programme of Chit-Chat	

RADIO BORNO

PROGRAMME SCHEDULE

1397KHz - 215 metres
6.100MHz - 49 metres

0530 - 0005 hrs

0645 STATE NEWS IN BRIEF
0650 INTERLUDE
0700 THE NEWS
0710 NEWS ANALYSIS
0715 INDA WATTUNDO - A Request Programme in Kanuri
0800 NEWS SUMMARY in Fulfulde, Hausa and Kanuri
0815 CHUBOL - A Breakfast Time Request Programme in Hausa
0900 INTERLUDE
0915 MUNA KWARYA BY HANSATU AZARE
1000 JUKE BOX Mixed Music
1100 INDIAN MUSIC
1130 KADE-KADEN MU
1200 BARKA DA AIKI
1230 (COMM) BARKA DA RANA
1300 THE NEWS
1315 KU KOVI ADDININ MUSULIC IN KANURI (Rpt. from Monday 2130 Hrs)
1345 MUSIC WHILE YOU WORK
1445 JIHAR BORNO KE MAGANA (Rpt. on Wednesday 0735 Hrs)
1500 (COMM) ZAKIN MAKADA
1530 STATE NEWS IN ENGLISH
1540 (COMM) P. P. A./INTERLUDE
1600 THE NEWS
1610 A DISC FOR YOU
1615 DAGA MASU SAURAROM - A Programme of Listeners' Letters in Hausa
1645 MY KIND OF MUSIC
1700 STATE NEWS IN Fulfulde, Hausa and Kanuri
1730 FATAWA BY MOHAMMED SA'ADU (Rpt. From Monday 2115 Hrs)
1800 ZABEN ALMURU - Evening Request Programme in Hausa
1845 EVENING PRAYERS
1900 KULORO WALTIVO - Special Programme for Farmers in Kanuri
1915 TOMORROW ON RADIO BORNO
1930 POLICE INFORMATION (Rpt. on Sunday 0845 Hrs)
1945 ANNOUNCER'S CHOICE
2000 STATE NEWS IN ENGLISH AND FULFULDE
2020 P. P. A. /MUSIC BREAK
2030 STATE NEWS IN HAUSA AND KANURI
2050 P. P. A. /MUSIC BREAK
2100 MIXED GRILL
2130 WASAN MU NA MAKO - Play of the Week in Hausa (Rpt. on Saturday 0815 Hrs)
2200 THE NEWS
2210 NEWS ANALYSIS
2215 ANNOUNCER'S CHOICE
2230 TAHIRIN ANNABI (Rpt from Monday 1200 Hrs)
2300 FAJARRA - A Late Night Request Programme in Kanuri

2345 READING FROM THE HOLY KORAN
0000 NEWS AT MIDNIGHT
0005 CLOSE DAWN

FRIDAYS:

0530 STATION CALL SIGNAL
0533 NATIONAL ANTHEM, PLEDGE AND OPENING ANNOUNCEMENT
0534 READING FROM THE HOLY KORAN
0539 PROGRAMME PARADE IN ENGLISH AND HAUSA
0600 NEWS AT DAWN
0603 FROM THE NIGERIAN EDITORIALS
0608 INTERLUDE
0615 MOSLEM SERMON (Rpt. from Friday 1230 Hrs)
0645 STATE NEWS IN BRIEF
0657 SHORT AND SWEET
0657 MOMENT FOR THOUGHT
0700 THE NEWS
0710 NEWS ANALYSIS
0715 BARKA DA JUMA'A - A Programme of Music and Chit-Chet in Hausa
0800 NEWS SUMMARY in Fulfulde, Hausa and Kanuri
0815 YA KAMUASO - Magazine Programme in Kanuri (Rpt. from Wednesday 1615 Hrs)
0845 ANNOUNCER'S CHOICE
0900 MUNA KWARYA - A Breakfast Time Request Programme in Hausa
1000 (COMM) WRITTEN SONGS
1030 KADE-KADEN SUDAN
1100 FULEI KARNE - A Request Programme in Kanuri
1200 (COMM) MUSLIM RELIGIOUS SONGS
1230 MOSLEM SERMON: (Rpt Friday 0615 Hrs)
1300 THE WORLD NEWS
1310 FROM THE NIGERIAN EDITORIALS
1315 KU MATSO YARA (Rpt from Sunday Programme
1345 BARKA DA RANA
1430 ALWUSHIR - A Programme of News and Events in Kanuri
1500 KORO ADDINIBE - A Programme of Questions and Answers on Islam in Kanuri (Rpt. from Tuesday 1230 Hrs)
1530 STATE NEWS IN ENGLISH
1545 P. P. A. /Music Break
1600 THE NEWS
1600 A DISC FOR YOU
1615 BABIN MATA - A Programme for House Wives in Hausa

1645 MUSIC BREAK
1700 STATE NEWS IN FULFULDE, HAUSA AND KANURI
1730 EVENING REQUEST
1815 ISHIRINIYA
1845 INTERLUDE
1855 EVENING PRAYERS
1900 ANNOUNCER'S CHOICE
1915 KUTTUNEN GULLE (Rpt. From Sunday 1100 Hrs)
1945 FOLK TALE IN HAUSA (Rpt. from Monday 0845 Hrs)
2000 STATE NEWS IN ENGLISH AND FULFULDE
2020 P. P. A. /Music Break
2030 STATE NEWS IN HAUSA AND KANURI
2100 P. P. A. /Music Break
2150 ZABEN DAREN JUMA'A - A Request Programme in Hausa
2200 THE NEWS
2210 NEWS ANALYSIS
2230 (COMM) MUSIC OF ROYALTY
2300 MBALLEN JAM: - A Late Night Request - Programme in Fulfulde
2345 READING FROM THE HOLY KORAN
0000 NEWS AT MIDNIGHT
0005 CLOSE DAWN

SATURDAYS:

0530 STATION CALL SIGNAL
0533 NATIONAL ANTHEM, PLEDGE AND OPENING ANNOUNCEMENT
0534 READING FROM THE HOLY KORAN
0549 PROGRAMME PARADE IN ENGLISH AND HAUSA
0600 NEWS AT DAWN
0605 FROM THE NIGERIAN EDITORIALS
0610 INTERLUDE
0615 STATE NEWS IN BRIEF
0650 INTERLUDE
0700 THE NEWS
0710 NEWS ANALYSIS
0715 INTERLUDE
0730 AMSSHIN TAMBAYOYIN ADDININ KRISTA (Rpt. From Sunday 1530 Hrs)
0800 NEWS SUMMARY IN FULFULDE, AND KANURI
0815 WASAN MU NA MAKO (Rpt From Thursday 2130 Hrs)
0845 POLICE INFORMATION BOX (Rpt. From Thursday 1930 Hrs)
0900 MUNA KWARYA - A Breakfast Time Request Programme in Hausa
0945 B. B. C. CALLING NIGERIA
1015 RETA SA'A FULBE - A Half Hour Magazine Programme for Fulfulde Listeners (Rpt. Tuesday 0815 Hrs)

RADIO BORNO

PROGRAMME SCHEDULE

1397KHz - 216 metres
6.100MHz - 49 metres

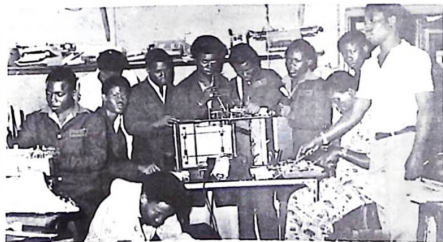
0530 - 0005 hrs

1045	U. P. E. CAMPAIGN In Kanuri	State Calling In Kanuri (Rpt. from Tuesday 1500 Hrs)	2030	STATE NEWS IN HAUSA AND KANURI
1100	CHUBOL - A Request Programme In Fulfulde	1600 HEALTH IS HEALTH (Rpt. Wednesday 2130 Hrs)	2050	P. P. A. /MUSIC BREAK
1130	DATELINE MAIDUGURI - A Programme of News Events and Reports around Borno State (Rpt. Tuesday 1615Hrs)	1615 INTERLUDE	2100	MIXED GRILL With constant time check Station Identification
1200	SATURDAY JUMP: A Light Hearted Programme of Music and Chit-Chat	1630 STATE NEWS IN ENGLISH	2130	N. Y. S. C. CALLING A Request Programme For Members of the N.Y.S.C.
1300	THE NEWS	1645 MUSIC BREAK P. P. A.	2200	THE NEWS
1310	FROM THE NIGERIAN EDITORIALS	1660 THE NEWS	2210	NEWS ANALYSIS
1315	FILIN MANOMA - A Programme for Farmers in Hausa (Rpt. Monday 1130 Hrs)	1670 MUSIC ALL THE WAY	2215	KULORO WALTIIYO (Rpt. Thursday 0845 Hrs)
1345	ANNOUNCER'S CHOICE	1700 STATE NEWS IN FULFULDE, HAUSA AND KANURI	2230	FULEI KARNE - Request Programme in Kanuri
1400	TADA'A LALEWO - Children's Programme in Kanuri (Rpt. Monday 1305Hrs)	1730 ALGEITA MUSIC	2300	WEEK END REQUEST / SATURDAY NIGHTOUT - A Late Night Request Programme in English
1430	DAGA BAKIN JAMA'A (Rpt. on Tuesday 0630 Hrs)	1800 ZABEN ALMURU - Evening Request Programme in Hausa	2345	READING FROM THE HOLY KORAN
1445	BORNO STATE LAN. (Borno	1855 EVENING PRAYERS	0000	NEWS AT MIDNIGHT
		1900 P. P. A. /Music Break	0005	CLOSE DOWN
		1915 WUROSUMONE - A Drama Programme in Kanuri - (Rpt. from Tuesday 1030 Hrs)		
		1945 ANNOUNCER'S CHOICE		
		2000 STATE NEWS IN ENGLISH AND FULFULDE		
		2020 P. P. A. /MUSIC BREAK		

JOEANIS

OFFICE MACHINE SERVICE

specialists in repairing and servicing of all types of Office Equipments



- HEAD OFFICE:-** 80, Nnamdi Azikiwe Street, 1st & 2nd Floor Tom Jones Hall Building, P. O. Box 1085, Lagos. Telephone No. 652087 & 637554 Lagos.
- IKEJA BRANCH:-** 16, C. J. Akran Avenue, Ikeja.
- IBADAN BRANCH:-** SW8/446C Lodge Street, Oke Ado P. O. Box 720, Ibadan. Telephone No. 413603 Ibadan.

RADIO CROSS RIVER

PROGRAMME SCHEDULE

1397KHz -- 215 metres
6.145 MHz -- 49 metres

0530 - 0005 hrs

SUNDAYS:

- 05.30 DRUM SIGNAL
05.33 OPENING ANNOUNCEMENT.
05.34 NATIONAL ANTHEM/PLEDGE/SEQUENCE
05.35 FAMILY PRAYERS
05.50 PROGRAMME PARADE
05.55 A DISC FOR YOU
06.00 SENTIMENTAL TUNES ON RECORDS
06.45 ATTENTION PLEASE
07.00 NATIONAL NEWS
07.10 ORGAN MUSIC
07.15 LET'S WORSHIP
08.00 LIGHT MUSIC
08.15 LOOKING AHEAD (Rept. 17.15)
08.30 TIME AND TIDE (From Saturday 20.30)
09.00 CHORAL SINGING (From Saturday 19.30)
09.15 SUNDAY MORNING MELODIES (NO ADVERTS)
10.00 WORLD NEWS
10.10 FORCES CALLING
11.00 TALKING POINT (From Saturday 22.30)
11.30 CITY CARAVAN (From Saturday 11.30)
12.00 SUNDAY REQUEST
13.00 WORLD NEWS
13.10 NIGERIAN TRADITIONAL MUSIC.
13.30 BEKWARA MAGAZINE (From Saturday 21.30)
14.00 ACROSS THE NATION
15.00 YOU AND THE LAW (From Wednesday 19.30)
15.15 MUSIC OF OUR STATE (From Friday 19.45)
15.30 CALABAR PLAY HOUSE (From Tuesday 21.30)
16.00 NATIONAL NEWS
16.10 INTERLUDE/PERSONAL ANNOUNCEMENTS
16.15 SCHOOLS CHALLENGE (Rept. Monday 19.30)
16.45 PRAISE THE LORD
17.00 LOOKING AHEAD (From 08.15)
17.15 EJAGHAM BALLAD (From Saturday 13.15)
17.30 MBOHO NYIN (From Saturday 14.15)
18.00 EFIK TUNES ON RECORDS
18.15 QUESTION TIME ON CRBC (From Saturday 19.45)
18.30 MOMENTS TO SHARE (From Wednesday 20.30)
19.00 NATIONAL NEWS
19.10 INTERLUDE
19.15 MBOHO IBAN (Repeat Monday 20.30)

- 10.45 PERSONAL PAID ANNOUNCEMENTS
20.00 SUNDAY CONCERT
21.00 COMMUNITY HYMN SINGING
21.30 EFIK BALLAD
21.45 ANNOUNCER'S CHOICE
22.00 NATIONAL NEWS
22.10 WEATHER NEWS/INTERLUDE
22.15 SUNDAY SERENADE
23.00 CALABAR MUSIC ROOM
23.45 EVENING WORSHIP
00.05 CLOSE DOWN

MONDAYS:

- 05.30 DRUM SIGNAL
05.33 OPENING ANNOUNCEMENT
05.34 NATIONAL ANTHEM/PLEDGE/SEQUENCE
05.35 FAMILY PRAYERS
05.50 PROGRAMME PARADE
05.55 A DISC FOR YOU
05.58 DRUM SIGNAL/JINGLE
06.00 WORLD NEWS
06.10 CROSS RIVER SUNRISE (COMM) Easy to listen to and smooth flowing music mainly Nigerian
06.45 ATTENTION PLEASE
07.00 NATIONAL NEWS
07.15 MUSIC AFRICANA (COMM) Brisk, colourful and various musical expeditions mainly African
08.00 CITY CARAVAN (From Sunday 11.30)
08.30 MUSIC FOR YOU AT HOME
09.00 MUSIC RENDEZVOUS (COMM) Music tuneful, bouncy and various non-stop
09.30 BEKWARA MAGAZINE (From Sunday 13.30)
10.00 MUSIC FOR SHOPPERS (Sweet flowing music for easy shopping)
11.00 MUSIC WHILE YOU WORK
11.58 DRUM SIGNAL/JINGLE
12.00 STATE NEWS
12.10 MIDDAY MELODIES (COMM) Music sentimental, light and cheerful with accent on melodies.
13.00 WORLD NEWS
13.10 NEWS ANALYSIS
13.15 MUSIC WHILE YOU WORK (COMM) Soft and easy to hum by those at work played non-stop
14.00 TRADITIONAL MUSIC ON RECORDS
15.00 ATTENTION PLEASE

- 15.15 REGGAE TIME
15.30 WORLD NEWS IN EFIK, BEKWARA & EJAGHAM
16.00 NATIONAL NEWS
16.10 A DISC FOR YOU
16.15 FEED THE PEOPLE (Rept. Thursday 19.45)
16.30 MOMENTS TO SHARE (Rept. Tuesday 09.30)
17.00 WOMEN'S SPECIAL
17.15 KIDDIES CORNER (Rept. Wednesday 17.00)
17.30 EFIK PLAY (Rept. Thursday 20.30)
18.00 BEKWARA REQUEST
18.58 DRUM SIGNAL/JINGLE
19.00 WORLD NEWS (STATE)
19.10 ATTENTION PLEASE/INTERLUDE
19.30 SCHOOLS CHALLENGE (From Sunday 16.15)
20.00 WORLD NEWS IN EFIK BEKWARA & EJAGHAM
20.30 MBOHO IBAN (From Sunday 19.15)
21.00 STATE SPORTS MAGAZINE (Rept. Tuesday 17.30)
21.30 BAND STAND (Rept. Tuesday 17.00)
22.00 NATIONAL NEWS
22.10 WEATHER NEWS/NEWS ANALYSIS
22.15 EFIK BALLAD (From Sunday 21.30)
22.30 MUSIC OF OUR LAND (Rept. Tuesday 08.00)
23.00 CALABAR MUSIC ROOM
23.45 EVENING WORSHIP
00.00 NEWS AT MIDNIGHT
00.05 CLOSE DOWN

TUESDAYS:

- 05.30 DRUM SIGNAL
05.33 OPENING ANNOUNCEMENT
05.34 NATIONAL ANTHEM/PLEDGE/SEQUENCE
05.35 FAMILY PRAYERS
05.50 PROGRAMME PARADE
05.55 A DISC FOR YOU
05.58 DRUM SIGNAL/JINGLE
06.00 WORLD NEWS
06.10 CROSS RIVER SUNRISE (COMM) Easy to listen to and smooth flowing music mainly Nigerian
06.45 ATTENTION PLEASE
7.00 NATIONAL NEWS
07.10 NEWS ANALYSIS
07.15 TRADITIONAL MUSIC
08.00 MBOHO NYIN (From Sunday 17.30)

RADIO CROSS RIVER

PROGRAMME SCHEDULE

1397KHz - 215 metres

6.145 MHz - 49 metres

0530 - 0005 hrs

08.30	MUSIC FOR YOU AT HOME (COMM) Sweet and leisurely for the stay-at-home	23.00	CALABAR MUSIC ROOM Sweet and soft tunes for those awake and listening	16.45	ANNOUNCER'S CHOICE	
09.00	MUSIC RENDEZVOUS (COMM) Music tuneful, bouncy and various	23.45	EVENING WORSHIP	17.00	KIDDIES CORNER (From Monday 17.15)	
09.30	MOMENTS TO SHARE (From Monday 16.30)	00.00	NEWS AT MIDNIGHT	17.15	OUR MUSICAL CULTURE (Rept. Thursday 19.30)	
10.00	MUSIC FOR SHOPPERS (Sweet and flowing music for easy shopping)	00.05	CLOSE DOWN	17.30	RIWU ENYINYE TENN (From Tues. 21.00)	
11.00	MUSIC WHILE YOU WORK	WEDNESDAYS:			18.00	EKOM DO
11.58	DRUM SIGNAL/JINGLE	05.20	DRUM SIGNAL	19.00	WORLD NEWS IN ENGLISH	
12.00	STATE NEWS	05.33	OPENING ANNOUNCEMENT	19.10	ATTENTION PLEASE	
12.10	MIDDAY MELODIES (COMM) Music sentimental, light and with accent on melodies	05.34	NATIONAL ANTHEM/PLEDGE/SEQUENCE	19.30	YOU AND THE LAW (Rept. Sunday 15.00)	
13.00	WORLD NEWS	05.35	FAMILY PRAYERS	19.45	MEET THE CRBC CHOIR (Rept. Saturday 10.45)	
13.10	NEWS ANALYSIS	05.50	PROGRAMME PARADE	20.00	WORLD NEWS IN EFIK, IFRKWARA & EJAGHAM	
13.15	TUESDAY AT 1.15	05.55	A DISC FOR YOU	20.30	MOMENTS TO SHARE (Rept. Sunday 18.30)	
14.00	LISTENER'S CHOICE	05.58	DRUM SIGNAL/JINGLE	21.00	EKUME ANAKAE (Rept. Friday 16.15)	
14.00	ATTENTION PLEASE	06.00	WORLD NEWS AT DAWN	21.30	FEATURE: FOCUS ON DEVELOPMENT (Rept. Sat. 13.30)	
15.15	MUSIC FROM OTHER STATES ON RECORDS (COMM)	06.10	CROSS RIVER SUNRISE (COMM) Easy to listen to and smooth flowing music and mainly Nigerian	22.00	NATIONAL NEWS	
15.30	WORLD NEWS IN EFIK, BEKWARA & EJAGHAM	06.45	ATTENTION PLEASE	22.10	WEATHER NEWS/NEWS ANALYSIS	
16.00	NATIONAL NEWS	07.00	NATIONAL NEWS	22.15	ANNOUNCER'S CHOICE	
16.10	A DISC FOR YOU	07.10	NEWS ANALYSIS	22.30	EFIK PLAY (From Monday 17.30)	
16.15	KIDDIES REQUEST TIME (ENGLISH)	07.15	MIDWEEK REQUEST	23.00	CALABAR MUSIC ROOM Soft, quiet and sweet music for a relaxed listening	
17.00	BAND STAND (Rept. Thursday 16.30)	07.15	MIDWEEK REQUEST	23.45	EVENING WORSHIP	
17.30	STATE SPORTS MAGAZINE (From Monday 21.00)	08.00	MATTERS OF THE MOMENT (Rept. Fri. 17.30)	00.00	NEWS AT MIDNIGHT	
18.00	EKOM DO (COMM)	08.00	MATTERS OF THE MOMENT (Rept. Fri. 17.30)	00.05	CLOSE DOWN	
18.58	DRUM SIGNAL/JINGLE	08.30	MUSIC FOR YOU AT HOME (COMM.) Sweet and leisurely for the stay-at-home	THURSDAYS:		
19.00	WORLD NEWS IN ENGLISH	09.00	MUSIC RENDEZVOUS (COMM.) Music tuneful, bouncy and various	05.30	DRUM SIGNAL	
19.10	ATTENTION PLEASE	10.00	MUSIC FOR SHOPPERS Sweet flowing music for easy shopping	05.33	OPENING ANNOUNCEMENT	
19.20	EKONG NKE (Rept. Friday 19.30)	11.00	MUSIC WHILE YOU WORK	05.34	NATIONAL ANTHEM/PLEDGE/SEQUENCE	
19.45	THE RADIO DOCTOR (Rept. Friday 16.45)	11.58	DRUM SIGNAL/JINGLE	05.35	FAMILY PRAYERS	
20.00	WORLD NEWS IN EFIK, BEKWARA & EJAGHAM	12.00	STATE NEWS	05.50	PROGRAMME PARADE	
20.30	MATTERS OF THE MOMENT (Rept. Wed. 08.00) A programme of actuality report and commentaries on the week's events from all parts of the CRS	12.10	MIDDAY MELODIES (COMM.) Music sentimental, light and cheerful with accent	05.55	A DISC FOR YOU	
21.00	RIWU ENYINYE TENN (Rept. Wednesday 17.30)	13.00	WORLD NEWS	05.58	DRUM SIGNAL/JINGLE	
21.30	CALABAR PLAY HOUSE (Rept. Sunday 16.30)	13.10	FROM THE NIGERIAN EDITORIALS	06.00	WORLD NEWS	
22.00	NATIONAL NEWS	13.15	MUSIC FOR YOUR DELIGHT (COMM.) Played nonstop for afternoon relaxation	06.10	CROSS RIVER SUNRISE (COMM) Brisk to listen to and smooth flowing music mainly Nigerian	
22.10	WEATHER NEWS/NEWS ANALYSIS	14.00	TRADERS' SPECIAL (COMM.) A special request programme for all those engaged in any form of trading.	06.45	ATTENTION PLEASE	
22.15	ANNOUNCER'S CHOICE	15.00	ATTENTION PLEASE	07.00	NATIONAL NEWS	
22.30	TWENTY QUESTIONS (Rept. Thursday 21.00)	15.15	REGGAE TUNES ON RECORDS	07.10	NEWS ANALYSIS	
		15.30	WORLD NEWS IN EFIK, BEKWARA & EJAGHAM	07.15	MUSIC AFRICANA (COMM) Brisk, colourful, and various musical expeditions mainly African	
		16.00	NATIONAL NEWS	08.00	MUSIC FOR YOU AT HOME (COMM) Music tuneful, bouncy and various	
		16.10	A DISC FOR YOU			
		16.15	FEMININE WORLD (Rept. Thursday 21.30)			

RADIO CROSS RIVER

PROGRAMME SCHEDULE

1387KHz - 215 metres
8.148 MHz - 49 metres

0630 - 0005 hrs

09.00 MUSIC RENDEZVOUS (COMM) Music tuneful, buoyancy and variety

10.00 MUSIC FOR SHOPPERS Sweet flowing music for easy shopping

11.00 MUSIC WHILE YOU WORK

11.58 DRUM SIGNAL/JINGLE

12.00 STATE NEWS IN ENGLISH

12.10 MIDDAY MELODIES (COMM) Sentimental, light and cheerful with accent on melodies.

13.00 WORLD NEWS

13.10 FROM THE NIGERIAN EDITORIALS

13.15 MUSIC AT LUNCH TIME (COMM) Music tuneful and melodious tunes to enhance appetite

14.00 DANCE MUSIC ON RECORDS (COMM) Popular african dance tunes including Nigerian Rhythm

15.00 ATTENTION PLEASE SENTIMENTAL TUNES

15.30 WORLD NEWS IN EFIK BEKWARA & EJAGHAM

16.00 NATIONAL NEWS

16.10 A DISC FOR YOU

16.15 NKA NDITO (Rept. Saturday 14.45)

16.30 BAND STAND (From Tuesday 17.00)

17.00 TEENAGE TIME (Rept. Saturday 11.00)

17.30 EBU EJAGHAM EJERE (Rept. Saturday 09.30)

18.00 EKOM DO (COMM)

19.00 WORLD NEWS IN ENGLISH

19.10 ATTENTION PLEASE

19.30 OUR MUSICAL CULTURE (Rept. Friday 22.15)

19.45 FEED THE PEOPLE (From Monday 16.15)

20.00 WORLD NEWS IN EFIK, BEKWARA & EJAGHAM

20.30 EFIK PLAY (From Wednesday 22.30)

21.00 FACE THE PEOPLE (Rept. Saturday 21.00)

21.30 FEMINE WORLD (From Wednesday 16.15)

22.00 NATIONAL NEWS

22.10 WEATHER NEWS/NEWS ANALYSIS

22.15 SPORTS ROUND-UP

22.30 MUSIC OF OUR LAND (Rept. Saturday 10.15)

23.00 CALABAR MUSICAL ROOM Soft, sweet romantic tunes for those awake and listening.

23.45 EVENING WORSHIP

00.00 NEWS AT MIDNIGHT

00.05 CLOSE DOWN

FRIDAYS:

05.30 DRUM SIGNAL

05.33 OPENING ANNOUNCEMENT

05.34 NATIONAL ANTHEM/PLEDGE/SEQUENCE

05.35 FAMILY PRAYERS

05.50 PROGRAMME PARADE

05.55 A DISC FOR YOU

05.58 DRUM SIGNAL/JINGLE

06.00 WORLD NEWS

06.10 CROSS RIVER SUNRISE (COMM)

06.45 ATTENTION PLEASE

07.00 NATIONAL NEWS

07.10 NEWS ANALYSIS

07.15 TRADITIONAL MUSIC

08.00 FEMINE WORLD (From Wednesday 16.15)

08.30 MUSIC FOR YOU AT HOME

09.00 MUSIC RENDEZVOUS (COMM)

10.00 MUSIC FOR SHOPPERS

11.00 MUSIC WHILE YOU WORK

11.58 DRUM SIGNAL/JINGLE

12.00 STATE NEWS

12.10 MIDDAY MELODIES

13.10 FROM THE NIGERIAN EDITORIALS

13.15 MUSIC FOR YOUR RELAXATION

14.00 TAKE YOUR CHOICE

15.00 ATTENTION PLEASE

15.15 SPORTS ROUND-UP (From Thursday 21.15)

15.30 WORLD NEWS IN EFIK, BEKWARA & EJAGHAM

16.00 NATIONAL NEWS

16.10 A DISC FOR YOU

16.15 EKUME ANAKAE (From Wednesday 21.00)

16.45 THE RADIO DOCTOR (From Tuesday 19.45)

17.00 SENTIMENTAL TUNES

17.15 GOSPEL TIME (Rept. Saturday 15.15)

17.30 MATTERS OF THE MOMENT (From Wed. 21.30)

18.00 EJAGHAM REQUEST

19.00 WORLD NEWS

19.10 ATTENTION PLEASE/INTERLUDE

19.30 EKONG NKE (From Tuesday 19.30)

19.45 MUSIC OF OUR STATE (Rept. Sunday 15.15)

20.00 WORLD NEWS IN EFIK, BEKWARA & EJAGHAM

20.30 MSONO ISAN (Rept. Sunday 19.15 & Monday 20.30)

21.00 FROM OUR GRAM LIBRARY

21.30 TALKING POINT (Rept. Saturday 22.15)

22.00 NATIONAL NEWS

22.10 WEATHER NEWS/NEWS ANALYSIS

22.15 OUR MUSICAL CULTURE (From Thursday 19.30)

22.30 BAND STAND (From Thursday 16.30)

23.00 CALABAR MUSICAL ROOM

23.45 EVENING WORSHIP

00.00 NEWS AT MIDNIGHT

00.05 CLOSE DOWN

SATURDAYS:

05.30 DRUM SIGNAL

05.33 OPENING ANNOUNCEMENT

05.34 NATIONAL ANTHEM/PLEDGE/SEQUENCE

05.35 FAMILY PRAYERS

05.50 A DISC FOR YOU

05.58 DRUM SIGNAL/JINGLE

06.00 WORLD NEWS

06.10 SATURDAYS SPECIAL Rally Babe Ekpenyong

06.45 ATTENTION PLEASE

07.00 NATIONAL NEWS

07.10 NEWS ANALYSIS

07.15 WEEKEND REQUEST

08.00 MUSIC FOR YOU AT HOME (COMM) Sweet and leisurely music for the stay-at-home

09.00 MUSIC RENDEZVOUS (COMM) Music tuneful, buoyancy and variety

09.30 EBU AJAGHAM EJERE (From Thursday 17.30)

10.00 ANNOUNCER'S CHOICE

10.15 MUSIC OF OUR LAND (From Thursday 22.30)

10.45 MEET THE CRBC CHOIR (From Wednesday 19.45)

11.00 TEENAGE TIME (From Thursday 17.00)

11.30 CITY CARAVAN (Rept. Sunday 11.30)

11.58 DRUM SIGNAL/JINGLE

12.00 STATE NEWS IN ENGLISH

12.10 EKOH DO (COMM)

13.00 WORLD NEWS

13.10 FROM THE NIGERIAN EDITORIALS

13.15 EJAGHAM BALLAD

13.30 FEATURE: FOCUS ON DEVELOPMENT (From Wed. 21.30)

14.00 EFIK TUNES ON RECORDS

14.15 MBOHO NYIN (Rept. Sun 17.30)

14.45 NKA NDITO (From Thur. 16.15)

15.00 ATTENTION PLEASE

15.15 GOSPEL TIME (From Fri. 17.15)

15.30 WORLD NEWS IN EFIK, BEKWARA & EJAGHAM

15.50 INTERLUDE

16.00 NATIONAL NEWS

16.10 POP TUNES

16.30 SPORTS PAVILLION

16.45 ANNOUNCER'S CHOICE

19.00 WORLD NEWS IN ENGLISH

19.10 ATTENTION PLEASE

19.30 CHORAL SINGING

19.45 QUESTION TIME ON CRBS

20.00 WORLD NEWS IN EFIK BEKWARA & EJAGHAM

20.30 TIME AND TIDE/FACE THE PEOPLE (Rept. Sun. 08.30)

21.00 FACE THE PEOPLE

21.30 BEKWARA MAGAZINE

22.00 NATIONAL NEWS

22.10 NEWS ANALYSIS/WEATHER NEWS

22.15 TALKING POINT

22.45 EVENING WORSHIP

23.00 CALABAR MUSICAL ROOM

00.00 NEWS AT MIDNIGHT

00.05 CLOSE DOWN

FRN:IBADAN

PROGRAMME SCHEDULE

6.050 MHz (49 Meters) Short Wave
657 KHz (457 Meters) Medium Wave
575 KHz (522 Meters) Medium Wave

SUNDAYS

0630	DRUM SIGNAL
0633	OPENING
0634	NATIONAL ANTHEM & PLEDGE
0638	PROGRAMME PARADE
0640	MORNING DEVOTING
0640	EARLY MORNING SERMON:
0600	SONGS OF PRAISE
0630	SUNDAY MORNING MELODIES
0700	NETWORK NEWS
0710	NEWS ANALYSIS
0718	LET'S WORSHIP
0800	THE WEEK AHEAD
0818	THE WAY I SEE IT
0828	INTERLUDE
0830	SUNDAY YOUTH FORUM
0848	MUSIC OF OUR ZONE
0900	PROGRESS REPORT
0818	OKHUOROWA - (Edo Women's Magazine)
0848	POLITICAL ROUND-UP (From Sat. 2018 hrs)
1000	ERE IGBALODE
1000	AGBAJO OWO - Co-operatives Half Hour
1100	UKOLA WEWE (Igalu Magazine)
1130	FEYIKOGBON (Yoruba Drama)
1200	CARDS CARNIVAL
1200	NETWORK NEWS
1310	INTERLUDE
1318	THE LAST SEVEN DAYS
1348	IKWOWORO - Urhobo Social Music
1400	POPULAR CLASSICS
1430	OGA LOKELE (Production by Sole Lala)
1800	FOCUS: Discussion Programme on Current Affairs (From Sat. 2130 hrs)
1830	E NLE NREUN O (Yoruba Magazine) Rept. Thursday 1730
1800	NETWORK NEWS
1810	HOSPITAL CASE NOTES
1818	SCHOOLS CHALLENGE (Production by Yinka Akintunde)
1848	OMOPHARAN - KPHONODE (Children's Programme in Urhobo)
1700	GOVERNMENT AT GRASS-ROOTS
1730	IZABOSO - Edo Requests
1800	RESORTAL REQUEST
1830	SPORTS SPECIAL
1900	WORLD NEWS
1910	A RECORD FOR YOU
1916	ISLAMIC MODE OF WORSHIP JANAZAT - Funeral Ceremony in Islam
1930	OJOGBON ORI RADIO/IFOROWORO (Brains Trust)
2000	ORGAN MUSIC
2020	SUNDAY NIGHT SERVICE
2100	GIADO ZIRO (Edo Discussion)
2130	COMMUNITY HYMN SINGING
2200	NETWORK NEWS
2210	MUSIC OF OUR ZONE
2246	SPECIAL READING FROM THE HOLY QURAN
2300	MUSIC TO END THE DAY
2380	THE EPILOGUE
0000	PLEDGE NATIONAL ANTHEM & CLOSE DOWN

MONDAYS

0630	DRUM SIGNAL
0633	OPENING
0634	NATIONAL ANTHEM & PLEDGE
0638	PROGRAMME PARADE
0640	MORNING DEVOTION
0800	READING FROM THE HOLY KORAN
0800	ZONAL NEWS
0810	A TOTO A RERE
0818	BREAKFAST FIESTA -
0858	THE NIGERIAN VOTER
0700	NETWORK NEWS
0718	NEWS ANALYSIS
0718	A TOTO RERE
0820	BREAKFAST FIESTA
0800	NEWS HIGHLIGHTS
0803	NEWS IN EDO
0818	PROGRAMME PROMOTION (EDO)
0820	EKHARA (Edo Philosophy)
0830	IYANWEWA - Igalu Social Music
0848	JENGORAN
0800	NEWS HIGHLIGHTS
0803	NEWS IN IGBALA
0818	AGO ONILE O: CH-chet and
1000	NEWS HIGHLIGHTS
1003	NEWS IN URHORO
1100	NEWS HIGHLIGHTS
1103	NEWS IN YORUBA
1200	NEWS HIGHLIGHTS
1230	OVWIRORO-UREOBO - Discussion
1300	WORLD NEWS
1310	FROM THE EDITORIALS
1400	NEWS HIGHLIGHTS
1403	MUSIC WHILE YOU WORK
1800	ZONAL NEWS IN ENGLISH
1810	NEWS IN EDO
1820	PARTY POLITICAL BROADCAST/TOP TUNES
1600	NETWORK NEWS
1818	NEWS IN IGBALA
1828	PARTY POLITICAL BROADCAST/UGWAALU - Igalu requests
1700	NEWS HIGHLIGHTS
1703	NEWS IN URHORO
1718	PARTY POLITICAL BROADCAST/NI FAJI KELELE
1800	NEWS HIGHLIGHTS
1803	NEWS IN YORUBA
1818	PARTY POLITICAL BROADCAST/BA MI JO Yoruba Requests
1800	NEWS PARADE
1830	FEMININE FAIR
2000	ZONAL BULLETIN IN ENGLISH
2018	TOMORROW ON FRN
2030	PARTY POLITICAL BROADCAST/DOCUMENT OF HOPE
2100	NEWS HIGHLIGHTS
2130	OKHA - Story Telling in Edo
2148	MEET THE FRN CHOIR
2200	NETWORK NEWS
2218	ELI IGBA - Igalu Music
2230	IYAYIBENIKAO - EDO DEITIES
2300	MUSIC TO END THE DAY
0000	NEWS ROUND UP
0000	PLEDGE NATIONAL ANTHEM AND CLOSE DOWN

TUESDAYS

0830	DRUM SIGNAL
0833	OPENING
0834	NATIONAL ANTHEM & PLEDGE
0838	PROGRAMME PARADE
0840	MORNING DEVOTION
0850	EARLY MORNING SERMON
0800	ZONAL NEWS
0810	A TOTO A RERE
0818	MUSIC ALL THE WAY
0830	PARTY POLITICAL BROADCAST/MUSIC ALL THE WAY
0858	THE NIGERIAN VOTER
0700	THE NEWS
0710	NEWS COMMENTARY
0718	A TOTO A RERE
0720	MUSIC ALL THE WAY
0800	NEWS HIGHLIGHTS
0803	NEWS IN EDO
0818	PARTY POLITICAL BROADCAST/EKHARA - Edo Philosophy
0820	TOP HITS
0830	VOICE OF YOUTH
0848	IKUEKHA (Edo Children's Programme)
0900	NEWS HIGHLIGHTS
0903	NEWS IN IGBALA
0918	PARTY POLITICAL BROADCAST/EGHWEYA-WADO - Women's Programme in Urhobo
0948	ANNOUNCER'S CHOICE
1000	NEWS HIGHLIGHTS
1003	NEWS IN URHORO
1018	PARTY POLITICAL BROADCAST/IYANWEWA - Igalu Social Music
1030	EHARA WODIOTO - Urhobo Magazine
1100	NEWS HIGHLIGHTS
1103	NEWS IN YORUBA
1118	PARTY POLITICAL BROADCAST/ERE IGBALODE
1148	MUSIC OF OUR ZONE
1200	NEWS HIGHLIGHTS
1203	E KU ORO AJE
1300	WORLD NEWS
1310	EDITORIALS
1318	MIXED GRILL
1330	OVWIRORO - Urhobo Discussion (From Mon. 1230 hrs.)
1400	NEWS HIGHLIGHTS
1403	MUSIC WHILE YOU WORK
1800	ZONAL NEWS
1820	PARTY POLITICAL BROADCAST/INTERLUDE
1830	AGBAJO-OWO (From Sun. 1030hrs.)
1800	NETWORK NEWS
1810	FROM THE EDITORIALS
1818	NEWS IN IGBALA
1828	PARTY POLITICAL BROADCAST/EWEWO - Urhobo Requests
1700	NEWS HIGHLIGHTS
1703	NEWS IN URHORO
1718	PARTY POLITICAL BROADCAST/IGIOUTE - Edo Requests
1800	NEWS HIGHLIGHTS
1803	NEWS IN YORUBA

1818	PARTY POLITICAL BROADCASTS/REQUEST TIME
1900	NEWS PARADE
1930	ORA L'OKELE
2000	ZONAL BULLETIN IN ENGLISH
2010	TOMORROW ON FRN
2018	ALAGHODARO - Program Report in Edo
2030	PARTY POLITICAL BROADCASTS/PEOPLE & POLITICS
2045	EW E OYE (Chiefstaincy Tides) repeated Wed. at 1845 hrs.
2100	NEWS HIGHLIGHTS
2103	INTERLUDE
2110	READING FROM THE HOLY KORAN.
2120	EVENING WORSHIP IN EDO
2130	ITAN (Edo Proverbs) (Rept. Sat 1850 hrs)
2145	OSIA (Story telling in Urhobo)
2200	NETWORK NEWS
2210	NEWS ANALYSIS
2216	AKUNLEBO (Our debts)
2220	UKOLA WERE - Igala Magazine
2300	NEWS HIGHLIGHTS
2303	MUSIC TO END THE DAY
0000	NEWS ROUND UP
0006	PLEDGE, NATIONAL ANTHEM & CLOSE DOWN.

WEDNESDAYS

0530	DRUM SIGNAL
0533	OPENING
0534	NATIONAL ANTHEM AND PLEDGE
0536	PROGRAMME PARADE
0540	MORNING DEVOTION
0550	EARLY MORNING SERMON
0600	ZONAL NEWS
0610	A TOTO A RERE
0618	OWURO LAWA
0630	PARTY POLITICAL BROADCASTS/OWURO LAWA-OWURO LAWA CONTD.
0645	THE NIGERIAN VOTER
0700	NETWORK NEWS
0710	NEWS COMMENTARY
0718	A TOTO A RERE
0800	NEWS HIGHLIGHTS
0803	NEWS IN EDO
0818	PARTY POLITICAL BROADCASTS/EKHARA
0830	GOVERNMENT AT GRASS-ROOTS
0900	NEWS HIGHLIGHTS
0903	NEWS IN IGALA
0918	PARTY POLITICAL BROADCASTS/OWO NYA
0945	ZONAL HITS
1000	NEWS HIGHLIGHTS
1003	NEWS IN URHOB
1018	PARTY POLITICAL BROADCASTS/STAR TIME
1100	NEWS HIGHLIGHTS
1103	NEWS IN YORUBA
1118	PARTY POLITICAL BROADCASTS/ERE IGBALODE

1148	OLOKUN MUSIC
1200	NEWS HIGHLIGHTS
1203	OBEKI - Chit-chat-music with Market women In Edo.
1300	WORLD NEWS
1310	EDITORIALS
1318	MELODY TIME
1400	NEWS HIGHLIGHTS
1403	MUSIC WHILE YOU WORK
1600	ZONAL NEWS IN ENGLISH
1610	NEWS IN EDO
1620	PARTY POLITICAL BROADCASTS/HOME-WARD BOUND
1600	NETWORK NEWS
1810	FROM THE EDITORIALS
1818	NEWS IN IGALA
1828	PARTY POLITICAL BROADCASTS/INTERLUDE
1830	ARTISTE PLAYTIME
1846	IKUEKHA E - Children's Prog. in Edo (From Tues. 0245 hrs.)
1700	NEWS HIGHLIGHTS
1703	NEWS IN URHOB
1718	PARTY POLITICAL BROADCAST/UGWA-ALU - Igala requests
1730	ZONAL BRIDGE
1745	OMOPHARAN KPONOG E - Urhobo Children's Programme (Rept. from Sun. 1645 hrs.)
1800	NEWS HIGHLIGHTS
1803	NEWS IN YORUBA
1815	PARTY POLITICAL BROADCASTS/EHARA WODIOTO - Urhobo Magazine
1845	EW E OYE (From Tues. 2045 hrs.)
1900	NEWS PARADE
1930	IYANIWURA - Women's Magazine
2000	ZONAL BULLETIN IN ENGLISH
2010	TOMORROW ON FRN
2018	ISE - Urhobo Proverbs meanings and usages
2030	PARTY POLITICAL BROADCASTS/DOCUMENT OF HOPE

2045	CANDID THEATRE - Social Drama
2100	NEWS HIGHLIGHTS
2103	INTERLUDE
2110	READING FROM THE HOLY KORAN
2120	EVENING WORSHIP
2130	OGBON OGBON (An elderly man of women talks about his/his experience of life)
2200	NETWORK NEWS
2210	NEWS ANALYSIS
2218	ATEWOLABALA (Focus on Yoruba customs which seem to be dying out.)
2230	IYANEWA - Igala Music
2300	NEWS HIGHLIGHTS
2303	KA SUN RE
0000	NEWS ROUND UP
0005	PLEDGE NATIONAL ANTHEM AND CLOSE DOWN

THURSDAYS

0530	DRUM SIGNAL
0533	OPENING
0534	NATIONAL PLEDGE AND ANTHEM
0535	PROGRAMME PARADE
0540	MORNING DEVOTION
0550	READING FROM THE HOLY KORAN
0600	ZONAL NEWS
0610	A TOTO A RERE
0615	PARTY POLITICAL BROADCASTS/RHYTHM AT DAWN
0655	THE NIGERIAN VOTER
0700	NETWORK NEWS
0710	NEWS COMMENTARY
0715	A TOTO A RERE
0720	RHYTHM AT DAWN
0800	NEWS HIGHLIGHTS
0803	NEWS IN EDO
0818	PARTY POLITICAL BROADCASTS/IYA OKO



Diran Majero, Announcer, FRN, Ibadan.

FRCN:IBADAN

PROGRAMME SCHEDULE

575KHz - 522 metres

0630 - 0005 hrs

0830 ANNOUNCER'S CHOICE
0845 ART,STE PLAYTIME
0900 NEWS HIGHLIGHTS
0905 PLEDGE NATIONAL ANTHEM & CLOSE DOWN

1700
1703
1715
1730

NEWS HIGHLIGHTS
NEWS IN URHOBO
PARTY POLITICAL BROAD-CASTS/KUETAA - EDO DRAMA

0900
0903
0915

NEWS HIGHLIGHTS
NEWS IN IGALA
PARTY POLITICAL BROAD-CASTS/FOR YOU AT HOME

FRIDAYS

0834 DRUM SIGNAL
0837 OPENING
0834 NATIONAL ANTHEM AND PLEDGE

1745
1800
1803
1815

INTERLUDE
ORIN ODUN ILE WA
NEWS HIGHLIGHTS
NEWS IN YORUBA
PARTY POLITICAL BROAD-CASTS/AGBE ONIJE AMODUN ZONAL BRIDGE

1000
1003
1015

NEWS HIGHLIGHTS
ORIN ODUN ILE WA (From Friday 1745 hrs.)
VOICE OF YOUTH
NEWS HIGHLIGHTS
NEWS IN YORUBA
PARTY POLITICAL BROAD-CASTS/GIADO ZIRO - Discussion Prog. in Edo (From Sun. 2100hrs.)

0835 PROGRAMME PARADE
0840 MORNING DEVOTION
0850 JUMAT TALK
0900 ZONAL NEWS
0910 A TOTO A RERE

1830
1845
1900
1930
1945

PROGRESS REPORT
NEWS PARADE
OHIKA - Igala Story Telling
CHRISTIAN COMMENT
ZONAL BULLETIN IN ENGLISH

1030
1045
1100
1103
1115

ODUN ILE WA (From Friday 1745 hrs.)
VOICE OF YOUTH
NEWS HIGHLIGHTS
NEWS IN YORUBA
PARTY POLITICAL BROAD-CASTS/EMININE FAIR From Mon. 1930hrs.)

0915 PARTY POLITICAL BROAD-CASTS/NEW COURT ROAD SPECIAL

2000
2110
2015
2030

TOMORROW ON FRCN IBADAN
ISE - Urhobo Proverbs
PARTY POLITICAL BROAD-CASTS/DEAR SIR

1130
1145
1200
1203

ANNOUNCER'S CHOICE
SPORTS IN THE NEWS
NEWS HIGHLIGHTS
BIG BEAT

0700 NETWORK NEWS
0710 NEWS COMMENTARY
0715 A TOTO A RERE
0720 NEW COURT ROAD SPECIAL CONTD.

2045
2100
2103
2105

IYANEWA - Igala Social Music
NEWS HIGHLIGHTS
PROGRAMME PROMOTION
EVENING WORSHIP

1300
1310
1315
1400

WORLD NEWS
FROM THE EDITORIALS
REGGAE TIME
NEWS HIGHLIGHTS
HOW GO DE GO? (Request in Plgin English)

0800 NEWS HIGHLIGHTS
0803 NEWS IN EDO
0815 PARTY POLITICAL BROAD-CASTS/EKHARA - EDO Philo-ophy

2115
2120
2130

SPECIAL READING FROM THE HOLY QURAN
OLUKA - Discussion Programme in Igala (From Thurs. 1030hrs.)

1403
1430
1600

FEYIKOGBON - NATIONAL NEWS IN ENGLISH
NEWS IN EDO AND IGALA
ANNOUNCER'S CHOICE
NEWS IN URHOBO AND YORUBA

0820 INTERLUDE
0830 IJOBA IBILE
0900 NEWS HIGHLIGHTS
0903 NEWS IN IGALA
0915 PARTY POLITICAL BROAD-CASTS/E KU ORQ AJE

2200
2210
2215
2230

NETWORK NEWS
NEWS ANALYSIS
EDO SOCIAL MUSIC
ALO MI ALO - Story Telling in Yoruba

1600
1610
1615
1630
1640

NETWORK NEWS
FROM THE EDITORIALS
ERE IGBALODE
SPORTS PAVILLION
ZONAL BRIDGE

1000 NEWS HIGHLIGHTS
1003 NEWS IN URHOBO
1015 PARTY POLITICAL BROAD-CASTS/ERE ABALAYE

2245
2300
2350

SERENADE
JUMAT SERMON FOR TODAY
AL - AISH (Today's Spiritual Diet)

1600
1610
1615
1630

NETWORK NEWS
FROM THE EDITORIALS
ERE IGBALODE
SPORTS PAVILLION
ZONAL BRIDGE

1045 ERE IGBALODE
1100 NEWS HIGHLIGHTS
1103 NEWS IN YORUBA
1115 PARTY POLITICAL BROAD-CASTS/SAKPADE - Edo Trad-tional Music

0000
0005

NEWS ROUND UP
PLEDGE NATIONAL ANTHEM AND CLOSE DOWN

1850
1900
1910

ITESIWAJU (Progress Report in Yoruba)

1130 MAGIC MOMENT
1200 NEWS HIGHLIGHTS
1203 ERE IGBALODE CONTD.
1230 PRELUDE TO JUMAT SERVICE

0535
0540
0650
0600
0610

PROGRAMME SUMMARY
MORNING DEVOTION
EARLY MORNING SERMON
NATIONAL NEWS
A TOTO A RERE

1925
1930
2000
2010
2018
2030

PICK-A-DISC
SOUNDS LIKE THE POLICE
NEWS IN ENGLISH
TOMORROW ON FRCN IBADAN
POLITICAL ROUND-UP
AGBE ONIJE AMODUN - Par-mens Programme in Yoruba

1253 2ND CALL TO PRAYER
1303 JUMAT SERVICE
1330 WORLD NEWS
1340 FROM THE NIGERIAN EDITO-RIALS

0610
0615
0630

1ST CALL TO PRAYER, A Special Reading from the Holy Quran, Muslim Religious

2100
2103
2110
2120
2130

NEWS HIGHLIGHTS
INTERLUDE
MUSLIM SERMON
EVENING WORSHIP
FOCUS: Discussion on Current Affairs

1346 MUSIC WHILE YOU WORK
1600 WORLD NEWS IN ENGLISH
1810 EDO NEWS
1820 PARTY POLITICAL BROAD-CASTS/JUMP FOR JOY

0655
0700
0710
0715
0720
0720

THE NIGERIAN VOTER
NETWORK NEWS
NEWS COMMENTARY
A TOTO A RERE
AJIKI HIGHLI

2200
2210
2215
2230

NEWS HIGHLIGHTS
MUKUMUKE PARTY TIME/
SATURDAY NIGHT OUT

1835 ZONAL BRIDGE
1850 THE WAY I SEE IT
1900 NETWORK NEWS
1910 FROM THE EDITORIALS
1915 NEWS IN IGALA
1925 PARTY POLITICAL BROAD-CASTS/OJOGBON ORI REDIO/IFOROWORO

0800
0803
0815
0820
0830
0645

NEWS IN EDO
PARTY POLITICAL BROAD-CASTS/EKHARA - Edo Philo-ophy
TOP TUNES
DEAR SIR

2300
2303
0000
0005

NEWS HIGHLIGHTS
MUKUMUKE PARTY TIME/
SATURDAY NIGHT OUT
NEWS ROUND-UP
PLEDGE NATIONAL ANTHEM AND CLOSE DOWN

SATURDAYS

1346 MUSIC WHILE YOU WORK
1600 WORLD NEWS IN ENGLISH
1810 EDO NEWS
1820 PARTY POLITICAL BROAD-CASTS/JUMP FOR JOY

0655
0700
0710
0715
0720
0720

JENGBORAN - Children's Pro-gramme in Yoruba (From Mon. 0845 hrs.)

2200
2210
2215
2230

NEWS HIGHLIGHTS
MUKUMUKE PARTY TIME/
SATURDAY NIGHT OUT
NEWS ROUND-UP
PLEDGE NATIONAL ANTHEM AND CLOSE DOWN

OUR RATE CARD

For Your Effective Advertising

AFTER years of quiet circulation during which a systematic study was undertaken to ascertain readers' tastes and advertisers' requirements, we are proud to present today a magazine which, we hope, has successfully translated into form your highly esteemed ideas and suggestions.

The current editions of RADIO/TV TIMES reveal a history of steady progress and improvement in quality, standard and scope. In fact there is every ground now for one to say "Oh Yes! The RADIO/TV TIMES has made it!" We are not stopping at that either.

We have more reasons than many a publisher to cry over "INFLATION" and rising production costs. But where "Satisfaction First" (for readers and advertisers) is the over-riding principle, profit occupies only the next place in our policy.

This explains why, in spite of the extremely keen competition in the field of commercial advertising, RADIO/TV TIMES can still afford to accept advertisement at a rate below one kobo to reach one thousand readers. What is more, when you consider the aggregate positive effect of an advertisement in RADIO/TV TIMES, supplementing your combinations on radio and television, the resultant massive impact is quite obvious.

The advertisement rates tabulated below took effect from 1st of April, 1977. We look forward to your substantial patronage as soon as possible, while assuring you of prompt satisfaction always.

I. THE JOURNAL: The "Radio/TV Times" is the monthly programme journal covering all the radio and television stations, published by the Federal Radio Corporation. The

Journal is now 25 years old on the market. As a supplementary guide to programmes' schedule, the readership of this journal is understandably tied up with the radio and television audience — a well balanced cross-section of the society, representative of all ages, sexes, income brackets, intellectual levels and tastes. That the current size of this audience has grown into millions is now common knowledge.

Apart from highlighting Radio/TV programmes, the journal seeks to generate public interest in healthy social events, as well as local, national and international issues, with emphasis on Africa. But while taking in its strides the wide range of programmes offered by the radio and television, "Radio/TV Times" is breaking new grounds of its own to embrace a wider range of interests in order to provide greater satisfaction for its ever expanding readership.

Public demand for the "Radio/TV Times" in recent times has been so extensive that the possibility of stepping up the current circulation in stages to keep pace ultimately with the radio and television audience is being actively explored.

II. PUBLICATION TIMING: 1st day of month of issue.

III. TECHNICAL DATA: ACTUAL SIZE:
21 x 28cm

ADVERT AREA: (3 Column-page of 13 lines each)

Full Page	17.5 x 24 cm
2 Full Columns	11.5 x 24 cm
1 Full Column	5.5 x 24 cm
1 Half page across	17.5 x 12 cm
2 Half Columns	11.5 x 12 cm
1 Half Column	5.5 x 12 cm

iv. PRINTING: Web offset lithographic process on 90 gsm Art paper cover and 60 gsm Bond paper text.
COLOURS: Full Colours — cover and text.

v. CIRCULATION: Current 25,000
Projected (short-term) 150,000
Projected (long-term) 500,000

vi. READERSHIP: Current survey shows that there are about ten readers to a copy. These include family units, educational and other institutions, working class elements, business-men and industrialists, of all ages, sexes and status. Aggregate readership therefore is about 250,000 at present.
vii. DISTRIBUTION: The "Radio/TV Times" is circulated through the 19

States of the Federation, as well as the English speaking countries in Africa and Europe. Complementary copies are also circulated to Radio and Television Stations in non English speaking Countries of the World.

viii. ADVERTISEMENT RATES: A.

Run of Paper (Black/White)	
Full page	₦250.00
2 Columns	₦180.00
1 Column	₦120.00
Half page	₦150.00
2 Half Columns	₦120.00
1 Half Column	₦80.00
Centre Spread	₦600.00
Double pages	₦500.00
Full page R.O.P.	
(Colour)	₦360.00

B. GUARANTEED POSITIONS (COLOUR)

Full page I.F.C.	₦480.00
Full page I.B.C.	₦480.00
Full page O.B.C.	₦550.00
Centre Spread	₦900.00

Cost per thousand: on 25,000
(Current) = 1k on 50,000 (Projected) = 1/6k

ix. DISCOUNTS:

- 15% Agency commission will be allowed to bona fide Advertising Agencies.
- 10% Frequency discount will be allowed for twelve consecutive insertions.
- 2½% Frequency discount will be allowed for six consecutive insertions.

x. GENERAL CONDITIONS: All orders for advertisements in "Radio/TV Times" are accepted on the express terms that:

- They are subject to cancellation without notice at the discretion of the Corporation or its authorised agents. In that event any money received in respect of such cancellation will be refunded.
- The Corporation may make necessary alteration to advertisement to ensure its conformity with the standards and style of "Radio/TV Times".
- The rates and terms quoted are subject to review as occasions demand.
- Advertisement copies and materials, as well as notices of cancellation or amendment are received 30 clear days prior to date of publication.

All correspondence should be directed to: The Commercial Manager (Publications) F.R.C.N 45 Martins Street, Private Mail Bag 12504, Lagos Nigeria, Telephone: 636209

RIMA RADIO

PROGRAMME SCHEDULE

557KHz - 538 metres
6.196MHz - 49 metres

0530 - 0005 hrs

Sunday

0526	STATION CALL SIGNAL	1615	SCHOOL CHALLENGE (Rept. on Wed. 0930)	0815	MENTS HANTSI YA DUBI LUDAYI (COMM)
0529	NATIONAL ANTHEM, PLEDGE - OPENING ANNOUNCEMENT	1645	HAUSA BY RADIO ADULT EDUCATION AND EXTENSION SERVICE SAMURU ZARIA (Rept. on Thursday 1815)	0900	NEWS OF THE HOUR
0530	READING FROM THE HOLY KORAN	1700	NEWS ON THE HOUR	0903	RELAX WITH
0545	PROGRAMME SUMMARY (ENGLISH - HAUSA)	1703	PUBLIC SERVICE ANNOUNCEMENTS	0930	KOWA DA KIWON DA YA KARBE SHI (Rept. from Fri. 1130)
0600	NEWS AT DAWN	1715	MU ZAGA JAHARMU	1000	TAKAITATTUN LABARU
0603	MORNING MELODIES (COMM)	1800	MAGAZINE PROGRAMME ON EVENTS AROUND SOKOTO STATE (Rept. on Tues. 1315)	1003	BARKA DA HANTSI
0645	THE WEEK AHEAD	1803	TAKAITATTUN LABARU	1030	DON SAMARI (Rept. on Wed. 1430)
0700	THE NEWS	1808	ADDU'AR MUSULNCI EVENING PRAYERS IN ARABIC AND HAUSA	1100	NEWS ON THE HOUR
0715	LET'S WORSHIP	1830	RELIGIOUS SONGS	1103	KADE - KADENMU
0800	TAKAITATTUN LABARU	1830	RABIN SA'AR DAN KWAIRO	1130	FEMININE FORUM (Rept. Fri. 2130)
0803	DANODANO JIRAN RABO - WEEKLY HIGHLIGHTS IN HAUSA	1900	THE NEWS	1200	TAKAITATTUN LABARU
0815	BARKA DA LAHADI (COMM)	1910	INTERLUDE	1203	MUSIC WHILE YOU WORK (COMM)
0900	SUNDAY MORNING REQUEST PROGRAMME IN HAUSA	1915	TATSUNNIYA FOLK TALES IN HAUSA (Rept. from Friday 2115)	1300	NEWS SUMMARY (ENGLISH/HAUSA)
0903	NEWS ON THE HOUR	1930	ZABI SONKA (COMM) REQUEST PROGRAMME IN HAUSA	1310	INTERLUDE
0915	KOWACE TAMBAYA: ANSWERS TO LISTENERS QUESTIONS (Rept. on Wed. 1645)	2000	STATE NEWS (ENGLISH + HAUSA)	1315	ENGLISH DRAMA
0930	YARO MASOMIN MUTUN: CHILDREN'S PROGRAMME, IN HAUSA, (Rept. from Thursday 1730)	2020	PERSONAL PAID ANNOUNCEMENTS (COMM)	1345	'FIFTEEN MINUTES WITH' NEWS ON THE HOUR
1000	TAKAITATTUN LABARU	2030	GOGGE MUSIC	1400	ANNOUNCER'S CHOICE
1003	OUR MUSICAL HERITAGE (Rept. on Wed. 1703)	2100	NEWS ON THE HOUR	1415	TREASURES OF OUR STATE (Rept. from Thursday 2130)
1030	YOUTH FORUM	2103	MUSIC ON RECORDS	1445	LABARUM WASANNI
1100	NEWS ON THE HOUR	2115	NEWS LETTER (Rept. from Sat. 1915)	1500	P. P. A. (COMM)
1103	HOUSEWIVES SPECIAL - TITBITS AND MUSIC FOR WOMEN (Rept. on Wed. 2103)	2130	TARIHIM ANNABAWA HISTORY OF PROPHETS IN HAUSA, (Rept. from Wed. 1730)	1530	STATE NEWS
1130	TWENTY QUESTIONS (Rept. on Wed. 1815)	2200	THE NEWS	1650	P. P. A. (COMM)
1200	TAKAITATTUN LABARU	2215	SPORTS NEWS (Rept. from Sat. 1715)	1600	THE NEWS
1203	DON IYALANKU	2230	WA'AZIN MUSULNCI (Rept. from Friday 1815)	1610	INTERLUDE
1245	A REQUEST PROGRAMME FOR ALL THE FAMILY IN HAUSA.	2300	TAKAITATTUN LABA-RU	1615	ADDIMU INDALLAHI (Rept. on Thursday 1315)
1300	ZABEN KAURA BISCUIT (COMM)	2303	MUKWANA LAFIYA (COMM)	1645	WASIKA DAGA SOKOTO (Rept. from Sun. 1315)
1310	NEWS SUMMARY (ENGLISH + HAUSA)	2345	READING FROM THE HOLY KORAN	1700	NEWS ON THE HOUR
1310	INTERLUDE	2400	NEWS ROUND UP (ENGLISH + HAUSA)	1703	PUBLIC SERVICE ANNOUNCEMENT
1315	WASIKA DAGA SAKWATO (Rept. on Wed. 1845)	0010	CLOSE DOWN	1715	YOURS EVER (COMM)
1330	MUNA FATA	0526	STATION CALL SIGNAL	1800	TAKAITATTUN LABARU
1400	LISTENERS LETTERS IN HAUSA (Rept. on Wed. 1030)	0529	NATIONAL ANTHEM, PLEDGE + OPENING ANNOUNCEMENT	1803	ADDU'AR MUSULNCI
1400	ACROSS THE NATION	0530	READING FROM THE HOLY KORAN	1808	RELIGIOUS SONGS
1500	PERSONAL PAID ANNOUNCEMENT (COMM)	0545	PROGRAMME SUMMARY (ENGLISH + HAUSA)	1815	MIXED BAG (Rept. on Wed. 1815)
1530	STATE NEWS (ENGLISH AND HAUSA)	0600	NEWS AT DAWN	1830	SOFT TUNES
1550	PERSONAL PAID ANNOUNCEMENTS (COMM)	0605	RIMA SUNRISE (COMM)	1900	THE NEWS PONORAMA
1600	THE NEWS	0700	THE NEWS	1930	ZABI SONKA (COMM)
1610	INTERLUDE	0715	RIMA SUNRISE (CONTED.)	2000	STATE NEWS (ENGLISH/HAUSA)
		0730	MAKADIN SAFE	2030	KOTSO MUSIC
		0800	TAKAITATTUN LABARU	2100	NEWS ON THE HOUR
		0803	PUBLIC SERVICE ANNOUNCE-	2103	WAKOKIN ILMI
				2115	ILMI FITILAR LUNNIYA (Rept. on Thursday 1445)
				2130	KACICI KACICI (Rept. on Thur. 1030)
				2200	THE NEWS AND WEATHER NEWS
				2215	'TSUR YA FITSAMAU'
				2230	INDA KAMAR (Rept. on Wed. 1330)
				2300	TAKAITATTUN LABARU
				2303	MUKWANA LAFIYA (COMM)

Monday

RIMA RADIO

PROGRAMME SCHEDULE

557KHz - 538 metres
6.195MHz - 49 metres

0530 - 0005 hrs

- 2445 READING FROM THE HOLY KORAN
2400 NEWS ROUND - UP (ENGLISH/HAUSA)
0010 CLOSE DOWN

Tuesday

- 0526 STATION CALL SIGNAL
0529 NATIONAL ANTHEM, PLEDGE + OPENING ANNOUNCEMENT
0530 READING FROM THE HOLY KORAN
0545 PROGRAMME SUMMARY (ENGLISH/HAUSA)
0600 NEWS AT DAWN
0605 RIMA SUNRISE (COMM)
0700 THE NEWS
0715 RIMA SUNRISE (Conted.)
0730 MAKADIN SAFE
0800 TAKAITATTUN LABARU
0803 PUBLIC SERVICE ANNOUNCEMENTS
0815 HANTSI YA DUBI LUDAYI (Comm)
0900 NEWS ON THE HOUR
0903 RELAX WITH
0930 MARABA DA BAKI (Rept. from Friday 1430)
1000 TAKAITATTUN LABARU
1003 BARKA DA HANTSI
1030 DAKKARCI MAGAZINE (Rept. from Sat. 1430)
1100 NEWS ON THE HOUR
1103 MUSIC FROM THE ORIENT
1130 HAUSA WRITTEN SONGS - FEATURING
1200 TAKAITATTUN LABARU
1203 MUSIC WHILE YOU WORK (COMM)
1300 NEWS SUMMARY (ENGLISH/HAUSA)
1310 INTERLUDE
1315 MU ZAGA JIHARMU (Rept. from Sunday 1715)
1400 NEWS ON THE HOUR
1403 KIDAN NOMA
1430 HIMMA BATA GA RAGGO (Rept. on Sat. 1030)
1500 PERSONAL PAID ANNOUNCEMENTS (COMM)
1530 STATE NEWS (ENGLISH/HAUSA)
1550 P. P. A. (Comm)
1600 THE NEWS
1610 INTERLUDE
1615 CHILDREN'S BAZAAR (Rept. on Friday 1730)
1645 HIKIMAR MAWALLAFA (Rept. on Thurs. 2115)
1700 NEWS ON THE HOUR
1703 PUBLIC SERVICE ANNOUNCEMENTS
1715 SANA'A SA'A (Rept on Thursday 1345)
1730 HASKEN GIDA (Rept. on Sat. 0930)

- 1800 TAKAITATTUN LABARU
1803 ADDU'AR MUSULUNCI
1808 RELIGIOUS SONGS
1815 KWARYAR KIKA
1830 MAKADIN MAKO
1900 THE NEWS PANORAMA
1930 TSARABAR SAKKWATO (COMM)
2000 STATE NEWS (ENGLISH/HAUSA)
2020 P. P. A. (COMM)
2030 KALANGU MUSIC
2100 NEWS ON THE HOUR
2103 SAREWA MUSIC
2115 YAU DA GOBE (Rept. Friday 0915)
2200 THE NEWS
2215 MIXED MUSIC ON RECORDS
2230 ASALIN CARURUWANMU (Rept. on Fri. 1030)
2300 TAKAITATTUN LABARU
2303 MUKWANA LAFIYA (Comm)
2345 READING FROM THE HOLY KORAN
2400 NEWS ROUND - UP (ENGLISH/HAUSA)
0010 CLOSE DOWN

- 1310 INTERLUDE
1315 TARIHIN ISLAM (Rept. on Fri. 1716)
1330 INDA KA-MAR (Rept. From Mon. 2230)
1400 NEWS ON THE HOUR
1403 OUR MUSICAL HERITAGE (Rept. from Sunday 1003)
1430 DON SAMARI (Rept. From Mon. 1030)
1500 PERSONAL PAID ANNOUNCEMENTS (COMM)
1530 STATE NEWS (ENGLISH/HAUSA)
1550 P. P. A. (COMM)
1600 THE NEWS
1610 INTERLUDE
1615 TWENTY QUESTIONS (Rept. Sun 1130)
1645 KOWACE TAMBAYA (Rept. from Sunday 0915)
1700 NEWS ON THE HOUR
1703 PUBLIC SERVICE ANNOUNCEMENTS
1715 LABARU WASANNI (Rept. From Monday 1445)
1730 TARIHIN ANNABAWA (Rept. from Sunday 2130)
1800 TAKAITATTUN LABARU
1803 ADDU'AR MUSULUNCI
1808 RELIGIOUS SONGS
1815 MIXED BAG (Rept. from Mon. 1815)

Wednesday

- 0526 STATION CALL SIGNAL
0529 NATIONAL ANTHEM, PLEDGE + OPENING ANNOUNCEMENT
0530 READING FROM THE HOLY KORAN
0545 PROGRAMME SUMMARY (ENGLISH/HAUSA)
0600 NEWS AT DAWN
0605 RIMA SUNRISE (COMM)
0700 THE NEWS
0715 RIMA SUNRISE (CONTD.)
0730 MAKADIN SAFE
0800 TAKAITATTUN LABARU
0803 PUBLIC SERVICE ANNOUNCEMENTS
0815 HANTSI YA DUBI LUDAYI (COMM)
0900 NEWS ON THE HOUR
0903 RELAX WITH
0930 SCHOOL CHALLENGE (Rept. from Sunday 1615)
1000 TAKAITATTUN LABARU
1003 BARKA DA HANTSI
1030 MUNA FATA (Rept. From Sun 1330)
1100 NEWS ON THE HOUR
1103 SAKON KAWA (COMM) (Rept. Sat. 1103)
1130 DAGA BAKIN MAI ITA - FEATURING
1200 TAKAITATTUN LABARU
1203 MUSIC WHILE YOU WORK (COMM)
1300 NEWS SUMMARY (ENGLISH/HAUSA)

- 1830 PLEASE BELONG
1900 NEWS PANORAMA
1930 ZABI SONKA
2000 STATE NEWS (ENGLISH/HAUSA)
2020 P. P. A. (COMM)
2030 KUKUMA MUSIC
2100 NEWS ON THE HOUR
2103 HOUSEWIVES SPECIAL (Rept. from Sunday 1130)
2130 SHIRIN FATAWA (Rept. on Sat. 1130)
2200 THE NEWS
2215 MID-WEEK REQUEST (COMM)
2345 READING FROM THE HOLY KORAN
2400 NEWS ROUND - UP (ENGLISH/HAUSA)
0010 CLOSE DOWN

Thursday

- 0526 STATION CALL SIGNAL
0529 NATIONAL ANTHEM, PLEDGE + OPENING ANNOUNCEMENTS
0530 READING FROM THE HOLY KORAN
0545 PROGRAMME SUMMARY (ENGLISH/HAUSA)
0600 NEWS AT DAWN
0605 RIMA SUNRISE (COMM)
0700 THE NEWS
0715 RIMA SUNRISE (CONT.)
0730 MAKADIN SAFE

RIMA RADIO

PROGRAMME SCHEDULE

557KHz - 538 metres
6.195MHz - 49 metres

0530 - 0005 hrs

Friday

Saturday

0800	TAKAITATTUN LABARU	0526	STATION CALL SIGNAL	0526	STATION CALL SIGNAL
0803	PUBLIC SERVICE ANNOUNCEMENTS	0529	NATIONAL ANTHEM, PLEDGE + OPENING ANNOUNCEMENT	0529	NATIONAL ANTHEM, PLEDGE + OPENING ANNOUNCEMENT
0815	HANTSI YA DUBI LUDAYI (COMM)	0530	READING FROM THE HOLY KORAN	0530	READING FROM THE HOLY KORAN
0900	NEWS ON THE HOUR	0545	PROGRAMME SUMMARY (ENGLISH/HAUSA)	0545	PROGRAMME SUMMARY (ENGLISH/HAUSA)
0903	RELAX WITH - DATSONUWAR ZUMA - (Rept from Saturday 2130)	0600	NEWS AT DAWN	0600	NEWS AT DAWN
0930	TAKAITATTUN LABARU	0700	THE NEWS	0605	WEEKEND SPECIAL (COMM)
1000	RARKA DA HANTSI	0730	MAKADIN SAFE	0700	THE NEWS
1003	KACICI KACICI (Rept. from Mon. 2130)	0800	TAKAITATTUN	0730	MAKADIN SAFE
1030	NEWS ON THE HOUR	0900	NEWS ON THE HOUR	0800	TAKAITATTUN LABARU
1100	TSUR YAFI TSAMAU	0915	YAU DA GOBE (Rept. from Tues. 2115)	0803	PUBLIC SERVICE ANNOUNCEMENTS
1103	MU HADU A DADALA (Rept. on Sat. 1830)	1000	TAKAITATTUN LABARU	0815	HANTSI YA DUBI LUDAYI
1115	TAKAITATTUN LABARU	1030	ASALIN GARUTUWANMU (Rept. from Tuesday 2230)	0900	NEWS ON THE HOUR
1200	MUSIC WHILE YOU WORK (COMM)	1100	NEWS ON THE HOUR	0903	MUSHAKATA
1203	NEWS SUMMARY (ENGLISH/HAUSA)	1130	KOWA DA KIWON DA YA KARBRE SHI	0930	HASKEN GIDA (Rept. on Tues. 1730)
1300	INTERLUDE	1200	TAKAITATTUN LABARU	1000	TAKAITATTUN LABARU
1310	ADDINU INDALLAHI (Rept. from Monday 1615)	1203	MUSIC WHILE YOU WORK (COMM)	1030	HIMMA BATA GA RAGGO (Rept. on Tuesday 1430)
1315	SANA'A SA'A (Rept. from Tue. 1715)	1300	NEWS SUMMARY (ENGLISH/HAUSA)	1100	NEWS ON THE HOUR
1345	NEWS ON THE HOUR	1330	UWAR GIDA GA GORON JUMUA	1130	SHIRIN FATAWA (Rept. from Wed. 2130)
1400	ZABEN MAI GABATARWA	1400	NEWS ON THE HOUR	1200	TAKAITATTUN LABARU
1403	RA'AYIN MATA (Rept. on Sat. 1730)	1403	MUSIC FROM OTHER STATES -	1203	SATURDAY JUMP (COMM)
1415	ILMI FITILAR DUNIYA (Rept. from 2110)	1430	MARABA DA BAKI (Rept. on Tuesday 0930)	1300	NEWS SUMMARY (ENGLISH/HAUSA)
1445	PERSONAL PAID ANNOUNCEMENTS (COMM)	1500	STATE NEWS (ENGLISH/HAUSA)	1310	INTERLUDE
1500	STATE NEWS (ENGLISH/HAUSA)	1500	THE NEWS	1403	KADE - KADENMU
1530	NEWS	1615	WA'AZIN MUSULUNCI (Rept. on Sunday 2230)	1430	DAKARCI MAGAZINE (Rept. on Tuesday 1030)
1600	YOUTH FORUM (Rept. on Sunday 1030)	1645	MIXED MUSIC ON RECORDS	1500	PERSONAL PAID ANNOUNCEMENTS (COMM)
1630	NEWS ON THE HOUR	1700	NEWS ON THE HOUR	1530	STATE NEWS (ENGLISH/HAUSA)
1700	'TSUR YA FI TSAMAU'	1715	TARIHIN ISLAM (Rept. from Wed. 1315)	1600	P. P. A. (COMM)
1715	TAKAITATTUN LABARU	1730	CHILDRENS BAZAAR (Rept. from Tues. 1615)	1615	THE NEWS
1800	KWARYAR KIRA - Pro.	1800	ADDU'AR MUSULUNCI	1615	MU HADU A FADALA (Rept. from Thursday 1115)
1815	ENGLISH DRAMA	1830	AT YOUR REQUEST (COMM)	1700	NEWS ON THE HOUR
1830	THE NEWS PANORAMA	1900	NEWS PANORAMA	1715	SPORTS NEWS (Rept. on Sunday 2235)
1900	ZABI SONKA (COMM)	1930	ZABI SONKA (COMM)	1730	RA'AYIN MATA (Rept. from Thursday 1415)
1930	STATE NEWS (ENGLISH/HAUSA)	2000	STATE NEWS (ENGLISH/HAUSA)	1800	TAKAITATTUN LABARU
2000	TAUSHI MUSIC	2020	P. P. A. (COMM)	1808	RELIGIOUS SONGS
2030	THE NEWS ON HOUR	2030	GARAYA MUSIC	1830	DAGA BAKIN MAI ITA (Rept. on Wed. 1130)
2110	TSUR YAFI TSAMAU	2100	NEWS ON THE HOUR	1900	THE NEWS
2103	HIKIMAR MAWALIAFA (Rept. from Tuesday 1645)	2103	ZABEN MAI GABATARWA	1915	NEWS LETTER (Rept. on Sun. 2115)
2115	TREASURES OF OUR STATE (Rept. on Monday 1415)	2130	FEMININE FORUM (Rept. on Monday 1130)	1930	ZABI SONKA
2200	THE NEWS	2200	THE NEWS	2000	STATE NEWS (ENGLISH/HAUSA)
2215	MIXED MUSIC ON RECORDS	2300	TAKAITATTUN LABARU	2030	KUNTIGI MUSIC
2300	TAKAITATTUN LABARU	2345	READING FROM THE HOLY KORAN	2100	NEWS ON THE HOUR
2345	READING FROM THE HOLY KORAN	2400	NEWS ROUND - UP (ENGLISH/HAUSA)	2103	ANNOUNCER'S CHOICE
2400	NEWS ROUND - UP (ENGLISH/HAUSA)	0010	CLOSE DOWN	2200	THE NEWS
0010	CLOSE DOWN			2300	TAKAITATTUN LABARU
				2345	READING FROM HOLY KORAN
				2400	NEWS ROUND - UP (ENGLISH/HAUSA)
				0010	CLOSE DOWN



FRCN

METER BANDS

You can receive our transmissions throughout the country on the following Short Wave frequencies. (Medium Wave is limited to its locality of transmission).

FRCN – Lagos

4.99 MHz.(60 Meters) Short Wave
7.275 MHz.(41 Meters) Short Wave
1088 KHz (276 Meters) Medium Wave
92.936 MHz Frequency Modulated (FM)

**FRC-2 (AM/FM Stereo
Lagos area only)**

97.66 MHz (FM Stereo)
1458 KHz (Medium Wave)

FRCN – ENUGU

6.025 MHz (49 Meters) Short Wave
4.750 MHz (60 Meters) Short Wave
621 KHz (403 Meters) Medium Wave

FRCN – KADUNA

6.050 MHz (49 Meters) Short Wave
657 KHz (457 Meters) Medium Wave

FRCN – IBADAN

6.050 MHz (49 Meters) Short Wave
657 KHz (457 Meters) Medium Wave
575 KHz (522 Meters) Medium Wave

Please buy the Monthly RADIO/TV Times for details of Programme schedules and other related information.