

Stop That Pidgin English

AS a regular reader, I support Mr. Ajibulú's suggestion that the Alawada Group (Baba Sala) should stick to their old system of staging plays.

In the first place, the pidgin English being used by members of the cast is not being used effectively which makes the lesson usually drawn from their plays very difficult to understand.

I also strongly advise that the Alawada Group stick to their old system.

A. O. OLATUJA
AKURE, ONDO STATE.



A.O.O. Olatuja

Extra Time, Please

KINDLY allow me a space to air my view on a pressing issue "KATIGORI GBEKEYAN" a drama programme currently going on, on NTV Ikaja. Channel 7 is a very good slot which I think should be given extra time.

Thus, I would that the 25 minutes given to it should be increased to one hour like other drama series. Many of the foreign slots which are given much longer time should have their time reduced.

JAMES OLASUBOMI OLAIYA
LAGOS.

Moral Instructions Needed

I say 'bravo' to Radio/TV Times for enlightening readers through its various news analysis. They make interesting reading.

My suggestion however is that more and more fiction stories relating to morals should be given a space in the magazine, in order to raise the moral standards of the youths in the country.

NAJIMU ANIKULAPO
'AGEGE

More Effort Please

I AM a regular reader of your monthly magazine — Radio/TV Times. I enjoy reading it, because of its educative, informative and entertaining features. For this, I say bravo to all the editorial staff of the magazine. And at the same time, please continue to put in more effort in order to make the magazine one of the leading journals in the world.

I also implore the editor, to continue publishing the O—Y—O programme schedule and include in the next issue, the NTA Ibadan Channels, 3, 4, 5, 7 and 11 programmes.

PRINCE I. S. AKEEM—RASHEED
OYO STATE.

Publish More Feature Articles

I AM a regular reader of your monthly Radio/TV Times. Grateful if you will continue to publish more articles. Apart from being educative and interesting, it brings the readers in touch with current happenings in our country.

We need more of these interesting and educative articles please.

AKIN ADEYANJU
OJOTA.

Pen Pals Wanted

I want Pen Pals from all over the World. My hobbies are Exchange of Pictures, Bible Study, Music and Travelling.

Interested pals, please contact Alphaeus O. Ugbome of 87 Oshodi Road, Lagos State, Nigeria.



Alphaeus O. Ugbome, Lagos

I AM 32 years old. I want Pen Pal of both sexes from Africa, Jamaica, U.S.A. London, Brazil, China and Scotland.

Special interests are: Arts, Music, Travelling, Newspaper Reading, Letter Writing, Dancing and Footballing.

Any interested pal should please contact me. on P.M.B. 686, AKURE.

IDRIS ADE Y. OLADELE
AKURE

DO you enjoy swimming? You are the right Pal I want for keep. I am a very good swimmer and I like reading adventurous novels at my spare time.

Please contact me today, through this medium — Radio/TV Times, if you are interested. I am 22 years old.

BENJAMIN DICKSON
LAGOS.

Rotate The Stations

I WOULD like to suggest that since those small Radio Stations couldn't feature monthly in Radio/TV Times because of space or otherwise, effort should be geared towards publishing them in a rotational form in at least two or three months interval, after last publication. This would keep numerous users abreast of these changes rather than abandoning the programme schedules for a long period of time.

It's hoped this suggestion would be considered.

M. OTU
BARIGA, LAGOS

Your suggestion is noted.

CONTENTS

Letters	2
Ports Development	5
The Car Loan Affairs	6
Creating Local Government.	7
Petro-Chemical Industry	8
October Lectures	8
Luckiest Man Alive	12
Television Programme Schedules ..	14
Radio Nigeria Programme Schedules	17
States Programme Schedules	39
Radio Nigeria Meter Bands	48

Cover More Areas

AS one of your regular readers I suggest a review of the Top-Ten Results.

SOME prominent record dealers have complained that the sampling of the best selling records does not get to such areas like — Ijeshatedo, Ajegunle, Amukoko and Maroko.

WILL the producer in cooperation with the Research and Marketing Services (RMS) which carries out the survey, make sure that they include these areas in order to produce a balance chart?

KINGSLEY K.

LAGOS

COVER



Listeners to series of programmes from various radio stations realise the important role which Libraries play in the supply of information and entertaining materials for public consumption. Miss Acs Abu, our Cover Girl this month, wades through the Library shelves to dig out the much needed materials for broadcasters. Of-course, she is an Assistant Librarian, Radio Kano.



NIGERIAN RADIO-TV TIMES
Programme Journal of the Federal
Radio Corporation of Nigeria.

Volume 14 No. 4

April, 1982

PUBLISHERS
Federal Radio Corporation of Nigeria
Broadcasting House, Ikoyi, Lagos.

EDITOR
Tijani Lawal

SENIOR SUB-EDITOR
Bukola Olatado

GRAPHIC ARTIST
Ebong Ukut

ASST. GRAPHIC ARTIST
David Aruoyingho

COMMERCIAL MANAGER
Folorunso Popoola

STAFF PHOTOGRAPHER
Anunihu Ibeqbu

ASST. STAFF PHOTOGRAPHER
Oyetayo Idowu

All Correspondence to:
Publications Department,
45, Martins Street,
Lagos.

For any additional information,
please contact:

The Manager,
Home & International Relations,
FRCN,
Broadcasting House,
Ikoyi—Lagos.

Registered at the G.P.O. as a newspaper.
Published every month by the Federal Radio
Corporation of Nigeria. Publications Department,
Broadcasting House, Ikoyi, Lagos, and
printed by the Skyway Press Ltd, Kudeti Street,
P.O. Box 1204, Ikeja, Lagos.

LOFTY SERVICE INDEED

—Minister Commends Role Of Radio Nigeria

ON Monday, March 1, 1982, the newly appointed Minister of Information Mallam Garba Wushishi paid his first official visit to the Federal Radio Corporation of Nigeria, Ikoyi, Lagos. He was met on arrival at the Broadcasting House, Ikoyi by the Director-General, FRCN, Mr George Bako and his top management staff. After going round the various operational areas of the corporation, the Honourable Minister delivered his address.

Below is the full text of his address for the benefit of our readers.

Hon. Adviser and Chairman of the Interim Board,
The Director General,
Distinguished Guests,
Ladies and Gentlemen,

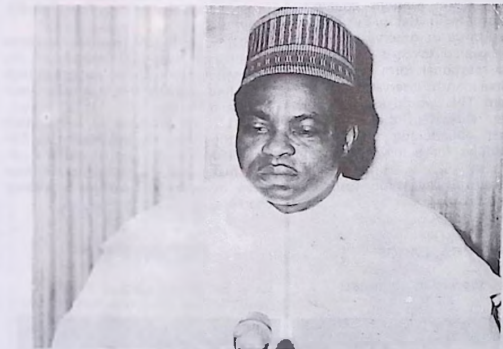
I must begin by expressing my very sincere appreciation for the very warm reception you have accorded me and my entourage.

Since my appointment as your Minister of Information, I felt it essential to conduct a tour of all the establishments and parastatals in the Department of Information, to meet you, share with you, get to know you the people who actually make the media tick, familiarize myself with the various processes and facilities essential to your work and mine, and generally establish a foundation of good will and mutual understanding on which the success of our joint endeavours ultimately depends.

I have so far visited the Department of Information and the Nigerian Television Authority. Today is specially reserved for the Federal Radio Corporation of Nigeria.

Of all the media of information, Radio occupies a very unique position. It has the widest and most comprehensive impact on the totality of our people. In every village, every hamlet, every city, every community, there is at least one radio set.

In the rural areas, farmers now carry their radios to the farms. In the



Mallam Garba Wushishi, Federal Minister of Information.

cities, petty traders and guards are never without their radio sets.

They listen to news and entertainment in their various languages as well as in English, and participate in the various educational, informative, cultural and entertainment programmes for which public broadcasting has come to occupy a very unique position in the social, political and economic life of this country.

In many areas of this vast country the masses have come to regard Radio as the repository of authoritative information and truthful reporting of news. They believe what they hear on the radio because they heard it on radio.

This is both a mark of the high in which radio is held in this country, as well as an indication of the solid achievement of F.R.C.N. staff over the years, in building for this institution, a nation-wide reputation for honesty, Integrity, objectivity, and reliability.

This kind of reputation also imposes on the F.R.C.N. an additional responsibility. We cannot afford to

abuse the people's trust. We must continue to work hard to ensure that the nation's confidence in our continued service as an objective and honest information service is never misplaced.

I am frankly impressed by your lofty achievements in national service, and even in international competitions, in spite of the constraints under which you have performed your services to the nation.

I was earlier briefed by the Department of Information that out of a total provision of ₦43.4 million approved for your recurrent and capital expenditure last year only a portion was actually released to you owing to the austerity measures imposed by Government under the financial circumstances prevailing in the country on account of the all glut and its attendant repercussions for Government spending.

This must have affected your ability to carry out your various plans for the delivery of improved radio ser-

Turn to Page 13

PORTS DEVELOPMENT

—Bid To Eliminate Congestion

By Deninhun Alaja-Browne.

THE construction of new ports is part of continuing efforts to alleviate the major economic constraint of port congestion the country has been facing for some time. It is also a clear indication of the Federal Government's determination to ensure even spread of amenities which are essential to economic development of all areas.

Nigeria has had to cope with problems of increased pressure on her ports since the years following the civil war. The existing ports at the time in Lagos, Port Harcourt, Calabar, Warri, Burutu and Koko could not effectively handle her cargo capacity with the result that her import costs were very high. Short term measures such as installation of moving buoys and jetties at the ports, were taken at that time.

Construction of new ports was planned as a more permanent solution to the problem. For example, the Tin Can Island Port which became operational in 1977 was constructed at a cost of 200 million Naira to alleviate the congestion at the Apapa terminal. The Onne Port was similarly built in the Rivers State at a cost of 110 million Naira to lighten the traffic at Port Harcourt.

Since the new ones were built, the congestion at our ports has been dramatically relieved. At the peak of the congestion in 1976 - 1977, the cargo handling of our ports stood at 4.1 million tonnes as against a total of 12.7 million tonnes of cargo handled in that period.

By 1978-1979, the port capacity had risen to 17.3 million, as against the 17.6 million total cargo throughput that year. This, in real terms, means that in 1976-77, cargo was about three times the available port capacity whereas in 1978/79, cargo matched existing port facilities. With time however, a considerable lull in import traffic was noted, following the introduction of some fiscal measures by the Government.

The Third National Development

Plan proposes a programme of port expansion at a cost of 322 million Naira in the country. The programme which has been set in motion, includes construction of additional berths, wharfs and purchasing of mechanical handling equipment at all existing terminals.

The Fourth Development Plan, arranges for the building of new terminals in Onitsha, Anambra State, Oguta in Imo State and Lokoja in Kwara State. Construction of additional ones will completely solve the problem of congestion. Certain unscrupulous business men who have been taking advantage of the congestion by hoarding scarce commodities at the ports and causing inflation will no longer be able to do so.

With the provision of several standard sea terminals in the country, it is important that shippers be induced not to concentrate on the ports of Lagos for cargo destined for other

parts of the country as the practice has been for a long time. Campaigns should be organised to inform shippers of the need to make use of other ports. Such campaigns were held by our Chambers of Commerce and Industries and similar institutions abroad when the ports of Calabar and Warri just became operational.

It is equally important that these ports be well equipped so that they can effectively cope with envisaged increase in activities resulting from Government investment in the area, such as Warri refinery and the direct reduction steel mill at Aladja. Feeder roads must be provided to make transportation of cargo from the port to land easy.

The full development of existing ports and construction of new ones will give the nation effective ports service and congestion with its attendant handicaps will be completely eliminated.



Tin-Can Island — a boon to Nigerian Economy

THE CAR LOAN AFFAIRS

—What Are The Issues At Stake?

By



Andy Anarado.

ACCORDING to statistics supplied by the Head of the Federal Civil Service, a total of 1,888 officers had applied for car loans to the value of over N11 million, since the scheme was introduced some months ago. Not less than 1,390 of the applicants have got approval for the loans, involving nearly N8 million Naira. These were entirely civil servants.

As was explained, the Parastatals, although part of the N25 million, granted by the Federal Government for the car loans, were still to get a kobo out of the amount. The defence put forward was that the applications from the Parastatals might not have been dealt with, because the Ministry of Finance was examining technical problem connected with the issue of recovery of loans from the staff of the Parastatals.

From the statistics of the loan disbursement, it is clear that to those government organisations that go by the tag of Parastatals, the exercise does not look impressive. To them nothing could be more discriminatory.

What is painfully repulsive, is the criteria adopted in determining sectors of priority for the granting of the loans. The conclusions that have emerged from the exercise so far could be that the place of priority has been given to civil servants, contrary to Executive directives.

This puts the entire exercise into question. The truth is that the whole

thing looks very clumsy and subjective. What was the wisdom in channeling applications already approved by Chief Executives of the various Parastatals through the Ministry of Finance for another round of consideration and scrutiny. Could it be, that the Chief Executives of the Parastatals were not considered competent and efficient enough to determine who among their personnel needed and qualified for a car loan advance?

Was it really necessary to put the applicants from the Parastatals at the mercy of their civil servants counterparts? The fact is that the Parastatals seem to have been treated, in the car loan issue, as an insignificant sec-

tor of the Federal Government's Machinery.

One vital point, that needs to be strongly emphasised is the high public expectations in the Presidential system which we now operate. Experience has shown that whenever there is an undue delay or neglect in the implementation of project or a scheme it is the image of the country's Chief Executive that is put to test, not that of those executing the programme.

This means in effect that for that image to be sustained, there should be an effective monitoring machinery at all levels to ensure prompt compliance with Executive directives. Those who could not perform, under the system, which demands high level of reliance and positive results, should of course take the exit.

It is difficult to defend a situation, where it has taken some officials over seven months to ensure general compliance with Executive instructions as far as the Parastatals are concerned over the car loan issue. The shabby manner the car loan issue has been handled, appears to be a clear evidence of the exploitation of the 'Charity begins at Home', syndrome.

The Parastatals seem to have been victims of an inherited colonial system, which has put the dictates of their affairs on largely non-professionals in the civil service. Perhaps, this justifies the decision of the President to set up the Onosode Commission, which it is hoped will give the Parastatals the level of autonomy that had been denied them for so long. The handling of the car loan issue has further enhanced the argument for such an autonomy.

The Vice President also spoke the minds of the entire nation, when he warned that all officers responsible for the car loan grants would be dealt with in the event of any industrial action over the issue. The statement could not have come at a better time. What should be done now is to provide adequate funds to the Parastatals to grant direct car loans to their staff without unnecessary Civil Service interference.



Workers queuing up to enter public transport

Creating Local Government

—Controversial Issue In Most States

THE creation of new local government has been one of the most contentious issues since the return to civil rule in the country.

Initially the controversy over the issue concerned the constitutional right of State Governments to create new local governments in their areas of jurisdiction. It was argued that since the constitution listed the various local government areas to be found in each state, the creation of new local government was somehow suspected to be a constitutional matter.

In spite of that, many state governments have been creating new local governments. This is on the understanding that uniform guidelines would be issued to regulate the exercise throughout the Federation. So far, the guidelines have not been issued.

Nevertheless, the creation of new local governments has remained a dominant and controversial political issue in most states. In Ondo state for instance, the Governor recently made known his intention to create an additional 69 local governments which would bring the total of such councils in the state to 76. This is against the wish of the state legislature which wants a total of local governments for

By



Robert Bikefe

the state.

In Gongola State, there was a war of words late last year between the executive and the legislature over the State local government bill. As a result the Governor refused to assent to the bill after it had been passed by the assembly.

But at the expiration of the mandatory period allowed by the constitution to enable a governor respond to any bill, the legislators exploited the two-thirds clause to ensure the final passage of the bill into law.

Ondo and Gongola are not the only State that have been affected by the drive to create new local governments. In fact, the number of local governments had been more than doubled in most states since the inception of the present political order in the country. For instance, Bauchi State has increased its own number from 16 to 43 and Cross River from 12 to 47. The River State which used to have 10 local governments now has 50.

The reason being advanced by State Governments for the proliferation of local governments is the need for even development among all communities in the various States. It is believed that the creation of more local councils would considerably lead

to desirable decentralisation thereby enabling the people at the grass roots to adequately feel the impact of government activities.

However, some observers have also been arguing that an important reason for the multiplicity of local councils borders on the fact that under the recently accepted revenue allocation formula appropriation of ten percent of the national revenue would be made to the local governments. It is alleged sometimes that the creation of more local governments is aimed at attracting more revenue from the Federation account to the States concerned.

This contention has its own flaws which if not taken into due consideration would ultimately defeat the very purpose for which the local governments are being created.

The argument about even development is ordinarily a highly persuasive one. It underscores one of the most important functions for which governments should plan for purposeful development in their areas of jurisdiction.

But while readily conceding this overriding fact, it should also be noted that projects for even development must be funded and they require a productive base to ensure a reasonable measure of success. So far, new local governments are only adding up to the administrative running cost of the various state governments since the local governments do not have the means to be financially self sustaining.

To inadvertently add up to the financial burdens of state Governments at a time of budget austerities and economic squeeze would further complicate the problems associated with proper fiscal planning.

In the final analysis, many states will find out from experience that a balance have to be struck between desires for more local governments and the need to ensure their viability.



Map of Nigeria showing 19 States

Map of Nigeria showing 19 States.

Petro-Chemical Industry

—Main Backbone To Agricultural Revolution

THE recent world-wide oil glut has exposed the weakness inherent in the economies of the oil producing nations. It has affected seriously those countries which solely rely on crude oil sales as their major foreign exchange earner. This down-turn in the economy has forced some countries to introduce authority measures to curtail spending.

While many members of the Organisation of Petroleum Exporting Countries OPEC had to reduce the price of their crude on the world market, some were forced to reduce production.

The lesson that comes out clearly is that the oil producers can no longer control the fluctuation in the price of crude oil in a world that is now very conscious of energy conservation. The effect of this on the economy of a country like Nigeria could be far-reaching.

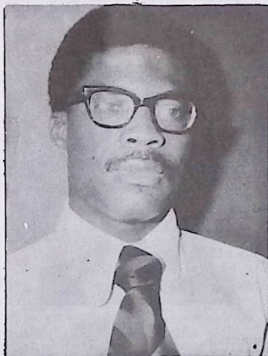
This is why the announcement by the Minister of Industries, that the Federal Government was embarking on a multi-billion Naira three-phase project for the manufacture of basic and intermediate petro-chemical substances is a most welcomed development.

In the first phase, two plants will



Mr. Horatio Agedah, Chairman NNPC.

By



Clement Akintomide.

be established to produce 35,000 metric tonnes of POLYPROPYLENE and 25,000 metric tonnes of carbon black yearly. The plants which will use products from the Warri and Kaduna refineries, are expected to be completed in 1983.

The second phase which will be the largest, will have plants that will produce 300,000 metric tonnes of Ethylene stream cracker and 110,000 metric tonnes low density polyethylene. Though the capital outlay on these projects are enormous, the fact remains that they will provide very sound bases for the future development of the country's petro-chemical industries.

In our efforts to decentralise the economic base, emphasis had always been laid on agriculture, and the Iron and Steel sectors. But it must be noted that it is virtually impossible to develop modern agriculture or any major industrial sector without the extensive use of petro-chemical products.

The importance of Petro-chemicals in our day-to-day lives cannot be over-emphasised. From the plastic buckets we use to the plastic plates and cups

on the dining table and the chairs, pillows and mattresses in our homes are all petro-chemical based products.

In the agricultural sector, petro-chemical products and chemicals are used so extensively that they could be regarded as the main backbone of any agricultural revolution. Apart from fertilisers, all sorts of chemicals used in pest control such as insecticides, fungicides and herbicides, are all derivatives of petro-chemical products. These products are also extensively used in the building industry in areas such as floor and ceiling tiles, electrical insulation, pipes, conduits and paints.

From the fore-going, it could be seen that the benefits that will accrue from developing our petro-chemical industry are more than what meet the eyes. Apart from cutting down the country's import bill, it will also improve the living standards of the ordinary Nigerian as these products will become abundant and should be cheaper. Moreover it will not only provide the broad-based industrial infrastructure required for the production of essential goods, but also serve to hasten Nigeria's entry into the industrial age.



The two farmers spraying the cocoa trees through the use of insecticides

TRADITIONAL MEDICINE

—Areas Of Specialisation Classified

THE LECTURE reproduced below is the last of the Six lectures presented by Dr. Joseph O. Mume, the Traditional medicalist and a Naturopathic Physician.

His first lecture was published in the November 1981, issue of Radio/TV Times. Dr Mume based his six lectures on Traditional Medicine in Nigeria. The lecture which was launched on Friday, September 25 1981 at the National Theatre, Iganmu, pulled a crowd consisting of herbalists, faith healers and natural healers.



Dr. J. O. Mume

THE Practice of traditional medicine, in Nigeria, can be classified into different areas of specialization.

Among Nigeria's traditional medicine doctors, there are general practitioners, herbalists, native doctors, bone setters, masseurs, gynaecologists and midwives, the blood letter, the traditional surgeon and the psychiatrist.

Traditional medicine offers different treatments for different ailments and diseases. Constipation, cold, catarrh, abscesses, boils, sores, ulcers, diarrhoea and dysentery to name just a few, have different traditional methods of treatment.

It is of great interest to me and I think it will be to you too, to know how accident victims are treated and cared for by the use of traditional methods. In the days of our forefathers, accidents were not as rampant as they are today. But then, there used to be some rare accidents involving farmers and palm-tree climbers.

In those days, if someone fall from a palm-tree, the first thing to be done was the application of cassava or ash-veve leaves to the wounds to stop any bleeding. A general practitioner of traditional medicine who specializes in this field is then consulted. The treatment he offers includes thorough massaging and setting of the displaced bones, herbal application and heat therapy.

After massaging and setting of the

bones, the patient, who has fallen from the palm-tree is given a herbal sedative to make him sleep soundly. During sleep, his body is rubbed with herbal medicines soaked in palm-oil to serve as lubricant which softens and relaxes constricted muscles. Wounds are treated separately and bones are mended together also by herbal medicine.

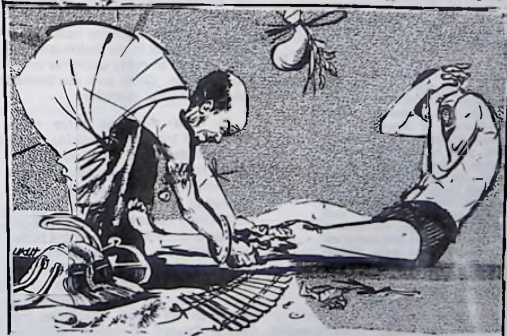
After this course of treatment, the patient is placed on a high platform where he lies and beneath the platform

is a fire made to produce constant heat. The purpose of this kind of treatment is to relax all congestions, inflammations and fever which follow all cases of serious accidents.

The patient receives this heat treatment for about seven days after which he is discharged. His people are then given instructions by the traditional medicine practitioner on how prescribed herbal preparations should be used. The patients' recovery is watched by everybody until he is fit again to go back to his normal occupation.

Psychiatry is another interesting aspect of traditional medicine. In Nigeria, the traditional psychiatric treatment of mental patients consists of torturing in order to drive out the evil spirits to whom the mental problem may be attributable. Various forms of torture were known but the most common form is beating with medicinal broom or stick. This method may be regarded in some quarters as brutal. But the method is based on the theory that when violence is applied to violence the result is peace and harmony.

This means that when a violent mental patient is treated with some



A mediciner setting broken bones — The traditional way of treating accident patients through the use of leaves or massaging.

OCTOBER LECTURES

form of violence, his healing force is stimulated to produce a curative reaction which makes him calm and less violent. This stage is most suitable for the psychiatrist to investigate the cause of his patient's abnormal behaviour. He asks questions to determine whether his patient is guilty of some evil deeds.

If this is confirmed, the only cure is to persuade the patient to confess his sins and be forgiven through prayers and sacrifices offered by the elders.

Two other causes of mental disorders are known to the traditional psychiatrist. These are chemical imbalance and the displacement of the vertebrae of the spine. There is chemical imbalance if the brain is deprived of essential chemical elements — as result of eating non-balanced diet. The only way to cure mental disorder due to chemical imbalance is to correct the eating habits and fortify the body with the needed elements by means of herbal remedies.

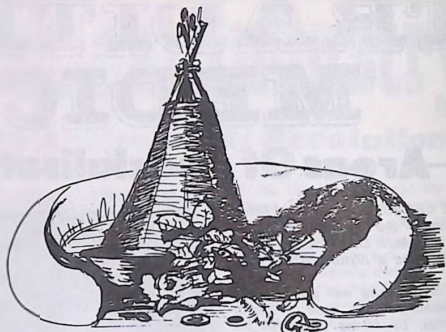
The displacement of the vertebrae of the spine as I have said, can cause mental disorder because it puts pressure on the nerves passing through the spinal cord. The treatment generally adopted by traditional practitioners in this case is the methodical manipulation and gentle pressure on the spine or concussion, that is, a blow with the hand on the affected section to bring about healing of the disorder of that part of the body.

Before the advent of European civilization and medical science in Africa, the health of the citizens was in the hands of Babalawos, Obos, Likitas and Dibias, otherwise known as native doctors or herbalists.

The late Professor El Said of Ife University said when writing on traditional medicine and I quote:

"traditional means of treatment are well established in Nigeria. Herbalists and country doctors flourish all over. There is a move in all states of Nigeria by the various Ministries of Health to build more hospitals and health centres. More money is being voted for health projects and Nigerian Universities are fast turning out more doctors. Nigeria boasts of several general and mission hospitals, yet the number of native doctors and herbalists has continued to grow. Rather than get displaced by the growing medical services, their services are in greater demand than ever before. Why?" End of quote:

It is on the answer to that question as well as on the merits of traditional medicine that the case for its official



A shrine — A typical place where traditional medicinemen prepare their herbs.

recognition should be based.

Judging from our present rate of success in the treatment of disease, one can now hope that the future prospect for traditional medicine in Nigeria is bright. It is my belief that traditional medicine now has a respectable image both in this country and abroad. There are also many other traditional medical doctors, all over the country, who are fighting for the emancipation of traditional medicine in Nigeria. Our problem is that we have not been able to come together to forge a united front in our struggle for recognition.

Our governments, too, are not sufficiently enthusiastic about helping the course of traditional medicine in Nigeria. Traditional medicine occupies an important place in the health-care-delivery services of many countries in the world. India, China and the Netherlands are obvious examples.

In India there are three major systems of traditional medicine, namely Ayurveda, Unani and Siddha. Ayurveda has been in continuous practice for more than 3,000 years. It is closely linked with the Hindu religion, while Unani has some muslim religious background. At least 80% of the population especially in the rural areas have unflinching faith in the three systems of traditional medicine in India.

In 1970, the Indian parliament passed an act which established the Central Council of Indian medicine, with responsibility for training and research in Indian Traditional medi-

cine. Now an aspiring Indian can obtain a Bachelors degree in traditional medicine and surgery. At least there are about 400,000 practitioners of traditional medicine in India with about 215 special hospitals and 14,000 dispensaries for traditional medicine.

Not less than 94 training establishments cater for the needs of prospective Indian traditional doctors. These include Universities, Colleges and other Institutions.

By government legislation, traditional medicine now enjoys a very respectable status in India and exists side by side with orthodox medicine. Both are practiced in hospitals and clinics. Students who qualify from Universities or similar institutions can set up private practice or be employed by states or the federal government of India to practice traditional medicine.

In China the position is even more satisfying. The Chinese have conducted research into all facets of Chinese traditional medicine and established extensive plantations for the cultivation of medicinal plants. Hospitals are established everywhere and in these, both traditional and orthodox medicine are prescribed and dispensed.

There are traditional medicines in use for the removal of kidney stones without resort to surgery. Acupuncture, a Chinese indigenous method of treating various stubborn diseases like myopia, Hemiplegia and rheumatoid arthritis is now enjoying international recognition.

Both traditional and orthodox doctors work hand in hand to enhance

OCTOBER LECTURES

the health of citizens without one group grudging the other. In China, modern scientific methods have been used to improve various aspects of traditional medicine. Herbalists use stethoscopes and other modern diagnostic aids freely and expertly. But here in Nigeria the situation is different.

Sometime in 1975, and at the instance of the federal government of Nigeria, a committee known as the 'Committee for Traditional Medicine' was formed and charged with the duty of finding ways and means of improving traditional medicine in Nigeria. But unfortunately, the majority of the members of this committee were medical doctors. I also happened to be a member of the committee.

In September 1977, this Committee sent a delegation, at public expense, to countries like India and China to study how those countries are operating their traditional medical services with a view to finding ways of improving



—Dr J. O. Muna (3rd from left) poses with some Nigerian herbalists at the end of the launching of his October Lectures

our traditional medicine in Nigeria. The delegation returned home with a favourable report and recommendations. Now four years have passed and the recommendations are yet to be implemented.

Nonetheless, traditional medicine is gaining converts daily and I hope very soon it will occupy a prominent position in this country's health care delivery service and I am sure that Nigeria will be the better for it.

AUDIENCE RESEARCH

THERE is no doubt you are one of millions of Listeners to Federal Radio Corporation of Nigeria Programmes. Would you then like to join a specially selected group of listeners chosen from all parts of the country? The actual work involved is very little and we do not ask for extra listening from you. All you will do for us is to fill in questionnaires relating to some of our programmes you usually listen to. You see, everybody concerned with planning Federal Radio Corporation of Nigeria Programmes regards the information supplied by members of our Listener Panel of great importance. In fact this information plays a great part in helping the planners decide on what programmes to broadcast.

If you would like to be considered for membership of FRCN Listener Panel please write now to:

CONTROLLER, AUDIENCE RESEARCH
FEDERAL RADIO CORPORATION OF NIGERIA
45 MARTINS STREET
LAGOS.

NEWS & CURRENT AFFAIRS
TALKS AND FEATURES
SPORT
LIGHT & POPULAR MUSIC
WOMEN & CHILDREN'S PROGRAMMES
RELIGIOUS PROGRAMMES
CLASSICAL MUSIC
CULTURAL PROGRAMMES

We refund postal expenses incurred by panel members in returning questionnaires.

We would like you to join the Panel, but if for any reason you are not able to do so, please continue to write to us. We welcome your comments on our programmes whether critical or favourable. We particularly like any suggestions you may have for future programmes.

If you do decide to apply for membership we will be pleased if you could answer this short questionnaire, cut it out and send it along with your application.

How interested are you in the following types of programmes?

Not at all interested	Fairly interested	Very interested

LUCKIEST MAN ALIVE

By O. Kuféji

THE results of Radio Nigeria 1981 Christmas Short Story competition were recently announced over the radio. In this issue, the Radio/TV Times publishes the first part of the first prize — winning story written by Olu Kuféji from Lagos State. Entitled "The Luckiest Man Alive", the story is quite scintillating and makes interesting reading. The second and the last part will be published in the next issue.

JATO had done it. Just like that, he hit the jackpot. The news was too good to be true, but there it was. The cheap radio box in the office of the Works Manager said it. The talking box in the Works Canteen and the Common Room carried the news as well.

That was 9 a.m. Newsflash. It was a sort of news flash and pools advertisement, rolled into one — "Invest on Christmas Pools and Lottery. Be a lucky man this season". The announcer raised his voice an octave higher. "Jato has just bagged fl-e-e-e-vty thousand Naira on Christmas Pools and Lottery".

The Works Manager jumped from his desk, raced to the Machine Room and patted Jato's back excitedly. "Congrats, mighty congrats!" he heard himself shouting and yelling. Like a bush fire, the news quickly spread round the works. Dodowa Printing Works had never known such pandemonium. Hell literally broke loose.

Fellow printers rushed on Jato and carried him shoulder high. And the apprentice printers you can't beat them. They left their printing machines, picked up waste paper boxes and started drumming with anything they could lay hands on — Spanners, screw drivers, wooden mallets, just anything handy would do for the drumming.

The Press Managers too, vied with each other to touch the lucky winner — you can never tell how luck travels. Minutes later, Jato the lucky winner was gently lowered on the workshop floor, in a big way, befitting a man of

substance. He is in money—Naira power spelt out. His colleagues were actually jumping for joy.

They stripped off his navy blue overall — boiler suit sort of. And that was lucky Jato hanging up his printer's overall for life — the way retired boxing champions hang up their gloves. Six at a time brought along his clothes and robbed him. For other fellow printers came forward with his shoes, itching to do him honour.

The apprentice printers and press attendants stood back watching. They formed a close-knit circle round the jubilant crowd. With clenched fists and power salute they yelled, Money! Money!! Naira Power. It's everything, they said to each other. How true money — real hard cash could turn tables and make scores of heads swell and spin — the onlookers were thinking aloud.

As for Jato, tears of joy welled up in his eyes. He tried to fight back the meaningful tears. No never, a big man

must not shed tears openly. The next minute, he held up his head, and shot out his big chest. No one can blame Jato — that was his finest hour; the very peak of pleasure. There he stood among his colleagues with his head right up in the air, and his chest heaving up and down, a perfect rhythm; the way big men do — no doubt.

Once again, Jato was carried right round the works. "That's money — Naira Power" he shook his head with pride — and a lucky head that was. He was borne shoulder-high like that to the main gate. A delivery van was off-loaded with haste. Jato must have priority. The Works Manager looked on wondering. He almost regretted breaking the news to Jato at the peak period.

What with the loss to the Works in man — hours. He did not fancy the crazy demonstration, but what could he do? Sack the demonstrators or Jato who is at the centre of the storm. Poor



Mr. Olu Kuféji

SHORT STORY

printers seldom jam luck or hit the jackpot, except in print. The over-excited printers like men of steel and cast iron might get off their heads and tell him off.

By 10 a.m. Jato had steeled down in his home among his four wives. Then the news flash again. "Here is a piece of announcement", blared the rediffusion box hanging in his bed-sitting room - "Invest on Christmas Pools and Lottery. Jato just made it. He bagged N50,000". The announcer added his bit. "What a man, what a luck."

The news was said again in all vernaculars. Something near riot set in among Jato's four wives. Bitten by the bug, they too jumped for joy hugging their husband and dancing round him. You need to see them eulogising Naira power. You can trust women for that. They went all out. It was as if hell was let loose.

Within seconds, praying neigh

bours rushed in. Within a jiffy, Jato's bed-sitting room was packed full. His four wives had to give way to accommodate the many well-wishers and strange faces who kept pouring in. Well! Well!! Jato had hit the jackpot - that was the hot news.

Once again, tears of joy welled up in Jato's eyes. But for that moment, he might never know that he had such a massive goodwill among friends and little-known neighbours. Strange enough, there was a side noise which came from the backyard. "Who again?" Jato wondered. The noise grew louder and louder still.

Jato raced to the backyard and there found three of his wives struggling maniously over something, somebody was beaten up. "W-H-A-T?" he nearly jumped out of his skin. His fourth wife it was; the most junior, the most charming. "Kail" that was too

much for Jato.

He struggled hard with the other three women to free the poor lady, but they insisted that she must pack and go "WHY! Why this rubbish" excited Jato asked. "She must go; she does not love you anymore, let her go" the three shouted back in unison. Jato wondered! they must be mad; utterly selfish; that money caused it.

"Come and see" the contestants led Jato to their joint bedroom. You don't come here often. We know. This silly woman is no longer one of us - she's secretly packing her things; ready to go. It's the big money, bringing her back. 'GO' she must' the three shouted together. For a long minute, Jato gaze into space gathering his thoughts.

"Women! women he took a deep breath and let off. "All of you must go-four wives, four troubles", he said half-aloud.

LOFTY SERVICE

Contd. from Page 4

vices to the nation last year. In spite of this constraint, I am satisfied that you did do your best to prevent any deterioration in the quality of programmes of the nation's premier broadcasting service.

With the 1982 appropriation bill now before the National Assembly, I fervently hope that the needs of the F.R.C.N. will receive from the lawmakers the very favourable consideration it deserves.

These constraints notwithstanding, we must continue to strive to make our radio broadcasting services the absolutely first class service it has always been. In a democracy like ours, where the majority of our citizens are still not literate, radio is able to communicate with everyone in his own language.

Its role in national development is therefore very unique. Though your honest and dedicated efforts, yours is a service that truly strengthens the foundations of our unity as a nation with a common destiny. Your responsibility is therefore grave. For on your

achievements depend the strength of the bonds that bind us as a people.

Radio is a powerful instrument for national unity. It has also been used in certain critical years in the past as an instrument for disunity and disaster. It is so powerful and sensitive a medium that it has to be handled with great care and true dedication to the national cause.

Today, with the proliferation of State radio stations, often hastily installed by partisan politicians as propaganda, the F.R.C.N. must continue to stand out as a national service, dedicated to objectivity, honesty, truth and national unity.

It must continue to be a national standard against which the shortcomings of the others must surely expose themselves. In this task, I am at your service as a fellow worker in this essential task. Let us join hands therefore and work together in the true spirit of mutual co-operation to deliver a truly first class radio service to the nation.

As your Minister, I will always work closely with you, to find solutions to our common problems, within the limits of resources available to us. I assure you of my total commitment to your success. In turn I expect the same of you. We must work hard together, to ensure the continued credibility of Radio, and to utilize this credibility in promoting a united, peaceful, dynamic and stable Nigeria, marching forward to even greater heights of national achievement.

I am sure that members of staff of the F.R.C.N. are naturally concerned about the Onosode Commission report. Now that the White Paper on this report is out, I can assure you that my Ministry will implement its recommendations, as soon as we receive the necessary directives to do so.

I thank you once again for the warm reception accorded me and look forward to the success of our mutual endeavour as the custodians of the Nation's virile, credible, dynamic and indispensable radio services.

Thank you.

MALLAM GARBA WUSHISHI
HON. MINISTER OF
INFORMATION

SHIPPERS CONFERENCE

—Milestone Of Economic Growth

By: Aliu Idris.

THE recent Conference of Nigerian Shippers which took place recently should be a milestone event in the development of a vital sector of the Nigerian Economy.

The conference which was opened by the Minister for Transport at the National Theatre, Lagos, was organised by the Nigerian Shippers Council. The Council was established in 1978 to protect the interests of Nigerian Shippers of all categories on all matters affecting the shipment of imports to and exports from Nigeria.

The term, Shippers includes: businessmen and women, traders, merchants, importers, exporters, industrialists and others whose businesses involve the use of ocean shipping and air cargo to reach their target markets. These operators were represented by guest speakers from such agencies as the Nigerian Ports Authority, Customs and Excise, Nigerian Insurance Association, the Nigerian Maritime Association, the Nigerian Road Freight Transporters and the Nigeria Police.

The objective of the meeting, as stated in the theme of this year's conference is 'towards, greater understanding between suppliers and consumers of shipping and related services'. In other words, this is a coming together for the mutual investigation and exposition of problems connected with the shipping industry in this country, with a view of finding solutions that will be mutually beneficial to both the operators of Shipping Services and their consumers.

Representatives of the shippers delivered lectures explaining the roles of various establishments and agencies towards making shipping an easier venture. The Shippers themselves were provided the opportunity to pose questions and obtain answers from the

speakers on problems connected with shipping and ancillary operations such as inland transportation, customs, traffic constraints, international trade and air freight operations as well as clearing and forwarding services.

The National Shippers Conference is also particularly welcome at this time because the kind of understanding it seeks to establish and promote will be cardinal to the successful operation of the new National Shipping Policy, which came into effect on January, 1982. The Policy can only work effectively where the public, operators and users of shipping services are not only sufficiently enlightened, but are also in a position to increase efficiency and profitability in the shipping industry. For increased understanding and efficiency would mean more active participation, especially in the light of the tools and incentives now to be made available by the Federal Government as a result of the New Shipping Policy.

The present focus of attention on the subject is based on the fact that Shipping is one of the three most vital ingredients of invisible earnings of any nation's economy; the others being banking and insurance. While a lot of progress has been made over the past few years to indigenise the banking

and insurance sectors, very little has been done up till now to break or even reduce the near monopoly of our shipping sector by foreign shipping lines and shipping interests.

As the Minister explained while announcing the new shipping policy in late December last year, a grossly disproportionate share of profits and benefits accruing from the shipping trade within our shores has been going to foreign operators. For instance, with this country being responsible for some 68% of the total volume of Sea-borne trade of the West and Central Africa sub-region, our indigenous ships carry only 11% of the cargo, and earn only a paltry 9% of the estimated revenue thus generated.

In the 1978/79 fiscal year, the total freight bill covering export and import and trans-shipment services paid by Nigeria stood at 1.6 billion Naira. Out of this amount, Nigerian carriers earned only a meagre 216 million Naira. These are only some of many regrettable statistics available.

The new shipping policy is therefore aimed at correcting this imbalance. And most importantly, it is to ensure that maximum benefits accrue to the Nigerian indigenous shipping Community, and to the nation at large.



A National Cargo Ship at berth ready to off-load at the Apapa Wharf



NIGERIAN TELEVISION STATIONS PROGRAMME SCHEDULE

NTA CHANNEL 10 LAGOS

TIME SUNDAY

12.00	YOM-YEM
12.30	SUNDAY SPORTS (F)
1.30	CONSUMER REPORT
2.00	THE ASSIZES
3.00	NEW SOUNDS
3.30	COMEDY
4.00	SUNDAY SHOW
5.00	GROWING WITH CULTURE
5.30	FOR CHRISTIANS
6.00	KIDDIES' JUNCTION*
6.30	SHOW OF THE CENTURY
7.00	CHANNEL 10 NEWS
7.30	JEFFERSONS (F)
8.00	DALLAS (F)
9.00	NETWORK NEWS
9.30	SOCCER (F)
10.30	SUNDAY MOVIES (F)

TIME MONDAY

3.00	EDUCATIONAL TELEVISION
4.00	SESAME STREET (F)
5.00	SING ALONG
5.30	JUNIOR QUIZ
6.00	YOUTH SCENE
6.30	FRENCH FOR BEGINNERS
7.00	CHANNEL 10 NEWS
7.30	GOOD TIMES (F)
8.00	ENERGY
	TAKE A TRIP*
9.00	NETWORK NEWS
9.30	CILIA BLACK SHOW (F)
10.00	NETWORK NEWS
10.30	CONFERENCE.
11.00	NEWSCAP
11.15	JUSTICE (F)

TIME TUESDAY

3.00	EDUCATIONAL TELEVISION
4.00	FUNNY COMPANY (F)
4.30	MAGIC CIRCLE (F)
5.00	YOUNGER BRAINS
5.30	CHILDREN RENDEZVOUS
6.00	NATIONAL SCIENCE QUIZ
6.30	LEGAL ANGLE
7.00	CHANNEL 10 NEWS
7.30	FEMININE FANCIES
8.00	ON THE MOVE*
	POT POURRI AVENUE
9.00	NETWORK NEWS
9.30	DOCTOR IN THE HOUSE (F)

10.00	DOCUMENTARY*
10.30	BAND AND
11.00	NEWSCAP
11.15	FOUR WINDS (F)

TIME WEDNESDAY

3.00	EDUCATIONAL TELEVISION
4.00	SESAME STREET (F)
5.00	ANIMAL GAME
6.00	BUSY HANDS
6.30	WA-ZO-BIA
7.00	CHANNEL 10 NEWS
7.30	YOUR HEALTH
8.00	MIDWEEK SPORTS*
	ACADA CAMPUS*
9.00	NETWORK NEWS
9.30	PLAY OF THE WEEK
10.30	MUSICAL VETERANS
11.00	NEWSCAP*
11.15	PALMERS - TOWN (F)

THURSDAY

03.00	EDUCATIONAL TELEVISION
04.00	UNDERFIVES - FIVES
04.30	ROGER RANJET (F)
05.00	TEACHING SPORTS
05.30	CHILDREN'S VARIETY CAREERS
06.00	CHANNEL 10 NEWS
06.30	WA-ZO-BIA
07.00	NTV CHANNEL 10 NEWS
07.30	SAWFORD AND SON (F)
08.00	*NEWS-WEEK
09.00	HERE AND THERE
10.30	EDDY OKONTA
11.00	NEWSCAP
11.15	PALMERS TOWN

TIME FRIDAY

3.00	EDUCATIONAL TELEVISION
4.00	SESAME STREET (F)

5.00	CHILDREN LITERATURE
5.30	FOR MUSLIMS
6.00	FAMILY MENU*
6.30	WA-ZO-BIA
7.00	CHANNEL 10 NEWS
7.30	PERRY ERNEST
8.00	PERSONALITY PROFILE*
9.00	NIGERIAN DANCES*
9.30	NETWORK NEWS
10.00	MATTERS OF THE MOMENT
10.30	ARTISTES SHOW CASE*
11.00	VOICES
11.15	NEWSCAP
	NEW SCOTLAND YARD(F)

TIME SATURDAY

12.00	SUPERSONIC (F)
12.30	CHAMPIONSHIP (WRESTLING (F))
1.30	MY THREE SONS (F)
3.00	PUPPETS
3.30	THOSE WERE THE DAYS (F)
4.00	CITIZENSHIP
4.30	NEXT WEEK ON TV BOOK REVIEW
5.00	NETWORK SPORTS*
7.00	CHANNEL 10 NEWS
7.30	BONGOS IKWUE
8.00	CALL-A-BLUFF
	SURA DI TAILOR
9.00	NETWORK NEWS
9.30	THIS WEEK IN REVIEW
10.00	SATURDAY SHOW
11.00	SATURDAY MOVIES (F)



"Take A Trip", on Monday at 8.30pm

*For technical reasons all the TV Schedules for last quarters are carried forward in this issue. Appropriate amendments will be reflected in the next edition.



NIGERIAN TELEVISION STATIONS PROGRAMME SCHEDULE

NTA-2

CHANNEL 5

LAGOS

TIME SUNDAY

2.00	THE SURVIVAL
2.30	SUNDAY MATINEE
4.00	FAMILY
5.00	IT'S A SMALL WORLD
5.20	C. B. BEARS
6.00	KIDDIES' JUNCTION*
6.30	LUCKY FELLER
7.00	NTA CHANNEL 10 NEWS
7.15	INTERLUDE
7.30	SANFORD & SON
8.00	PALMERS TOWN
9.00	NETWORK NEWS
9.30	THE PROFESSIONALS
10.30	SUNDAY MOVIES
11.15	CLOSE DOWN

TIME MONDAY

5.00	CLUE GLUB
5.30	PUPPET

7.30	DR IN THE HOUSE
8.00	ENERGY*
8.30	TAKE A GRIP*
9.00	NETWORK NEWS
9.30	MUSIC FROM OTHER LANDS
10.00	NETWORK NEWS
	CONFERENCE*
11.00	NEWSCAP
11.15	IN MY FATHER'S HOUSE.

TIME TUESDAY

5.00	BUFORD FILES
5.30	CHILDREN'S VARIETY
6.00	NATIONAL SCIENCE QUIZ*
6.30	JANA OF THE JUNGLE
7.00	NTA CHANNEL 10 NEWS
7.15	INTERLUDE
7.30	CILLA BLACK SHOW
8.00	ON THE MOVE*
8.30	THE WORLD WE LIVE IN
9.00	NETWORK NEWS
9.30	LIFE BEGINS AT 40.
10.00	DOCUMENTARY*
10.30	WATCH ALL NIGHT
11.00	NEWSCAP
11.15	RYAN
6.00	RÖGER RANJET
6.30	GODZILLA II
7.00	NTA CHANNEL 10 NEWS
7.15	INTERLUDE

TIME WEDNESDAY

5.00	SUPER GLOBE-TROTTERS
5.30	SESAME STREET
6.30	ONCE UPON A FABLE
7.00	NTA CHANNEL 10 NEWS
7.30	CHANNEL 10 NEWS
7.30	CHARLIES ANGELS
8.00	MID-WEEK SPORTS*
8.30	ACADA CAMPUS*
9.00	NETWORK NEWS
9.30	CAN WE GET ON NOW PLEASE
10.00	DAN AUGUST
11.00	NEWSCAP
11.15	VICTORIAN SCANDALS

TIME THURSDAY

5.00	NEW SCHMOO
5.30	CHILDREN'S RENDEZVOUS
6.00	PAPER LADS
6.30	MAGIC CIRCLE
7.00	NTA CHANNEL 10 NEWS
7.15	INTERLUDE
7.30	GOOD TIMES
8.00	NEWS-WEEK
9.00	NETWORK NEWS
9.30	MANY WIVES OF PATRICK
10.00	WRESTLING
11.00	NEWSCAP
11.15	HANGED MAN

TIME FRIDAY

5.00	FAMOUS FIVE
5.30	FUNNY COMPANY
6.00	FAMILY MENU*
6.30	HOW'S YOUR FATHER?
7.00	NTA CHANNEL 10 NEWS
7.15	INTERLUDE
7.30	UWAIFOR SHOW
8.00	PERSONALITY PROFILE*
9.00	NETWORK NEWS
9.30	SUPERSONIC
10.00	ARTISTES SHOWCASE*
10.30	TALES OF THE UNEXPECTED
11.00	NEWSCAP
11.15	JUSTICE.

TIME SATURDAY

2.00	THE ENTERTAINERS
2.30	SPEAR HEAD
3.00	CLASSICS
4.00	YOM-YEM
5.00	NETWORK NEWS*
7.00	NTA CHANNEL 10 NEWS
7.30	INTERLUDE
8.00	JEFERSONS
8.30	NEW SCOTLAND YARD
9.00	NETWORK NEWS
9.30	DALLAS
11.00	SATURDAY MOVIES



"Acada Campus" a network programme takes the air every Wednesday at 8.30



NIGERIAN TELEVISION STATIONS PROGRAMME SCHEDULE

NTA
CHANNEL 7
IKEJA

TIME SUNDAY

1.55	STATION OPENS
2.00	ERINKE
2.30	SODIAC PARTY/SEASAME
	STREST
3.30	WHAT & WHEHE
4.15	SHARE A TOUGHT
4.30	MUSIC OF THE WEEK
5.00	ORO PEMBO
5.30	OMO L'EHEIN KRISTI
6.00	KIDDIES JUNCTION
6.30	IFUN ORO
6.40	NEXT WK ON NTA IKEJA
7.00	ILERALORO
7.10	HEALTH IS WEALTH
7.30	IROHIN
7.40	THE NEWS
8.00	VIEW IT NOW
9.00	NETWORK NEWS
9.30	HOGBE (EGUN NEWS)
9.35	LET'S THINK
9.38	FROM THE LEGISLATURE
10.00	WOMAN'S OWN
10.30	KATIGORI GBEKEYAN
11.00	MOVIES
12.00	KAJORO
12.03	STATION PROMOTION AND CLOSE DOWN

TIME MONDAY

1.55	STATION OPENS
5.00	JUNIOR SHOW TIME
5.20	CLUE CLUB
6.00	YORUBA BY T.V.
6.30	PRESS REVIEW
6.40	KILE RO YI N SIWA
7.00	TURAKA
7.30	IROHIN
7.40	THE NEWS
8.00	ISENBAYE
8.30	TAKE A TRIP
9.00	NETWORK NEWS
9.30	HOGBE (EGUN NEWS)
9.35	KAJORO
9.38	WHAT THE PEOPLE SAY
10.00	NTA NEWS CONFERENCE
11.00	NEWSCAP
11.15	PROFESSIONAL
12.00	LET'S THINK
12.03	STATION PROMOTION AND CLOSE DOWN.

TIME TUESDAY

1.55	STATION OPENS
5.00	TAKE A DIP
5.30	SUPPER GLOBE TROTTER

6.00	NATIONAL SCIENCE QUIZ
6.30	PRESS REVIEW
6.40	IKILO IWA
7.30	IROHIN
7.40	THE NEWS
8.00	ON THE MOVE
8.30	FOCUS.
9.00	NETWORK NEWS
9.30	HOGBE (EGUN NEWS)
9.35	LET'S THINK
9.38	WON NI
10.00	DOCUMENTARY
10.30	FROM LAST QUARTER
11.00	NEWSCAP
11.15	MAIN CHANCE
12.00	KAJORO
12.03	STATION PROMOTION AND CLOSE DOWN.

TIME WEDNESDAY

1.55	STATION OPENS
5.00	MAGIC CIRCULE
5.30	SCHOOLS DEBATE
6.00	ECHOES OF LAGOS (REPEAT)
6.30	PRESS REVIEW
6.40	IDI ABAJO
7.00	ERINKE (REPEAT)
7.30	IROHIN
7.40	THE NEWS
8.00	MID WEEK SPORT
8.30	ACADA CAMPUS
9.00	NETWORK NEWS
9.30	HOGBE (EGUN NEWS)
9.35	KAJORO
9.38	SPORTS REPORT
10.00	VILLAGE HEADMASTER
11.00	NEWSCAP
11.15	MID WEEK SPECIAL
12.00	LET'S THINK
12.03	STATION PROMOTION AND CLOSE DOWN

TIME THURSDAY

5.30	PUPPET SHOW
6.00	ISEMBAYE (REPEAT)
6.20	PRESS REVIEW
6.40	VIEWERS MAIL BAG
7.00	ORI ITAGE
7.30	IROHIN
7.40	THE NEWS
8.00	NEWS WEEK
9.00	NETWORK NEWS
9.30	HOGBE (EGUN NEWS)
9.35	LET'S THINK
9.38	WHAT THE PEOPLE SAY
10.00	JOURNEY TO UNDERSTAND ING
11.00	NEWSCAP
11.15	SPEAR HEAD
12.00	KAJORO
12.03	STATION PROMOTION AND CLOSE DOWN

TIME FRIDAY

1.55	STATION OPENS
5.00	ERE'EWE

6.00	FAMILY MENU
6.30	PRESS REVIEW
6.40	SUCH IS LIFE
7.00	EGBE YEWO
7.30	IROHIN
7.40	THE NEWS
8.00	PERSONALITY PROFILE
8.30	NIGERIAN DANCES
9.00	NETWORK NEWS
9.30	HOGBE (EGUN NEWS)
9.35	KAJORO
9.38	WON NI
10.00	ARTISTS SHOW CASE
10.30	TURAKA
11.00	NEWSCAP
11.15	LOU - GRANT
12.00	LET'S THINK
12.03	STATION PROMOTION AND CLOSE DOWN.

TIME SATURDAY

1.55	STATION OPENS
5.00	SPORTS
7.00	STOCK MARKET REPORT
7.10	NEXT WEEK ON NTA IKEJA
7.30	IROHIN
7.40	THE NEWS
8.00	ECHOES OF LAGOS
8.30	FOCUS 2
9.00	NETWORK NEWS
9.30	HOGBE (EGUN NEWS)
9.35	LET'S THINK
9.38	AT YOUR LEISURE
10.00	COUNTDOWN
11.00	SATURDAY MOVIES
12.00	KAJORO
12.03	STATION PROMOTION AND CLOSE DOWN



*"At Your Leisure" comes up every
Sat. at 9.38pm*

RADIO NIGERIA: LAGOS

MF Short-Wave FM 1088 KHz - 276 metres
4.990MHz - 60 metre band
92.936MHz

0530 - 0005 hrs
0530 - 0005 hrs
0530 - 0005 hrs

SUNDAY

		(Rept. Tues. 14.03)	08.03	Popsville
	18.30	Voices	08.45	Educational Service
05.30	Drum Signal	(Rept. Fri. 08.30)	09.03	News on the Hour
05.33	Station announcement	With one Accord	09.03	Popular Sounds
05.33.30	National Anthem			(Rept. Thurs. 09.03)
05.34	National Pledge		10.00	The News
05.34.30	Frequency Announcement		10.10	Editorial Review
05.35	Programme Information			(Rept. 13.10)
05.40	Awake My Soul	(Rept. Mon. 13.45)	10.15	Educational Service
05.50	The Way of the Faithful	19.30	10.30	Educational Service
06.00	News at Dawn	(Rept. Tues. 16.30)	10.45	Educational Service
06.03	Moment for Thought	20.00	11.00	News on the Hour
	(Rept. 06.55&21.03)	20.05	11.03	Educational Service
06.06	Metodie with Vicki Madukife	20.20	11.18	Educational Service
	(Take a Hint is absorbed into this)	21.00	11.33	Educational Service
06.55	Moment for Thought	21.03	11.48	Educational Service
	(Rept. 21.03)		12.00	News on the Hour
07.00+	Network News		12.03	Educational Service
07.15	News Analysis	21.06	12.18	Educational Service
	(From: Sat. 22.15)		12.30	Mid-day Rhythms
07.20	The Week Ahead	21.21	13.00	The News
07.30	Music from the Origin		13.10	Editorial Review
08.00	News on the Hour	21.30		(From: 10.10)
08.03	Let's Worship	22.00+	13.15	Youth Rendezvous
09.00	News on the Hour	22.15		(From: Sat. 11.30)
09.03	From the Hospital Wards	22.20	13.45	In My Days
	(Request)	22.50		(From: Sun. 19.15)
09.50	The Week Ahead		14.00	News on the Hour
	(From: 07.20)	23.00	14.03	Kaleidoscope
10.00	The News	23.03	14.45	Let's find Out
10.10	Gandu Street			(Rept. Wed. 14.45)
	(Rept. Wed. 09.45)	23.50	15.00	News on the Hour
10.25	Programme Information	00.00	15.03	Kaleidoscope
10.30	The Law Maker	00.05	16.00+	Network News
	(Rept. Mon. 21.30)	00.05.30	16.15	Educational Service
11.00	News on the Hour		16.30	Schools Challenge/Schools Debate
11.03	Public Opinion			(From: Sun. 16.15)
	(From: Sat. 15.03)		17.00	News on the Hour
11.30	Join the Bandwagon		17.03	Forum/Please Explain
	(Rept. Sat. 22.20)			(From: Sun. 14.03)
12.00	News on the Hour	05.30	17.48	Announcers Choice
12.03	Family Favourites	05.33.30	18.00	News on the Hour
13.00	The news	05.34	18.03	For Your Delight
13.10	Lucky Dip	05.34.30		(Rept. 18.03)
13.15	Great Thinkers	05.35	18.45	Great
	(Rept. Mon. 18.45)	05.40		(From: 18.45)
13.30	Play of the Week	05.50	19.00	News Panorama
	(Rept. Tues. 21.30)	06.00	19.30	Make way for the Sirens
14.00	News on the Hour	06.03	20.00	News About Africa
14.03	Please Explain		20.05	Piano Play-Time
14.45	Breaking in	06.10		(Folk Tunes)
	(Rept. Wed. 17.30)			(Rept. Wed. 20.05)
15.00	News on the Hour	06.13	20.15	Educational Service
15.03	Music for Pleasure	06.30	20.30	Today at the National Assembly
15.30	Behind the Headlines	06.35		(Rept. 20.20)
16.00+	Network News	06.55	20.45	Educational Service
16.15	Schools Challenge/Schools Debate	07.00+	21.00	News on the Hour
16.45	Music from our States	07.15	21.03	Moment for Thought
	(Rept. Fri. 19.30)			(From: 06.55)
17.00	Across the Nation	07.20	21.06	Programme Information
17.45	The Music of...	08.00	21.08	For Muslims
18.00	News on the Hour			
18.03	The World of Sports			

MONDAY

RADIO NIGERIA: LAGOS

MF 1088 KHz - 276 metres
Short-Wave 4.990MHz - 80 metre band
FM 92.936MHz

0630 - 0005 hrs
0630 - 0006 hrs
0630 - 0005 hrs

21.18	Tomorrow on Radio Nigeria Lagos
21.30	The Law Makers <i>(From: Sund. 10.30)</i>
22.00+	Network News
22.15	News Analysis <i>(Rept. Tues. 07.15)</i>
22.20	Today at the National Assembly <i>(From: 20.30)</i>
22.35	Benediction
22.45	Educational Service
23.00	News on the Hour
23.03	Music to end the Day
00.00	News at Mid-night
00.05	Closing Announcements
00.05.30	National Pledge and Anthem.

TUESDAY

05.30	Drum Signal
05.33	Station Announcement
05.33.30	National Anthem
05.34	National Pledge
05.34.30	Frequency Announcement
05.35	Programme Information
05.40	Awake My Soul
05.50	The Way of the Faithful
06.00	News at Dawn
06.03	Editorial Review <i>(Rept. 10.10&13.10)</i>
06.10	Moment for Thought <i>(Rept. 06.55&21.03)</i>
06.13	Breakfast Beats
06.55	Moment for Thought <i>(Rept. 21.03)</i>
07.00+	Network News
07.15	News Analysis <i>(From: Mon. 22.15)</i>
07.20	Breakfast Beats
08.00	News on the Hour
08.03	Traditional Music
08.15	Cultural Feedback
08.30	Spiritual
08.45	Educational Service
09.00	News on the Hour
09.03	Mixed Grill
10.00	The News
10.10	Editorial Review <i>(Rept. 13.10)</i>
10.15	Educational Service
10.30	Educational Service
10.45	Educational Service
11.00	News on the Hour
11.03	Educational Service
11.18	Educational Service
11.33	Educational Service
11.48	Educational Service
12.00	News on the Hour
12.03	Educational Service
12.18	Educational Service
12.30	Music in Perspective <i>(Rept. Thurs 19.30)</i>

13.00	The News
13.10	Editorial Review <i>(From: 10.10)</i>
13.15	Join the Bandwagon <i>(From: Sun. 11.30)</i>
13.45	In a Lighter Mood <i>(From: Sun. 21.06)</i>
14.00	News on the Hour
14.03	The World of Sports <i>(From: Sun. 18.03)</i>
14.30	The Music of <i>(From: Sun. 17.45)</i>
14.45	Kiddias Get Together <i>(Rept. Sat. 08.45)</i>
15.00	News on the Hour
15.03	Records from the Racks
15.30	Islamic Point of View
15.45	Household
16.00+	Network News
16.15	Educational Service
16.30	Focus <i>(From: Sun. 19.30)</i>
17.00	News on the hour
17.03	Just a Minute <i>(Rept. Sat. 11.03)</i>
17.30	Talking Sport
18.00	News on the Hour
18.03	Forces Calling
19.00	News Panorama
19.30	Cultural Forum <i>(Rept. Fri. 18.30)</i>
20.00	News About Africa
20.05	Unchained Melodies <i>(Rept. Thurs. 20.05)</i>
20.15	Educational Service
20.30	Today at the National Assembly <i>(Rept. 22.20)</i>
20.45	Of Music and Men
21.00	News on the Hour
21.03	Moment for Thought <i>(From: 06.55)</i>
21.06	Programme Information
21.08	For Muslims
21.18	Tomorrow on Radio Nigeria Lagos
21.30	Play of the Week <i>(From: Sun. 13.30)</i>
22.00+	Network News
22.15	News Analysis <i>(Rept. Wed. 07.15)</i>
22.20	Today at the National Assembly <i>(From: 20.30)</i>
22.35	Benediction
22.45	Educational Service
23.00	News on the Hour
23.03	Just Jazz
00.00	News at Mid-night
00.05	Clos. Announcements
00.05.30	National Pledge and Anthem

WEDNESDAY

05.30	Drum Signal
05.33	Station Announcement
05.33.30	National Anthem
05.34	National Pledge
06.34.30	Frequency Announcement
05.35	Programme Information
05.40	Awake My Soul
05.50	The way-of the Faithful
06.00	News at Dawn
06.03	Editorial Review <i>(Rept. 10.10&13.10)</i>
06.08	Moment for Thought <i>(Rept. 06.55&21.03)</i>
06.11	Request Show
06.55	Moment for Thought <i>(Rept. 21.03)</i>
07.00+	Network News
07.15	News Analysis <i>(From: Tues. 22.15)</i>
07.20	Request Show
08.00	News on the Hour
08.03	Traditional Music
08.15	From the Congo to the Cape
08.45	Educational Service
09.00	News on the Hour
09.03	Mixed Grill
09.45	Gandu Street <i>(Rept. Sat. 19.45)</i>
10.00	The News
10.10	Editorial Review <i>(Rept. 13.10)</i>
10.15	Educational Service
10.30	Educational Service
10.45	Educational Service
11.00	News on the Hour
11.03	Educational Service
11.18	Educational Service
11.33	Educational Service
11.48	Educational Service
12.00	News on the Hour
12.03	Educational Service
12.18	Educational Service
12.30	Mid-day Rhythms
13.00	The News
13.10	Editorial Review <i>(From: 10.10)</i>
13.15	Magazine A - Z <i>(Rept. Sat. 09.30)</i>
13.45	Music Break
14.00	News on the Hour
14.03	Feminine World
14.33	Music for Children
14.45	Let's find Out <i>(From: Mon. 14.45)</i>
15.00	News on the Hour
15.03	Kaleidoscope
16.00+	Network News
16.15	Educational Service
16.30	Highlife <i>(Rept. Sat. 18.30)</i>
17.00	News on the Hour

RADIO NIGERIA: LAGOS

MF 1088 KHz - 276 metres
Short Wave 4.990MHz - 60 metre band
FM 92.936MHz

0630 - 0006 hrs
0630 - 0006 hrs
0630 - 0005 hrs

10.15	Educational Service	22.35	Interlude	14.00	Break from Books
10.30	Educational Service	22.45	Educational Service	14.08	(Request Programme for Students)
10.45	Educational Service	23.00	News on the Hour	14.30	News on the Hour
11.00	News on the Hour	23.03	Light Instrumental Music	14.03	Take a Hint
11.03	Educational Service	23.20	Khutba	14.08	Break from Books (Cont'd.)
11.18	Educational Service	23.50	(Jumal Sermon for Today)	14.30	Africa This Week
11.33	Educational Service	00.00	Al-Aish	14.45	In the Court-yard
11.48	Educational Service	00.05	News at Mid-night	15.00	(From: Fri. 14.45)
12.00	News on the Hour	00.05.30	Closing announcements	15.00	News on the Hour
12.03	Educational Service		National Pledge and Anthem	15.03	Public Opinion
12.18	Educational Service				(Repr. Sun. 11.03)
12.30	Prelude to Jumal Service (1st Call to Prayer)			15.30	True to Life
13.00	The News	05.30	Drum Signal		(From: Thurs. 08.15)
13.10	Second Call to Prayer	06.33	Station Announcement	15.45	Of Music and Men
13.13	Jumal Service	05.33.30	National Anthem		(Repr. Tues. 20.45)
13.45	Announcers Choice	05.34	National Pledge	16.00+	Network News
14.00	News on the Hour	05.34.30	Frequency Announcement	16.15	Interlude
14.03	Editorial Review (From: 10.10)	05.35	Programme Information	16.30	Sports Pavilion
14.08	Personality of the week (Repr. Sat. 08.03)	05.40	Awake My Soul	18.30	Highlife
14.38	Announcers Choice	05.50	The way of the Faithful	19.00	The News
14.45	In the Court Yard (Repr. Sat. 14.45)	06.00	News at Dawn	19.10	News Analysis
15.00	News on the Hour	06.03	Editorial Review		(From: Fri. 22.15)
15.03	Kaleidoscope	06.10	Moment for Thought (Repr. 06.55 & 21.03)	19.15	Africa This Week
16.00+	Network News	06.13	How una Dey	19.30	With one Accord
16.15	Kaleidoscope	06.55	Moment for Thought (Repr. 21.03)	19.45	Gandu Street
17.00	News on the Hour	07.00+	Network News		(From: Wed. 09.45)
17.03	Sports Preview	07.15	News Analysis	20.00	News About Africa
17.18	Announcers Choice	07.20	Green Revolution	20.05	Nigerian Rhythms
17.30	Feminine World (From: Wed. 14.03)	07.35	How una Dey	20.30	Meet the Sirens
18.00	News on the Hour	08.00	News on the Hour	21.00	News on the Hour
18.03	African Beat	08.03	Personality of the Week (From: Fri. 18.30)	21.03	Moment for Thought (From: 06.55)
18.30	Cultural Forum (From: Tues. 19.30)	08.33	Music for Children	21.06	Programme Information/Interlude
19.00	News Panorama	08.45	Kiddies Get-together (From: Tues. 14.45)	21.10	Cultural Feedback (From: Fri. 20.45)
19.30	Music from our States (From: Sun. 16.45)	09.00	News on the Hour	21.25'	Youth and Islam
19.45	Islamic Mode of Worship	09.03	Jamboree	21.40	Piano Music
20.00	News About Africa	09.30	Magazine A - Z (From: Wed. 13.15)	21.50	Benediction
20.05	Guitar Music	10.00	The News	22.00+	Network News
20.15	Educational Service	10.10	Editorial Review (Repr. 13.10)	22.15	News Analysis (Repr. Sun. 07.15)
20.30	This week at the National Assembly (Repr. 22.20)	10.15	African Beat	22.20	Join the Bandwagon (From: Sun. 11.30)
20.45	Cultural Feedback (From: Tues. 08.15)	10.45	For Children (From: Thurs. 14.45)	22.50	Spiritual Reading
21.00	News on the Hour	11.00	News on the Hour	23.00	News on the Hour
21.03	Moment for Thought (From: 06.55)	11.03	Just A Minute (From: Tues. 17.03)	23.03	Dance Time (From: Thurs. 18.03)
21.06	Programme Information	11.30	Youth Rendezvous (Repr. Mon. 13.15)	23.50'	Spiritual Reading
21.08	For Muslims	12.00	News on the Hour	00.00	News at Mid-night
21.18	Tomorrow on Radio Nigeria	12.03	The Big Beat	00.05	Closing Announcements
21.30	Educational Service	13.00	The News	00.05.30	National Pledge and Anthem
21.45	With one Accord (Repr. Sat. 19.30)	13.10	Editorial Review (From: 10.10)		
22.00	Network News	13.15	House-hold (From: Tues. 15.45)		
22.15	News Analysis (Repr. Sat. 07.15)				
22.20	This week at the National Assembly (From: 20.30)				



RADIO NIGERIA - 2

MF - 1458KHz - 206 metres

0600 - 1205 hrs

FM - Stereo 97.66MHz

1530 - 0000 hrs

0600 - 0000 hrs

SUNDAY

0553	XYLOPHONE CALL SIGNAL
0555	OPENING FORMALITIES/ PROG. SUMMARY
0600	SUNDAY MORNING MELODIES
0630	NEWS BEAT
0635	SUNDAY MORNING MELODIES
0654	STETHOSCOPE - A PROG. ON YOUR HEALTH
0700	NEWS ANALYSIS
0720	PUBLIC SERVICE ANNCT/ LOST AND FOUND
0730	NEWS BEAT
0735	SUNDAY MORNING MELODIES (FINAL)
0800	JUST A CHAT - CHIT - CHAT WITH AN INTERESTING PERSON, HIS MUSIC, HIS FRIENDS, BOOKS
0830	HOBBIES ETC.
0835	NEWS BEAT
0930	WISHING YOU WELL
0930	NEWS BEAT
0935	WISHING YOU WELL (CONTINUES)
1J00	RHYTHM A GO - GO? MIXED BAG OF INSTRUMENT MUSIC FOR SUNDAY LISTENING.
1030	NEWS BEAT
1035	HELPING HAND (RPT. TUE 2000)
1060	INTERLUDE
1100	NEW ON THE SCENE
1200	WORLD AT NOON
1210	SUNDAY BRUNCH
1300	THE LAW AND YOU (RPT. FRI, 1900)
1305	SUNDAY BRUNCH
1330	NEWS BEAT
1336	SUNDAY BRUNCH
1400	CITIZEN MUDA (FROM FRI, 223)
1430	NEWS BEAT
1425	SUNDAY STEREO FIESTA - FAMILY FAVOURITE, REQUEST AND CHIT-CHAT
1530	NEWS BEAT
1535	SUNDAY STEREO FIESTA - (CONTINUES)
1600	THE NEWS
1615	PUBLIC SERVICE ANNCT/ LOST AND FOUND
1630	NEWS BEAT
1635	MUSIC FOR YOU
1645	LONG THROAT JUNCTION (FROM SAT, 1400)
1700	TOP TEN (FROM SAT, 1435)
1800	WORLD AT SIX
1810	SHOWTIME
1840	MELODY LANE
1930	NEWS BEAT
1935	STAR CHOICE RPT. FRI, 2035)
2030	NEWS BEAT
2035	RHYTHM RENDEZVOUS
2130	NEWS BEAT
2135	RHYTHM RENDEZVOUS
2200	NEWS ANALYSIS
2220	PUBLIC SERVICE A LOST AND FOUND
2230	NEWS BEAT
2235	REFLECTIONS
2245	INTERLUDE

MONDAY

0553	XYLOPHONE CALL SIGNALS
0555	OPENING FORMALITIES/ PROG. SUMMARY
0600	DAWN SHOW
0630	NEWS BEAT
0635	PERISCOPE
0640	DAWN SHOW
0700	NEWS ANALYSIS
0720	PUBLIC SERVICE/LOST & FOUND
0730	NEWS BEAT
0735	DAWN SHOW
0830	NEWS BEAT
0835	FOR YOU AT HOME (EASILY FLOWING MUSIC FOR THOSE AT HOME)
0900	WOMAN TO WOMAN RPT. (TUES, 1900)
0930	NEWS BEAT
0935	WOMAN TO WOMAN
1000	SOUNDS TROPICANA
1030	NEWS BEAT
1035	SOUNDS TROPICANA (CONTINUES)
1100	PERISCOPE
1105	REGGAE TIME
1200	THE WORLD AT NOON
1210	WHAT THE PAPERS SAY
1215	THAT'S LIFE (RPT. WED, 1820)
1230	LUNCH BREAK (A SESSION OF LIGHT MUSIC AT LUNCH TIME)
1330	NEWS BEAT
1335	BUKA CONNECTION
1400	PERISCOPE
1407	BUKA CONNECTION (CONTINUES)
1430	NEWS BEAT
1435	BUKA CONNECTION (CONTINUES)
1530	NEWS BEAT
1535	HOMEWARD BOUND (A DISCO TRIP FOR THOSE ON THE MOVE)
1654	PERISCOPE
1600	NETWORK NEWS
1615	PUBLIC SERVICE AND LOST AND FOUND
1630	NEWS BEAT
1635	HOMEWARD BOUND
1700	STETHOSCOPE (A PROG. ON YOUR HEALTH FROM SUN 0645)
1705	YOUR CHOICE (A REQUEST PROG.)
1730	NEWS BEAT
1735	YOUR CHOICE - CONTINUES
1800	THE WORLD AT SIX
1810	PERISCOPE (FROM 0635)
1815	SPOT THE TUNES
1840	MELODY LANE
1930	NEWS BEAT
1935	MELODY LANE
2025	NEWS BEAT
2030	RN-2 PROG. PREVIEW - A LOOK AT PROGS FOR THE NEXT DAY ON RN-2
2035	NEWS BEAT
2035	RHYTHM RENDEZVOUS (MIXED RHYTHM MIC MUSIC)

2130	NEWS BEAT
2135	JUJU MUSIC
2200	NETWORK NEWS/ANALYSIS
2220	PERISCOPE
2225	PUBLIC SERVICE ANNCT/ LOST & FOUND
2230	NEWS BEAT
2235	AT THE TURNTABLE
2330	NEWS BEAT
2335	AT THE TURNTABLE (CONTINUES)
2400	CLOSE DOWN

TUESDAY

0553	XYLOPHONE CALL SIGNAL
0555	OPENING FORMALITIES/ PROG. SUMMARY
0600	DAWN SHOW
0630	NEWS BEAT
0635	PERISCOPE
0640	DAWN SHOW
0700	NEWS ANALYSIS
0720	PUBLIC SERVICE ANNCT/ LOST AND FOUND
0730	NEWS BEAT
0735	DAWN SHOW
0830	NEWS BEAT
0835	FOR YOU AT HOME
0900	ALUTE UNA (A REQUEST PROG. FOR TRADERS IN PIDGIN)
0935	I SALUTE UNA
1000	DISCO PARADE
1030	NEWS BEAT
1035	DISCOPARADE
1100	PERISCOPE (FROM 06.35)
1105	JUJU MUSIC
1200	THE WORLD AT NOON
1210	WHAT THE PAPERS SAY
1215	LUNCH BREAK (LIGHT MUSIC)
1330	NEWS BEAT
1335	BUKA CONNECTION
1400	PERISCOPE (FROM 11.00)
1407	BUKA CONNECTION (CONTINUES)
1430	NEWS BEAT
1435	BUKA CONNECTION
1530	NEWS BEAT
1535	HOMEWARD BOUND



RADIO NIGERIA -2

MF - 1458KHz - 206 metres

0600 - 1205 hrs

FM - Stereo 97.65MHz

1530 - 0000 hrs
0600 - 0000 hrs

1554	PERISCOPE (FROM 1400)	0830	NEWS BEAT	0335	IN A SENTIMENTAL MOOD
1000	NEWS NETWORK	0835	FOR YOU AT HOME	2330	NEWS BEAT
1615	PUBLIC SERVICE ANNCT/ LOST AND FOUND	0900	WOMAN TO WOMAN (RPT. THURSDAY 1900)	2335	IN A SENTIMENTAL MOOD
1630	NEWS BEAT	0930	NEWS BEAT	2400	CLOSE DOWN
1635	HOMEWARD BOUND	0935	WOMAN TO WOMAN		
1700	HIGHLIFE TIME	1000	MUSIC WHILE YOU WORK		
1730	NEWS BEAT	1030	NEWS BEAT		
1735	HIGHLIFE TIME	1035	MUSIC WHILE YOU WORK		
1800	THE WORLD AT SIX	1100	PERISCOPE	0553	XYLOPHONE CALL SIGN
1810	PERISCOPE (FROM 1554)	1105	REGGAE TIME	0555	OPENING FORMALITIES
1815	TEN AND TWENTY BEAT	1200	THE WORLD AT NOON	0600	DAWN SHOW
1900	WOMAN TO WOMAN FROM WED 0900)	1210	WHAT THE PAPERS SAY	0630	NEWS BEAT
		1215	JUST A CHAT (FROM SUN. 0800)	0635	PERISCOPE
1930	NEWS BEAT			0640	DAWN SHOW
1935	WOMAN TO WOMAN	1245	LUNCH BREAK	0700	NEWS ANALYSIS
2000	THE HELPING HAND (FROM SUN. 1035)	1330	NEWS BEAT	0720	PUBLIC SERVICE ANNCT
		1335	LUNCH TIME REQUEST	0730	NEWS BEAT
2015	RN-2 PROGRAMME PRE- VIEW	1400	PERISCOPE	0735	DAWN SHOW
		1407	BUKA CONNECTION	0830	NEWS BEAT
2020	MY CHOICE		CONTINUES	0835	FOR YOU AT HOME
2030	NEWS BEAT	1438	NEWS BEAT	0900	MASCULINE LINE (RPT. SAT. 1300)
2035	RHYTHM RENDEZVOUS	1435	BUKA CONNECTION	0830	NEWS BEAT
2130	NEWS BEAT	1530	NEWS BEAT	0835	MASCULINE LINE
2135	RHYTHM RENDEZVOUS	1535	HOMEWARD BOUND	1000	SOUNDS TROPICANA
2200	NEWS/ANALYSIS	1540	PERISCOPE	1030	NEWS BEAT
2220	PERISCOPE	1600	NEWS	1035	SOUNDS TROPICANA (CONTINUES)
2225	PUBLIC SERVICE ANNCT/ LOST & FOUND	1615	PUBLIC SERVICE ANNCTS.	1100	PERISCOPE
		1630	NEWS BEAT	1105	HIGHLIFE TIME
2230	NEWS BEAT	1635	HOMEWARD BOUND	1200	THE WORLD AT NOON
2235	BEDTIME MELODIES	1700	POP ROUND THE WORLD	1210	WHAT THE PAPERS SAY
2335	BEDTIME MELODIES	1730	NEWS BEAT	1215	LUNCH BREAK
2400	CLOSE DCWN	1800	POP ROUND THE WORLD	1330	NEWS BEAT
		1810	WORLD AT SIX	1335	BUKA CONNECTION
		1815	PERISCOPE	1400	PERISCOPE
		1820	SPOT THE TUNE	1407	BUKA CONNECTION
		1830	THAT'S LIFE	1430	CONTINUES.
			MASCULINE LINE (RPT. THURS. 0900)	1435	NEWS BEAT
0553	XYLOPHONE CALL	1930	NEWS BEAT	1530	BUKA CONNECTION
	SIGNAL	1935	JUJU MUSIC	1535	NEWS BEAT
0555	OPENING FORMALITIES/ PROG. SUMMARY	2025	rn-2 PROGRAMME PRE- VIEW	1540	HOMEWARD BOUND
				1554	PERISCOPE
0600	DAWN SHOW	2030	NEWS BEAT	1600	NETWORK NEWS
0630	NEWS BEAT	2030	RHYTHM RENDEZVOUS	1615	PUBLIC SERVICE ANN/LOST AND FOUND
0635	PERISCOPE	2130	NEWS BEAT	1630	NEWS BEAT
0640	DAWN SHOW	2135	RHYTHM RENDEZVOUS	1635	HOMEWARD BOUND
0700	NEWS ANALYSIS	2200	NEWS ANALYSIS	1700	YOURS FOR THE ASKING (REQUEST PROG.)
0720	PUBLIC SERVICE ANNCT/ LOST AND FOUND	2220	PERISCOPE	1730	NEWS BEAT
		2220	PUBLIC SERVICE ANNCT/ LOST AND FOUND	1735	YOURS FOR THE ASKING (CONTINUES)
0730	NEWS BEAT	2230	NEWS BEAT	1800	THE WORLD AT SIX
0735	DAWN SHOW			1810	PERISCOPE (FROM 0635)
				1815	ALBUM SHOW CASE (RPT. FRI. 1905)
				1900	WOMAN TO WOMAN (RPT. FROM 09.00HRS)
				1930	NEWS BEAT
				1935	WOMAN TO WOMAN
				2000	JUJU MUSIC
				2025	RN-2 PROGRAMME PREVIEW
				2030	NEWS BEAT
				2035	MELODY LANE
				2130	NEWS BEAT
				2135	MELODY LANE
				2200	NETWORK NEWS ANALYSIS
				2220	PERISCOPE
				2225	PUBLIC SERVICE ANNCT AND FOUND
				2230	NEWS BEAT
				2235	STEREO JAZZ CLUB
				2330	NEWS BEAT
				2335	STEREO JAZZ CLUB
				2400	CLOSE DOWN

THURSDAY

WEDNESDAY



Miss Iyoin Ugansanwo, Producer of "Woman To Woman", every Wed. at 0900hrs.

FRIDAY

0553	XYLOPHONE CALL SIGN
0555	OPENING FORMALITIES
0600	DAWN SHOW
0630	NEWS BEAT
0635	PERISCOPE
0640	DAWN SHOW
0700	NETWORK NEWS ANALYSIS
0720	PUBLIC SERVICE ANN/LOST & FOUND
0730	NEWS BEAT
0735	DAWN SHOW
0830	NEWS BEAT
0835	FOR YOU AT HOME
0900	WOMAN TO WOMAN
0930	NEWS BEAT
0935	WOMAN TO WOMAN
1000	MUSIC ON THE MOVE
1030	NEWS BEAT
1035	MUSIC ON THE MOVE
1050	NA TRUE I TALK
1100	PERISCOPE
1105	REGGAE TIME
1200	THE WORLD AT NOON
1210	WHAT THE PAPERS SAY
1215	THAT'S LIFE (FROM WED. 1820)
1230	LUNCH BREAK
1330	NEWS BEAT
1335	BUKA CONNECTION
1400	PERISCOPE
1407	BUKA CONNECTION CONTINUES
1430	NEWS BEAT
1435	BUKA CONNECTION
1530	NEWS BEAT
1535	HOMeward BOUND
1554	PERISCOPE
1600	NETWORK NEWS
1615	PUBLIC SERVICE/LOST & FOUND
1630	NEWS BEAT
1635	HOMeward BOUND
1700	SHOWTIME (RPT. SUN. 1810)
1730	NEWS BEAT
1735	MARTINS STREET SPECIAL (RPT. SAT. 1835)
1800	WORLD AT SIX
1810	PERISCOPE
1815	I THRO-WAY SALUTE
1900	THE LAW AND YOU (FROM SUN. 1300)
1905	ALBUM SHOWCASE (FROM THURS. 1815)
1930	NEWS BEAT
1735	MARTINS STREET SPECIAL (RPT. SAT. 1835)
1800	WORLD AT SIX
1810	PERISCOPE
1815	I THRO-WAY SALUTE
1900	THE LAW AND YOU (FROM SUN 1300)
1905	ALBUM SHOWCASE (FROM THURS. 1815)
1930	NEWS BEAT
1935	ALBUM SHOWCASE
2000	MARKET TRENDS
2030	NEWS BEAT
2035	JUJU MUSIC
2100	STAR CHOICE
2130	NEWS BEAT
2135	STAR CHOICE
2200	NETWORK NEWS ANALYSIS
2220	PERISCOPE
2228	PUBLIC SERVICE ANNCT/ LOST & FOUND

2230	NEWS BEAT
2235	CITIZEN MUDA (RPT. SUN. 1400)
2305	FRIDAY NITE MUSIC NITE
2330	NEWS BEAT
2335	FRIDAY NITE MUSIC NITE
2400	CLOSE DOWN

SATURDAY

0553	XYLOPHONE CALL SIGNAL
0555	OPENING FORMALITIES/ PROG. SUMMARY
0600	DAWN SHOW
0630	NEWS BEAT
0635	PERISCOPE
0640	DAWN SHOW
0700	NEWS ANALYSIS
0720	PUBLIC SERVICE ANNCT/ LOST & FOUND
0730	NEWS BEAT
0735	DAWN SHOW
0830	NEWS BEAT
0835	YOUR CHOICE
0900	JUNIOR CHOICE
0930	NEWS BEAT
0935	YOUR CHOICE
1000	MARKET TRENDS (FROM FRI. 2000)
1030	NEWS BEAT
1035	CALYPSO MUSIC
1100	PERISCOPE
1105	POP ROUND THE WORLD
1200	THE WORLD AT NOON
1210	WHAT THE PAPERS SAY
1215	PERISCOPE

1220	POP ROUND THE WORLD
1300	MASCULINE LINE (FROM THURS. 0900)
1330	NEWS BEAT
1335	MASCULINE LINE
1400	LONG THROAT JUNCTION (RPT. SUN. 1645)
1415	HIGHLIFE TIME
1430	NEWS BEAT
1435	TOP TEN (RPT. SUN. 1700)
1530	NEWS BEAT
1535	MARTINS STREET SPECIAL (FROM FRIDAY 1735)
1615	PERISCOPE
1620	PUBLIC SERVICE/ANNCT/ LOST AND FOUND
1630	SPORTS CALL
1830	NEWS BEAT
1835	DATeline LAGOS
1845	INTERLUDE
1860	NA TRUE I TALK
1900	ARTIST OF THE WEEK
1930	NEWS BEAT
1935	JUJU MUSIC
2030	NEWS BEAT
2035	RHYTHM RENDEZVOUS
2130	NEWS BEAT
2135	JAZZ TILL TEN
2200	NEWS ANALYSIS
2220	PERISCOPE
2225	PUBLIC SERVICE ANNCT/ LOST & FOUND
2230	NEWS BEAT
2235	SATURDAY NIGHT DISCO
2330	NEWS BEAT
2335	SATURDAY NIGHT DISCO
2400	CLOSE DOWN



A guitarist entertaining his audience "Music while you work can be heard every Wed. at 1000hrs. (RN - 2)

RADIO NIGERIA: ENUGU

6.025 MHz (49 Meters) Short Wave
4.750 MHz (60 Meters) Short Wave

SUNDAY

- 0530 CALL SIGN
0533 STATION ANNOUNCEMENTS (ENGLISH/IGBO)
0533.30 NATIONAL ANTHEM/THE PLEDGE
0535 FREQUENCY ANNOUNCEMENT/ PROGRAMME SUMMARY
0545 EKPELE UTUTU (MORNING PRAYERS)
0600 NEWS SUMMARY (ENGLISH/IGBO)
0606 CHI EFOGO (MIXED MUSIC WITH RELIGIOUS BIAS)
0615 STATE NEWS (IGBO)
0625 EGWU OBI UTO (BRIGHT MUSIC)
0700* NATIONAL NETWORK NEWS/ ANALYSIS
0720 EGWU OBI UTO (BRIGHT MUSIC)
0800 STATE NEWS (ENGLISH)
0810 OZI EKENE (REQUEST PROGRAMME)
0900 NATIONAL NETWORK NEWS/ ANALYSIS (IGBO)
0920 SOLUM KENE CHUKWU (LET'S WORSHIP)
1000 PROGRAMME PROMOTIONS/ ANNOUNCEMENTS/MUSIC (ENGLISH/IGBO)
1030 IGBO PLAY (RPT. WED. 2230 HRS.)
1100 NEWS HIGHLIGHTS (ENGLISH/IGBO)
1110 EGWU IRO (FOLK MUSIC)
1130 ABU OZI OMA (CHORAL SINGING) (RPT. MON. 1430 HRS.)
1200 NEWS SUMMARY (IGBO)
1205 ZOLIANU EGWU (DISC JOCKEYING PROGRAMME)
1300x WORLD NEWS
1315 EZI N'UNO NOLLANU (FAMILY FAVOURITES)
1400 NEWS SUMMARY (ENGLISH/IGBO)
1406 EZI N'UNO NOLLANU (FAMILY FAVOURITES)
1430 OMENKA (ARTISTE OF THE WEEK) (FROM SAT. 2130 HRS.)
1500 NEWS SUMMARY (IGBO).
1503 ABU NA SO ANYI USO (HYMNS WE LOVE)
1545 EGWU NKEM (ANNOUNCER'S CHOICE)
1555 NGIGA (PROGRAMME PROMOTION)
1600* NATIONAL NETWORK NEWS
1615 EKENE ONINE ANYA (HOSPITAL REQUEST)
1700 STATE NEWS (IGBO)
1715 MMIMI ILO (MUSIC) (RPT. MON. 1715 HRS. & FRI 2130 HRS)
1730 EGWU ANYI (TRADITIONAL MUSIC FROM ENUGU/NKANU LGAs)
1800 NATIONAL NETWORK NEWS (IGBO)
1815 KOTA EGWUA (GUESTS THE TUNE - AUDIENCE PARTICIPATION PROGRAMME) (RPT. WED. 1615 HRS.)
1830 EGWU ANYI (TRADITIONAL MUSIC FROM AWKA/ AGUATA LGAs)
1900 WORLD NEWS (ENGLISH)
1915 AKUKO ORI (FOLK STORY) (RPT. MON. 2115 HRS)

- 1930 OGE UMUNWANYI (WOMEN'S PROGRAMME)
2000 NATIONAL NETWORK NEWS (IGBO)
2015 INSTRUMENTAL MUSIC
2020 SUNDAY NIGHT SERVICE (ENGLISH/IGBO)
2100 WORLD NEWS (IGBO)
2115 EGWU IRO (FOLK MUSIC)
2130 GOSPEL SONGS (VARIOUS LANGUAGES)
2200 NATIONAL NETWORK NEWS/ ANALYSIS
2220 EGWU OGE GBOO (THE EVER-GREENS)
2300 AKUKO UCHICHI (LATE NIGHT NEWS)
2303 LARU JUU (A PROGRAMME OF SOFT, LIGHT & SWEET MUSIC) - DCA.
0000 NEWS AT MIDNIGHT (ENGLISH/IGBO)
0006 CLOSE DOWN/NATIONAL ANTHEM/THE PLEDGE

MONDAY

- 0530 CALL SIGN
0533 STATION ANNOUNCEMENT (ENGLISH/IGBO)
0533.30 NATIONAL ANTHEM/THE PLEDGE
0535 FREQUENCY ANNOUNCEMENTS/PROGRAMME SUMMARY (ENGLISH/IGBO)
0645 EKPELE UTUTU (MORNING PRAYERS)
0555 INSTRUMENTAL MUSIC
0600 NEWS SUMMARY (ENGLISH/IGBO)
0606 ANAMBRA ECHOES (MIXED TRADITIONAL MUSIC FROM ANAMBRA STATE)
0615 STATE NEWS/COMMENTARY (IGBO)
0630 ANAMBRA ECHOES (MIXED TRADITIONAL MUSIC FROM ANAMBRA STATE)
0700 NATIONAL NETWORK NEWS/ ANALYSIS
0720 SPOTLIGHT ON FEDERAL PROJECTS (ENGLISH/IGBO) (RPT. 1545 HRS. & 1815 HRS.)
0730 ANAMBRA ECHOES (MIXED TRADITIONAL MUSIC FROM ANAMBRA STATE)
0800 STATE NEWS (ENGLISH)
0810 EGWU NA OZI (REQUEST PROGRAMME)
0900 NATIONAL NETWORK NEWS/ ANALYSIS (IGBO)
0920 EGWU NA OZI (REQUEST PROGRAMME)
1000 EGWU ORI (FOLK MUSIC)
1010 PUBLIC SERVICE ANNOUNCEMENTS (ENGLISH/IGBO)
1015 ZOLIANU EGWU (DISC JOCKEYING PROGRAMME)
1100 NEWS HIGHLIGHTS (ENGLISH/IGBO)
1110 ZOLIANU EGWU (DISC JOCKEYING PROGRAMME)
1200 NEWS SUMMARY (IGBO)
1205 JOLLY GOOD SHOW (MUSIC, TALKS, INTERVIEWS, CHIT CHAT, HINTS, REQUESTS, VOX POP)
1300x WORLD NEWS/EDITORIALS

- 1315 NDI-OLU-UBI NDEWONU (REQUEST FOR FARMERS)
1400 ABU OZI OMA (FROM SUN. HRS)
1430 EKENE UMUAKA (REQUEST FOR KIDS)
1500 EGWU NGINGA (SOCIAL MUSIC)
1545 SPOTLIGHT ON FEDERAL PROJECTS (ENGLISH/IGBO) (RPT. 1815 HRS.)
1555 NWE NNDI (INTERLUDE)
1600* NATIONAL NETWORK NEWS
1615 NDI NO N'UNO NDEWO (MUSIC FOR YOU AT HOME)
1700 STATE NEWS/COMMENTARY (IGBO)
1715 MMIMI ILO (MUSIC) (RPT. FRI. 2130 HRS)
1730 EGWU ANYI (TRADITIONAL MUSIC FROM AWGU/EZEAGU LGAs)
1800 NATIONAL NETWORK NEWS (IGBO)
1815 SPOTLIGHT ON FEDERAL PROJECTS (ENGLISH/IGBO)
1825 NWE NNDI (INTERLUDE)
1830 EGWU ANYI (TRADITIONAL MUSIC FROM ANAMBRA/NJI-KOKA LGAs)
1800 NEWS PANORAMA
1830 MNI NKE OBI (MUSIC FOR YOUR DELIGHT)
2000 VALU OZI GI (REQUEST)
2100 WORLD NEWS/EDITORIAL (IGBO)
2115 AKUKO IRO (FOLK STORY) (FROM SUN. 1915 HRS.)
2130 EGWU NKEM (ANNOUNCER'S CHOICE)
2145 TA N'UNO NZUKO ETITI (NATIONAL)
2200 NATIONAL NETWORK NEWS/ ANALYSIS
2220 EGWU NDI AFBATAOBI ANYI (MUSIC OF OUR NEIGHBOURS)
2300 AKUKO UGBUCHI (LATE NIGHT NEWS)
2303 LARU JUU (A PROGRAMME OF SOFT, LIGHT & SWEET MUSIC)
0000 NEWS AT MIDNIGHT (ENGLISH/IGBO)
0006 CLOSE DOWN/NATIONAL ANTHEM/THE PLEDGE

TUESDAY

- 0530 CALL SIGN
0533 STATION ANNOUNCEMENT (ENGLISH/IGBO)
0533.30 NATIONAL ANTHEM/THE PLEDGE
0535 FREQUENCY ANNOUNCEMENTS/PROGRAMME SUMMARY (ENGLISH/IGBO)
0545 EKPELE UTUTU (MORNING PRAYERS)
0555 INSTRUMENTAL MUSIC
0600 NEWS SUMMARY (ENGLISH/IGBO)
0606 UNU ABOLA CHI (MUSIC PROGRAMME)
0615 STATE NEWS/COMMENTARY (IGBO)
0630 UNU ABOLA CHI (MUSIC PROGRAMME)
0700 NATIONAL NETWORK NEWS/ ANALYSIS

RADIO NIGERIA: ENUGU

6.025 MHz (40 Meters) Short Wave
4.750 MHz (60 Meters) Short Wave

0720	SPOTLIGHT ON FEDERAL PROJECTS (ENGLISH/IGBO) (RPT. 1645 HRS. & 1815 HRS)	2250	PUBLIC SERVICE ANNOUNCEMENTS/MUSIC	1315	KANYI NOLIA (TALKS, INTERVIEWS, HINTS, TIT BITS, CHIT CHAT, VOX POP, REQUESTS)
0730	UNU ABOLA CHI (MUSIC PROGRAMME)	2300	AKUKO UCHICHI (LATE NIGHT NEWS)	1400	NDI-OLU NDEWONU (MUSIC WHILE YOU WORK)
0800	STATE NEWS (ENGLISH)	2303	LARI JUU (A PROGRAMME OF SOFT, LIGHT & SWEET MUSIC)	1430	MGBWA UMUAKA (RPT. THUR 1415 HRS.) (CHILDREN'S CORNER)
0810	EZIGBO IFE EMEE (PROGRAMME OF INTERVIEWS & REQUESTS)	0000	NEWS AT MIDNIGHT (ENGLISH/IGBO)	1500	NWE NDIDI/PUBLIC SERVICE ANNOUNCEMENTS (ENGLISH/IGBO)
0900	NATIONAL NETWORK NEWS/ANALYSIS (IGBO)	0006	CLOSE DOWN/NATIONAL ANTHEM/THE PLEDGE	1510	NGIGA (PROGRAMME PROMOTION)
0920	EZIGBO IFE EMEE (PROGRAMME OF INTERVIEWS & REQUESTS)		WEDNESDAY	1515	KOTA EGWUA (GUESS THE TUNE - AUDIENCE PARTICIPATION PROGRAMME) (FROM SUN. 1815 HRS.)
1000	EKENE NDI AHIA (REQUEST FOR TRADERS)	0530	CALL SIGN	1530	UCHE UMUAKA (RPT. FRI. 1645 HRS.) (CHILDREN'S OPINION)
1100	NEWS HIGHLIGHTS (IGBO)	0533	STATION ANNOUNCEMENT (ENGLISH/IGBO)	1545	SPOTLIGHT ON FEDERAL PROJECTS (ENGLISH/IGBO) (RPT. 1815 HRS.)
1110	EGWU NGANGA (SOCIAL MUSIC)	0633.30	NATIONAL ANTHEM/THE PLEDGE	1555	NWE NDIDI (INTERLUDE)
1200	NEWS SUMMARY (IGBO)	0636	FREQUENCY ANNOUNCEMENTS/PROGRAMME SUMMARY (ENGLISH/IGBO)	1600*	NATIONAL NETWORK NEWS CHILDREN'S TIME (TPT: SAT 1345 HRS.)
1205	MUSIC EXTRAVANGANZA	0636	0636 FREQUENCY ANNOUNCEMENTS/PROGRAMME SUMMARY (ENGLISH/IGBO)	1600*	0636 FREQUENCY ANNOUNCEMENTS/PROGRAMME SUMMARY (ENGLISH/IGBO)
1205x	WORLD NEWS/EDITORIALS	0636	0636 FREQUENCY ANNOUNCEMENTS/PROGRAMME SUMMARY (ENGLISH/IGBO)	1615	0636 FREQUENCY ANNOUNCEMENTS/PROGRAMME SUMMARY (ENGLISH/IGBO)
1300x	WE DE SALUTE UNA (PIDGIN REQUEST PROGRAMME)	0636	0636 FREQUENCY ANNOUNCEMENTS/PROGRAMME SUMMARY (ENGLISH/IGBO)	1630	0636 FREQUENCY ANNOUNCEMENTS/PROGRAMME SUMMARY (ENGLISH/IGBO)
1315	NDI-OLU NDEWONU (MUSIC WHILE YOU WORK)	0658	0658 INSTRUMENTAL MUSIC	1700	0658 INSTRUMENTAL MUSIC
1400	NDI-OLU NDEWONU (MUSIC WHILE YOU WORK)	0600	0600 NEWS SUMMARY (ENGLISH/IGBO)	1715	0600 NEWS SUMMARY (ENGLISH/IGBO)
1500	EGWU NDI BEANYI (MIXED TRADITIONAL MUSIC FROM NIGERIA)	0606	0606 HOW UNA DE (MUSIC PROGRAMME IN PIDGIN ENGLISH)	1730	0606 HOW UNA DE (MUSIC PROGRAMME IN PIDGIN ENGLISH)
1545	SPOTLIGHT ON FEDERAL PROJECTS (ENGLISH/IGBO)	0615	0615 STATE NEWS/COMMENTARY (IGBO)	1730	0615 STATE NEWS/COMMENTARY (IGBO)
1555	NGIGA (PROGRAMME PROMOTION)	0630	0630 HOW UNA DE (MUSIC PROGRAMME IN PIDGIN ENGLISH)	1730	0630 HOW UNA DE (MUSIC PROGRAMME IN PIDGIN ENGLISH)
1600*	NATIONAL NETWORK NEWS IFE EGWU NDI (IGBO)	0630	0630 HOW UNA DE (MUSIC PROGRAMME IN PIDGIN ENGLISH)	1730	0630 HOW UNA DE (MUSIC PROGRAMME IN PIDGIN ENGLISH)
1615	NATIONAL NETWORK NEWS IFE EGWU NDI (IGBO) (ILLUSTRATIVE TALK ON IGBO TRADITIONAL MUSICAL INSTRUMENTS) (RPT. THUS. 1645 HRS.)	07000*	07000* NATIONAL NETWORK NEWS/ANALYSIS	1730	07000* NATIONAL NETWORK NEWS/ANALYSIS
1630	IRU UKA (RADIO DEBATE) (RPT. THURS. 1930 HRS.)	0720	0720 SPOTLIGHT ON FEDERAL PROJECTS (ENGLISH/IGBO) (RPT. 1645 HRS. & 1815 HRS.)	1730	0720 SPOTLIGHT ON FEDERAL PROJECTS (ENGLISH/IGBO) (RPT. 1645 HRS. & 1815 HRS.)
1700	STATE NEWS/COMMENTARY (IGBO)	0730	0730 NOW UNA DE (MUSIC PROGRAMME IN PIDGIN ENGLISH)	1800	0730 NOW UNA DE (MUSIC PROGRAMME IN PIDGIN ENGLISH)
1715	EGWU NKEM (ANNOUNCER'S CHOICE)	0800	0800 STATE NEWS (ENGLISH)	1815	0800 STATE NEWS (ENGLISH)
1730	EGWU ANYI (TRADITIONAL MUSIC FROM ABAKALIKI/AWGU LGAS)	0810	0810 EKENE UMWANYI (REQUEST FOR WOMEN)	1825	0810 EKENE UMWANYI (REQUEST FOR WOMEN)
1800	NATIONAL NETWORK NEWS (IGBO)	0900	0900 NATIONAL NETWORK NEWS/ANALYSIS (IGBO)	1830	0900 NATIONAL NETWORK NEWS/ANALYSIS (IGBO)
1815	SPOTLIGHT ON FEDERAL PROJECTS (ENGLISH/IGBO)	0920	0920 KEDUNU (GENERAL REQUEST)	1900	0920 KEDUNU (GENERAL REQUEST)
1825	NWE NDIDI (INTERLUDE)	1000	1000 PUBLIC SERVICE ANNOUNCEMENTS/MUSIC (ENGLISH/IGBO)	1900	1000 PUBLIC SERVICE ANNOUNCEMENTS/MUSIC (ENGLISH/IGBO)
1830	EGWU ANYI (TRADITIONAL MUSIC FROM ISUZU/NNEWI LGAs)	1015	1015 EGWU IRO (FOLK MUSIC)	1930	1015 EGWU IRO (FOLK MUSIC)
1900	NEWS PANORAMA	1030	1030 OMENANI (CULTURAL FEATURE) (RPT. SAT, 1830 HRS.)	2000	1030 OMENANI (CULTURAL FEATURE) (RPT. SAT, 1830 HRS.)
1930	NGBAKO NDI IYOM (PROGRAMME OF MUSIC, TIT BITS & HOUSEHOLD HINTS FOR WOMEN)	1100	1100 NEWS HIGHLIGHTS (IGBO)	2030	1100 NEWS HIGHLIGHTS (IGBO)
2000	OZI EKENE (REQUEST PROGRAMME)	1110	1110 EGWU NGANGA (SOCIAL MUSIC)	2100	1110 EGWU NGANGA (SOCIAL MUSIC)
2100	WORLD NEWS/EDITORIAL (IGBO)	1200	1200 NEWS SUMMARY (IGBO)	2118	1200 NEWS SUMMARY (IGBO)
2115	PUBLIC SERVICE ANNOUNCEMENTS/EGWU NDI (AGBATABOBI ANYI)	1205	1205 KANYI NOLIA (TALKS, INTERVIEWS, HINTS, TIT BITS, CHIT CHAT, VOX POP, REQUESTS)	2158	1205 KANYI NOLIA (TALKS, INTERVIEWS, HINTS, TIT BITS, CHIT CHAT, VOX POP, REQUESTS)
2130	EGWU DICHFICHE (MIXED MUSIC)	1300:	1300: WORLD NEWS/EDITORIAL		
2145+	TANUNO NZUKO ETITI (NATIONAL)				
2200	NATIONAL NETWORK NEWS/ANALYSIS				
2220	OGANIRU (FOCUS ON COMMUNITY DEVELOPMENT) (RPT. WED. 2030 HRS.)				

RADIO NIGERIA: ENUGU

8.025 MHz (48 Meters) Short Wave
4.750 MHz (60 Meters) Short Wave

2145+	TA N'UNO NZUKO ETITI (NATIONAL)	0720	SPOTLIGHT ON FEDERAL PROJECTS (ENGLISH/IGBO) (RPT. 1545 AND 1815 HRS.)	1545	SPOTLIGHT ON FEDERAL PROJECTS (ENGLISH/IGBO) (RPT. 1815 HRS.)
2200	NATIONAL NETWORK NEWS/ ANALYSIS	0730	EZI NA UNO EKENE (MUSIC) PROGRAMME FOR THE FAMILY)	1600*	NATIONAL NETWORK NEWS (IGBO) (REQUEST)
2220	NWE NDIDI (INTERLUDE)	0800	STATE NEWS (ENGLISH)	1615	IFE EGWU NDI (IGBO ILLUSTRATIVE TALK ON IGBO TRADITIONAL MUSIC FROM INSTRUMENTS) (MUSICAL 1615 HRS., 1615 HRS.)
2230	IGBO PLAY (FROM SUN. 1030 HRS.)	0815	NDI BEANYI DALUNU (REQUEST)	1645	STATE NEWS/COMMENTARY (IGBO)
2300	AKUKO UCHICHI (LATE NIGHT NEWS)	0900	NATIONAL NETWORK NEWS/ ANALYSIS (IGBO)	1700	STATE NEWS/COMMENTARY (IGBO)
2303	LARU JUU (A PROGRAMME OF SOFT, LIGHT AND SWEET MUSIC)	0920	EGWU MMEME (ANAMBRA STATE FESTIVAL MUSIC) PUBLIC SERVICE ANNOUNCEMENTS (ENGLISH/IGBO)	1715	AKO N'UCHE (RPT. FRI. 1715 HRS.) WISDOM OF OUF FATHERS)
0000	NEWS AT MIDNIGHT (ENGLISH/IGBO)	1000	NWE NDIDI (INTERLUDE)	1730	EGWU ANYI (TRADITIONAL MUSIC FROM NSUKKA/OJI RIVER LGAs)
0006	CLOSE DOWN/NATIONAL ANTHEM/THE PLEDGE	1015	FEMINE FANCIES (A PROGRAMME OF TIT-BITS, HOUSEHOLD HINTS AND MUSIC FOR WOMEN)	1800	NATIONAL NETWORK NEWS (IGBO)
		4100	NEWS HIGHLIGHTS (ENGLISH/IGBO)	1815	SPOTLIGHT ON FEDERAL PROJECTS (ENGLISH/IGBO)
		1110	EGWU NGANGA (SOCIAL MUSIC)	1825	EGWU NKEM (ANNOUNCER'S CHOICE)
		1200	NEWS SUMMARY	1830	EGWU ANYI (TRADITIONAL MUSIC FROM IKWO/ISHIELU LGAs)
0530	CALL SIGN	1205	PUBLIC SERVICE ANNOUNCEMENTS (ENGLISH/IGBO)	1900	NEWS PANORAMA
0533	STATION ANNOUNCEMENT (ENGLISH/IGBO)	1215	NALU OZI GI (REQUEST)	1930	JRU UKA (FROM TUES. 1930 HRS.) (RADIO DEBATE)
0533.30	NATIONAL ANTHEM/THE PLEDGE	1300x	WORLD NEWS/EDITORIALS	2000	NE NKE GI (REQUEST)
0535	FREQUENCY ANNOUNCEMENT/PROGRAMME SUMMARY (ENGLISH/IGBO)	1315	NWOKE N'IFE (RPT. FRI. 1945 HRS) DRAMA SKETCH)	2100	WORLD NEWS/EDITORIALS (IGBO)
0545	EKPELE UTUTU (MORNING PRAYERS)	1330	ONYE NA OLU YA (INTERVIEWS WITH PERSONALITIES OF VARIOUS PROFESSIONS) (FROM WED. 1630 HRS.)	2115	AKPATI OZI (INFORMATION BOX) (FROM WED. 1715 HRS)
0555	INSTRUMENTAL MUSIC NEWS SUMMARY (ENGLISH/IGBO)	1400	PUBLIC SERVICE ANNOUNCEMENTS/NWE NDIDI (ENGLISH/IGBO)	2130	EGWU NDI AFRIKA
0600	EZI NA UNO EKENE (MUSIC PROGRAMME FOR THE FAMILY)	1415	MGBAKO UMUKA (FROM WED. 1430 HRS.) (CHILDREN'S CORNER)	2145+	TA N'UNO NZUKO ETITI (NATIONAL)
0606	STATE NEWS/COMMENTARY (IGBO)	1445	NKOWA DIBE A UNO IKUKU (RADIO DOCTOR'S TALK) (RPT. SAT. 1615 HRS.)	2200	NATIONAL NETWORK NEWS/ ANALYSIS
0615	EZI NA UNO EKENE (MUSIC PROGRAMME FOR THE FAMILY)	1500	UMUNWANYI UNU ABIAGO (REQUEST FOR WOMEN)	2220	NCHIPUTA OLU GOVT. ETITI (SPOTLIGHT ON FEDERAL PROJECTS) (IGBO) (RPT. SAT. 1130 HRS.)
0700*	NATIONAL NETWORK NEWS/ ANALYSIS			2250	OGBU OPI NA EFICHA IMI (ANNOUNCER'S CHOICE)



The Igbo playing their Instrumental Music. Tune in on Thursday at 0655hrs for melodious sounds.

FRIDAY

0530	CALL SIGN
0533	STATION ANNOUNCEMENT (ENGLISH/IGBO)
0533.30	NATIONAL ANTHEM/THE PLEDGE
0535	FREQUENCY ANNOUNCEMENT/PROGRAMME SUMMARY (ENGLISH/IGBO) EKPELE UTUTU (MORNING PRAYERS)
0545	INSTRUMENTAL MUSIC NEWS SUMMARY (ENGLISH/IGBO)
0555	0600
0600	0606
0606	0615
0615	0630
0630	0700*

RADIO NIGERIA: ENUGU

6.025 MHz (49 Meters) Short Wave
4.750 MHz (60 Meters) Short Wave

0720	SPOTLIGHT ON FEDERAL PROJECTS (ENGLISH/IGBO) (RPT. 1545 AND 1815 HRS.)	1815	SPOTLIGHT ON FEDERAL PROJECTS (ENGLISH/IGBO)	1000	LIANS AND THEIR MUSIC) NGIGWA/NWE NDI (PROG. PROG. PROMO/INTERLUDE PUBLIC SERVICE ANNOUNCEMENTS (ENGLISH/IGBO)
0730	OJI UTUTU (EARLY MORNING MUSIC PROGRAMME)	1830	EGWU ANYI (TRADITIONAL MUSIC FROM UDI/AZO-UWANI LGAs)	1010	EGWU NA SOMU UO - ANNOUNCER'S CHOICE
0800	STATE NEWS (ENGLISH)	1900	NEWS PANORAMA	1015	IFE MELU N'IZUA (RPT. SAT. SAT. 2230 HRS.) NEWS MAGAZINE PROGRAMME)
0810	EKENE ONINE ANYA (HOSPITAL REQUESTS)	1930	EGWU NMENME (ANAMBRA STATE FESTIVAL MUSIC)	1100	NEWS HIGHLIGHTS (ENGLISH/IGBO)
0900	NATIONAL NETWORK NEWS/ANALYSIS (IGBO)	1945	NWOKE N' IFE (DRAMA SKETCH) (FROM THUR. 0945 HRS.)	1110	WEKKENDE GROOVE - DCA
0920	EKENE ONINE ANYA (HOSPITAL REQUESTS)	2000	IGBO KWENU (REQUEST)	1130	NCIPUTA OLU GOV. ETITI (SPOTLIGHT ON FEDERAL PROJECTS) (FROM THUR. 2220 HRS.)
1000	OGEDIN NAKA	2100	WORLD NEWS (IGBO)	1200	NEWS SUMMARY (IGBO)
1010	PUBLIC SERVICE ANNOUNCEMENTS (ENGLISH/IGBO)	2110	NWE NDI (INGERLUDE INFORMATION BOX (TALKS) (RPT. SAT. 1945 HRS.)	1205	OKWU N'EWU (MATTERS OF THE MOMENT) (FROM FRI. 1405 HRS)
1015	ZOLIANU EGWU DISC (JOCKEYING PROGRAMME)	2115	MMIMI ILO (MUSIC) (FROM MON. 1715)	1230	OKOLO NA AGBOGHO DALULU (YOUTH MAGAZINE) (FROM FRI. 1615 HRS.)
1100	NEWS HIGHLIGHTS (ENGLISH/IGBO)	2130	TA N'UNO NZUKO ETITI (NATIONAL)	1300x	WORLD NEWS/EDITORIALS
1110	ZOLIANU EGWU DISC (JOCKEYING PROGRAMME)	2145+	NATIONAL NETWORK NEWS/ANALYSIS	1315	EGWU NA UJU YA (CATCHY RHYTHMS)
1200	NEWS SUMMARY (IGBO)	2200	INU NDI IGBO (IGBO PROVERBS WITH EXPLANATIONS) (RPT. SAT. 2220 HRS.)	1345	CHILDREN'S TIME (FROM FRI. 1745 HRS.)
1205	EGWU NDI BEANYI (MUSIC OF OUR STATE)	2220	EGWU ONWA MOONLIGHT SONGS)	1400	STATE NEWS/COMMENTARY (IGBO)
1230	NNOKO NDI IGBO (MAGAZINE PROGRAMME) (FROM WED. 1930 HRS.)	2300	AKUKO UCHICHI (LATE NIGHT NEWS)	1415	SOLUM NULIA (REQUEST PROGRAMME)
1300x	WORLD NEWS/	2300	LARU JUU (A PROGRAMME OF SOFT, LIGHT AND SWEET MUSIC)	1500	UMUAKA EKENUNO (JUNIOR REQUEST)
1310	NNI NKE OBI (MUSIC FOR YOUR DELIGHT)	2303	NEWS AT MIDNIGHT (ENGLISH/IGBO)	1545	SPOTLIGHT ON FEDERAL PROJECTS (ENGLISH/IGBO) (RPT. 2115 HRS.)
1400	NGIGWA (PROGRAMME PROMOTION)	0000	CLOSE DOWN/NATIONAL ANTHEM/THE PLEDGE	1600*	NATIONAL NETWORK NEWS
1405	OKWU NA EWU (MATTERS OF THE MOMENT) (RPT. SAT. 1205 HRS.)	0006		1615	NKOWA DIBEA UNO IKUKU (RADIO DOCTOR'S TALK) (FROM THURS. 1445 HRS.)
1430	EGWU NDI AFRIKA NALU OZIGI (REQUEST)			1630	SPORTS PAVILLION
1545	SPOTLIGHT ON FEDERAL PROJECTS (ENGLISH/IGBO) (RPT. 1815 HRS.)			1630	OMENANI (CULTURAL FEATURE) (FROM WED. 1030 HRS)
1555	NWE NDI			1900	WORLD NEWS/EDITORIALS
1600*	NATIONAL NETWORK NEWS			1915	EGWU NMENME (ANAMBRA STATE FESTIVAL MUSIC)
1615	OKOLO NA AGBOGHO DALULU (YOUTH MAGAZINE PROG.) (RPT. SAT. 2230 HRS.)			1946	INFORMATION BOX (TALKS) (FROM FRI. 2115 HRS.)
1645	UCHE UMUAKA (FROM WED. 1530 HRS.) CHILDREN'S OPINION)			2000	NATIONAL NETWORK NEWS (IGBO)
1700	STATE NEWS/COMMENTARY (IGBO)			2015	OKU ENYI NA IBE (REQUESTS)
1715	AKO N'UCHE (FROM THURS. 1715 HRS.) WISDOM OF OUR FATHERS)			2100	WORLD NEWS/EDITORIALS (IGBO)
1730	EGWU ANYI (TRADITIONAL MUSIC FROM ONITSHA LGA)			2115	SPOTLIGHT ON FEDERAL PROJECTS (ENGLISH/IGBO)
1745	CHILDREN'S TIME (RPT. SAT. 1345 HRS.)			2125	NWE NDI (INTERLUDE)
1800	NATIONAL NETWORK NEWS (IGBO)			2130	OMENKA (ARTISTE OF THE WEEK) (RPT. SUN. 1430 HRS.)

SATURDAY

0530	CALL SIGN	1630	STATION ANNOUNCEMENT (ENGLISH/IGBO)
0533	NATIONAL ANTHEM/THE PLEDGE	1630	FREQUENCY ANNOUNCEMENT/PROGRAMME SUMMARY (ENGLISH/IGBO)
0533.30	EKPELE UTUTU (MORNING PRAYERS)	1946	INSTRUMENTAL MUSIC NEWS SUMMARY (ENGLISH/IGBO)
0535	INSTRUMENTAL MUSIC NEWS SUMMARY (ENGLISH/IGBO)	2000	UNA MORNING OI (EARLY MORNING MUSIC)
0545	UNA MORNING OI (EARLY MORNING MUSIC)	2015	STATE NEWS/COMMENTARY (IGBO)
0545	STATE NEWS/COMMENTARY (IGBO)	2100	UNA MORNING OI (EARLY MORNING MUSIC)
0555	NATIONAL NETWORK NEWS/ANALYSIS	2115	UNA MORNING OI (EARLY MORNING MUSIC)
0600	SPOTLIGHT ON FEDERAL PROJECTS (ENGLISH/IGBO) (RPT. 1545 AND 2115 HRS.)	2125	UNA MORNING OI (EARLY MORNING MUSIC)
0600	UNA MORNING OI (EARLY MORNING MUSIC)	2130	NATIONAL NETWORK NEWS/ANALYSIS
0606	STATE NEWS (ENGLISH)	2200	SPOTLIGHT ON FEDERAL PROJECTS (ENGLISH/IGBO) (RPT. 1545 AND 2115 HRS.)
0615	NGAKOTA NDI INYOM (HOUSEWIVES SPECIAL, REQUESTS, TIT-BITS ETC.)	2220	UNA MORNING OI (EARLY MORNING MUSIC)
0630	NATIONAL NETWORK NEWS/ANALYSIS (IGBO)	2230	STATE NEWS (ENGLISH)
0700*	SATURDAY SPECIAL (OMINIBUS - FEATURING MUSI-	2300	NGAKOTA NDI INYOM (HOUSEWIVES SPECIAL, REQUESTS, TIT-BITS ETC.)
0720		2303	NATIONAL NETWORK NEWS/ANALYSIS (IGBO)
0730		0000	SATURDAY SPECIAL (OMINIBUS - FEATURING MUSI-
0800		0006	
0810			



RADIO NIGERIA: IBADAN

8.050 MHz (48 Meters) Short Wave
087 KHz (467 Meters) Medium Wave
575 KHz (522 Meters) Medium Wave

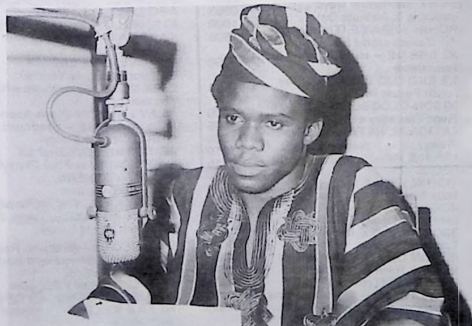
1300	WORLD NEWS - Relay	0700	NETWORK NEWS & ANALYSIS	1815	Network News in Yoruba
1310	FROM THE EDITORIALS (Relay)	0720	E JIRE O - Continued	1830	AGBA ENI O - Chartbusters
1315	SAJE NWOGBA - continued	0800	ETIE MELO - News Highlights		E NLEMBEUN O - Rept. from Sun. at 1030hrs.
1400	OYO STATE NEWS	0803	ETO TONI	1900	NEWS PANORAMA - Relay
1410	EWI - Exhortation	0808	ERE SAKARA	1930	IYANIWURA - Rept. from Thurs. at 1230hrs.
1415	LEKANSI Era Ibile (Traditional Music)	0900	ETIE MELO - News Highlights	2000	OYO STATE NEWS - English and Yoruba
1430	GBONTINU-TEHIN - From Sun. at 1730hrs. (Discussion)	0903	ERE ODUN IBILE	2020	KEREO - Public Service Announcement
1500	IROHIN AGBAYE (World News)	0930	ERE ADAMO	2030	FROM THE NATIONAL ASSEMBLY - Relay
1510	ORO OLOTU - Editorial Review	1000	ETIE MELO News Highlights	2045	SPOTLIGHT OF FED. GOVT. PROJECTS IN ENG. & YORUBA
1515	BALELAYO - Homeward Bound	1003	O SELE - Chit-chat with Music	2050	EWI ILE WA
1600	NETWORK NEWS (Relay)	1045	LATI ILE IGBIMO ASOFIN	2100	NEWS PARADE
1615	SPOTLIGHT ON FED. GOVT. PROJECTS IN ENG. & YORUBA	1100	APAO	2103	OBA LOKELE - Agricultural hints - from Thurs. at 1730
1625	E MU JOJO - chit-chat with Music	1115	IROHIN ORILE EDE WA - Network News in Yoruba	2200	NETWORK NEWS & ANALYSIS
1700	IROHIN IPINLE OYO - Oyo State News	1200	MUKULUMUKE - chit-chat with Music	2200	OJO NREBI ANA - Sweet eventido - To be compiled
1710	E MU JOJO - Continued	1206	ALAYE IROHIN	2300	IROHIN ORILE EDE WA
1730	ALAPARA - Rept. from Sun. at 1330hrs.	1206	MUKULUMUKE - continued	2315	EWI - Exhortation
1800	IROHIN ORILE EDE WA - Network News in Yoruba	1300	WORLD NEWS	2320	KA SUN RE O - To be compiled
1815	GELE O DUN - chit-chat with Music for women (Rept. Thurs. at 1930hrs.)	1315	EWI LEWI - Vox pop - Rept from Mon. at 1315hrs.	0000	ETO TOLA - Programme preview of the next day
1900	NEWS PANORAMA - Relay	1400	OYO STATE NEWS - Irohin Ipinle Oyo	0005	PLEDGE NATIONAL ANTHEM & CLOSE DOWN.
1930	AGBE ONIJE AMODUN - Rept. from Mon. at 1815hrs.	1410	EWI - Exhortation		
2000	OYO STATE NEWS - English - Yoruba	1415	DUNDUN ATI SEKERE		
2020	KEREO - Public Service Announcements	1430	AGBAJO OWO - Co-operative Half-hour		
2030	FROM THE NATIONAL ASSEMBLY (Relay)	1500	IROHIN AGBAYE - World News		
2045	SPOTLIGHT ON FED. GOVT. PROJECTS IN ENG. & YORUBA	1510	ORO OLOTU - Editorials		
2050	MO GBE DE - Highlighting New Releases	1515	BALELAYO - Homeward Bound		
2100	NEWS PARADE	1600	NETWORK NEWS - Relay		
2130	OJOGBON ORI REDIO - Brains Trust in Yoruba (Rept. Thurs at 1630hrs.)	1615	SPOTLIGHT ON FED. GOVT. PROJECTS IN ENG. & YORUBA		
2200	NETWORK NEWS & ANALYSIS	1625	ORIN RAMPE		
2220	ERE SAKARA	1630	JENGBORAN - Children's Prog. in Yoruba (Rept Fri. at 1615hrs)		
2230	BABA ALAJO - From Sun. at 1830hrs.	1545	OFIN ILE WA (Rept. from Thurs. at 1845hrs.)		
2300	IROHIN ORILE EDE WA	1700	IROHIN IPINLE OYO - Oyo State News		
2315	EWI - Exhortation	1710	BAMIJO - Highlife/Juju		
2320	KA SUN RE O - (Music to end the day)	1730	T/F SHOW (repeat Saturday at 1930)		
3000	E TO TOLA - Programme Preview for the next day	1800	IROHIN ORILE EDE WA -		
0005	PLEDGE NATIONAL ANTHEM & CLOSE DOWN				

THURSDAY

0530	NI BADAN LAW
0533	OPENING ANNOUNCEMENT
0534	NATIONAL ANTHEM & PLEDGE
0535	ETO TONI (PROGRAMME Parade)
0540	ADURA OWURO - Morning Prayers
0550	WAASI OWURO - Early morning Sermon
0600	SPOTLIGHT ON FED. GOVT. PROJECTS IN ENG. & YORUBA
0610	EJIRE O Early Morning Melodies
0630	IROHIN ORILE EDE WA

WEDNESDAY

0530	NI BADAN LAW (Station call signal)
0533	OPENING/ANNOUNCEMENT
0534	NATIONAL ANTHEM/PLEDGE
0535	ETO TONI - Programme Parade
0540	ADURA OWURO - Morning Prayers
0550	WAASI OWURO - Early Morning Sermon
0600	SPOTLIGHT ON FED. GOVT. PROJECTS IN ENG. & YORUBA
0610	EJIRE O - Early Morning melodies
0630	IROHIN ORILE EDE WA
0645	E JIRE O - Continued
0655	EWI - Exhortation



Segun Ajibesin, Announcer on duty

RADIO NIGERIA: IBADAN

8 060 MHz (49 Metres) Short Wave
887 KHz (457 Metres) Medium Wave
878 KHz (522 Metres) Medium Wave

0645	EJIRE O - Continued	1510	ORO OLOTU - Editorial review	2200	NETWORK NEWS & ANALYSIS
0655	EWI - Exhortation	1515	BALE LAYO		- Relay
0700	NETWORK NEWS & ANALYSIS	1600	NETWORK NEWS - Relay	2220	ARUGBO SOGE RI - Contd.
0720	EJIRE O - Continued	1615	SPOTLIGHT ON FED. GOVT.	2300	IROHIN ORILE EDE WA
0800	ETIE MELO - News Highlights		PROJECTS IN ENG. & YORUBA	2315	EWI - Exhortation
0803	ETO TO NI	1625	ARA NFAJO - Your health	2320	KA SUN RE O - Presents
0808	TERE TAYO - chit-chat with Music	1630	OJOGON ORI REDIO - From Tues. at 2130hrs.	0000	ETO TOLA - Programme preview
0900	ETIE MELO - News Highlights	1700	IROHIN IPINLE OYO - Oyo State News	0005	PLEDGE, NATIONAL ANTHEM
0903	TERE TAYO - Contd.		(Highlighting a new release)		close down.
0930	AGBAJOWO - Rept. from Wed. at 1430hrs.	1710	MO GBE DE		
1000	ETIE MELO	1715	ORISA ILE WA - Rept Sat. at 2115hrs.		
1002	ERE FUJI	1730	OBA 'LOKELE - From Wed. at 2130hrs.		
1045	LATI ILE IGBIMO ASOFIN APAP (Trans. of previous days report.)	1800	IROHIN ORILE EDE WA - Network News		
1100	IROHIN ORILE EDE WA (Network News in Yoruba)	1803	A O ROHUN FAYO - Request Prog. In Yoruba		
1103	O YA KA JO JO - Yoruba Request	1845	OFIN ILE WA (Nigeria Constitution) (Rept. from Wed. at 1645hrs.)		
1200	ALAYE IROHIN	1900	NEWS PANORAMA - Relay		
1205	E FI GBADUN SAYO - Compilation	1930	GELE O DUN - From Tues. at 1815hrs.		
1230	IYANIWURA - Rept. from Wed. at 1930hrs.	2000	OYO STATE NEWS IN ENG. & YORUBA		
1300	WORLD NEWS FROM THE EDITORIALS - Relay	2020	KEREO - Public Service Announcements		
1310	SAJE WOGBA - Request for Traders	2030	FROM THE NATIONAL ASSEMBLY - Relay		
1400	OYO STATE NEWS - Irohin Ipinle Oyo	2045	SPOTLIGHT ON FED. GOVT. IN ENG. & YORUBA		
1410	EWI - Exhortation	2050	EWI ILE WA - From Wed. at 2050hrs.		
1415	PANKEKE/DADAKUADA	2100	NEWS PARADE		
1430	ARUGBO-OLGGBON - from Sun. at 1630hrs.	2103	ARUGBO SOGE RI - Music of Yester years*		
1500	IROHIN AGBAIYE - Trans. World News at 1300hrs.				

FRIDAY

5030	NI BADAN LAWA
0533	OPENING ANNOUNCEMENT
0534	NATIONAL ANTHEM & PLEDGE
0535	ETO TONI
0540	ADURA OWURO - Morning Prayers
0550	ISITI JIMOH - Jumat Talk
0600	SPOTLIGHT ON FED. GOVT. PROJECTS IN ENG. & YORUBA
0610	E JIRE O - Early morning melodies
0630	IROHIN ORILE EDE WA
0645	E JIRE O - Contd.
0655	EWI - Exhortation
0700	NETWORK NEWS & ANALYSIS
0720	EJIRE O - Contd.
0800	ETIE MELO - News on the hour
0803	ETO TONI - Programme Parade
0808	BARKA JIMOH
0900	ETIE MELO - News on the hour
0903	BARKA JIMOH - Contd.
1000	ETIE MELO - NEWS ON THE HOUR
1003	ERE FUJI
1030	EWE OYE - Chieftaincy Institution (from Sun. at 1315hrs.)
1045	LATI ILE IGBIMO ASOFIN APAP - Trans. of previous report.
1100	IROHIN ORILE EDE WA
1115	OPE LO MERU - Hospital Request
1200	ALAYE IROHIN
1206	EFI IJO BE
1245	EWI ILE WA
1300	WORLD NEWS
1310	FROM THE EDITORIALS (Relay)
1315	ERE APALA
1400	OYO STATE NEWS
1410	EWI - Exhortation
1415	AWA ARAWA - Era (at Ipinle mima) (Music from other states)
1500	IROHIN AGBAIYE - Trans. of World News
1510	ORO OLOTU - Editorial review
1515	BALE LAYO
1600	NETWORK NEWS - Relay
1615	SPOTLIGHT ON FED. GOVT. PROJECTS IN ENG. & YORUBA
1625	JENGBORAN - Children's Mag. Prog. In Yoruba (From Wed. at 1615hrs.)
1640	ERE WAKA
1700	IROHIN IPINLE OYO - Oyo State News
1710	ORIN RAMPE
1715	ORIN ILE WA (From Thursday 1715hrs)



"Efi Ijo Be" on Friday at 1205hrs

RADIO NIGERIA-2 IBADAN

567 KHz (FM) Medium Wave

SUNDAY

0530	DRUM SIGNAL
0533	OPENING/ANNOUNCEMENT
0534	NATIONAL ANTHEM & PLEDGE
0535	PROGRAMME PARADE
0540	MORNING DEVOTION (1 IN 5)
0550	EARLY MORNING SERMON
0600	SONGS OF PRAISE
0630	ZONAL NEWS
0640	SUNDAY MORNING MELODIES
0700	NETWORK NEWS
0720	LET'S WORSHIP (1 IN 5)
0800	NEWS HIGHLIGHTS
0803	NEWS IN EDO
0813	NEWS IN IGALA
0823	INTERLUDE/JINGLES
0830	THE ROAD SO FAR - FROM WED. AT 2330HRS
0900	NEWS HIGHLIGHTS
0903	NEWS IN URHOBO
0913	NEWS IN YORUBA
0923	INTERLUDE/JINGLES
0930	THE WEEK AHEAD
0945	SUNDAY YOUTH FORUM
1000	NEWS HIGHLIGHTS
1003	OKHUROROWA - WOMEN MAG. PROG. IN EDO
1030	E NLE MBEUN O - MAG. PROG. IN YORUBA
1100	NEWS HIGHLIGHTS
1103	OVWIRORO - DISC. PROG. IN URHOBO
1130	DRAMA (1 IN 5)
1200	NEWS HIGHLIGHTS
1203	CARNIVAL
1300	WORLD NEWS
1310	HOSPITAL CASE - NOTES
1315	POLITICAL ROUND-UP
1330	THE LAST SEVEN DAYS
1400	NEWS HIGHLIGHTS
1403	POPULAR CLASSICS
1430	OGBON-OLOGBON - ELDERLY CITIZEN TALKING ABOUT THEIR LIFE EXPERIENCE IN YORUBA
1500	FOCUS
1530	ZONAL NEWS
1540	PUBLIC SERVICE ANNOUNCEMENTS
1545	VOICES - REPT. FROM FRI. AT 1545HRS.
1600	NETWORK NEWS
1615	NEWS IN EDO & IGALA
1635	ANNOUNCER'S CHOICE/JINGLES
1640	NEWS IN URHOBO/YORUBA
1700	NEWS HIGHLIGHTS
1703	HOSPITAL REQUEST
1730	SCHOOLS CHALLENGE
1800	NEWS HIGHLIGHTS
1803	IZAROBO - EDO REQUEST PROG.
1830	SPORTS SPECIAL
1900	AFIRCA IN THE NEWS
1915	ISLAMIC MODE OF WORSHIP
1930	VOERNMENT AT GRASS-ROOTS
2000	NATIONAL NEWS
2010	ORGAN MUSIC
2020	SUNDAY NIGHT SERVICE
2100	GIADO ZIRO DISC. PROG. IN EDO
2130	COMMUNITY HYMN SINGING
2200	NETWORK NEWS
2215	NEWS ANALYSIS
2220	IHWOWORO - URHOBO SOCIAL MUSIC

MONDAY

0530	DRUM SIGNAL
0533	OPENING ANNOUNCEMENTS
0534	NATIONAL ANTHEM & PLEDGE
0635	PROGRAMME PARADE
0540	MORNING DEVOTION (1 IN 5)
0550	READING FROM THE HOLY QURAN
0600	ATOTO ARERE
0605	SOUNDS AT SUNRISE PART I
0630	ZONAL NEWS
0640	SOUNDS AT SUNRISE CONTINUED
0655	EXHORTATION IN GLISH
0700	NETWORK NEWS
0715	NEWS ANALYSIS
0725	PUBLIC SERVICE ANNOUNCEMENTS
0730	SOUNDS AT SUNRISE PART II
0800	NEWS HIGHLIGHTS
0803	NEWS IN EDO
0813	NEWS IN IGALA
0825	EKHARHA - EXHORTATION IN EDO
0830	JURHI - URHOBO SOCIAL MUSIC
0845	NOLEZOMO - EDO SOCIAL MUSIC
0900	NEWS HIGHLIGHTS
0903	NEWS IN URHOBO
0913	NEWS IN YORUBA
0925	NYOHWARE - EXHORTATION IN URHOBO
0930	MO YO FUN O - REQUEST PROG. IN YORUBA
1000	NEWS HIGHLIGHTS
1003	EGHWEYA-WADO - WOMEN'S MAG. PROG. IN URHOBO
1030	OUR CULTURAL HERITAGE (1 IN 5)
1045	ONAWAGBON - XRAY ON EDO MUSIC
1100	NEWS HIGHLIGHTS
1103	FROM THE EDITORIALS
1108	FROM THE EDITORIALS IN EDO/IGALA
1118	AGO ONILE O - CHIT-CHAT WITH MUSIC IN YORUBA
1145	A'AGHODARO - FOCUS ON DEVELOPMENT IN EDO
1200	NEWS HIGHLIGHTS
1203	ANNOUNCER'S CHOICE
1215	ITIE-EDOHIA - MAG. PROG IN EDO
1245	UNYONGBA - FOCUS ON DEVELOPMENT IN IGALA
1300	WORLD NEWS
1310	NEWS COMMENTARY
1315	FROM THE EDITORIALS IN URHOBO/YORUBA
1325	OLA-UKO - EXHORTATION IN IGALA
1330	SPOTLIGHT
1400	NEWS HIGHLIGHTS
1403	MELODY TIME
1430	OGBON OLOGBON
1500	NEWS HIGHLIGHTS
1503	NEWS COMMENTARY IN EDO/IGALA

1513	HOMEWARD BOUND
1530	ZONAL NEWS
1540	NEWS COMMENTARY IN URHOBO
1600	NETWORK NEWS
1615	FROM THE EDITORIALS
1620	NEWS IN EDO/IGALA
1640	OMPHARE-KPONGA - CHILDREN'S PROG. IN URHOBO
1655	NEWS COMMENTARY IN YORUBA
1700	NEWS HIGHLIGHTS
1703	AGBAJO OWO - CO-OPERATIVE HALF HOUR
1730	NEWS IN URHOBO
1740	NEWS IN YORUBA
1750	ELI-AGALE - IGALA SOCIAL MUSIC
1800	NEWS HIGHLIGHTS
1803	AGBE ONJE AMODUN
1830	ITAN - PROVERBS IN IGALA
1845	VOICE OF ISLAM (1 IN 5)
1900	NEWS PARADE
1930	FEMINE FAIR - WOMEN'S MAG. PROG. IN ENGLISH (REPT. FROM SAT. AT 1130HRS)
2000	NATIONAL NEWS
2010	FROM THE LEGISLATURE
2030	NEWS SUMMARY IN EDO/IGALA
2040	TOMORROW ON FRNC/PUBLIC SERVICE ANNOUNCEMENT
2045	OSHERE - FOR FARMERS IN URHOBO
2100	NEWS SUMMARY IN URHOBO/YORUBA
2100	MUSIC SERMON
2120	EVENING WORSHIP (1 IN 5)
2130	EHARA-VWODIOTO - MAT. PROG. IN URHOBO
2200	NETWORK NEWS
2215	NEWS ANALYSIS
2200	NETWORK NEWS
2215	NEWS ANALYSIS
2220	MUSIC OF OUR ZONE
2230	EKO ABOGIJO - ELDERLY CITIZEN TALKING ABOUT THEIR LIFE EXPERIENCE
2300	NEWS HIGHLIGHTS
2303	EXHORTATION IN ENGLISH
2308	NIGHT CAP
0000	NEWS ROUND-UP

RADIO Nigeria, Ibadan Zone started from 1 May 1981 to relay its programmes on two different channels - Radio 1 and Radio - 2.

Radio 1 is transmitted on Short-wave frequency and broadcasts in five different languages. These are Edo, Urhobo, Yoruba, Igala and English.

Radio - 2 transmits on the medium wave frequency in Yoruba and English. It is intended mainly for listeners in Ibadan and its environ.

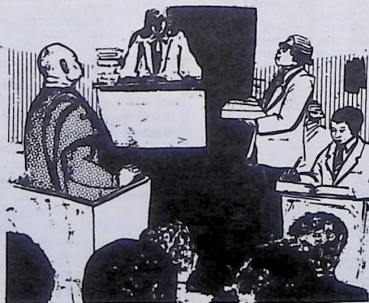
To help our readers tune to the appropriate frequencies on which these stations operate, we publish elsewhere two types of schedules meant for each of the channels.

RADIO NIGERIA-2 IBADAN

0003	LET'S PRAY	1108	FROM EDITORIALS IN EDO & IGALA	1803	OMOPHARE-KPONOJE - CHILDREN'S PROG. IN URHOBO (REPT. FROM MON. AT 1640HRS.)
0008	PLEDGE, NATIONAL ANTHEM AND CLOSE DOWN.	1118	OVWIRORO - DISC. PROG. IN URHOBO (REPT. FROM SUN. AT 1103HRS)	1818	REQUEST TIME
TUESDAY					
0530	DRUM SIGNAL	1200	NEWS HIGHLIGHTS	1845	CHIEFTANCY (1 :N 5)
0533	OPENING ANNOUNCEMENT	1203	E KU ORO AJE	1900	NEWS PARADE
0534	NATIONAL ANTHEM & PLEDGE	1230	FORUM	1930	UKHUOROWA - WOMEN'S MAG. PROG. IN EDO (REPT. FROM SUN. AT 1003HRS)
0535	PROGRAMME PARADE	1300	WORLD NEWS	2000	NATIONAL NEWS
0540	MORNING DEVOTION (1 IN 5)	1310	NEWS COMMENTARY	2010	FROM THE LEGISLATURE
0550	EARLY MORNING SERMON (1 IN 5)	1315	FROM THE EDITORIALS IN URHOBO/YORUBA	2030	NEWS SUMMARY IN EDO/IGALA
0600	ATOTO ARERE	1325	OLA-UKO EXHORTATION IN IGALA	2040	TOMORROW ON FRCN/PUBLIC SERVICE ANNOUNCEMENT
0605	SOUNDS AT SUNRISE PART I	1330	UMENWAEN - ELDERLY PEOPLE TALKING ABOUT THEIR LIFE EXPERIENCE IN EDO.	2045	OBEVBARU-UGBUGBO - FOR FARMERS IN EDO
0630	ZONAL NEWS	1400	NEWS HIGHLIGHTS	2100	NEWS SUMMARY IN URHOBO/YORUBA
0640	SOUNDS AT SUNRISE CONTINUED	1403	ELI-UGWORO - SOCIAL MUSIC IN IGALA	2110	READING FROM THE HOLY QURAN (1 IN 5)
0655	EXHORTATION IN ENGLISH	1403	MUSIC IN IGALA	2120	EVENING WORSHIP (1 IN 5)
0700	NETWORK NEWS	1415	FROM THE LEGISLATURE IN URHOBO/YORUBA	2130	UKOLA-OJOJII-OJOJII - MAG. PROG. IN IGALA
0715	NEWS ANALYSOS	1445	MUSIC WHILE YOU WORK	2200	NETWORK NEWS
0720	ATOTO ARERE	1500	NEWS HIGHLIGHTS	2215	NEWS ANALYSIS
0725	PUBLIC ANNOUNCEMENT/JINGLES	1503	NEWS COMMENTARY IN EDO/IGALA	2220	OKHA - STORY TELLING IN EDO
0730	SOUNDS AT SUNRISE PART II	1513	HOMEWARD SOUND	2230	OBALOKELE
0800	NEWS HIGHLIGHTS	1530	ZONAL NEWS	2303	NEWS HIGHLIGHTS
0803	NEWS IN EDO	1540	NEWS COMMENTARY	2303	EXHORTATION IN ENGLISH
0813	NEWS IN IGALA	1545	CANDID THEATRE	2308	NIGHT CAP
0825	EKHAFAHA - EXHORTATION IN EDO	1600	NETWORK NEWS	0000	NEWS ROUND-UP
0830	IYACHI-ODUDU - CHIT-CHAT WITH MUSIC IN IGALA	1615	FROM THE EDITORIALS	0003	LET'S PRAY
0900	NEWS HIGHLIGHTS	1620	NEWS IN EDO	0008	PLEDGE, NATIONAL ANTHEM & CLOSE DOWN.
0903	NEWS IN URHOBO	1630	NEWS IN IGALA		
0913	NEWS IN YORUBA	1640	IKUEKHAE - CHILDREN'S PROG. IN EDO		
0923	INTERLUDE/JINGLES	1655	NEWS COMMENTARY IN YORUBA		
0925	NYOHWARE - EXHORTATION IN URHOBO	1700	NEWS HIGHLIGHTS		
0930	EHARUYERE - LISTENER'S CHOICE IN URHOBO	1703	OSIA - STORY TELLING IN URHOBO		
1000	NEWS HIGHLIGHTS	1715	VOICE OF YOUTH		
1003	APALA/SAKARA	1730	NEWS IN URHOBO		
1015	FROM THE LEGISLATURE IN EDO & IGALA	1740	NEWS IN YORUBA		
1045	ERUPHIA - FOCUS ON DEVELOPMENT IN URHOBO	1750	YOU AND THE LAW		
1100	NEWS HIGHLIGHTS	1800	NEWS HIGHLIGHTS		
1103	FROM THE EDITORIALS				

WEDNESDAY

0530	DRUM SIGNAL
0533	OPENING ANNOUNCEMENT
0534	NATIONAL ANTHEM & PLEDGE
0535	PROGRAMME PARADE
0540	MORNING DEVOTION (1 IN 5)
0550	EARLY MORNING SERMON (1 IN 5)
0600	ATOTO ARERE
0605	PEOPLE TO PEOPLE PART I
0630	ZONAL NEWS
0640	PEOPLE TO PEOPLE - CONTINUED
0655	EXHORTATION IN ENGLISH
0700	NETWORK NEWS
0715	NEWS ANALYSIS
0720	ATOTO ARERE
0725	PUBLIC SERVICE ANNOUNCEMENT
0730	PEOPLE TO PEOPLE PART II
0800	NEWS HIGHLIGHTS
0803	NEWS IN EDO
0813	NEWS IN IGALA
0823	INTERLUDE/JINGLES
0825	EKHARHA - EXHORTATION IN EDO
0830	OWURO L'AWA - CHIT-CHAT WITH MUSIC IN YORUBA
0900	NEWS HIGHLIGHTS
0903	NEWS IN URHOBO
0913	NEWS IN YORUBA
0923	INTERLUDE/JINGLES
0925	NYOHWARE - EXHORTATION IN URHOBO



"You And The Law" every Tuesday at #1750hrs

RADIO NIGERIA-2 IBADAN

0930	IYA-OKO - LISTENER'S CHOICE IN IGALA
1000	NEWS HIGHLIGHTS
1015	FROM THE LEGISLATURE IN EDO/IGALA
1045	ERUPHIA - FOCUS ON DEVELOPMENT IN URHOBO
1100	NEWS HIGHLIGHTS
1103	FROM THE EDITORIALS
1108	FROM THE EDITORIALS IN EDO/IGALA
1118	ISE - PROVERBS IN URHOBO
1130	DEAR SIR
1140	INTERLUDE
1145	UNYONGBA - FOCUS ON DEVELOPMENT IN IGALA (FROM MON. AT 1245HRS.)
1200	NEWS HIGHLIGHTS
1203	IYANEWA - IGALA SOCIAL MUSIC
1215	MUSIC OF OUR LAND (1 IN 5)
1230	GIADO-ZIRO - REPT. FROM SUN. AT 2100HRS.
1300	WORLD NEWS
1310	NEWS COMMENTARY
1315	FROM THE EDITORIALS IN URHOBO/YORUBA
1325	OLAJUKO - EXHORTATION IN IGALA
1330	T/F SHOW - REPT FROM SAT. AT 2030HRS.
1400	NEWS HIGHLIGHTS
1403	OLOKUN MUSIC
1415	FROM THE LEGISLATURE
1445	FESTIVAL MUSIC (1 IN 5)
1500	NEWS HIGHLIGHTS
1503	NEWS COMMENTARY IN EDO/IGALA
1513	BAND OF THE WEEK
1530	ZONAL NEWS
1540	NEWS COMMENTARY IN URHOBO
1545	OUR CULTURAL HERITAGE (1 IN 5) (REPT. FROM MON. AT 1030HRS)
1600	NETWORK NEWS
1615	FROM THE EDITORIALS
1620	NEWS IN EDO
1630	NEWS IN IGALA
1640	JENGBORAN - CHILDREN'S PROG. IN YORUBA
1655	NEWS COMMENTARY IN YORUBA
1700	NEWS HIGHLIGHTS
1703	OBEBBARU-OGBUGBO - FOR FARMERS IN EDO (REPT. FROM TUE. AT 2045HRS.)
1718	INTERLUDE/JINGLES
1725	HOSPITAL CASENOTES
1730	NEWS IN URHOBO
1740	NEWS IN YORUBA
1750	IDJEDJE - IUEWTIONS & ANSWERS IN URHOBO
1800	NEWS HIGHLIGHTS
1803	UZEBU - EDO SOCIAL MUSIC
1815	OUR DEITIES (1 IN 5)
1930	FORUM - PROG. IN WHICH TOP GOVT. FUNCTIONARIES PROJECT FED. GOVT. ACTIVITIES.
1900	NEWS PARADE
1930	IYANIWURA - WOMEN MAG. PROG. IN YORUBA
2000	NATIONAL NEWS
2010	FROM THE LEGISLATURE
2030	NEWS SUMMARY IN EDO/IGALA

2040	TOMORROW ON FRNC/PUBLIC SERVICE ANNOUNCEMENT
2045	UKOLA AMELUCHE - FOR FARMERS IN IGALA
2100	NEWS SUMMARY IN URHOBO/YORUBA
2110	READING FROM THE HOLY QURAN (1 IN 5)
2120	EVENING WORSHIP
2130	E NLE MBEUN O
2140	NETWORK NEWS
2215	NEWS ANALYSIS
2220	MUSIC OF OUR ZONE
2230	THE ROAD SO FAR - REPT FROM SUN. AT 0830HRS
2300	NEWS HIGHLIGHTS
2303	EXHORTATION IN ENGLISH
2308	NIGHT CAP
0000	NEWS ROUND UP
0003	LET'S PRAY
0008	PLEDGE, NATIONAL ANTHEM & CLOSE DOWN.

THURSDAY

0530	DRUM SIGNAL
0533	OPENING ANNOUNCEMENT
0534	NATIONAL ANTHEM & PLEDGE
0535	PROGRAMME PARADE
0540	MORNING DEVOTION (1 IN 5)
0550	READING FROM THE HOLY QURAN (1 IN 5)
0600	ATOTO ARERE
0605	SOUNDS AT SUNRISE PART I
0630	ZONAL NEWS
0640	SOUNDS AT SUNRISE CONTINUED
0655	EXHORTATION IN ENGLISH
0700	NETWORK NEWS
0715	NEWS ANALYSIS

0720	ATOTO ARERE
0725	PUBLIC SERVICE ANNOUNCEMENT
0730	SOUNDS AT SUNRISE PART II
0800	NEWS HIGHLIGHTS
0803	NEWS IN EDO
0813	NEWS IN IGALA
0823	INTERLUDE/JINGLES
0825	EKHARHA - EXHORTATION IN EDO
0830	OKIHERE - CHIT-CHAT WITH MUSIC IN URHOBO
0900	NEWS HIGHLIGHTS
0903	NEWS IN URHOBO
0913	NEWS IN YORUBA
0923	INTERLUDE/JINGLES
0925	NYOHWARE - EXHOB TATION IN URHOBO
0930	IGIOTUE - LISTENER'S CHOICE IN EDO
1000	NEWS HIGHLIGHTS
1003	INTERLUDE
1015	NEWS HIGHLIGHTS
1045	OGHERE - FOR FARMERS IN URHOBO (REPT. FROM MON. AT 2045HRS.)
1100	NEWS HIGHLIGHTS
1103	FROM THE EDITORIALS
1108	FROM THE EDITORIALS IN EDO/IGALA
1118	UKOLA ABOBULE - WOMEN'S MAG. PROG. IN IGALA
1145	ITESIWAJU - FOCUS ON DEVELOPMENT IN YORUBA
1200	NEWS HIGHLIGHTS
1203	EWUWU - URHOBO REQUEST PROGRAMME
1230	IYANIWURA - WOMEN'S MAG. PROG. IN YORUBA
1300	WORLD NEWS



These two children are playing the popular "Ayo" game. "Jengboran" on Wed at 1640hrs.

RADIO NIGERIA - 2 IBADAN

1310	NEWS COMMENTARY	2000	NATIONAL NEWS	0725	PUBLIC SERVICE ANNOUNCEMENT
1315	FROM THE EDITORIALS IN URHOB0/YORUBA	2010	FROM THE LEGISLATURE	0730	SOUNDS AT SUNRISE PART II
1325	OLA-UKO - EXHORTATION IN IGALA	2030	NEWS SUMMARY IN EDO/IGALA	0800	NEWS HIGHLIGHTS
1330	UKOLA OJOJI-OJOJI - REPT. FORM TUES AT 2130HRS.	2040	TOMORROW ON FRCN/PUBLIC SERVICE ANNOUNCEMENT FOR FARMER IN ENGLISH	0803	NEWS IN EDO
1400	NEWS HIGHLIGHTS	2045	NEWS SUMMARY IN EDO/IGALA	0813	NEWS IN IGALA
1403	MUSIC WHILE YOU WORK	2100	ISLAMI AND YOU	0823	INTERLUDE/JIGLES
1415	FROM THE LEGISLATURE IN URHOB0/YORUBA	2110	EVENING WORSHIP (1 IN 5)	0825	EKHARHA - EXHORTATION IN EDO
1445	ERE IGBALODE	2120	ITIE-EDOHIA - MAG. PROG. IN EDO (REPT. FROM MON. AT 1215HRS)	0830	FOR YOU AT HOME
1500	NEWS HIGHLIGHTS	2130	NETWORK NEWS	0900	NEWS HIGHLIGHTS
1503	NEWS COMMENTARY IN EDO/IGALA	2200	NEWS ANALYSIS	0903	NEWS IN URHOB0
1513	HOMEWARD BOUND	2215	YOU AND THE LAW	0913	NEWS IN YORUBA
1530	ZONAL NEWS	2220	OGBON-OLOGBON (REPT. FROM SUN. AT 1430HRS.)	0915	N YOHWARE - EXHORTATION IN URHOB0
1540	NEWS COMMENTARY IN URHOB0	2230	NEWS HIGHLIGHTS	0930	UKOLA ABOBULE (REPT. FROM THURS. AT 1118HRS)
1545	JENGBORAN - REPT. FROM WED. AT 1640HRS.	2300	EXHORTATION IN ENGLISH	1000	NEWS HIGHLIGHTS
1600	NETWORK NEWS	2303	NIGHT CAP	1003	JUUJ/WAKA
1615	FROM THE EDITORIALS	2308	NEWS ROUND-UP	1015	FROM THE LEGISLATURE IN EDO/IGALA
1620	NEWS IN EDO	0000	LET'S PRAY	1045	CHIEFTAINCY - REPT. FROM TUES. AT 1845HRS.
1630	NEWS IN IGALA	0008	EDGE, NATIONAL ANTHEM	1103	FROM THE EDITORIALS
1640	IKO ABIMOTO - CHILDREN'S PROG. IN IGALA		CLOSE DOWN.	1118	UWA KOBIRUO - CHIT-CHAT WITH MARKET WOMEN IN URHOB0
1655	NEWS COMMENTARY IN YORUBA			1145	PROGRESS REPORT IN ENGLISH
1700	NEWS HIGHLIGHTS	FRIDAY		1200	NEWS HIGHLIGHTS
1703	OLUKA - DISC. PROG. IN IGALA	0530	DRUM SIGNAL	1203	OBEDI - CHIT-CHAT WITH MARKET WOMEN IN EDO
1730	NEWS IN URHOB0	0533	OPENING ANNOUNCEMENT	1230	PRELUDE TO JUMAT SERVICE
1740	NEWS IN YORUBA	0534	NATIONAL ANTHEM & PLEDGE	1253	2ND CALL TO PRAYERS
1750	UKE-EDO SOCIAL MUSIC			1302	JUMAT SERVICE
1800	NEWS HIGHLIGHTS	0535	PROGRAMME PARADE	1330	WORLD NEWS
1803	ANNOUNCER'S CHOICE	0540	MORNING DEVOTION (1 IN 5)	1340	NEWS COMMENTARY
1815	UKOLA AMELUCHE - FOR FARMERS IN IGALA (REPT. FROM WED. AT 2045HRS)	0550	JUMAT TALK	1345	FROM THE EDITORIALS IN URHOB0/YORUBA
		0600	ATOTO ARERE	1355	OLA-UKO - EXHORTATION IN IGALA
1830	CANDID THEATRE	0605	SOUNDS AT SUNRISE PART I	1400	NEWS HIGHLIGHTS
1845	MEDITATION	0630	ZONAL NEWS	1403	INTERLUDE
1900	NEWS PARADE	0640	SOUNDS AT SUNRISE - CONTINUED	1405	DEAR SIR
1930	ECHWAYA-WADO - WOMEN'S MAG. PROG. IN URHOB0 (REPT. FROM MON. AT 1003HRS.)	0655	EXHORTATION IN ENGLISH	1415	FROM THE LEGISLATURE
		0700	NETWORK NEWS	1445	EHWEVWREHERE - MUSIC PARADE IN URHOB0
		0715	NEWS ANALYSIS	1500	NEWS HIGHLIGHTS
		0720	ATOTO ARERE	1503	NEWS COMMENTARY IN EDO/IGALA
				1513	INTERLUDE
				1513	MUSIC OF OUR LAND - REPT FROM WED. AT 1215HRS.)
				1530	ZONAL NEWS
				1540	NEWS COMMENTARY IN URHOB0
				1545	VES
				1600	NETWORK NEWS
				1615	FROM THE EDITORIALS
				1620	NEWS IN EDO
				1630	NEWS IN IGALA
				1640	IKUEKHAH - CHILDREN'S PROG. IN EDO
				1655	NEWS COMMENTARY IN YORUBA
				1700	NEWS HIGHLIGHTS
				1703	ALAGHODARO - FOCUS ON DEVELOPMENT IN EDO
				1718	ANNOUNCER'S CHOICE
				1730	NEWS IN URHOB0
				1740	NEWS IN YORUBA
				1760	THE WAY I SEE IT
				1800	NEWS HIGHLIGHTS
				1803	ITAN - PROVERBS IN EDO
				1815	AGBE ONIJE AMODUN
				1845	CHRISTIAN COMMENT
				1800	NEWS PARADE
				1930	UGWA ALU - REQUEST PROG. IN IGALA



"Jumat Service" on Friday at 1302hrs

RADIO NIGERIA -2 IBADAN

2000	NATIONAL NEWS	0715	NEWS ANALYSIS	1330	THE BIG BEAT
2010	FROM THE LEGISLATURE	0720	ATOTO ARERE	1400	NEWS HIGHLIGHTS
2030	NEWS SUMMARY IN EDO/ IGALA	0725	KARA OLE	1403	NEWS COMMENTARY IN EDO/IGALA
2040	TOMORROW ON FRCN/PUBLIC SERVICE ANNOUNCEMENT	0800	NEWS HIGHLIGHTS	1413	INTERLUDE//JINGLES
2045	VOICE OF ISLAM (1 IN 5)	0803	NEWS IN EDO	1420	NEWS COMMENTARY IN URHOBO/YORUBA
2100	NEWS SUMMARY IN URHOBO/ YORUBA	0813	NEWS IN IGALA	1430	DRAMA (1 IN 5)
2110	EVENING WORSHIP (1 IN 5)	0823	INTERLUDE/JINGLES	1500	ZONAL NEWS
2120	PIANO MUSIC	0825	EKHARHA - EXHORTATION IN EDO	1510	NEWS IN EDO
2130	OJOGRON ORI REDIO	0900	OWIEADOLO - CHIT-CHAT WITH MUSIC IN EDO	1520	NEWS IN IGALA
2200	NETWORK NEWS	0903	NEWS HIGHLIGHTS	1530	UDJE MUSIC - URHOBO
2215	NEWS ANALYSIS	0913	NEWS IN URHOBO	1550	SOCIAL MUSIC
2220	MUSIC OF OUR ZONE	0913	NEWS IN YORUBA	1540	NEWS IN URHOBO
2230	UKRAKPO - ELDERLY PEOP- LE TALKING ABOUT THEIR LIFE EXPERIENCE IN URHOBO	0925	NYOHWARE - EXHORTATION IN URHOBO	1550	NEWS IN YORUBA
2300	NEWS HIGHLIGHTS	0930	HOW GO DE GO - REQUEST PROG. IN PIGIN ENG.	1600	NETWORK NEWS
2303	MIXED MUSIC	1000	NEWS HIGHLIGHTS	1615	FROM THE EDITORIALS
2320	JUMAT SERMON	1003	OLELE - IGALA SOCIAL MUSIC	1620	UGBA MUSIC - TRADITIONAL MUSIC IN EDO
2350	AL-AISH - TODAY'S SPIRI- TUAL DIET	1015	FROM THE LEGISLATURE IN EDO/IGALA	1845	SPORTS PAVILLION FESTIVAL MUSIC (1 IN 5) (REPT. FROM WED. AT 1445HRS.)
0000	NEWS ROUND UP	1045	VOICE OF YOUTH - DISC. PROG. IN ENGLISH (REPT. FROM TUES. AT 1715HRS.)	1900	FOCUS
0003	PLEDGE, NATIONAL ANTHEM & CLOSE DOWN.	1100	NEWS HIGHLIGHTS	1930	OBALOKELE
		1103	FROM THE EDITORIALS	2000	NATIONAL NEWS
		1108	FROM THE EDITORIALS IN EDO/IGALA.	2110	NEWS COMMENTARY
		1118	SPORTS IN THE NEWS	2015	POLITICAL ROUND-UP
		1130	FEMININE FAIR - WOMEN'S MAG. PROG. (REPT. FROM MON. AT 1930HRS.)	2030	T. F. SHOW - REPT. FROM WED. AT 1330HRS.
0530	DRUM SIGNAL	1200	NEWS HIGHLIGHTS	2100	NEWS HIGHLIGHTS
0533	OPENING ANNOUNCEMENT	1203	INE OKE NA - MODERN MUSIC IN URHOBO	2105	MUSLIM SERMON (1 IN 5)
0534	NATIONAL ANTHEM & PLEDGE	1215	FROM THE LEGISLATURE IN URHOBO & YORUBA	2120	EVENING WORSHIP
0535	PROGRAMME PARADE (1 IN 5)	1245	OUR DAITIES - (1 IN 5) (REPT. FROM WED. AT 1815HRS.)	2130	UKRAKPO - FROM FRI. AT 2230HRS.
0540	MORNING DEVOTION (1 IN 5)	1300	WORLD NEWS	2200	NETWORK NEWS
0550	EARLY MORNING SERMON (1 IN 5)	1310	NEWS COMMENTARY	2215	NEWS ANALYSIS
0600	ATOTO ARERE	1315	FROM THE EDITORIALS IN URHOBO/YORUBA	2220	ALO MI ALO
0605	SOUNDS AT SUNRISE PART I	1325	OLA-UKO - EXHORTATION IN IGALA	2230	UMENWAEN - REPT. FROM TUES. AT 1330HRS.
0630	ZONAL NEWS			2300	NEWS HIGHLIGHTS
0640	SOUNDS AT SUNRISE - CONTINUED			2303	EXHORTATION IN ENGLISH
0655	EXHORTATION IN ENGLISH			2308	F. R. C. N. NIGHT OUT/ MUKULUMUKE
0700	NETWORK NEWS			0000	NEWS ROUND-UP
				0003	LET'S PRAY
				0008	PLEDGE, NATIONAL ANTHEM & CLOSE DOWN.

SATURDAY



It could be Wrestling on "Sports In The News" on Sat at
1118hrs.

SUNDAY

0530 DRUM SIGNAL
 0533 OPENING
 0534 NATIONAL ANTHEM AND PLEDGE
 0535 ATAARO SULE (PROGRAMME PARADE IN YORUBA)
 0540 K'A JOSIN
 0545 AKIBAR
 0550 KI NI NNKAN? (YORUBA PHILO-SOPHY)
 0555 REKOODU KAN (RECORD FILL-UP)
 0600 ASUNLOLA O (PART I)
 0630 IROYIN KUTUHA! (NEWS AT DAWN IN YORUBA)
 0635 ASUNLOLA O (PART II)
 0700 NATIONAL NETWORK NEWS (RE-LAY)
 0715 NEWS ANALYSIS (RELAY)
 0720 OSE RERE
 0800 IROYIN DE' LE-D'OKO (NETWORK NEWS IN YORUBA)
 0810 ORO ARUNKUNNA (NEWS ANALYSIS IN YORUBA)
 0815 E SELENKEJO
 1000 WORLD NEWS (RELAY)
 1010 OSE DUN (PART I)
 1100 IROYIN DE'LE-DO'OKO (WORLD NEWS IN YORUBA)
 1110 HOGBE (EGUN NEWS TRANSLATION)
 1120 OSE DUN (PART II)
 1205 TETILEKO (PUBLIC SERVICE ANNOUNCEMENTS IN YORUBA)
 1205 ERE JUJU
 1300 WORLD NEWS (RELAY)
 1310 EDITORIALS (RELAY)
 1315 IROYIN DE' LE-D'OKO (WORLD NEWS IN YORUBA)
 1325 E MU NOMBA (PART I)
 1400 AGBON BI BIO (EGUN REQUESTS)
 1430 E MU NOMBA (PART III)
 1600 NATIONAL NETWORK NEWS (RE-LAY)
 1610 FUJI REPETE
 1700 IROYIN DE' LE-D'OKO (NETWORK NEWS IN YORUBA)
 1710 ORO ARUNKUNNA (NEWS ANALYSIS IN YORUBA)
 1715 HOGBE (EGUN NEWS)
 1725 AWO TO 'L ODE (NEW RECORDS SHOW)
 1800 A RI'WE YIN (YORUBA REQUESTS)
 1900 WORLD NEWS (RELAY)
 1910 NEWS ANALYSIS (RELAY)
 1915 ORIN AWO ELESIN KRISTI
 2010 TETILEKO (PUBLIC SERVICE ANNOUNCEMENTS IN YORUBA)
 2015 KI NI NNKAN? (YORUBA PHILO-SOPHY)
 2020 E KU ISINMI (PART I)
 2100 ITAN ALE
 2110 E KU ISINMI (PART III)
 2200 NATIONAL NETWORK NEWS (RE-LAY)
 2215 A R E M O T E
 0000 (LE OLA MO TAN (PROGRAMME PREVIEW FOR THE NEXT DAY)
 0005 PLEDGE, NATIONAL ANTHEM AND CLOSE DOWN.

MONDAY

0530 DRUM SIGNAL
 0533 OPENING

0534 NATIONAL ANTHEM AND PLEDGE
 0535 ATAARO SULE (PROGRAMME PARADE IN YORUBA)
 0540 K'A JOSIN
 0545 AKIBAR
 0550 KI NI NNKAN? (YORUBA PHILO-SOPHY)
 0555 REKOODU KAN, (RECORD FILL-UP)
 0600 B'O'O JI O JI MI (PART I)
 0630 IROYIN KUTUHA! (NEWS AT DAWN IN YORUBA)
 0635 B'O'O JI O JI MI (PART II)
 0700 NATIONAL NETWORK NEWS (RELAY)
 0715 NEWS ANALYSIS (RELAY)
 0720 ONA RE O
 0800 IROYIN DE' LE-D'OKO (NETWORK NEWS IN YORUBA)
 0810 ORO ARUNKUNNA (NEWS ANALYSIS IN YORUBA)
 0815 AMUSEYA
 1000 WORLD NEWS (RELAY)
 1015 EDITORIALS (RELAY)
 1020 OJISE (PART I) (REQUESTS IN YORUBA).
 1100 IROYIN DE'LE D'OKO (WORLD NEWS IN YORUBA)
 1110 HOGBE (NEWS IN EGUN)
 1120 OJISE (PART II)
 1200 TETILEKO (PUBLIC SERVICE ANNOUNCEMENTS IN YORUBA)
 1205 AJEPE AYE
 1300 WORLD NEWS (RELAY)
 1310 EDITORIALS (RELAY)
 1315 IROYIN DE' LE D'OKO (WORLD NEWS IN YORUBA)
 1325 KULUSO (PART I)
 1400 MIJAYA (EGUN MUSIC)
 1430 KULUSO (PART II)
 1600 NATIONAL NETWORK NEWS (RE-LAY)
 1610 ERE A-LA ATI SAKARA
 1700 IROYIN DE'LE D'OKO
 1710 ORO ARUNKUNNA (NEWS ANALYSIS IN YORUBA)
 1715 HOGBE (NEWS IN EGUN)
 1725 FAAJI FAMILA (PART II)
 1800 LAGOS STATE NEWS)
 1810 FAAJI GAMILA (PART II)
 1900 NEWS PANORAMA (RELAY)
 1930 ALE TUN LE (PART I)
 2000 IROYIN IPINLE EKO (LAGOS STATE NEWS IN YORUBA)
 2010 TETILEKO (PUBLIC SERVICE ANNOUNCEMENTS IN YORUBA)
 2015 KI NI NNKAN? (YORUBA PHILO-SOPHY)
 2020 ALE TUN LE (PART II)
 2100 ARAMADURO (SPOTLIGHT)
 2105 ERE JUJU
 2200 NATIONAL NETWORK NEWS (RE-LAY)
 2220 A R E M O T E (PART I)
 2300 AKITIYAN IGBIMO ASOFIN (FROM THE NATIONAL ASSEMBLY IN YORUBA)
 2315 A R E M O T E (PART II)
 0000 (LE OLA MO TAN (PROGRAMMES PREVIEW FOR NEXT DAY)
 0005 PLEDGE, NATIONAL ANTHEM AND CLOSE DOWN

TUESDAY

0530 DRUM SIGNAL
 0533 OPENING
 0534 NATIONAL ANTHEM AND PLEDGE
 0535 ATAARO SULE (PROGRAMME PARADE IN YORUBA)
 0540 K'A JOSIN
 0545 AKIBAR
 0550 KI NI NNKAN? (YORUBA PHILO-SOPHY)
 0555 REKOODU KAN (RECORD FILL-UP)
 0600 B'O'O JI O JI MI (PART I)
 0630 IROYIN KUTUHA! (NEWS AT DAWN IN YORUBA)
 0635 B'O'O JI O JI MI (PART II)
 0700 NATIONAL NETWORK NEWS (RE-LAY)
 0715 NEWS ANALYSIS (RELAY)
 0720 ONA RE O
 0800 IROYIN DE'LE D'OKO (NETWORK NEWS IN YORUBA)
 0810 ORO ARUNKUNNA (NEWS ANALYSIS IN YORUBA)
 0815 AMUSEYA
 1000 WORLD NEWS (RELAY)
 1010 EDITORIALS (RELAY)
 1015 E MU GEGE (PART I) (YORUBA REQUESTS)
 1100 IROYIN DE' LE D'OKO (WORLD NEWS IN YORUBA)
 1110 HOGBE (EGUN NEWS)
 1120 E MU GEGE (PART II)
 1200 TETILEKO (PUBLIC SERVICE ANNOUNCEMENTS IN YORUBA)
 1205 ERE JUJU
 1300 WORLD NEWS (RELAY)
 1310 EDITORIALS (RELAY)
 1315 IROYIN DE'LE D'OKO (WORLD NEWS IN YORUBA)
 1325 E TURAKA (PART I)
 1400 MI WA MI NI DUWE (EGUN REQUESTS)
 1430 E TURAKA (PART II)
 1600 NATIONAL NETWORK NEWS (RELAYS)
 1610 FUJI REPETE
 1700 IROYIN DE'LE-D'OKO (NETWORKS IN YORUBA)
 1710 ORO ARUNKUNNA (NEWS ANALYSIS IN YORUBA)
 1715 HOGBE (EGUN NEWS)
 1725 FAAJI FAMILA (PART II)
 1800 LAGOS STATE NEWS
 1810 FAAJI FAMILA (PART III)
 1900 NEWS PANORAMA (RELAY)
 1930 ALE TUN LE (PART I)
 2000 IROYIN IPINLE EKO (LAGOS STATE NEWS IN YORUBA)
 2010 TETILEKO (PUBLIC SERVICE ANNOUNCEMENTS IN YORUBA)
 2015 KI NI NNKAN? (YORUBA PHILO-SOPHY)
 2100 ARAMADURO (SPOTLIGHT)
 2105 ERE WAKA
 2200 NATIONAL NETWORK NEWS (RELAY)
 2215 NEWS ANALYSIS (RELAY)
 2300 AKITIYAN IGBIMO ASOFIN (FROM THE NATIONAL ASSEMBLY IN YORUBA)
 2320 A R E M O T E (PART II)
 0000 (LE OLA MO TAN (PROGRAMMES PREVIEW FOR NEXT DAY)
 0005 PLEDGE, NATIONAL ANTHEM AND CLOSE DOWN.

RADIO NIGERIA IKEJA

91.8 KHz Medium Wave

WEDNESDAY

0530	DRUM SIGNAL
0533	OPENING
0534	NATIONAL ANTHEM AND PLEDGE
0535	ATAARO SULE (PROGRAMMES PARADE IN YORUBA)
0540	K'A JOSIN
0545	AKIBAR
0550	KI NI NNKAN? (YORUBA PHILOSOPHY)
0555	REKODU KAN (RECORD FILL-UP)
0600	B'OO JI O JI MI (PART I)
0630	IROYIN KUTUBAI (NEWS AT DAWN IN YORUBA)
0635	B'OO JI O JI MI (PART III)
0700	NATIONAL NETWORK NEWS (RELAY)
0715	NEWS ANALYSIS (RELAY)
0720	ONA 'RE O
0800	IROYIN DE'LE D'OKO (NETWORK NEWS IN YORUBA)
0810	ORO ARUNKUNNA (NEWS ANALYSIS IN YORUBA)
0815	AMUSEYA
1000	WORLD NEWS (RELAY)
1010	EDITORIALS (RELAY)
1015	E KU OJA O (MUSIC/CHAT FOR MARKET PEOPLE)
1100	IROYIN DE'LE-D'OKO (WORLD NEWS IN YORUBA)
1110	HOGBE (EGUN NEWS)
1120	E KU OJA O (PART II)
1200	TETILEKO (PUBLIC SERVICE ANNOUNCEMENTS IN YORUBA)
1205	ERE APALA ATI SAKARA
1300	WORLD NEWS (RELAY)
1310	EDITORIALS (RELAY)
1315	IROYIN DE'LE-D'OKO (WORLD NEWS IN YORUBA)
1325	IDERA (PART I)
1400	AGBON BI BIO (EGUN REQUESTS)
1430	IDERA (PART II)
1600	NATIONAL NETWORK NEWS (RELAY)
1610	ERE JUJU
1700	ORO ARUNKUNNA (NEWS ANALYSIS IN YORUBA)
1715	HOGBE (EGUN NEWS)
1725	O LE KU (PART I)
1800	LAGOS STATE NEWS
1810	O LE KU (PART II)
1900	NEWS PANORAMA (RELAY)
1930	ALE TUN LE (PART I)
2000	IROYIN IRINLE EKO (LAGOS STATE NEWS IN YORUBA)
2010	TETILEKO (PUBLIC SERVICE ANNOUNCEMENTS IN YORUBA)
2015	KI NI NNKAN? (YORUBA PHILOSOPHY)
2020	ALE TUN LE (PART II)
2030	AGBOYE (INTERVIEW) - REPEAT SATURDAY AT 1630 HOURS
2100	ARAMADURO (SPOTLIGHT)
2105	FUJI REPETE
2200	NATIONAL NETWORK NEWS (RELAY)
2215	NEWS ANALYSIS (RELAY)
2220	AREMOTE (PART I)
2300	AKITIYAN IGBIMO ASOFIN (FROM THE NATIONAL ASSEMBLY IN YORUBA)

2315	AREMOTE (PART II)
0000	ILE OLA MO TAN (PROGRAMMES PREVIEW FOR NEXT DAY)
0005	PLEDGE, NATIONAL ANTHEM AND CLOSE DOWN

THURSDAY

0530	DRUM SIGNAL
0533	OPENING
0534	NATIONAL ANTHEM AND PLEDGE
0535	ATAARO SULE (PROGRAMMES PARADE IN YORUBA)
0540	K'A JOSIN
0545	AKIBAR
0550	KI NI NNKAN? (YORUBA PHILOSOPHY)
0555	REKODU KAN (RECORD FILL-UP)
0600	B'OO JI O JI MI (PART II)
0630	IROYIN KUTUBAI
0635	B'OO JI O JI MI (PART III)
0700	NATIONAL NETWORK NEWS (RELAY)
0715	NEWS ANALYSIS (RELAY)
0720	ONA 'RE O
0800	IROYIN DE'LE-D'OKO (NETWORK NEWS IN YORUBA)
0810	ORO ARUNKUNNA (NEWS ANALYSIS IN YORUBA)
0815	AMUSEYA
1000	WORLD NEWS (RELAY)
1010	EDITORIALS (RELAY)
1015	OJISE (YORUBA REQUESTS)
1100	IROYIN DE'LE-D'OKO (WORLD NEWS IN YORUBA)
1110	WORLD NEWS (RELAY)
1120	EDITORIALS (RELAY)
1130	AGBON BI BIO (EGUN REQUESTS)
1140	ERE APALA
1150	NATIONAL NETWORK NEWS (RELAY)
1200	OJISE (PART II)
1210	TETILEKO (PUBLIC SERVICE ANNOUNCEMENT IN YORUBA)
1220	AREMOTE (PART II)
1230	AKITIYAN IGBIMO ASOFIN (FROM THE NATIONAL ASSEMBLY IN YORUBA)
1240	ERE WAKA
1250	IROYIN DE'LE-D'OKO (NETWORK NEWS IN YORUBA)
1300	WORLD NEWS (RELAY)
1310	EDITORIALS (RELAY)
1315	IROYIN DE'LE-D'OKO (WORLD NEWS IN YORUBA)
1325	E MU NOMBA (YORUBA MIXED MUSIC)
1400	MIJAYA (EGUN MUSIC)
1430	E MU NOMBA (PART II)
1600	NATIONAL NETWORK NEWS (RELAY)
1610	ERE WAKA
1700	IROYIN DE'LE-D'OKO (NETWORK NEWS IN YORUBA)
1710	ORO ARUNKUNNA (NEWS ANALYSIS IN YORUBA)
1715	HOGBE (EGUN NEWS)
1725	FAAJI FAMI (PART II)
1800	LAGOS STATE NEWS
1810	FAAJI FAMI (PART III)
1900	NEWS PANORAMA (RELAY)
1930	ALE TUN LE (PART I)
2000	IROYIN IRINLE EKO (LAGOS STATE NEWS IN YORUBA)
2010	TETILEKO (PUBLIC SERVICE ANNOUNCEMENTS IN YORUBA)
2015	KI NI NNKAN? (YORUBA PHILOSOPHY)
2020	ALE TUN LE (PART II)
2100	ARAMADURO (SPOTLIGHT)
2105	ERE APALA
2200	NATIONAL NETWORK NEWS (RELAY)



Radio Nigeria Ikeja Staff recording in the Studio.

RADIO NIGERIA IKEJA

91.8, KHz Medium Wave

2215	NEWS ANALYSIS (RELAY)	1300	WORLD NEWS	0534	NATIONAL ANTHEM AND PLEDGE
2220	AREMOTÉ (PART I)	1310	WAASI JIMO (MUSLIM SERMON IN YORUBA)	0535	ATAARO SULE (PROGRAMMES PARADE IN YORUBA)
2300	AKITITAN IGBIMO ASOFIN (FROM THE NATIONAL ASSEMBLY IN YORUBA)	1340	IROYIN DE'LE-D'OKO (WORLD NEWS IN YORUBA)	0540	K'A JOSIN
2315	AREMOTÉ (PART II)	1350	REKODDU KAN (RECORD FILL-UP)	0545	AKIBAR
3000	ILE OLA MO TAN (PROGRAMMES PREVIEW FOR NEXT DAY)	1300	ERE SELI	0550	KI NI NNKAN? (YORUBA PHILOSOPHY)
0005	PLEDGE, NATIONAL AND CLOSE DOWN	1415	INAJU JIMO	0555	REKODDU KAN (RECORD FILL-UP)
		1600	NATIONAL NETWORK NEWS (RELAY)	0600	AJIMUNA (PART I)
		1610	FUJI REPETE	0630	IROYIN KUTUHA! (NEWS AT DAWN IN YORUBA)
		1700	IROYIN DE'LE-D'OKO (NETWORK NEWS IN YORUBA)	0635	AJIMUNA (PART II)
		1710	ORO ARUNKUNNA (NEWS ANALYSIS IN YORUBA)	0700	NATIONAL NETWORK NEWS (RELAY)
0530	DRUM SIGNAL	1715	HOGBE (EGUN NEWS)	0715	NEWS ANALYSIS (RELAY)
0533	OPENING	1725	K'A JO JO (YORUBA REQUESTS)	0720	ONA 'RE O
0534	NATIONAL ANTHEM AND PLEDGE	1800	LAGOS STATE NEWS	0800	IROYIN DE'LE-D'OKO (NETWORK NEWS IN YORUBA)
0535	ATAARO SULE (PROGRAMMES PARADE IN YORUBA)	1810	K'A JO JO (PART II)	0810	ORO ARUNKUNNA (NEWS ANALYSIS IN YORUBA)
0540	K'A JOSIN	1900	NEWS PANORAMA (RELAY)	0815	E MURA OJA
0545	AKIBAR	1930	ALE TUN LE (PART I)	0900	EYIN 'MODE WONYI OI (CHILDREN'S PROGRAMME)
0550	KI NI NNKAN? (YORUBA PHILOSOPHY)	2000	IROYIN IPINLE EKO (LAGOS STATE NEWS IN YORUBA)	1000	WORLD NEWS (RELAY)
0555	REKODDU KAN (RECORD FILL-UP)	2010	TETILEKO (PUBLIC SERVICE ANNOUNCEMENTS IN YORUBA)	1010	EDITORIALS (RELAY)
0600	B'OOJI O JI MI (PART I)	2015	KI NI NNKAN? (YORUBA PHILOSOPHY)	1015	ALUFOGE (REQUESTS FOR YOUNG PEOPLE)
0630	IROYIN KUTUHA! (NEWS AT DAWN IN YORUBA)	2020	ALE TUN LE (PART II)	1100	IROYIN DE'LE-D'OKO (WORLD NEWS IN YORUBA)
0635	B'OOJI O JI MI (PART II)	2100	ARAMADURO (SPORTLIGHT)	1110	HOGBE (EGUN NEWS)
0700	NATIONAL NETWORK NEWS (RELAY)	2105	ERE APALA ATI SAKARA	1115	ERE JUJU
0715	NEWS ANALYSIS (RELAY)	2200	NATIONAL NETWORK NEWS (RELAY)	1200	TETILEKO (PUBLIC SERVICE ANNOUNCEMENTS IN YORUBA)
0720	ONA 'RE O	2215	NEWS ANALYSIS (RELAY)	1205	ERE FUJI
0800	IROYIN DE'LE-D'OKO (NETWORK NEWS IN YORUBA)	2220	AREMOTÉ (PART II)	1300	WORLD NEWS (RELAY)
0810	ORO ARUNKUNNA (NEWS ANALYSIS IN YORUBA)	2300	AKITITAN IGBIMO ASOFIN (FROM THE NATIONAL ASSEMBLY IN YORUBA)	1310	EDITORIALS (RELAY)
0815	AMUSERE	2315	AREMOTÉ (PART II)	1315	IROYIN DE'LE-D'OKO (WORLD NEWS IN YORUBA)
1000	WORLD NEWS (RELAY)	0000	ILE OLA MO TAN (PROGRAMMES PREVIEW FOR NEXT DAY)	1325	ILE NKO O? (YORUBA REQUESTS)
1010	EDITORIALS (RELAY)	0005	PLEDGE, NATIONAL ANTHEM AND CLOSE DOWN	1400	AGBON BI BIO (EGUN REQUESTS)
1015	E TURAKA (PART I)			1430	ILE NKO O? (PART II)
1100	IROYIN DE'LE-D'OKO (WORLD NEWS IN YORUBA)			1530	ERE APALA
1110	HOGBE (EGUN NEWS)			1600	NATIONAL NETWORK NEWS (RELAY)
1120	E TURAKA (PART II)			1610	ERE WAKA
1200	TETILEKO (PUBLIC SERVICE ANNOUNCEMENTS IN YORUBA)			1630	AGBOYE (INTERVIEW) - FROM WEDNESDAY 2030 HOURS)
1205	ORIN AWON ELESIN MUSULUMI	0530	DRUM SIGNAL	1700	IROYIN DE'LE-D'OKO (NETWORK NEWS IN YORUBA)
		0533	OPENING	1710	ORO ARUNKUNNA (NEWS ANALYSIS IN YORUBA)
				1715	HOGBE (EGUN NEWS)
				1725	O LE KU
				1900	WORLD NEWS (RELAY)
				1930	ALE TUN LE (PART I)
				2010	TETILEKO (PUBLIC SERVICE ANNOUNCEMENT IN YORUBA)
				2015	KI NI NNKAN? (YORUBA PHILOSOPHY)
				2020	ALE TUN LE (PART II)
				2100	A SESE BERE (PART I)
				2200	NATIONAL NETWORK NEWS (RELAY)
				2215	A SESE BERE (PART II)
				2300	ARIYA (THE VERY BEST IN JUJU MUSIC)
				0000	ILE OLA MO TAN (PROGRAMMES PREVIEW FOR NEXT DAY)
				0005	PLEDGE NATIONAL ANTHEM AND CLOSE DOWN.

SATURDAY



Dela Odumade, Senior Producer presenting one of his programmes.

RADIO NIGERIA: KADUNA

6.090 MHz (49 Meters) Short Wave
593 KHz (506 Meters) Medium Wave

SUNDAY

06.30	TRUMPET CALLSIGN:	06.00	TOP OF THE MORNING:	07.00	NEWS MAGAZINE:
06.35	READING FROM THE HOLY QUR'AN	06.15	GLOBAL SEATCHLIGHT:	07.30	MAKADIN SAFE:
06.50	PROGRAMME PROMOTIONS IN ENGLISH AND HAUSA:	06.30	BARKA DA ASJBA:	08.00	MUNA KWARYA:
07.00	NEWS MAGAZINE:	06.45	MU KEWAYE DUNIYA:	08.45	NOMA TSOHON OIINKI.
07.30	LET'S WORSHIP:	07.00	NEWS MAGAZINE:	09.00	MUSIC FROM INDIAN FILM:
08.15	MUNA KWARYA:	07.30	MAKADIN SAFE:	09.30	WASA KWAKWALWA:
09.00	PROG. PREVIEW:	08.00	MUNA KEARYA:	10.00	KADUNA STATE NEWS:
09.15	BOOK REVIEW/TABA KA LASHE:	08.45	ME KA GANI:	10.10	COMMERCIAL BREAK:
10.00	STATE NEWS:	09.00	RABIN SA'AR MAMMA SHATA:	10.15	LABARUN JIHAR KADUNA:
10.10	COMM. BREAK	09.30	KU SAN JIHAR KU:	10.25	COMMERCIAL BREAK:
10.15	LABARUN JIHAR KADUNA:	10.00	STATE NEWS:	10.30	MOTSI YAFI LABEWA:
10.25	NIGERIA MUSIC:	10.10	COMM. BREAK:	11.00	GARAYA MUSIC:
10.30	HIMMA'DAI MATA:	10.15	ZABARUN JIHAR KADUNA:	11.30	BAKONMU:
11.00	KASA MAI ALBARKA:	10.25	COMM. BREAK:	12.00	ANNOUNCERS CHOICE:
11.30	ILMI GISHIRIN ZAMAN DUNIYA:	10.30	A GAISHEKU:	12.10	MASU HIKIMA SUN CHE:
12.00	UNITED NATION'S 1/4 HOUR:	11.00	NOMAN ZAMANI:	12.15	KU MATSO YARA:
12.15	GLOBAL SEATCHLIGHT:	11.15	GAISHE GAISHEUKU:	12.30	ZAUREN SUDA:
12.30	SPORTS REVIEW:	11.45	LABARIN WASANI:	13.00	WORLD NEWS:
13.00	WORLD NEWS:	12.00	KIDAN NOMA (FEATURING)	13.10	INTERLUDE:
13.10	COMM. BREAK	12.30	MU DA GWAMNATINMU:	13.15	LABARUN DUNIYA:
13.15	LABARUN DUNIYA:	13.00	WORLD NEWS:	13.25	INTERLUDE:
13.25	COMM. BREAK	13.10	INTERLUDE:	13.30	JATAU NA ALBARKAWA:
13.30	PLEASE EXPLAIN:	13.15	LABARUN DUNIYA:	14.00	ZABBEN ROBB:
13.45	ON MY HAND	13.25	INTERLUDE:	14.14	KNOW YOUR CONSTITUTION:
14.00	ZABEN ROBB:	13.30	BAKIN KADUNA:	14.30	ZABEN DRASTIN:
14.15	MU KEWAYE DUNIYA:	14.00	ZABBEN ROBB (COMMERCIAL)	14.45	GADO IKON ALLAH:
14.30	ZABEN DRASTIN:	14.15	FOR CHILDREN:	15.00	IN BAKU BA GIDA:
14.45	SPEAKING OUT:	14.30	ZABEN DRASTIN:	15.30	SHAHARRAREN MAKADI:
15.00	KACICI - KACICI:	14.45	TALTANNA:	16.15	LABARUN JIHAR KADUNA
15.30	SHAHARRAREN MAKADI:	15.00	ANNOUNCERS CHOICE:	16.20	RADIO SHOW
16.00	STATE NEWS:	15.30	SHAHARRAREN MAKADI:	17.00	YAU DA GOBE
16.10	COMM. BREAK:	16.00	STATE NEWS:	18.00	ADDU'A
16.15	LABARUN JIHAR KADUNA:	16.10	INTERLUDE:	18.08	BA GIRIN GIRIN BA
16.25	COMM. BREAK:	16.15	LABARIN JIHAR KADUNA:	18.25	FROM ME TO YOU
16.30	SCHOOLS CHALLENGE:	16.25	INTERLUDE:	18.59	CHANGE OF FREQUENCY ANNOUNCEMENTS
17.00	BA GIRIN GIRIN BA:	16.30	SPORT REVIEW:	19.00	NEWS MAGAZINE
17.15	MEET THE PRESS:	17.00	YAU DA GOBE:	19.30	ZABI SONKA
18.00	LABARU A TAKAICE:	17.30	ARYAR KIRA:	20.00	WORLD NEWS
18.03	ADDU'A:	18.00	ADDU'A:	20.10	PERSONAL PAID ANNOUNCEMENTS
18.08	MASU HIKIMA SUNCE:	18.08	INTERLUDE:	20.15	LABARUNA DUNIYA
18.15	IN THE LIGHTER MOOD:	18.15	AT YOUR REQUEST:	20.25	INTERLUDE
18.30	KWARAIDA KUNNENKU NAWA:	19.00	NEWS MAGAZINE:	20.30	SOUND MAKERS
19.00	SCHOOLS DEBATE:	19.30	WORLD NEWS:	21.00	YAU DA GOBE
19.30	ZABI SONKA REQUEST IN HAUSA:	20.00	PERSONAL PAID ANNOUNCEMENTS:	21.30	MOTSI YAFI LABEWA
20.00	WORLD NEWS:	20.15	LABARUN DUNIYA:	22.00	STATE NEWS
20.10	COMM. BREAK:	20.25	NIGERIAN MUSIC:	22.10	COMMERCIAL BREAK
20.15	LABARUN DUNIYA:	20.30	TSARIN MULKINNU:		
20.25	COMM. BREAK:	20.45	FEMINE TIT BITS:		
20.30	WA'AZIN MUSULNCI:	21.00	YAU DA GOBE:		
21.00	SOUND MAKERS:	21.30	NEWS MAGAZINE:		
21.30	RABIN SA'AR KRISTA:	22.00	HERITAGE:		
22.00	STATE NEWS:	22.10	ASUBA TA GARI:		
22.15	LABARUN JIHAR KADUNA:	22.15	READING FROM THE H/ QUARAN:		
22.25	COMM. BREAK:	22.25	CLOSE DOWN:		
22.30	RADIO SHOW:	22.30			
23.00	DARE DUBU DA DAYA:	23.00			
23.15	ASUBA TA GARI:	23.15			
23.44	READING FROM THE HOLY QUR'AN:	23.44			
00.02	CLOSE DOWN.	00.02			

MONDAY

05.30	TRUMPET CALL SIGN:
05.35	READING FROM THE HOLY QUR'AN:
05.50	PROGRAMME PROMOTION IN ENGLISH AND HAUSA:
05.55	MORNING PRAYERS:

TUESDAY

05.30	TRUMPET CALL SIGN:
05.55	READING FROM THE HOLY QUARAN:
06.50	PROG. PROMOTION:
06.00	YAU DA GOBE:
06.55	IDONKU KUMARKU:



A Radio - Nigeria - Kaduna - Staff - going through some books at the reference library shelves.

RADIO NIGERIA: KADUNA

6.090 MHz (49 Meters) Short Wave
593 KHz (506 Meters) Medium Wave

		THURSDAY				
22.15	LABARUN JIHAR KADUNA:					
22.25	COMMERCIAL BREAK:					
22.30	NEWS MAGAZINE:			1715	FROM WED. 2115 HRS.) FROM GRASE TO GRACE (REPEAT FROM MONDAY 1745 HRS.)	
23.00	ASUBA TA GARI:			1745	ISLAM AND SOCIETY (PRODUCED BY AUDI AHMED REPEAT SAT. 1530 HRS.)	
23.44	READING FROM THE HOLY QUARAN:	05.30	TRUMPENT CALL SIGN			
00.02	CLOSE DOWN.	05.35	READING FROM THE HOLY QUR'AN	05.50	PROGRAMME PROMOTION IN ENGLISH AND HAUSA:	
WEDNESDAY		06.00	YAU DA GOBE	06.00	1800	WORLD NEWS
05.30	TRUMPET CALL SIGN:	06.30	BARKA DA ASUBA	06.55	1810	DEMOCRACY IN ACTION (PRODU- CED BY NEWS & C/AFFAIRS DIVI- SION REPEAT FRIDAY 1615 HRS.)
05.35	READING FROM THE HOLY QUR'AN:	07.00	IDONKU KIMARKU	07.30	1830	KIWON LAFIYA (PRODUCED BY LADAN KONTAGORA REPEAT FROM TUESDAY 1145 HRS.)
05.50	PROGRAMME PROMOTIONS	08.00	NEWS MAGAZINE	08.00	1845	ZABEN ALHURU
05.55	IN ENGLISH AND HAUSA:	09.00	MUNA KWARYA	09.30	1930	BARKA DA YAU (PRODUCED BY NEWS & CURRENT AFFAIRS DIVI- SION)
06.00	MORNING PRAYERS:	09.30	BARKA DA HANTSI	10.00	1955	ALKAWARI KAYA NE (PRODUCED BY NEWS & CURRENT AFFAIRS DIVISION REPEAT 2240 HRS TO- DAY)
06.30	YAU DA GOBE:	10.00	KUSAN JIHAR KU	10.10	2015	JIHAR KANO KE MAGANA (PRO- DUCED BY KANO STATE MIN. OF INFORMATION, AND HOME AFFA- IRS. REPEAT FRIDAY 1000 HRS.)
06.30	BARKA DA ASUBA:	10.10	STATE NEWS	10.15	2045	MU KAMA GONA (PRODUCED BY A. E. R. L. S. SAMARU, ZARIA RE- PEAT SAT. 2045 HRS.)
07.00	NEWS MAGAZINE:	10.15	INTERLUDE	10.25	2100	NEWS IN FULFULDE/KANURI/ NUPE (PRODUCED BY NEWS & CURRENT AFFAIRS DIVISION)
07.30	MAKADIN SAFE:	10.25	LABARUN JIHAR KADUNA	10.30	2115	JAKAR MAGORI (PRODUCED BY HASSAN SULAIMAN REPEAT FRI- DAY 1700 HRS.)
08.00	MUNA KWARYA:	10.30	NIGERIAN MUSIC	10.30	2145	NEWS NATION WIDE
09.00	BARKA DA HANTSI:	10.30	A GAISHE KU	10.30	2215	UNITED NATIONS 14 HOUR (PRO- DUCED BY THE STAFF OF THE UNI- TED NATIONS RADIO IN NEW YORK)
09.30	A WANNAN MAKO:	10.30	MU TAHHAUNA	10.30		
10.00	STATE NEWS:	11.30	HERITAGE	11.00		
10.10	COMM. BREAK:	11.30	BAKIN KADUNA	11.30		
10.15	LABARUN JIHAR KADUNA	11.45	MU YI WASA	11.45		
10.30	KACICI, KACICI:	12.15	DA TSHOWAR ZUMA	12.15		
10.25	COMM. BREAK:	12.30	WORLD NEWS	12.30		
11.00	MEET THE PRESS:	13.00	INTERLUDE	13.00		
11.45	A GAISHEKU	13.10	LABARUN DUNIYA	13.10		
12.00	TSARIN MULKIN	13.15	INTERLUDE	13.15		
12.30	DACA MASU SAURARONMU:	13.25	LABARUN DUNIYA	13.25		
13.00	WORLD NEWS:	13.30	KWARYAR KIRA	13.30		
13.10	COMM. BREAK:	14.00	ZABEN ROBB	14.00		
13.15	LABARUN DUNIYA:	14.15	FEMININE TIT BITS,	14.15		
13.25	COMM. BREAK:	14.30	ZABEN DRSTIN	14.30		
13.30	UWARGIDA KUNNE KI WAWA:	14.45	NOMAN ZAMANI	14.45		
14.00	ZABEN ROBB:	15.00	TWENTY QUESTION	15.00		
14.15	KU MATSO YARA:	15.30	SHAHARRAREN MAKADI	15.30		
14.30	ZABEN DRASTIN:	16.00	STATE NEWS	16.00		
14.45	BOOK REVIEW/TABA KA LASHE:	16.10	INTERLUDE	16.10		
15.00	HAUSA BA DABO BACE:	16.30	LABARUN DUNIYA	16.30		
15.30	HARRAREN MAKADI:	1640	AL KAWANI KAYA NE (HALILU AH- MED GETSO REPEAT 1955 HRS.)	1640		
16.00	STATE NEWS:	1700	JAKAR MAGURI (PRODUCED BY HASSAN SULAIMAN REPEAT	1700		
16.10	COMM. BREAK:					
16.15	LABARUN JIHAR KADUNA:					
16.25	COMM. BREAK:					
16.30	MIXED BAG					
17.00	YAU DA GOBE					
17.30	HIMMA DAI MATA					
18.00	ADDU'A					
18.08	INTERLUDE					
18.15	PLEASE EXPLAIN					
18.30	SA MAI ALBARKA					
19.00	NEWS MAGAZINE					
19.30	ZABI SONKA					
20.00	WORLD NEWS					
20.10	PERSONAL PAID ANNOUNCE- MENTS					
20.15	LABARUN DUNIYA					
20.25	NIGERIAN MUSIC					
20.30	ILMI GISHIRIN ZAMAN DUNIYA					
21.00	YAU DA GOBE					
21.30	RABIN SA'AR KRISTA					
22.00	STATE NEWS					
22.10	INTERLUDE					
22.15	LABARUN JIHAR KADUNA					
22.25	INTERLUDE					
22.30	NEWS MAGAZINE					
23.00	ASUBA TAGARI					
23.44	READING FROM THE HOLY QUR'AN					
00.02	CLOSE DOWN:					



Muhammadu Ardo, Chief Engineer, RN - Kaduna

RADIO NIGERIA: KADUNA

6.090 MHz (49 Meters) Short Wave
593 KHz (506 Meters) Medium Wave

2230	LABARUN DUNIYA
2240	ALKWARI KAYA'NE (PRODUCED BY NEWS & CURRENT AFFAIRS DIVISION REPEAT FRIDAY 1640 HRS.)
2300	MUSULUNCI KE MAGANA (PRODUCED BY MALAM IBRAHIM TABIR REPEAT FRIDAY 1430 HRS.)
2330	ZABEN DARE
0800	NEWS SUMMARY (ENGLISH & HAUSA)
0005	READING FROM THE HOLY QU'AN BY ALHAJI AYUBA UMARU
0015	CLOSE DOWN

22.25	INTERLUDE
22.30	NEWS MAGAZINE
23.00	ASUBA TA GARI
23.44	READING FROM THE HOLY QU'AN
00.02	CLOSE DOWN:

12.30	KADUNA STATE THIS WEEK
13.00	WORLD NEWS
13.10	INTERLUDE
13.15	LABARUN DUNIYA
13.25	INTERLUDE
13.30	ZAU'EN SUDA
14.00	ZABEN ROBB
14.15	KU MATSO YABA
14.45	KO KUN SAN
15.00	YAU DA GOBE
15.30	SHAHARRAREN MAKADI
16.00	KADUNA STATE NEWS
16.15	INTERLUDE:
16.15	LABARUN JIHAR KADUNA
16.25	INTERLUDE
16.30	SATURDAY SPORTS
16.30	PERSONALITY SCENE
19.00	NEWS MAGAZINE
19.30	ZABI SONKA
20.00	WORLD NEWS
20.10	INTERLUDE
20.15	LABARUN DUNIYA
20.25	NIGERIAN MUSIC
20.30	TWENTY QUESTIONS
21.00	YAU DA GOBE
21.30	SAKON MUSULMCI
22.00	STATE NEWS
22.10	INTERLUDE
22.15	LABARUN JIHAR KADUNA
22.25	INTERLUDE
22.30	NEWS MAGAZINE
23.00	ASUBA TA GARI
23.44	READING FROM THE HOLY QU'AN
00.02	CLOSE DOWN:

SATURDAY

FRIDAY

05.30	TRUMPET CALL SIGN
05.35	READING FROM THE HOLY QU'AN
05.50	PROGRAMME PROMOTION IN ENGLISH AND HAUSA
06.00	YAU DA GOBE
06.30	BARKA DA ASUBA
07.00	NEWS MAGAZINE
07.30	MAKADIN SAFE
08.00	MUNA KWARYA
09.00	STATE IN ACTION
09.30	IN BA KU BA GIDA
10.00	STATE NEW
10.10	COMMERCIAL BREAK
10.15	LABARU JIHAR KADUNA
10.25	NIGERIAN MUSIC
10.30	DAGA BAKIN MAI ITA
11.00	MUSIC ON THE MOVE
11.15	TOPICAL GIST
12.00	BARKA DA RANA
12.30	GAISHE GAISHENKU
13.00	WORLD NEWS
13.10	COMMERCIAL BREAK
13.15	LABARUN DUNIYA
13.25	COMMERCIAL BREAK
13.30	WAKOKIN ADDININ MUSU-I LUMI
14.00	ZABEN ROBB
14.14	FOR CHILDREN
14.45	KO KUN SAN
15.00	WA'AZIN MUSULUNCI
15.30	SHAHARRAREN MAKADI
16.00	THE STATE NEWS
18.10	INTERLUDE
16.15	LABARUN JIHAR KADUNA
16.25	INTERLUDE
16.30	SHIRIN FATAWA
17.00	YAU DA GOBE
17.30	JATAU NA ALBARKAWA
18.00	ADDUA
18.08	INTERLUDE
18.15	YOURS SINCERELY
18.59	CHANGE OF FREQUENCY ANNOUNCEMENT
19.00	NEWS MAGAZINE
19.30	ZABI SONKA
20.00	WORLD NEWS
20.10	PERSONAL PAID ANNOUNCEMENTS
20.15	LABARUN DUNIYA
20.25	NIGERIAN MUSIC
20.30	DAGA MASU SAURARONMU
21.00	YAU DA GOBE
21.30	BAKON MU
22.00	STATE NEWS
22.10	INTERLUDE
22.15	LABARUN JIHAR KADUNA

05.30	TRUMPET CALL SIGN
05.35	READING FROM THE HOLY QU'AN
05.50	PROGRAMME PROMOTION
05.55	MORNING PRAYERS
06.00	YAU DA GOBE
06.30	BARKA DA ASUBA
08.55	IDONKU KIMARKU
07.00	NEWS MAGAZINE
07.30	MAKADIN SAFE
08.00	ZABEN LIPTION TEA
09.00	MESSAGE OF ISLAM
09.15	JIHAR KADUNA A' WANNAN MAKON
09.45	MEKA GANI
10.00	STATE NEWS
10.10	INTERLUDE
10.15	LABARUN JIHAR KADUNA
10.25	NIGERIAN MUSIC
10.30	TATSUNIYOYI DA ALMARA
10.45	IN THE LIGHTER MOOD
11.00	HAUSA BA DABO BACE
11.30	MIXED BAG
12.00	MU SHAKATA
12.15	KNOW YOUR CONSTITUTION

RECORD REQUEST COUPON

Cut this Coupon and mail to: The Producer

(Title of appropriate programme)

(Name of RN Station)

Please play

By

For (Name and Address)

Date Required

Occasion

Sender (Name and Address)

RADIO BENDEL

PROGRAMME SCHEDULE

773KHz - 388 metres
4.932MHz - 60 metres

0530 - 0005 hrs

SUNDAY		MONDAY		TUESDAY	
5.00	DRUMS AND OPENING FORMALITIES	5.00	DRUMS AND OPENING FORMALITIES	5.00	DRUMS AND OPENING FORMALITIES
5.05	REFLECTIONS (Christians)	5.05	REFLECTIONS (Muslims)	5.05	REFLECTIONS (Christians)
5.10	SUNDAY MELODIES (COMM.)	5.10	BENDEL ECHOES (COMM.)	5.10	BENDEL ECHOES (COMM.)
6.00	SAYINGS OF THE WISE	6.00	SAYINGS OF THE WISE	6.00	SAYINGS OF THE WISE
6.05	SUNDAY STAR	6.05	774 SHOW (COMM.)	6.05	RADIO LINK (COMM.)
6.25	ATTENTION PLEASE (COMM.)	6.25	ATTENTION PLEASE (COMM.)	6.25	ATTENTION PLEASE (COMM.)
6.30	THE NEWS/ANALYSIS	6.30	THE NEWS	6.30	THE NEWS/ANALYSIS
6.45	MEDITATION (Rep. from Thur. 10.15 pm)	6.40	THE WAY IT IS (Rep. Wed. each 6.40 am)	6.30	NATIONAL NETWORK NEWS
7.00	NATIONAL NETWORK NEWS	6.50	774 SHOW (COMM.)	6.30	RADIO LINK (COMM.)
7.15	GOSPEL LIGHT HOUR	6.50	NATIONAL NETWORK NEWS	6.30	ASSEMBLY REPORT
7.45	THE WEEK AHEAD	7.15	774 SHOW (COMM.)	6.30	RADIO LINK (COMM.)
8.00	NEWS IN EDO, ESAN, EZON AND IGBO	7.30	ASSEMBLY REPORT	6.30	NEWS IN EDO, ESAN, EZON AND IGBO
8.20	FARMING HINTS (Rep. from Fr. 9.10 p.m.)	7.40	774 SHOW (COMM.)	6.30	RADIO LINK (COMM.)
8.30	FEMININE FAIR (Rep. from Fr. 9.30 pm)	8.00	NEWS IN EDO, ESAN, EZON AND IGBO	6.30	NEWS IN EDO, ESAN, EZON AND IGBO
9.00	NEWS IN ISOKO, ITSE-KIRI, URHOBO AND YORUBA	8.20	774 SHOW (COMM.)	6.30	RADIO LINK (COMM.)
9.20	JUST A DISC	9.00	NEWS IN ISOKO, ITSE-KIRI, URHOBO AND YORUBA	6.30	NEWS IN ISOKO, ITSE-KIRI, URHOBO AND YORUBA
9.25	PUBLIC SERVICE ANNOUNCEMENT	9.20	JUST A DISC	6.30	JUST A DISC
9.30	ISSUES AND ANSWERS (Rep. from Thur. 8 pm)	9.25	PUBLIC SERVICE ANNOUNCEMENT	6.30	PUBLIC SERVICE ANNOUNCEMENT
10.00	NEWS IN BRIEF	9.30	WEEK IN RETROSPECT	6.30	ANNOUNCEMENT
10.03	WHAT'S ON RADIO BENDEL	10.00	NEWS IN BRIEF	6.30	DELTA PANORAMA
10.15	DROP US A LINE (Rep. from Sat. 8 pm)	10.03	AS YOU GET ALONG (COMM.)	6.30	NEWS IN BRIEF
10.30	VARIETY TIME (Bi-monthly)	10.45	CASE FILE (Rep. Tue. 10.15 pm)		
11.00	NEWS IN BRIEF	11.00	NEWS IN BRIEF		
11.03	ME AND MY MUSIC	11.03	REGGAE TIME (COMM.)		
11.15	ADVENTURES OF PA OGBEM (Rep. from Tue. - 15 pm)	11.30	TIPS AND TUNES (Igbo/Ika)		
11.30	TIPS AND TUNES (Ndokwa/Osoto)	12.00	NEWS IN BRIEF		
12.00	NEWS IN BRIEF	12.03	MIDDAY MELODIES (COMM.)		
12.03	FAMILY FAVOURITE (COMM.)	12.03	ATTENTION PLEASE (COMM.)		
12.55	ATTENTION PLEASE (COMM.)	12.55	ATTENTION PLEASE (COMM.)		
1.00	THE WORLD NEWS	1.00	THE WORLD NEWS		
1.20	ME AND MY MUSIC				
1.30	DELIVERANCE HALF HOUR				
2.00	NEWS IN BRIEF				
2.03	HOSPITAL REQUEST				
2.30	THE MUSIC I LOVE (Rep. from Thur. 9.30 pm)				
3.00	NEWS IN BRIEF				
3.03	THE PRESS THIS WEEK (Rep. from Sat. 2.03 pm)				
3.15	RADIO THEATRE (Bi-monthly)				
3.45	ATTENTION PLEASE (COMM.)				
4.00	NATIONAL NETWORK NEWS				
4.15	SCHOOLS CHALLENGE				
4.45	FROM THE CAMPUS (Rep. Mon 10.15 pm)				
5.00	NEWS/NEWS ANALYSIS				
5.15	LITERARY WORLD				
5.20	JUST A DISC				
5.25	PUBLIC SERVICE ANNOUNCEMENT				
5.30	NEWS IN EDO, ESAN, EZON AND IGBO				

OUR RATE CARD

For Your Effective Advertising

AFTER years of quiet circulation during which a systematic study was undertaken to ascertain readers' tastes and advertisers' requirements, we are proud to present today a magazine which, we hope, has successfully translated into form your highly esteemed ideas and suggestions.

The current editions of RADIO/TV TIMES reveal a history of steady progress and improvement in quality, standard and scope. In fact there is every ground now for one to say "Oh Yes! The RADIO/TV TIMES has made it!" We are not stopping at that either.

We have more reasons than many a publisher to cry over "INFLATION" and rising production costs. But where "Satisfaction First" (for readers and advertisers) is the over-riding principle, profit occupies only the next place in our policy.

This explains why, in spite of the extremely keen competition in the field of commercial advertising, RADIO/TV TIMES can still afford to accept advertisement at a rate below one kobo to reach one thousand readers. What is more, when you consider the aggregate positive effect of an advertisement in RADIO/TV TIMES, supplementing your combinations on radio and television, the resultant massive impact is quite obvious.

The advertisement rates tabulated below took effect from 1st of April, 1977. We look forward to your substantial patronage as soon as possible, while assuring you of prompt satisfaction always.

i. THE JOURNAL: The "Radio/TV Times" is the monthly programme journal covering all the radio and television stations, published by the Federal Radio Corporation. The

journal is now 25 years old on the market. As a supplementary guide to programmes' schedule, the readership of this journal is understandably tied up with the radio and television audience — a well balanced cross-section of the society, representative of all ages, sexes, income brackets, intellectual levels and tastes. That the current size of this audience has grown into millions is now common knowledge.

Apart from highlighting Radio/TV programmes, the journal seeks to generate public interest in healthy social events, as well as local, national and international issues, with emphasis on Africa. But while taking in its stride the wide range of programmes offered by the radio and television, "Radio/TV Times" is reaking new grounds of its own to embrace a wider range of interests in order to provide greater satisfaction for its ever expanding readership.

Public demand for the "Radio/TV Times" in recent times has been so extensive that the possibility of stepping up the current circulation in stages to keep pace ultimately with the radio and television audience is being actively explored.

ii. PUBLICATION TIMING: 1st day of month of issue.

iii. TECHNICAL DATA: ACTUAL SIZE: 21 x 28cm

ADVERT AREA: (3 Column-page of 13 ens each)

Full Page	17.5 x 24 cm
2 Full Columns	11.5 x 24 cm
1 full Column	6.5 x 24 cm
1 Half page	17.5 x 12 cm
2 Half Columns	11.5 x 12 cm
1 Half Column	6.5 x 12 cm

iv. PRINTING: Web offset lithographic process on 90-gsm Art paper cover and 60 gsm Bond paper text.

COLOURS: Full Colours — cover and text.

v. CIRCULATION: Current 25,000
Projected (short-term) 150,000
Projected (long-term) 500,000

vi. READERSHIP: Current survey shows that there are about ten readers to a copy. These include family units, educational and other institutions, working class elements, business-men and industrialists, of all ages, sexes and status. Aggregate readership therefore is about 250,000 at present.

vii. DISTRIBUTION: The "Radio/TV Times" is circulated through the 19

States of the Federation, as well as the English speaking countries in Africa and Europe. Complementary copies are also circulated to Radio and Television Stations in non English speaking Countries of the World.

viii. ADVERTISEMENT RATES: A.

Run of Paper (Black/White)	
Full page	₦250.00
2 Columns	₦180.00
1 Column	₦120.00
Half page	₦150.00
2 Half Columns	₦120.00
1 Half Column	₦ 80.00
Centre Spread	₦600.00
Double pages	₦500.00
Full page R.O.P.	
(Colour)	₦360.00

B. GUARANTEED POSITIONS (COLOUR)

Full page I.F.C.	₦480.00
Full page I.B.C.	₦480.00
Full page O.B.C.	₦550.00
Centre Spread	₦900.00

Cost per thousand: on 25,000 (Current) = 1k on 50,000 (Projected) = 1/6k

ix. DISCOUNTS:

- 15% Agency commission will be allowed to bona fide Advertising Agencies.
- 10% Frequency discount will be allowed for twelve consecutive insertions.
- 2% Frequency discount will be allowed for six consecutive insertions.

x. GENERAL CONDITIONS: All orders for advertisements in "Radio/TV Times" are accepted on the express terms that:

- They are subject to cancellation without notice at the discretion of the Corporation or its authorised agents. In that event any money received in respect of such cancellation will be refunded.
- The Corporation may make necessary alteration to advertisement to ensure its conformity with the standards and style of "Radio/TV Times".
- The rates and terms quoted are subject to review as occasions demand.
- Advertisement copies and materials, as well as notices of cancellation or amendment are received 30 clear days prior to date of publication.

to: The Commercial Manager (Publications) F.R.C.N, 45 Martins Street, Private Mail Bag 12504, Lagos Nigeria, Telephone: 636209

OGUN RADIO

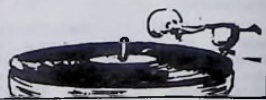
PROGRAMME SCHEDULE

945 KHZ Abeokuta

934 KHZ

900 KHZ

SUNDAY		8.00 "	STATE NEWS IN BRIEF	3.30	STATE NEWS AND
		8.05 "	TOMORROW ON OGUN		IROHIN
4.50 A.M.	TONE	8.10 "	RADIO REFLECTIONS - (REP. FROM 5.05 A.M.)	3.40 "	KOKO INU IWE IROHIN
4.55 "	STATION OPENING -			3.50 "	NI FAAJI
6.00 "	PROGRAMME PARADE	8.15 "	CLASSIFIED ANNOUNCEMENTS	4.30 "	NEWS HIGHLIGHTS
5.05 "	REFLECTIONS (REP. 8.10 P.M.)	8.30 "	"EAGERNESS OF GOD IN HIS OWN CREATION (SPONSORED)	4.33 "	NI FAAJI (CONTD.)
5.10 "	ORGAN MUSIC (REP. 10.45 P.M.)		IROHIN	5.00 "	NATIONAL NEWS
5.40 "	IN THE MOOD (SOFT SENTIMENTAL MUSIC)	9.00 "	ORIN IYIN (LIB. COMPI-LATION)	5.10 "	NI FAAJI (CONTD.)
6.00 "	NEWS AT SIX	9.10 "	NATIONAL NEWS	5.30 "	NEWS HIGHLIGHTS
6.10 "	IN THE MOOD (CONTD.)	9.30 "	ANNOUNCER'S CHOICE	5.33 "	NI FAAJI (CONTD.)
6.30 "	IROHIN	9.40 "	OGBON OLOBGON	6.00 "	NEWS AND REPORTS
6.35 "	*E JE KA JOSIN	10.00 "	REPT. THURS. 9.10 A.M.	6.35 "	PROGRAMME PROMO
7.05 "	OGUN RADIO THIS WEEK	10.45 "	SUNDAY AT THE ORGANS (REP. FROM 5.10 A.M.)	6.45 "	SALES PROMOTION
7.15 "	CLASSIFIED ANNOUNCEMENT		SOFT TEMPO	7.00 "	OWE LESIN ORO (REP. SATURDAY 9.15 P.M.)
7.30 "	NEWS HIGHLIGHTS	11.15 "	MID-NIGHT REPORT	7.15 "	IROHIN
7.33 "	PHONODISC SHOW TIME (SPONSORED)	11.55 "	SOFT TEMPO (CONTD.)	7.30 "	TONIGHT ON OGUN RADIO
8.00 "	PRESS REPORT	12.00 M.N.	LATER TODAY ON OGUN RADIO	7.33 "	FROM THE OGUN STATE HOUSE OF ASSEMBLY
8.15 "	SALES PROMOTION	12.55 A.M.	CLOSE DOWN	8.00 "	NEWS HIGHLIGHTS
8.30 "	NEWS HIGHLIGHTS	1.00 "		8.10 "	ERE ODUN IBILE
8.33 "	SONG OF INSPIRATION			8.15 "	STATE NEWS
9.00 "	IROHIN	MONDAY		8.30 "	THOUGHT FOR THE DAY (REP. FROM 5.05 A.M.)
9.10 "	BEHIND THE CONSOLE (MUSIC COMPLIED BY PROGRAMME)	4.50 A.M.	TONE	8.33 "	CLASSIFIED ANNOUNCEMENTS
		4.55 "	STATION OPENING -		NEWS HIGHLIGHTS
9.30 "	NEWS HIGHLIGHTS	5.00 "	PROGRAMME PARADE		DEEPER XTIAN LIFE
	OPERATOR ON DUTY	5.05 "	THOUGHT FOR THE DAY (REP. 8.10 P.M.)	9.00 "	MINISTRY (SPON-SORED)
9.33 "	JUJU MUSIC	5.10 "	MUSICAL JAMBOREE	9.10 "	IROHIN
10.00 "	KARA O LE (SPON-SORED BY BEECHAM LTD)	6.00 "	NEWS AT SIX		ISE TONI NILE IGBIMO
		6.10 "	MUSICAL JAMBOREE (CONTD.)	9.30 "	ASOFIN
11.00 "	MUSICAL QUIZ (REPEAT ON THURSDAY 11.30 A.M.)	6.30 "	IROHIN	9.40 "	NATIONAL NEWS
11.30 "	NEWS HIGHLIGHTS	6.35 "	MUSICAL JAMBOREE (CONTD.)	10.00 "	ANNOUNCER'S CHOICE
11.33 "	YOUTH SCENE (REP. FROM SATURDAY 11.30 A.M.)	7.00 "	*EDITORIALS AND PRESS REPORTS	10.30 "	XT MINISTRY EVANGELISTICAL TEAM (SPON-SORED)
		7.15 "	CLASSIFIED ANNOUNCEMENTS	11.55 "	KASUN LAYO
12.00 NOON	NEWS AT MID-DAY		NEWS HIGHLIGHTS	12.00 M.N.	MID-NIGHT REPORT
12.10 P.M.	MUSICAL INTERLUDE	7.30 "	MUSICAL JAMBOREE (CONTD.)		LATER TODAY ON OGUN RADIO
12.15 "	CLASSIFIED ANNOUNCEMENTS	7.33 "	SALES PROMOTION	1.00 A.M.	CLOSE DOWN
12.30 "	*MEET THE PRESS (REP. WED. 10.33 P.M.)	8.15 "	NEWS HIGHLIGHTS	4.50 A.M.	TUESDAY
1.30 "	NEWS HIGHLIGHTS	8.30 "	MUSICAL JAMBOREE (CONTD.)	4.55 "	TONE
1.33 "	*MUSIC FROM THE CLASSIC (REP. TUES. 7.23 P.M.)	8.33 "	IROHIN		STATION OPENING -
		9.00 "	E KU ORO AJE		NATIONAL ANTHEM,
2.00 "	THEATRE OF THE AIR	9.10 "	NEWS HIGHLIGHTS	5.00 "	THE PLEDGE AND
2.30 "	NEWS HIGHLIGHTS	9.30 "	E KU ORO AJE (CONTD.)	5.05 "	OPENING MARCH
2.33 "	MO BA A YO - YORUBA REQUEST PROGRAMME	10.00 "	OMONIDE (SPONSORED BY BEECHAM LTD.)	5.05 "	PROGRAMME PARADE
		11.00 "	SCHOOL SCIENCE -		*AIYEBEGE (REP. 6.55 A.M.)
3.30 "	STATE NEWS AND IROHIN	11.30 "	NEWS HIGHLIGHTS	5.10 "	*AIYEBEGE (REP. 6.55 A.M.)
3.45 "	SALES PROMOTION	11.33 "	MID-MORNING SHOW	6.00 "	E JI RE O
4.00 "	MELODY MAKERS (BIG-GRAPHY OF GREAT NIGERIA MUSICIANS)	12.00 NOON	NEWS AT MID-DAY AND EDITORIALS	6.10 "	NEWS AT SIX
		12.15 P.M.	CLASSIFIED ANNOUNCEMENTS	6.30 "	E JI RE O (CONTD.)
4.30 "	NEWS HIGHLIGHTS		MID-DAY MELODIES	6.35 "	IROHIN
4.33 "	MELODY MAKERS	12.30 "	IROHIN	6.55 "	*AIYEBEGE (REP. 8.10 P.M.)
5.00 "	NATIONAL NEWS	1.00 "	MID-DAY MELODIES (CONTD.)	7.00 "	*EDITORIALS AND PRESS REPORTS
5.10 "	MUSICAL INTERLUDE	1.10 "	NEWS HIGHLIGHTS	7.15 "	CLASSIFIED ANNOUNCEMENTS
5.15 "	ERIN KEKE - ON DISC PANORAMA	1.30 "	MID-DAY MELODIES (CONTD.)		
5.30 "	LOBA IPINLE OGUN	1.33 "	NEWS HIGHLIGHTS		
5.30 "	NEWS HIGHLIGHTS	2.30 "	PROGRAMME PROMO		
5.33 "	PROGRAMME PROMO	2.33 "	SALES PROMOTION		
5.36 "	SALES PROMOTION	3.00 "	*AYOKA (CONTD. ON TUESDAY 6.45 P.M.)		
5.45 "	MO RANTI (REP. THURSDAY 10.33 P.M.)		OMOLASO (REP. THURS. 3.00 P.M.)		



OGUN RADIO

PROGRAMME SCHEDULE

945 KHZ Abeokuta
884 KHZ Ibeja
900 KHZ Itele

2.30 "	NEWS HIGHLIGHTS	10.00 "	*AWELEWA (SPON- SORED BY BEECHAMS LTD.)	07.00 "	*EDITORIALS AND PRESS REPORTS
2.33 "	MID-DAY MELODIES				
3.00 "	OMCLASO - (REP FROM MON. 3.00 P.M.)	11.00 "	ORO REE	07.15 "	CLASSIFIED ANNOUN- CEMENT
3.30 "	STATE NEWS AND IROHIN	11.30 "	NEWS HIGHLIGHTS	07.30 "	NEWS HIGHLIGHTS
3.40 "	KOKO INU IWE IROHIN	11.33 "	FUJI/AW/REBE	07.33 "	E KAARO O (CONTD.)
3.50 "	NI FAAJI	12.00 NOON	NEWS AT MID-DAY AND EDITORIALS	08.00 "	IBUKUN ORISUN IYE RECORDS SHOW
4.30 "	NEWS HIGHLIGHTS	12.15 P.M.	CLASSIFIED ANNOUN- CEMENTS	08.30 "	NEWS HIGHLIGHTS
4.33 "	NI FAAJI (CONTD.)			08.33 "	ARA NFE AAJO (SPON- SORED BY A.C. CHRIST- LEB)
5.00 "	NATIONAL NEWS	12.30 "	RHYTHM FROM THE HOLY QUARAN		IROHIN
5.10 "	NI FAAJI (CONTD.)	01.00 "	IROHIN	09.00 "	APALA MUSIC -
5.30 "	NEWS HIGHLIGHTS	01.10 "	PROGRAMME PARADE	09.10 "	NEWS HIGHLIGHTS
5.33 "	NI FAAJI (CONTD.)	01.15 "	ALLAHU AKBAR	09.30 "	POLYGRAM 1/2 HOUR -
6.00 "	NEWS AND REPORTS	01.45 "	MID-DAY MELODIES	10.30 "	NEWS HIGHLIGHTS
6.30 "	PROGRAMME PROMO	02.30 "	NEWS HIGHLIGHTS	10.33 "	O WAMBE
6.35 "	SALES PROMOTION	02.33 "	MID-DAY MELODIES	11.30 "	YOUTH SCENE - REP. SUNDAY 11.33 A.M.
6.45 "	AGBE ALSOLA -	03.00 "	NI FAAJI	12.00 NOON	NEWS AT MID-DAY AND EDITORIALS
7.00 "	IROHIN	03.30 "	STATE NEWS AND IROHIN	12.15 P.M.	CLASSIFIED ANNOUN- CEMENTS
7.10 "	TONIGHT ON OGUN RADIO	03.40 "	KOKO INU IWE IROHIN	12.30 "	AT THE STADIA
7.15 "	FROM THE OGUN STATE HOUSE OF ASSEMBLY	03.50 "	NI FAAJI (CONTD.)	01.00 "	IROHIN
7.30 "	NEWS HIGHLIGHTS	04.30 "	NEWS HIGHLIGHTS	01.10 "	THINKING OF YOU
7.33 "	ERE YA ITO FEATURE EGUN/ANAGO MUSIC)	04.33 "	NI FAAJI (CONTD.)	01.30 "	NEWS HIGHLIGHTS
8.00 "	STATE NEWS	05.00 "	NATIONAL NEWS	01.33 "	THINKING OF YOU
8.10 "	*AIYEGBE (REP. FROM 5.05 A.M.)	05.30 "	NI FAAJI (CONTD.)	02.20 "	NEWS HIGHLIGHTS
8.15 "	CLASSIFIED ANNOUN- CEMENTS	05.50 "	NEWS HIGHLIGHTS	02.23 "	SCHOOLS CHALLENGE
8.30 "	NEWS HIGHLIGHTS	06.26 "	NI FAAJI (CONTD.)	03.00 "	NI FAAJI
8.33 "	GOVERNMENT HALF HOUR (REP. SAT. 7.33 P.M.)	06.45 "	NEWS AND REPORTS	03.30 "	STATE NEWS AND IROHIN
		07.00 "	ORIKI ORILE (REP. FROM THE HOUSE OF ASSEMBLY	03.40 "	KOKO INU IWE IROHIN
9.00 "	IROHIN	07.15 "	NEWS HIGHLIGHTS	03.50 "	NI FAAJI (CONTD.)
9.10 "	ISE TONI NILE IGBIMO ASOFIN	07.30 "	NI FAAJI (CONTD.)	04.30 "	NEWS HIGHLIGHTS
9.30 "	NATIONAL NEWS	07.33 "	IYA LAKKI (FEP. SAT. 10.00 A.M.)	05.00 "	NATIONAL NEWS
9.40 "	MUSICAL INTERLUDE	08.00 "	STATE NEWS	05.10 "	NI FAAJI (CONTD.)
9.45 "	BOOK REVIEW	08.10 "	MUSLIM CALL TO PRAYER (REP. FROM 5.05 A.M.)	05.30 "	NEWS HIGHLIGHTS
10.00 "	GOSPEL MIRROR			05.33 "	JEN WI TEMI (REPT. FROM WED. 7.33 P.M.)
10.30 "	MO RANTI (REP. FROM SUNDAY 7.00 P.M.)	08.15 "	CLASSIFIED ANNOUN- CEMENTS	06.00 "	WORLD NEWS
11.30 "	TWILIGHT - ZONE			06.10 "	MUSICAL INTERLUDE
11.55 "	MID-NIGHT REPORT	08.30 "	NEWS HIGHLIGHTS	06.15 "	ORUNMILA
12.00 M.N.	TWILIGHT - ZONE	08.33 "	OHUN ISLAM (SPON- SORED BY ALMADIYA MUSLIM MISSION, OGUN STATE	06.30 "	NEWS HIGHLIGHTS
12.55 A.M.	LATER TODAY ON OGUN RADIO			06.35 "	SALES PROMOTION
1.00 "	CLOSE DOWN			06.45 "	AYEWO IWE
				07.00 "	IROHIN
FRIDAY				07.10 "	TONIGHT ON OGUN RADIO
04.50 A.M.	STONE	08.00 "	IROHIN	07.30 "	NEWS HIGHLIGHTS
04.55 "	STATION OPENING -	08.10 "	ISE TONI NILE IGBIMO ASOFIN	07.33 "	GOVERNMENT HALF HOUR (REP. FROM THURSDAY 8.30 P.M.)
05.00 "	PROGRAMME PARADE	09.30 "	NATIONAL NEWS	08.00 "	STATE NEWS
05.05 "	MUSLIM CALL TO PRAYER (REP. 8.40 P.M.)	09.40 "	MUSICAL INTERLUDE	08.10 "	*AIYEGBE (REP. FROM 5.05 A.M.)
05.10 "	MUSICAL JAMBOREE	09.45 "	REDEEMED CHRISTIAN CHURCH OF GOD		CLASSIFIED ANNOUN- CEMENTS
05.15 "	NEWS AT SIX	10.30 "	KASUN LAYO	08.15 "	RECONCILIATION AND REVIVAL HOUR (SPON- SORED)
05.20 "	MUSICAL JAMBOREE	11.55 "	MIDNIGHT REPORT	09.00 "	IROHIN
05.30 "	IROHIN	12.00 M.N.	MUSICAL LAYO (CONTD.)	09.10 "	MUSICAL INTERLUDE
05.35 "	MUSICAL JAMBOREE	12.55 A.M.	LATER TODAY ON OGUN RADIO	09.15 "	OWE LESIN ORO (REP. FROM MON. 6.45 P.M.)
07.00 "	EDITORIALS AND PRESS REPORTS		CLOSE DOWN		NATIONAL NEWS
07.15 "	CLASSIFIED ANNOUN- CEMENTS	SATURDAY			INTERLUDE
07.30 "	NEWS HIGHLIGHTS	04.50 A.M.	STONE	09.30 P.M.	ERE ALADUN
07.33 "	MUSICAL JAMBOREE	04.55 "	STATION OPENING -	09.40 "	E KUKALE (REP. FROM THURS. 11.00 A.M.)
08.15 "	SALES PROMOTION	05.00 "	PROGRAMME PARADE	10.45 "	PARTY TIME
08.30 "	MUSICAL JAMBOREE	05.05 "	*AIYEGBE (REP. 6.55 A.M.)	10.45 "	MID-NIGHT REPORTS
08.35 "	IROHIN	05.10 "	E KAARO O	11.55 "	PARTY TIME (CONTD.)
08.40 "	MUSICAL JAMBOREE	05.15 "	NEWS SIX	12.00 M.N.	LATER TODAY ON OGUN RADIO
08.45 "	IROHIN	05.20 "	E KAARO O (CONTD.)	12.55 A.M.	CLOSE DOWN
08.50 "	NEWS HIGHLIGHTS	05.30 "	IROHIN		
08.55 "	IFURA (CONTD.)				

VOICE OF NIGERIA

FREQUENCY SCHEDULE

WEST AFRICAN SERVICE				
GMT	LANGUAGE	TARGET AREA	METER BAND	FREQ KHZ
0500 0600	ENGLISH	WEST AFRICA	41	7255
0600 0700	FRENCH	WEST AFRICA	41	7255
0700 0800	HAUSA	WEST AFRICA	41	7255
0800 0900	ENGLISH	WEST AFRICA	41	7255
0900 1700	ENGLISH	WEST AFRICA	41	7255
1700 1800	HAUSA	WEST AFRICA	41	7255
1800 1900	FRENCH	WEST AFRICA	41	7255
1900 2030	ENGLISH	WEST AFRICA	41	7255
2030 2100	HAUSA	WEST AFRICA	41	7255
2100 2200	FRENCH	WEST AFRICA	41	7255
NORTH AFRICA AND OVERSEAS SERVICE				
0500 0600	FRENCH	NORTH AFRICA & OVERSEAS	16 19	17800 15120
0600 0800	ENGLISH	NORTH AFRICA & OVERSEAS	16 19	17800 15120
0800 0830	ARABIC	NORTH AFRICA & OVERSEAS	16 19	17800 15120
0830 1000	ENGLISH	NORTH AFRICA & OVERSEAS	16 19	17800 15120
1010 1200	ENGLISH	NORTH AMERICA	19	15120
1210 1400	ENGLISH	CARIBBEAN	19	15120
1410 1530	ENGLISH	AUSTRALIA	19	15120
1540 1700	ENGLISH	INDIA	19	15120
1700 1800	ARABIC	NORTH AFRICA & OVERSEAS	16 19	17800 15120
1800 1900	ENGLISH	NORTH AFRICA & OVERSEAS	16 19	17800 15120
1900 2000	FRENCH	NORTH AFRICA & OVERSEAS	16 19	17800 15120
2000 2100	GERMAN	NORTH AFRICA & OVERSEAS	16 19	17800 15120
2100 2200	ENGLISH	NORTH AFRICA & OVERSEAS	16 19	17800 15120
CENTRAL AND SOUTHERN AFRICA SERVICE				
1500 1600	ENGLISH	CENTRAL AND SOUTHERN AFRICA	25	11770
1600 1700	KISWAHILI	CENTRAL AND SOUTHERN AFRICA	25	11770
1700 2100	ENGLISH	CENTRAL AND SOUTHERN AFRICA	25	11770
EAST AFRICAN TRANSMISSION				
0500-1000	ENGLISH	EAST AFRICA	25	11770
1000 1100	KISWAHILI	EAST AFRICA	25	11770

Federal Radio Corporation of Nigeria



METER BANDS

You can receive our transmissions throughout the country on the following Short Wave frequencies. (Medium Wave is limited to its locality of transmission).

RADIO NIGERIA

- LAGOS	4.990 MHz (60 Meters) Short Wave	5.30 a.m. - 2400hrs
	7.275 MHz (41 Meters) Short Wave	11 a.m. - 4.30 p.m.
	7.285 MHz (41 Meters)	11 a.m. - 5 p.m.
	1088 KHz (276 Meters) Medium Wave	
	92.936 MHz Frequency Modulated (FM)	
	3.326 MHz (50KW) Short Wave	
-2 (AM/FM Stereo Lagos area only)	97.66 MHz (FM Stereo)	
	1458 KHz (206 Meters) Medium Wave	
- ENUGU	6.025 MHz (49 Meters) Short Wave	
	4.750 MHz (60 Meters) Short Wave	
	827 KHz (363 Meters) Medium Wave	
- IBADAN	6.050 MHz (49 Meters) Short Wave	
	657 KHz (457 Meters) Medium Wave	
	575 KHz (522 Meters) Medium Wave	
- IKEJA	918 KHz	Medium Wave
- KADUNA	6.090 MHz (49 Meters) Short Wave	
	593 KHz (506 Meters) Medium Wave	
	4.77 MHz (60 Meters) Short Wave	
	1107 KHz (271 Meters) Medium Wave	
- OWERRI	1107 KHz	Medium Wave
RADIO ABUJA	909 KHz (330 Meters)	Medium Wave

Buy the Monthly RADIO/TV Times for details of Programme schedules and other related information.