

5  
035  
-51



NIGERIA

# Annual Report of the Posts and Telegraphs Department for the year 1950-51

*Laid on the Table of the House of Representatives  
as Sessional Paper No. 21 of 1952*

PRICE 9d NET

*Printed and Published by the Government Printer, Lagos, 1952  
To be purchased from the C.M.S. Bookshops, Lagos and  
Port Harcourt, the S.I.M. Bookshop, Jos, and  
the Crown Agents for the Colonies  
4, Millbank, London, S.W.1*

## Annual Report of the Posts and Telegraphs Department for the year 1950-51

In the Annual Report of the Posts and Telegraphs Department for the year 1945-46 the Postmaster-General wrote :—

“.....much of the time that could well be spent in rebuilding a system seriously weakened after six years of war conditions, has been taken up in an endeavour to meet the ever-increasing demands for more services, both private and official”.

Subsequent reports have emphasized the almost unprecedented demands from the public for increased Postal and Telecommunications services, reiterating, meanwhile, aspects of the long-term planning for rebuilding the system. It is, therefore, pleasing to record in this year's Report the completion of some long-term plans, having for effect improvement of service. These improvements have been shown in detail in the appropriate sections of the Report.

That the improved services have been fully utilised is confirmed by statistics of traffic and increases in revenue ; at the same time, it has to be admitted that they are still insufficient to meet public demand. What little criticism there was of the Department during the year was mainly on the grounds of inadequacy of the services offered, rather than of their inefficiency. What is not generally realised is the extent of the increased traffic which the Department has had to cope with over the last few years. The graphs at Appendix XV, and the table below, show the position clearly.

Year	Letters and Parcels handled	Telegrams handled	Telephone Calls handled	
			Inland Lagos only	Trunk
1946-47 .. ..	31,643,000	1,837,240	1,124,240	441,200
1947-48 .. ..	35,903,900	1,892,500	1,261,130	502,860
1948-49 .. ..	47,105,800	1,944,750	1,419,780	585,290
1949-50 .. ..	53,611,900	1,961,630	1,579,500	700,930
1950-51 .. ..	63,828,400	2,100,670	1,728,350	815,090

Whilst increasing Postal business can be handled with little difficulty, it has to be remembered that the provision of additional telegraph and telephone services involves obtaining the necessary equipment from the United Kingdom and constructing it in Nigeria. Naturally, this takes time, and it follows that such services cannot but lag behind public demand to some extent.

### FINANCE

#### DEPARTMENTAL REVENUE—APPENDIX I

2. Departmental Revenue has increased correspondingly with the volume of business transacted. The actual figure of £617,650 is the highest ever recorded and represents an increase of £67,557 or 12.3 per cent over that for 1949-50. Practically all revenue sub-heads show increases over last year's figures, the more noticeable being:

	Increase £
Sale of Stamps .. ..	31,121
Share of Postage on Parcels .. ..	6,831
Telegrams .. ..	8,994
Telephone Rentals .. ..	8,295
Radio Distribution Service .. ..	4,511

### NON-DEPARTMENTAL REVENUE—APPENDIX III

3. The net revenue collected or earned, and credited to non-Departmental Heads, increased by £25,916 from £204,898 in 1949-50 to £230,814.

### VALUE OF OFFICIAL SERVICES—APPENDIX IV

4. The estimated value of services provided to other Government Departments amounted to £373,193 as compared with £328,165 in 1949-50, an increase of £45,028.

### EXPENDITURE—APPENDIX I

5. (a) The total expenditure increased from £1,074,444 in 1949-50 to £1,451,831, and was made up as follows:—

	1950-51
	£
Personal Emoluments .. .. .	695,808
Other Charges .. .. .	638,194
Special Expenditure .. .. .	117,829
	<hr/>
	£1,451,831

(b) The award of Temporary Additions to Rates of Pay as from 1st April, 1950, is the principal cause of the increased expenditure of £104,392 on Personal Emoluments.

(c) The Sub-heads which contributed the most to the increase of £221,366 under Other Charges were:—

	£
Local Transport and Travelling .. .. .	16,994
Mail Services (External and Internal) .. .. .	67,060
Maintenance: Telecommunications .. .. .	25,302
Unallocated Stores Purchases .. .. .	96,939

As stated in previous Reports the amount expended on Stores is not a true recurrent expenditure figure; it represents the difference in the value of Stores purchased and Stores actually used. Practically all the expenditure making up the figure of £96,939 was in respect of bulk equipment for projected major construction Works.

(d) In addition to the amount of £117,829 expended on new Works under Special Expenditure Sub-heads, a sum of £62,838 was spent on projects financed under Colonial Development and Welfare and Development Loan Expenditure Schemes.

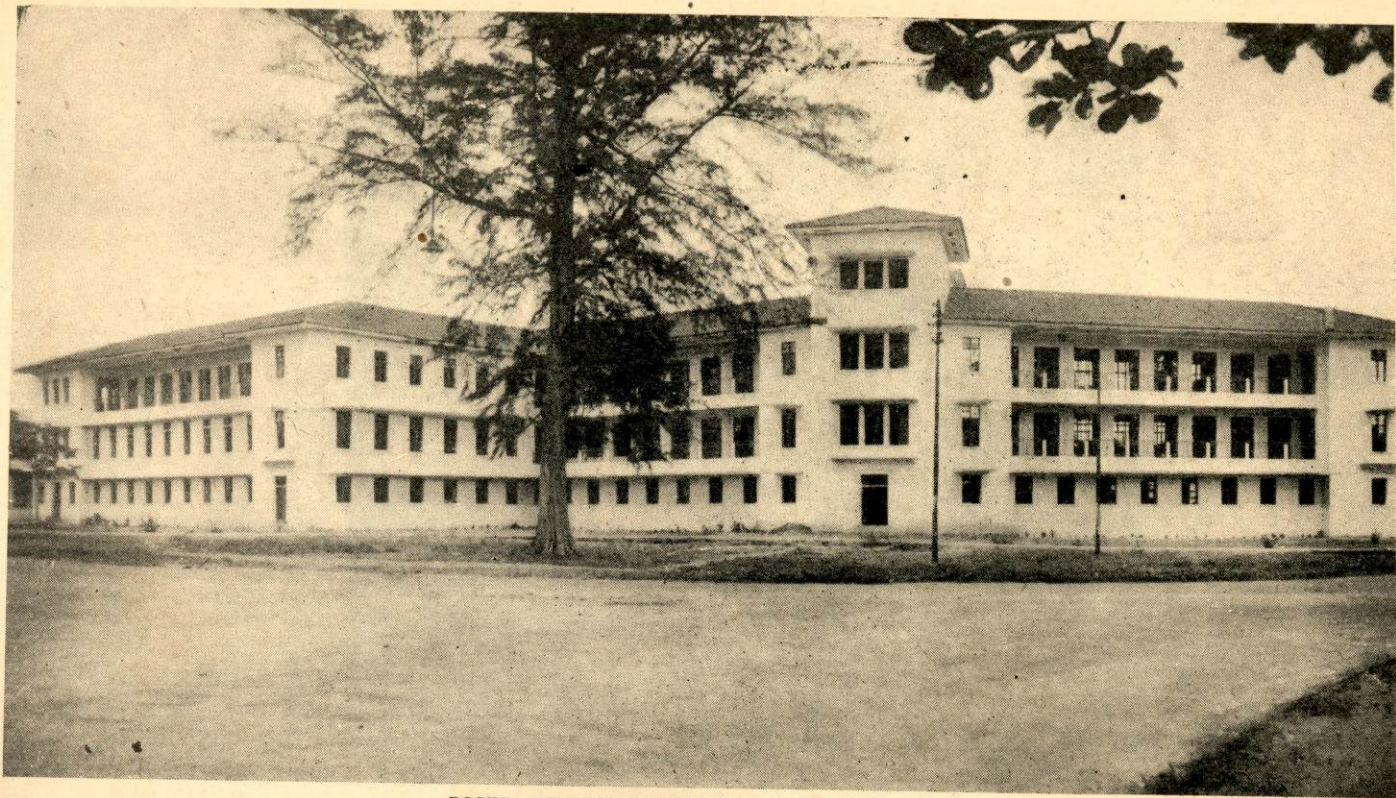
### FINANCIAL TRANSACTIONS—APPENDIX II

6. Cash receipts and disbursements at Post Offices amounted to £10,968,107 and £10,954,366 respectively, an increase of £4,255,932 over the combined figure for last year. These amounts, which are detailed in the Appendix, show the volume of the Department's financial business far more realistically than an ordinary statement of Revenue and Expenditure.

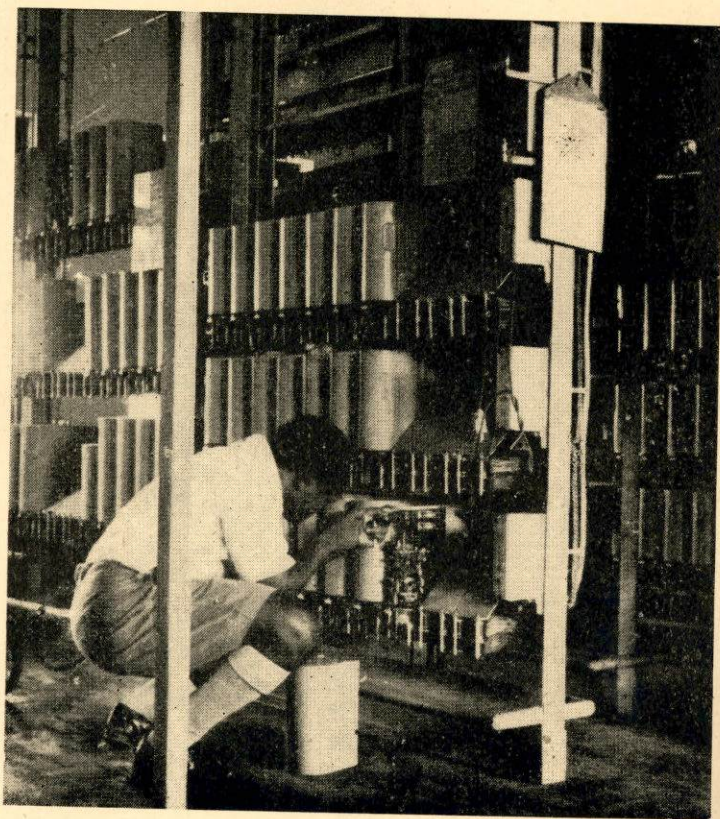
### POSTAL BUSINESS

#### POST OFFICES AND POSTAL AGENCIES—APPENDIX V

7. (a) The Postal Agencies at Okene, Ikare, Ughelli and Kwale were converted to the status of Departmental Post Office, bringing the total number of Post Offices in the country to 138.



POSTS AND TELEGRAPHS HEADQUARTERS, LAGOS



ADJUSTING SWITCHGEAR  
PORT HARCOURT AUTOMATIC TELEPHONE EXCHANGE

(b) Mobile Post Office No. 1, the first travelling Post Office in Nigeria, made its appearance in Lagos on the 31st March, 1951, operating at Iddo Station and elsewhere. It will, ultimately, be used in those rural districts of the Eastern Region where Post Office facilities are limited.

(c) Thirty-nine new Postal Agencies were opened during the year, and three—at Surulere, Idiroko and Kano City—were closed permanently. There are now 456 Agencies operating throughout the country and the demand for more is still pronounced. The further expansion of Agency facilities, and extension of Savings Bank business to those which are more progressive, are features of impending development.

(d) The frequency of inspections of Post Offices and Agencies improved very considerably during the year owing to the availability of staff. Only two Offices and three Agencies were overdue for inspection at the end of the year.

#### BUILDINGS

8. (a) In Lagos, the new Posts and Telegraphs Headquarters building was completed and occupied in March 1951. Formal opening took place on the 2nd April, 1951. In the Regions, good progress was again made with the Departmental building programme. New Post Offices at Shagamu, Okene, Ikare, Ughelli, Kwale, Ibadan (Parcels Office), Ogwashi-uku, Issele-uku, Kaduna North (Telegraph Office), Abakaliki and Ogidi, were completed and opened during the year. Extensions to the existing Post Offices at Zaria and Minna were also completed.

(b) At the end of the year work was in progress on new Departmental buildings at Sapele, Owo, Jebba, Bukuru, Potiskum, Katsina, Asaba, Port Harcourt (Branch Office), Nbawsi, Onitsha and Calabar.

#### POSTAL ARTICLES HANDLED—APPENDIX VI

9. (a) The estimated number of all postal articles handled during the year was 63,828,400, which represents an increase of over ten million, or approximately 19 per cent, on the 1949-50 total of 53,611,900. The detailed figures for the different classes of Postal traffic given in the Appendix show that the main factor contributing to this large increase was the number of letters, etc. posted within Nigeria. In section (c): Articles despatched abroad, it is revealing to note that the volume of Air Mail has increased at the cost of reduction in surface mail. It is fairly safe to assume that the moderate Air Mail rates are largely responsible for this situation.

(b) The statistics of Registered Articles handled are also revealing, for the reasons that the number despatched and received from abroad decreased by 25,700 as compared with last year, whilst the total number of Registered Articles posted in Nigeria for internal delivery increased by 657,100.

#### RETURNED LETTER OFFICE—APPENDIX VI (B)

10. The number of postal articles dealt with in the Returned Letter Office totalled 172,313, a welcome decrease on the figure for last year. However, remittances found enclosed in articles totalled almost £6,258, an increase of £1,347 over last year's total. Fortunately, it was possible to return £4,294 of this amount to senders, and the remainder, where senders could not be traced, was credited to Revenue. A disturbing feature was the heavy increase in the number of parcels which could not be returned. Of 1,301 parcels dealt with, only 165 could be returned to the senders; 422 unclaimed parcels, containing articles of value, were sold by auction and realised £22.

## CHARLATANIC CORRESPONDENCE

11. Interception of items judged to be of a fraudulent nature was discontinued in 1949 owing to staff shortage. Since that time there has been an influx of this type of correspondence. Endeavour is being made to intercept as many items as possible which infringe the Ordinance.

### SURFACE MAILS

12. (a) No additional surface mails were introduced and some complaints were received of the delay caused to letter and parcel mails sent from Great Britain to Nigeria by slow cargo vessels. It will be appreciated, of course, that this Administration is not responsible for the despatch of mails from abroad. The two existing mail vessels cannot accommodate the large volume of surface mail forwarded from Great Britain; over 4,800 bags of letter and parcel mail are received on arrival of each mail ship. There is little prospect of improvement in the position until the additional mail vessel is put into service at the end of 1951. Direct despatch of parcels between Liverpool and the new Ibadan Parcels Office commenced in 1951. Thus, by eliminating the intermediate handling in Lagos, parcels to and from the Ibadan and Oshogbo areas have been expedited and congestion in the Lagos Parcels Office relieved to some extent.

(b) Internal surface mails services were reviewed constantly and efforts made to accelerate existing arrangements, by making direct despatches between Post Offices wherever possible, thereby reducing delay caused by congestion at intermediate offices. This scheme of direct vouching was introduced between the following large offices and others:—

Maiduguri-Lagos	Kaduna Junction-Birnin Kebbi
Kano-Calabar	Kaduna Junction-Sokoto
Onitsha-Sapele	Jos-Garkida
Onitsha-Warri	Uzuakoli-Port Harcourt
Kaduna Junction-Kaura Namoda	

(c) The Departmental motor-mail service which was introduced in the Cameroons last year was not as successful as had been hoped. The vehicles deteriorated rapidly because of bad road conditions and the cost of maintenance was, in consequence, excessive. Spare parts were difficult to obtain and it has been necessary to replace some of the fleet.

(d) The Okrika-Kalabari disturbances in the Eastern Region disrupted mail services in the area for some time.

### AIR MAILS

13. (I) *External*—(a) An Air Parcel Post Service between the United Kingdom and West Africa was inaugurated on the 26th of May, 1950.

(b) The direct despatch of letter mail by air to Lagos from Amsterdam, Hamburg and Nairobi came into operation and the vouching, which is not at present reciprocal, has worked satisfactorily since its inauguration in September 1950.

(c) In addition to the services of the British Overseas Airways Corporation and the West African Airways Corporation, increased external Air Mail services were arranged from Lagos and Kano using the following air lines:—

- (i) Air France : to France, French Cameroons and French Equatorial Africa.
- (ii) Sabena Air Lines : to Belgian Congo.
- (iii) South African Airways : to Johannesburg.

(II) *Internal*—(a) The internal air service operated by West African Airways Corporation worked very satisfactorily during the year and, with the exception of the Tiko service, only isolated instances of delay to mail carried were reported. At Tiko there were occasional interruptions of the time-table owing to the unserviceability of the airfield.

(b) Amendments to the Corporation's schedule enabled the introduction of a daily exchange of mail between Lagos and Enugu, with a twice-daily service on Tuesdays and Fridays.

#### POSTAL DELIVERY SERVICES

14. House-to-house delivery was introduced at Ife and Owo.

#### GENERAL

15. (a) *Postage Meter Franking Machines*.—Approval was given to three firms in Lagos and one in Ibadan to buy and instal postage meter franking machines. No difficulty has been experienced in their introduction and the machines have proved labour-saving and convenient.

(b) *Pillar Boxes*.—New pillar boxes were installed at Jos, Bauchi, Minna and two each at Lagos and Yaba.

(c) *Private Boxes*.—Additional private boxes were installed at Jos, Kaduna, Minna, Gusau, Nguru, Ogidi, Onitsha, Ahoada, Okigwe, Opobo, Orlu, Aba, Owerri, Port Harcourt, Umuahia, Uzuakoli, Uyo and Victoria. There is still a heavy demand for this service.

(d) *Stamp Cancelling Machines*.—Electrical stamp cancelling machines were installed at Ibadan, Kano, Kaduna Cross Post Centre and Port Harcourt. These have greatly accelerated treatment of correspondence previously hand-stamped.

(e) *Rates*.—No changes in postage rates were made during the year.

#### BANKING AND REMITTANCE SERVICE

##### SAVINGS BANK

16. (a) A full report on the year's working in the Savings Bank and detailed accounts (which are not yet available), will be published separately, at a later date, in the Post Office Savings Bank Annual Report. Available statistics show that, although the total number of Depositors and the number of transactions of the bank decreased by 10,657 and 5,802 respectively, the amount standing to the credit of Depositors on the 31st of March, 1951, had increased by £340,724. The figures are :—

	1949-50	1950-51
Total number of Depositors .. ..	179,611	168,954
Amount standing to the credit of Depositors at the 31st of March, 1951 .. ..	£2,752,484	£3,093,208
Combined number of Deposit and Withdrawal transactions during the year ..	285,606	279,804

(b) The decrease in the number of Depositors has been caused mainly by ex-Servicemen having exhausted gratuities which were paid into Savings Bank Accounts on demobilisation. The increase in the amount standing to the credit of Depositors is due, principally, to the approval granted to certain Savings groups, organisations and authorities, to exceed the maximum permissible amount which can be deposited. Examination of the status of these excess balances is being made.

(c) At the end of 1950, the machines required for mechanising the Savings Bank's accounting system arrived from the United Kingdom and operating staff were recruited for training. Progress towards conversion to the mechanical system has been satisfactory and it is anticipated that the Bank will be fully mechanised before the end of 1951.

#### MONEY ORDERS—APPENDIX VII

17. (a) The extent to which the very popular Money Order service has increased since the end of the war is shown in the graph at Appendix XV. The value of Orders Issued was £5,315,575, an increase of £1,200,367 over last year's figure of £4,115,208. Similarly, the value of Money Orders paid increased by £1,142,718 from £4,039,514 in 1949-50 to £5,182,232. Remittances to the United Kingdom, South Africa and Gambia increased, whereas those to the Gold Coast and Sierra Leone were lower. In the reverse direction, remittances from the United Kingdom and the Gold Coast increased but those from Gambia, South Africa and Sierra Leone decreased. The net revenue earned as commission on the Money Order Service—External and Internal—increased by £1,841 from £9,292 in 1949-50 to £11,133. Commission allowed to other countries for Money Orders issued in Nigeria and paid abroad increased by £22 from £595 in 1949-50 to £616.

(b) The value of Trade Charge Money Orders remitted in respect of charges collected on Cash-on-Delivery Parcels, increased by £77,313 from £233,981 to £311,294. Revenue earned in the form of commission increased from £1,164 to £1,556.

#### POSTAL ORDERS—APPENDIX VIII

18. (a) Postal Order business, which has shown a slow but steady upward trend since the end of the war, increased substantially. The number and value of Orders issued increased by 251,798 and £198,030 respectively, and the number and value of Orders paid by 158,799 and £127,014 respectively. The amount of commission received on these transactions increased correspondingly by £1,313 from £6,866 to £8,179.

(b) The value of uncashed Postal Orders credited to revenue decreased by £856 from £1,189 to £333.

#### TELECOMMUNICATIONS SERVICES

##### TELEGRAPH TRAFFIC—APPENDIX IX

19. (a) The total number of all classes of telegrams handled by the Department during the year increased by 139,039 from 1,961,634 in 1949-50 to 2,100,673. It is gratifying to record that the bulk of this increase was in paid traffic and that the revenue collected for the transmission of telegrams increased, accordingly, by £9,353, from £116,503 in 1949-50 to £125,856. The increase is attributed, firstly, to the increased telegraph facilities available, and, secondly, to the fact that more paid traffic could be handled, owing to a further decrease of approximately 20,000 official telegrams.

(b) Revenue received for Registered Telegraphic Addresses was £854, an increase of £49 over last year's figure.

(c) Official telegrams exchanged with French West Africa Colonies were practically negligible owing to the diversion of meteorological telegrams to aeradio wireless circuits.

(d) There was an increase of 13,798 in the number of external telegrams handled, paid and official, and revenue from paid traffic increased by £2,637.

(e) An improvement in the transmission time of telegrams between main offices resulted from extension of teleprinter working.

(f) Acceptance of telegrams at the Town Agencies in Ibadan, Kano and Port Harcourt was introduced.

(g) Revised charges for external telegrams were introduced on the 1st of July, 1950.

(h) Arrangements made to deal with telegraph traffic from competitors in the Algiers to Capetown Motor Rally proved satisfactory. Free internal telegram facilities were extended to competitors and officials.

#### TELEPHONE TRAFFIC—APPENDIX X

20. (a) The total number of trunk telephone calls handled by the Department reached a record figure of 815,091, an increase of 114,160 over last year's total of 700,931. The revenue earned for all telephone business was £81,674, an increase of £11,234 on last year's figure of £70,440.

(b) In last year's Annual Report it was mentioned that the introduction of official Air Letter Forms seemed to have achieved its purpose in reducing official telegraph traffic. This year, there was a further reduction of approximately 20,000 in the number of official telegrams handled. It is disturbing, however, to report that the number of official Telephone Trunk Calls (which are now shown in the Appendix) increased by the very significant figure of approximately 29,800.

21. The Overseas Radio Telephone Service operated by Messrs Cable and Wireless, Limited, handled 867 calls during the year; the Departmental portion of revenue earned on this account was £204. The facilities offered by this service are still limited to subscribers connected to Lagos Exchange. Experiments for extending the service to Enugu and Kaduna were carried out, but, owing to the unreliability of the internal trunk services, results did not justify an extension.

#### WIRELESS

22. Except for minor faults, caused through obsolescent equipment, the Departmental wireless services worked satisfactorily during the year and the standard of operating appears to have improved with experience. New wireless links were provided between Lagos-Benin and Lokoja-Kaduna. The Lagos-Ibadan link was discontinued in July 1950 when an extra teleprinter circuit was added to the line system.

#### RADIO DISTRIBUTION SERVICES—APPENDIX XII (d)

23. The number of subscribers to the Radio Distribution Service was 12,786, being an increase of 2,987 on last year. Revenue earned increased by £4,511 from £26,702 in 1949-50 to £31,213.

#### CONSTRUCTION AND DEVELOPMENT

(Appendices XII and XIII)

#### TELEGRAPHS

24. (a) Installation of carrier equipment, referred to in paragraph 27 (c), made available a number of voice frequency morse telegraph circuits between Lagos-Enugu, Lagos-Kaduna, Oshogbo-Kaduna and Oshogbo-Enugu. To obtain the full benefit of these circuits teleprinter terminal equipment is required. Orders for such equipment submitted nearly two years ago are still outstanding despite repeated attempts to expedite delivery.

(b) Additional telegraph circuits were also provided between Uyo-Arochuku, Port Harcourt-Degema and Ijebu-Ode-Shagamu.

#### WIRELESS

25. New Departmental Wireless Stations were opened at Lokoja and Benin City to supplement land-line traffic. New equipment was installed at Mamfe and Bamenda, to work Enugu ; obsolete equipment at Brass and Okitipupa was replaced.

#### BROADCASTING

26. (a) Regular broadcasts from the low-power transmitter at Lagos were continued throughout the year and will be maintained until the newly-formed Broadcasting Department takes over.

(b) The village community listening sets at Badagry, Ikorodu, Shagamu, Ilaro and Epe were regularly serviced.

(c) A Radio Distribution Service was opened at Katsina and installation work for a similar service at Warri was nearing completion at the end of the year. Additional amplifying equipment was installed for existing Radio Distribution Services at Lagos, Ibadan, Kano, Kaduna and Ijebu-Ode.

#### TELEPHONES

27. (a) The third and final extension to the existing Lagos manual Exchange, which was completed last year, proved quite inadequate to meet the growing demand for new telephones. The position was relieved by the opening of subsidiary Exchanges at Ikoyi and Apapa but little more can be done to meet the public demand for telephone service until the new Lagos Automatic Exchange is installed. The equipment for this Exchange is available and the buildings to accommodate it in Broad Street, and the satellites at Apapa, Ebute Metta and Ikeja are practically complete. Installation of the automatic equipment is expected to commence towards the end of 1951, and the Exchange should be ready for operation about eighteen months later. Meanwhile, considerable progress has been made in laying additional underground cable and in converting telephone numbers to a five-digit numbering scheme in readiness for conversion to automatic working.

(b) New Telephone Exchanges were opened at Owerri, Orlu, Abak and Birnin Kebbi, and new and larger switchboards were installed at Enugu, Minna, Benin City, Sapele, Calabar and Akure Exchanges. At the end of the year the extension of Kaduna Exchange was in progress.

(c) The installation of carrier equipment enabled new telephone trunk services to be opened between Lagos-Enugu and Lagos-Kaduna. Additional trunk circuits were also provided on the carrier between Oshogbo-Benin, Oshogbo-Enugu, Oshogbo-Kaduna and Benin City-Enugu. On the whole, the equipment gave very satisfactory results, but owing to the vulnerability of the overhead line system, services are always liable to interruption.

#### COLONIAL DEVELOPMENT AND WELFARE SCHEME AND DEVELOPMENT LOAN

##### EXPENDITURE SCHEME

28. (a) The original Ten-Year Development Plan was amended, and a new plan to cover the next five years was prepared, subsequent to consultation with the Regional Development Committees. After much consideration it was decided to abandon the

original scheme, which provided for inter-regional trunks by rebuilding the overhead routes. These routes will be replaced, instead, by Very High Frequency (V.H.F.) Radio Links. This revised scheme is one of the most up-to-date in telecommunications engineering and is ideally suited for Nigeria, where large distances over very difficult terrain are involved. Further advantages are that the new scheme can be installed in far less time, at a cheaper capital cost, and is less liable to interruption.

(b) Buildings are now being erected to contain the pilot link of the V.H.F. system—the Lagos-Ibadan twelve-channel Radio Trunk—which, it is hoped, will be placed in service in March 1952. The Departmental plans for the other Main Link channels have been prepared and orders placed with the manufacturers of the equipment. The contractor's survey team will arrive in the country in 1951 for consultation and to co-ordinate these plans.

(c) The progress made on other works for which financial provision was made under the two schemes was as follows :

- (i) *Carrier Equipment*.—Work completed at Kaduna, Enugu, Benin City and Kutawenji and telephone trunk service connecting Lagos, Oshogbo, Enugu and Kaduna introduced.
- (ii) *Kano-Katsina Trunk*.—Work completed and telephone service introduced.
- (iii) *Gusau-Sokoto Trunk and Telegraph*.—Work completed and telephone service introduced.
- (iv) *Sapele-Kwale Trunk and Telegraph*.—Some stores received and sent to construction site in readiness for commencement of work.
- (v) *Ijebu Ode-Shagamu Trunk and Telegraph*.—Work completed and telephone and telegraph service introduced.
- (vi) *Akure-Ondo Trunk*.—Work completed and telephone service introduced.
- (vii) *Port Harcourt-Degema Trunk and Telegraph*.—Work completed and telephone service introduced.
- (viii) *Automatic Telephone Exchange, Port Harcourt*.—Work completed and Exchange opened for service in November 1950.
- (ix) *Radio Telephone Circuits*.—The Port Harcourt-Bori-Brass link was completed.
- (x) *Teleprinters*.—Teleprinter working introduced between Lagos and Enugu. Further progress awaits receipt of machines.
- (xi) *Uyo-Arochuku Trunk and Telegraph*.—Work completed and telephone and telegraph services introduced.
- (xii) *Enugu-Abakaliki Trunk*.—Work commenced and erection of trunk lines along the Railway section of the route completed.
- (xiii) *Enugu-Onitsha Additional Trunks*.—Some stores received and sent to construction site in readiness for commencement of work.
- (xiv) *V.H.F. Radio Trunks, Lagos-Ibadan, Lagos-Badagry-Idiroko*.—Buildings in course of erection for the Lagos-Ibadan Link. Contracts placed with the manufacturing firm for the supply of equipment and installation.
- (xv) *Automatic Telephone Exchange, Lagos*.—Part of equipment received. Remainder is stored by the manufacturing firm in the United Kingdom awaiting completion of the Exchange buildings.

## WORK DONE FOR OTHER DEPARTMENTS

29. In addition to the development of its own services the Department carried out the undermentioned works and maintenance for other Departments:—

(a) *Railway*.—Radio telegraph and telephone links for the Railway between Ebute Metta, Zaria and Enugu were maintained.

(b) *Marine*.—The radio equipment on the “Dayspring” was renewed and facilities were provided on all vessels enabling them to operate by radio-telephone direct from the bridge. The Marine Department radio link between Lagos and Port Harcourt and wireless communication between Lagos Headquarters and ships at sea were maintained satisfactorily.

(c) *Police*.—Wireless stations for the Nigeria Police were established at Kaduna, Enugu and Ibadan. These are linked up inter-regionally and with Lagos. In the Eastern Region a network of stations was established, consisting of Onitsha, Abakaliki and Port Harcourt; two further stations at Umuahia and Calabar, at present under construction, will be added to this network, when completed. Buildings for a similar network in the Western Region are under construction at Abeokuta, Ijebu-Ode, Benin City and Warri. In Lagos, the V.H.F. radio telephone service between Police Headquarters and Police Vans (“999”), was extended to include three Police Stations.

(d) *Aviation*.—The Department maintains and operates sixteen stations providing aeradio circuits for the Aviation service. Five of the stations—Lagos, Kano, Maiduguri, Jos and Port Harcourt, maintain wireless guards for aircraft with direction-finding facilities. Radio beacons are in operation at all stations. Lagos and Kano stations are responsible for the reception and transmission of meteorological information to and from many stations in Africa and Europe. The average number of messages received and transmitted per month by these two stations was 64,000 and 31,000 respectively.

## WORKSHOPS AND MOTOR TRANSPORT

30. (a) Lack of space has now become a critical problem and is severely handicapping the Workshops activities. For example, only one pit is available for servicing and repair of a continually increasing number of Departmental motor vehicles.

(b) There was a slight decrease in the number of routine repairs and in the manufacture of Postal furniture, telecommunications apparatus, etc. Building of bodies for new Departmental vehicles, including a Mobile Post Office, was in progress throughout the year; the bulk of this work had to be done in the open.

(c) The Departmental motor fleet consisted of forty-nine vehicles in Lagos and eleven Postal Vans at out stations in the Regions (including the Cameroons). The total mileage covered by all Departmental vehicles was 360,000 miles, an increase of 15 per cent over last year.

## ACCOUNTS BRANCH

### MAIN OFFICE

31. In all sections of the Accounts Branch work continued to expand in proportion to the increased volume of public business transacted. In the early part of the year working conditions were most difficult owing to overcrowding in the old offices over the General Post Office. The position was relieved when the new Headquarters

building was occupied. Accommodation for the Savings Bank staff in the new building is still very cramped but this will be remedied once the mechanisation programme is in full operation and redundant staff transferred.

#### STORES

32. On 31st March, 1951, the value of Unallocated Stores stock was £404,367, an increase of approximately £145,300 on last year's figure. These stores are mainly composed of equipment for the Department's development schemes, although there is also a fair amount of maintenance plant for the Aviation and various other Departments. Large quantities of stores continue to arrive from the United Kingdom and lack of adequate storage space is becoming an acute problem. The situation will be relieved, to some extent, by the opening of the Unallocated Sub-Store at Kaduna. The real solution to the Department's storage problem, however, is the erection of the proposed new Unallocated Stores building at Apapa. Plans for this building have now been drawn up and a suitable site at Apapa has been secured.

#### STAFF

##### HONOURS

33. (a) His Majesty the King was graciously pleased to appoint Mr P. A. Courtney, Director, a Commander of the Most Excellent Order of the British Empire.

(b) His Excellency the Governor awarded Certificates of Honour to Messrs P. D. Ajulu, Inspector, Grade II, and Samuel Ladipo, Messenger.

##### SENIOR SERVICE—ENGINEERING BRANCH

34. (a) During the year, a considerable number of appointments, both expatriate and non-expatriate, were made in the various grades of the Department's Engineering Branch. At the end of the year there were still twenty vacancies in the total approved establishment of 114. A disquieting feature is the number of Engineering officers with only a few years' experience of the country: of eighty-two expatriate officers only seven were appointed before the war, and two of these are retiring soon.

(b) The serious deficiency of Wireless Station Superintendents mentioned in last year's report was completely eliminated by new appointments, and, for the first time since the end of the war, this grade was up to full establishment. Similar conditions prevail in the Radio Officer and Workshop Grades. Difficulty still obtains in securing candidates to fill the three vacancies for Technical Instructors at the Departmental Technical School.

(c) The position in the Engineer grade remained static; new recruitment being balanced by retirements. Vacancies in the Inspector grade were filled by promotions from the Junior Service.

(d) Mr J. W. Jehu was appointed Deputy Director (Engineer-in-Chief). There was one transfer during the year—that of Mr R. W. Stephens, Assistant Engineer-in-Chief, who took up appointment as Director of Posts and Telegraphs, North Borneo.

##### SENIOR SERVICE—POSTAL AND ACCOUNTS BRANCH

35. The staff position was, again, fairly satisfactory. Three Postal Inspectors and one Storekeeper were appointed to fill vacancies. Mr R. E. G. Wilkins, Deputy Director (Posts and Accounts) was promoted on transfer to the appointment of Postmaster-General, Gold Coast Colony. The vacancy was filled by the promotion of Mr L. R. Langridge.

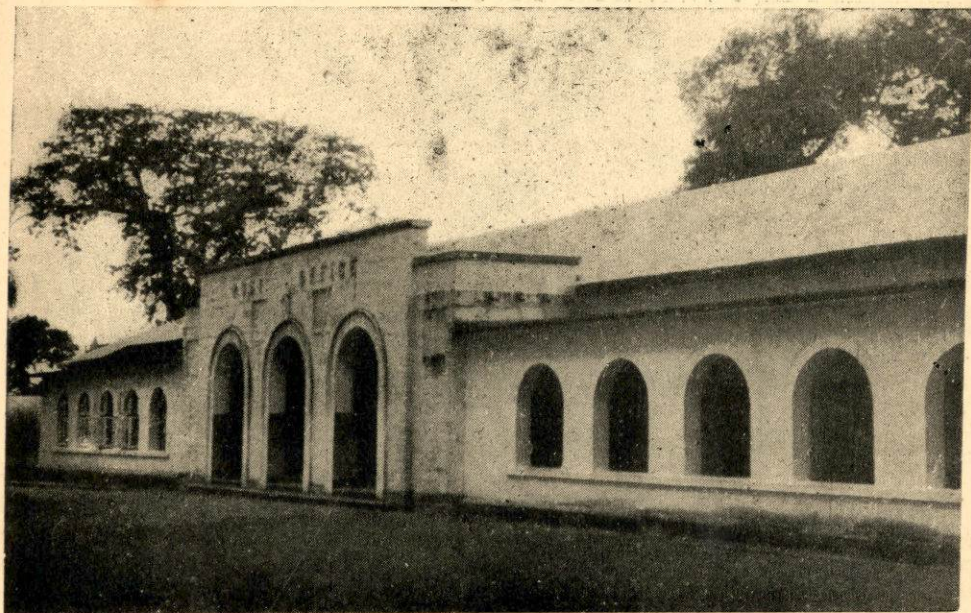
(b) There were burglaries at eight Postal Agencies and eight Post Offices during the year.

## CONCLUSION

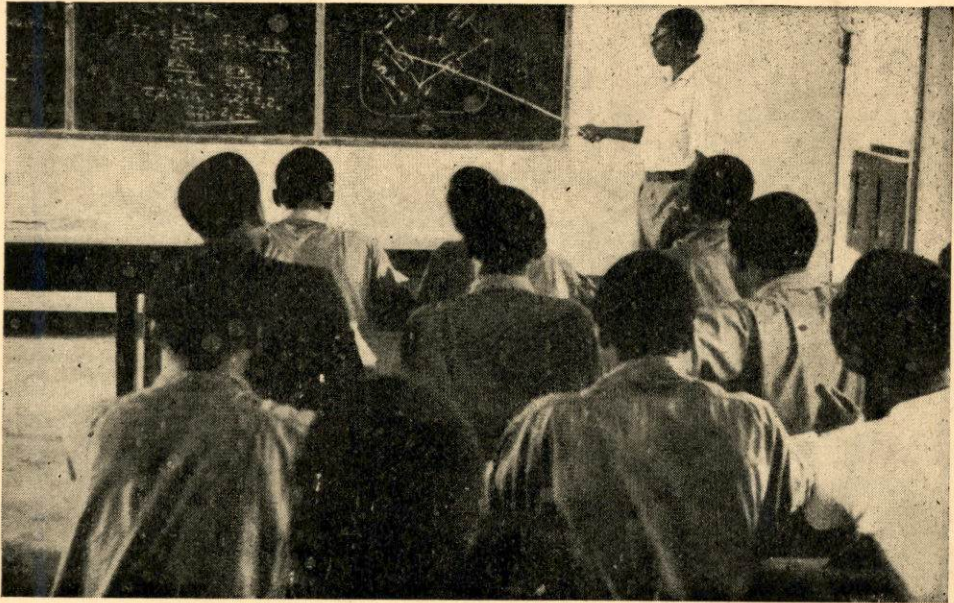
45. (a) The public services provided by the Postal Branch, and particularly the mail services, were maintained at a high level, despite the fact that there was considerable strain placed on the organisation, because of the upward trend of business and by the difficulty of providing trained and experienced staff for such specialised duties as teleprinter and morse telegraphy and superior Counter work. It was not always possible to effect desirable improvement in Counter services at the older, non-standard Post Offices, owing to the inadequate accommodation both for the public and the staff. It is true to say, also, that the transmission of telegrams over the system still takes a long time; but, there was a speeding up, especially between the main transmitting offices. In a succeeding paragraph the problem of the ultimate efficiency of the telegram delivery service, which can only be assured by an efficient telecommunications system, is examined. For the future, continued expansion of all classes of Postal business must be anticipated. Among the enhanced services that, in prospect, will have to be provided, are Telegraph Money Orders, Savings Bank facilities at Postal Agencies, additional Postal Agencies, more house-to-house and rural postal deliveries of correspondence, increased numbers of Private Letter Boxes at Post Offices, Regional Mobile Post Offices and more staff for Counters and the Overseas Parcels Offices. It can be said with confidence that these objectives are within the capacity of the Postal Branch to fulfil.

(b) Accounts Branch organisation and methods have kept abreast of the advancing business performed at Post Offices. Despite pressure, and the need to conform to rigid time-tables for the presentation of Government and External accounts, investigation was made of the application of mechanised accounting to the systems of the Branch, including the Stores. There can be little doubt that the mounting volume of intricate accounting work will, at some future date, be dependent upon mechanisation for efficiency.

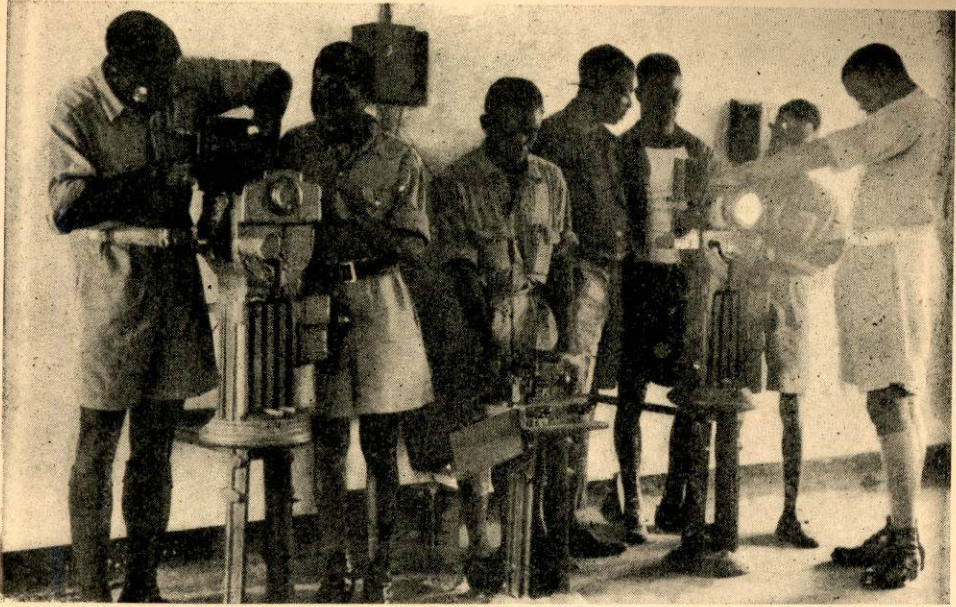
(c) The heartening progress of new constructional works for the telecommunications system, of which the completion of the Port Harcourt Automatic Exchange and installation of Carrier equipment in the Regions were prominent features, has given quiet satisfaction. Urban areas have not been neglected, as the record of new telephone trunk and telegraph routes shown in paragraph 28 confirms. Generally, much has been accomplished but the major development of the system awaits. Mention has been made in the paragraph of the adoption of the V.H.F. Radio Trunk Scheme. A very great deal of Departmental research work, including consultation and survey of equipment, was undertaken in connection with the decision to introduce this modern type of telecommunications. Working details were quickly prepared, resulting in the early placing of a contract for the installation of the first Link—the Lagos-Ibadan Radio Trunk—within twelve months. The completion of the entire scheme, which is designed to incorporate the main net-work of the country, will provide inter-Regional trunks of international standard, as well as speedy and reliable telegraph routes. Much preparatory work for the new Lagos Automatic Exchange is also in course; it has now been planned to increase the capacity from 4,900 to 7,300 subscribers because of increasing demand for service at the opening date. Revision, involving contracts, orders and the disposition of equipment at the Main and satellite Exchanges has, in consequence, been necessary. The progress of the Engineering Branch on Development projects during the year has been noteworthy.



"A" TYPE POST OFFICE



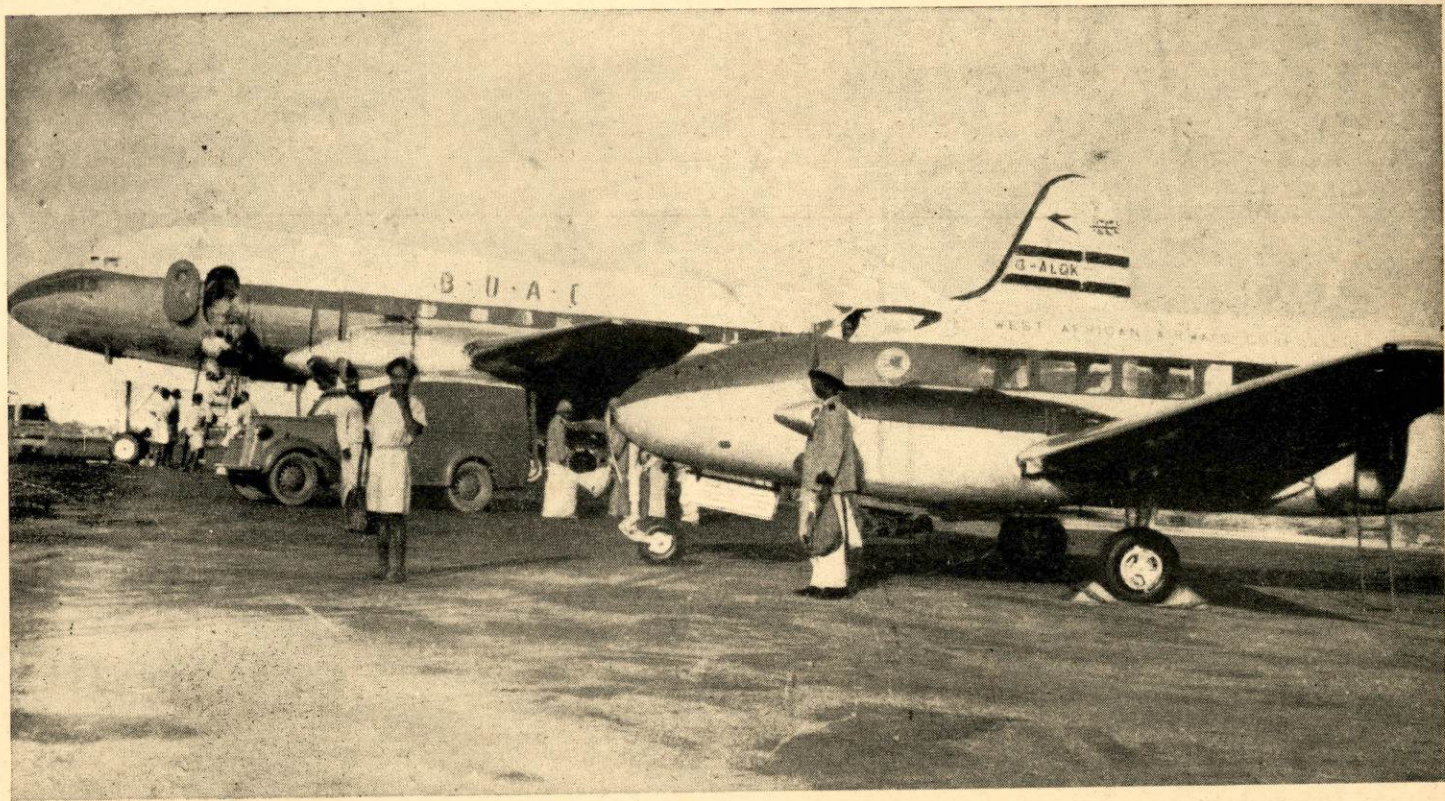
TECHNICAL SCHOOL : LECTURE IN PROGRESS



TECHNICAL SCHOOL. PRACTICAL DEMONSTRATION : ELECTRIC TRAIN STAFF



POSTAL AGENCY



COLLECTING AIRBORNE MAIL

(d) The Posts and Telegraphs Department is constantly in the public mind, by reason of its normal functions. There must, necessarily, be criticism of organisation and action. The public mind, however, is not as readily retentive of significant and even historic facts. It is overlooked, for instance, that Nigeria is the last stronghold of the Penny Post and almost the last of the Shilling Telegram. Charges for many other services offered compare more than favourably with those of other Postal Administrations. It may not be out of place, in these days of rising costs of equipment and maintenance, to sound the warning that a continuance of these happy conditions is unlikely to prevail indefinitely.

(e) Staff worked faithfully in the public service, often performing long hours of duty at night to maintain telecommunications and other essential services.

P. A. COURTNEY,  
*Director of Posts and Telegraphs*

Year	1946-47	1947-48	1948-49
Expenditure on Posts and Telegraphs	1,608,544	1,734,903	1,800,000
Revenue from Posts and Telegraphs	428,121	510,153	510,000
Deficit	1,180,423	1,224,750	1,290,000
Revenue from other sources	3,384	3,073	3,073
Total Revenue	431,505	513,226	513,073
Total Expenditure	1,611,829	1,737,926	1,803,073
Deficit	1,180,324	1,224,700	1,290,000

REVENUE AND EXPENDITURE

## REVENUE AND EXPENDITURE

## APPENDIX I

	Revenue		Expenditure	
	1949-50	1950-51	1949-50	1950-51
	£	£	£	£
Sale of Stamps, etc. . . . .	285,233	316,354	Personal Emoluments and Wages . . . . .	591,416
Commission on Money Orders and Postal Orders	17,932	21,496	Allowances . . . . .	11,064
Share of Postage on Parcels received from Overseas	19,609	26,440	Transport . . . . .	72,497
Postal Clearance Fees . . . . .	5,282	6,317	Equipment . . . . .	32,439
Telegrams . . . . .	117,309	126,303	Mail Services . . . . .	73,240
Registration of Telegraphic Addresses . . . . .			Lighting and Power . . . . .	7,903
Telephone Rentals . . . . .	35,990	44,285	Telecommunications . . . . .	59,074
Telephone Call Fees . . . . .	34,450	37,185	Miscellaneous . . . . .	8,175
Rent of Private Letter Boxes and Bags . . . . .	5,322	6,025	Excess of Payment for Stores purchased over value of issues . . . . .	152,436
Radio Distribution Service . . . . .	26,702	31,213		249,375
Miscellaneous . . . . .	2,264	2,032		
Posts and Telegraphs Revenue . . . . .	550,093	617,650		
Excess of Recurrent Expenditure over Revenue	458,151	716,352		
	£	£	Total Recurrent Posts and Telegraphs Expenditure . . . . .	1,008,244
	1,008,244	1,334,002	Special Expenditure . . . . .	66,200
				117,829

*Note.*—The above figures represent the net revenue credited to, and expenditure charged to, Posts and Telegraphs Sub-heads and do not include the value of free services rendered by, or to, the Department. The Revenue figures do not necessarily agree with those detailed in the Appendices which indicate gross earnings and ignore refunds and other similar adjustments.



APPENDIX III

AMOUNTS COLLECTED OR EARNED AND CREDITED TO NON-DEPARTMENTAL REVENUE

<i>Details of Service</i>	1949-50	1950-51
	£	£
Import Duties collected .. .. .	156 953	179,801
Wireless Licences Issued .. .. .	1,469	1,363
Sale of Mepacrine, etc. .. .. .	2,275	2,154
Sale of Posts and Telegraphs Allocated Stores .. .. .	68	16
Sale of Posts and Telegraphs Unallocated Stores .. .. .	3,847	3,942
Services to Railway .. .. .	21,813	22,965
Services to Post Office Savings Bank .. .. .	18,473	20,573
	£ 204,898	230,814

APPENDIX IV

ESTIMATED VALUE OF OFFICIAL SERVICES FOR WHICH NO PAYMENTS WERE RECEIVED

<i>Year</i>	<i>Postal</i> (a)	<i>Telegraph</i> (b)	<i>Telephone</i> (c)	<i>Civil Aviation</i>	<i>Radio Distribution Service</i>	<i>Total</i>
	£	£	£	£	£	£
1949-50 ..	163,816	47,278	44,837	72,000	234	328,165
1950-51 ..	197,145	45,400	54,306	76,000	342	373,193

(a) Includes rental of official mail bags (£796). See Appendix VI (e)

(b) Includes registration fees for official telegraphic addresses £193—See also Appendix IX.

(c) See Appendix XI.

APPENDIX V

POSTS AND TELEGRAPHS OFFICES AND POSTAL AGENCIES

<i>Class of Office</i>	<i>Number in Service as at:</i>	
	31st March, 1950	31st March, 1951
Telegraph, Money Order and Savings Bank Offices .. .. .	134	138
Postal Agencies .. .. .	420	456
Total .. .. .	554	594

Telegraph facilities were available at twelve Private Postal Agencies and at fifty-six Railway Agencies.

## A.—POSTAL ARTICLES HANDLED

	1949-50	1950-51
(a) Estimated number of Postal Articles posted in Nigeria :—		
Letters and Postcards .. .. .	38,344,500	46,637,100
Newspapers and Packets .. .. .	3,000,900	3,665,300
Registered Articles .. .. .	1,826,300	2,460,000
Parcels .. .. .	190,500	238,500
<b>Total .. .. .</b>	<b>43,362,200</b>	<b>53,000,900</b>
(b) Estimated number of Postal Articles received from abroad :—		
Air Mail .. .. .	2,724,200	3,324,200
Other Letters and Postcards .. .. .	1,932,200	1,872,800
Newspapers and Packets .. .. .	5,342,100	5,359,500
Registered Articles .. .. .	98,000	95,700
Parcels .. .. .	153,200	175,300
<b>Total .. .. .</b>	<b>10,249,700</b>	<b>10,827,500</b>
<b>Estimated number of Postal Articles dealt with—Total .. .. .</b>	<b>53,611,900</b>	<b>63,828,400</b>
(c) Estimated number of Postal Articles despatched abroad, included in (a)		
Air Mail .. .. .	3,237,100	3,443,800
Other Letters and Postcards .. .. .	2,387,200	1,898,800
Newspapers and Packets .. .. .	463,800	434,500
Registered Articles .. .. .	102,500	79,100
Parcels .. .. .	44,900	36,800
<b>Total .. .. .</b>	<b>6,235,500</b>	<b>5,893,000</b>
(d) Estimated number of Postal Articles posted for Internal delivery, included in (a) :		
Letters and Postcards .. .. .	32,720,200	41,294,500
Newspapers and Packets .. .. .	2,537,100	3,230,800
Registered Articles .. .. .	1,723,800	2,380,900
Parcels .. .. .	145,600	201,700
<b>Total .. .. .</b>	<b>37,126,700</b>	<b>47,107,900</b>

	1949-50		1950-51	
	Number	Postage Value	Number	Postage Value
		£		£
(e) Estimated number and Postage Value of official Postal Articles posted, included in (a) :				
Ordinary Letters .. .. .	2,459,100	28,177	3,305,600	37,877
Registered Articles .. .. .	542,400	13,561	678,100	16,952
Newspapers and Packets .. .. .	954,500	121,306	1,113,600	141,520
<b>Total .. .. .</b>	<b>3,956,000</b>	<b>163,044</b>	<b>5,097,300</b>	<b>196,349</b>

## B.—NUMBER AND VALUE OF OVERSEAS PARCELS AND SUSPECTED LETTER PACKETS IMPORTED AND CUSTOMS DUES COLLECTED

Year	Number of Parcels and Packets imported	Value	Customs Dues collected
1949-50 .. .. .	164,609	£ 781,116	£ 158,212
1950-51 .. .. .	192,235	995,216	182,860

## C.—OVERSEAS CASH ON DELIVERY PARCELS SERVICE

Year	No. of Parcels delivered	Trade Charges collected	No. of Parcels returned unclaimed	Value of Trade Charges on Returned Parcels
1949-50 .. .. .	54,143	£ 233,981	3,443	£ 18,685
1950-51 .. .. .	68,795	311,294	3,346	19,084

(a)

## D.—RETURNED LETTER OFFICE

Details	Number of Articles handled 1949-50			Number of Articles handled 1950-51		
	Registered	Ordinary	Total	Registered	Ordinary	Total
Dealt with .. .. .	5,706	221,073	226,779	6,025	166,288	172,313
Returned to sender .. .. .	4,152	19,792	23,944	4,265	10,233	14,498
Unreturnable .. .. .	1,554	201,281	202,835	1,760	156,055	157,815

(b)

1949-50

1950-51

Details	Value of Remittances enclosed in Articles			No. of Parcels	Value of Remittances enclosed in Articles			No. of Parcels
	£	s	d		£	s	d	
Dealt with .. .. .	4,910	15	0	893	6,257	15	5	1,301
Returned to sender .. .. .	3,443	5	8½	584	4,294	7	9½	165
Unreturnable .. .. .	1,467	9	3½	309	1,963	7	8	1,136

A.—STATEMENT OF MONEY ORDER TRANSACTIONS

APPENDIX VII

	1949-50			1950-51				1949-50			1950-51		
	£	s	d	£	s	d		£	s	d	£	s	d
Money Orders outstanding and in transit at the beginning of the year	91,881	14	2	99,050	14	6½	Total value of Money Orders issued by offices in Nigeria on :—						
Adjustments	7	14	6	261	3	8	United Kingdom	100,640	5	4½	105,512	13	6
Total value of Money Orders issued in the Colony during the year	4,115,208	3	7	5,315,575	5	11½	Gold Coast	10,166	10	6	10,034	15	4
Total value of Money Orders drawn on the Colony by the :—							Sierra Leone	6,707	16	7	6,008	3	1
United Kingdom	14,083	3	5	15,207	6	1	Gambia	24	9	4	39	15	0
Gold Coast	22,970	0	9	26,489	19	8	South Africa	1,237	2	3	1,573	7	3
Sierra Leone	12,605	0	2	9,097	6	5	Adjustments	2	0	0	—		
Gambia	275	7	9	241	19	5	Total value of Money Orders paid in the Colony during the year	4,039,514	1	10	5,182,231	17	5
South Africa	300	16	7	165	4	2	Repaid and Void Money Orders	404	3	3	410	1	9
Re-allowed to Colony	415	2	9	722	19	4	Total value of Money Orders outstanding and in transit at the end of the year	99,050	14	6½	161,001	5	11
	£							£			£		
	4,257,747	3	8	5,466,811	19	3		4,257,747	3	8	5,466,811	19	3

21

B.—MONEY ORDER COMMISSION ACCOUNT

	1949-50			1950-51				1949-50			1950-51		
	£	s	d	£	s	d		£	s	d	£	s	d
Total value of Commission on Money Orders collected during the year	9,634	19	11	11,492	17	5	Total share of Commission on Money Orders issued by the Colony due to :—						
Total value of Colony's share of commission on Money Orders drawn on the Colony by the :—							United Kingdom	503	3	10	527	11	6
United Kingdom	70	8	4	76	0	8	Gold Coast	50	16	10	50	3	8
Gold Coast	114	17	1	132	9	1	Sierra Leone	33	10	10	30	0	10
Sierra Leone	63	0	5	45	9	9	Gambia	0	2	5	0	4	0
Gambia	1	7	7	1	4	2	South Africa	6	4	9	8	0	5
South Africa	1	15	1	1	0	7	Net Revenue derived from Money Order Commission	9,292	9	9	11,133	1	3
	£							£			£		
	9,886	8	5	11,749	1	8		9,886	8	5	11,749	1	8

APPENDIX VIII

STATEMENT SHOWING NUMBER AND VALUE OF BRITISH POSTAL ORDERS ISSUED AND PAID

Year	Issued			Paid		Allowance by the United Kingdom for Issued and Paid Postal Orders	Uncashed Postal Orders credited to Revenue
	Number	Value	Colony's share of Commission	Number	Value		
1949-50	1,261,426	£ 918,452	£ 4 455	1,149,333	£ 857,394	£ 2,411	£ 1,189
1950-51	1,513,224	1,116,482	5,358	1,308,132	984 408	2,821	333

APPENDIX IX

TELEGRAPH TRAFFIC AND REVENUE

	1949-50		1950-51	
	Number	Revenue collected	Number	Revenue collected
<i>Paid Traffic</i>				
Forwarded Internal .. .. .	1,403,649	£ 111,400	1,548,222	£ 118,116
Forwarded to French West Africa Colonies .. .. .	4,103	819	6,089	1,192
External Telegrams* .. .. .	40,346	2,250	45,919	3,406
Received from French West Africa Colonies .. .. .	3,642	—	3,745	—
Received from Cable and Wireless Limited .. .. .	30,060	2,034	36,763	3,142
		£116,503		£125,856
<i>Official Traffic</i>				
Forwarded Internal .. .. .	472,786	—	453,454	—
Forwarded to French West Africa Colonies .. .. .	392	—	53	—
Forwarded to Cable and Wireless Limited .. .. .	5,873	—	5,543	—
Received from French West Africa Colonies .. .. .	85	—	95	—
Received from Cable and Wireless Limited .. .. .	698	—	790	—
Total .. .. .	1,961,634	—	2,100,673	—

\* Posts and Telegraphs Proportion of Revenue.

APPENDIX X

TELEPHONE TRAFFIC AND REVENUE

Year	Local Calls (Lagos only)		Trunk Calls		Overseas Radio Calls		Revenue Rentals	Total Revenue
	No.	Revenue	No.	Revenue	No.	Revenue		
1949-50	1,579,506	£ 6,645	700,931	£ 27,584	968	£ 221	£ 35,990	£ 70,440
1950-51	1,728,357	7,274	815,091	29,911	867	204	44,285	81,674

APPENDIX XI

VALUE OF TELEPHONE SERVICES RENDERED TO GOVERNMENT DEPARTMENTS FOR THE YEAR 1950-51

No.	Name of Department	Rental 1949-50	Rental 1950-51	Trunk Calls and Call Fees 1950-51	Total 1950-51
		£	£	£	£
1	Government House .. .. .	95	101	15	116
2	Accountant-General .. .. .	448	711	934	1,645
3	Administrator-General .. .. .	37	45	7	52
4	Administrative .. .. .	4,088	4,377	6,190	10,567
5	Agriculture .. .. .	1,297	1,229	1,595	2,824
6	Audit .. .. .	195	213	86	299
7	Aviation .. .. .	739	770	1,250	2,020
8	Chemistry .. .. .	28	30	—	30
9	Commerce and Industries .. .. .	365	394	120	514
10	Co-operative .. .. .	101	171	283	454
11	Customs and Excise .. .. .	502	554	265	819
12	Education .. .. .	1,045	1,198	1,482	2,680
13	Electricity .. .. .	889	1,231	157	1,388
14	Forestry .. .. .	500	513	497	1,010
15	Geological Survey .. .. .	80	97	38	135
16	Inland Revenue .. .. .	253	260	70	330
17	Judicial .. .. .	810	875	889	1,764
18	Labour .. .. .	498	558	288	846
19	Land and Survey .. .. .	305	320	182	502
20	Legal .. .. .	162	197	53	250
21	Marine .. .. .	762	774	371	1,145
22	Marketing and Export .. .. .	189	440	552	992
23	Medical .. .. .	3,664	3,834	2,671	6,505
24	Mines .. .. .	218	249	261	510
25	Police .. .. .	2,477	2,710	3,871	6,581
26	Printing .. .. .	176	184	14	198
27	Prisons .. .. .	379	419	217	636
28	Public Relations Office .. .. .	298	398	476	874
29	Public Works .. .. .	2,162	2,361	2,735	5,096
30	Secretariat, Nigerian .. .. .	1,011	1,435	1,026	2,461
31	Transport and Oil Control .. .. .	135	116	44	160
32	Statistics .. .. .	85	110	17	127
33	Veterinary .. .. .	320	388	152	540
34	Meteorological .. .. .	—	171	65	236
	TOTAL .. .. .	£ 24,253	27,433	26,873	54,306

APPENDIX XII

INTERNAL PLANT AND EQUIPMENT

(a) TELEPHONES

(b) TELEGRAPHS

Description	1949 Number	1950-51 Number	Description	1949 Number	1950-51 Number
Exchanges .. .. .	72	79	Telegraph Sets, Post Office .. .. .	292*	299
Call Offices .. .. .	89	102	Telegraph Sets, Railway .. .. .	197	197
Instruments .. .. .			E.T.S. Sets, Railway .. .. .	441	439
(a) Official .. .. .	3,812	4,717	Miscellaneous Sets, Railway .. .. .	57†	57
(b) Private .. .. .	3,945	5,298			
(c) Railway .. .. .	482	487			

\* Corrected : 318 shown last year in error.

† Corrected : 27 shown last year in error.

## (c) WIRELESS

## (d) RADIO DISTRIBUTION SERVICES

Description	1949		1950-51		Description	1949		1950-51	
	Number	Number	Number	Number		Number	Number	Number	Number
Fixed Stations .. .. .	41	58	161	192	Centres .. .. .	11	12	9,799	12,786
Land Mobile Stations .. .. .					5				
Marine Vessels .. .. .	184	210	—	32					
Transmitters .. .. .					5	8	Diesel Electric Sets .. .. .		
Receivers .. .. .	14	18	—	43					
Petrol Electric Sets .. .. .					2	2	Petrol Electric Sets .. .. .		
Direction finding Stations .. .. .									
Radio Beacons .. .. .									
Distance Measuring Equipment .. .. .									

## APPENDIX XIII

## EXTERNAL PLANT EQUIPMENT

Year	Pole Miles	Cable Miles	Wire Miles		
			On Poles	In Cables	Total
1949 .. .. .	5,810	214	27,600	7,066	34,666
1950-51 .. .. .	6,266	249	29,664	7,900	37,564

## APPENDIX XIV

## ABSTRACT SHOWING APPORTIONMENT OF MAINTENANCE BETWEEN POST OFFICE TELEGRAPHS, TRUNK TELEPHONES, TELEPHONES, RADIO DISTRIBUTION SERVICE, AND EQUIPMENT FOR RAILWAYS

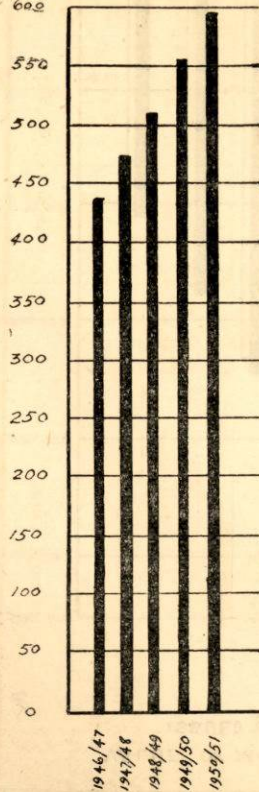
Description	1949		1950-51	
	Wire Miles	Instruments	Wire Miles	Instruments
Telegraphs .. .. .	4,947	292*	4,912	299
Trunk Telephones .. .. .	9,405	—	10,671	—
Private and Official Telephones .. .. .	11,954	7,757	13,266	10,015
Radio Distribution Service .. .. .	556	9,799	873	12,786
Equipment for Railways .. .. .	7,804	1,147	7,842	1,180
Grand Total .. .. .	34,666	18,995	37,564	24,280

\* Corrected : 318 shown last year in error.

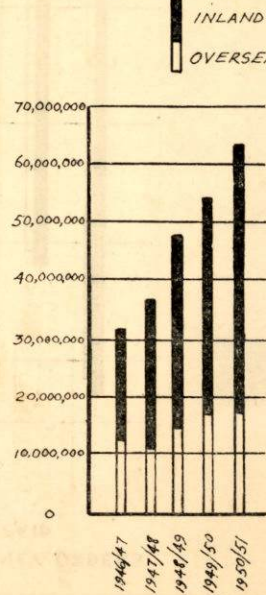
# VISUAL STATISTICS

SHOWING THE TREND OF POST OFFICE BUSINESS SINCE THE END OF THE WAR

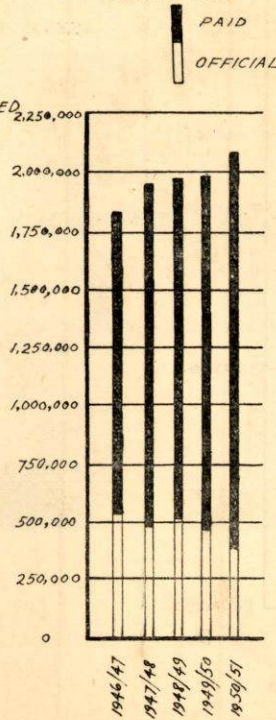
No. OF POST OFFICES & POSTAL AGENCIES



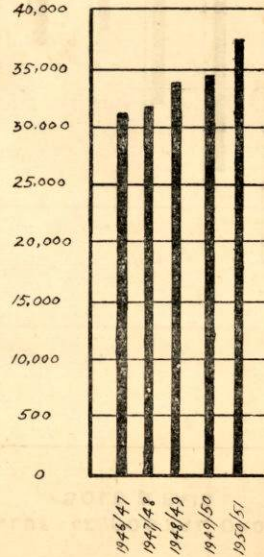
No. OF LETTERS PARCELS, ETC., HANDLED



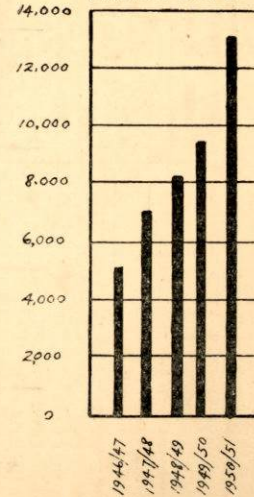
No. OF TELEGRAMS HANDLED



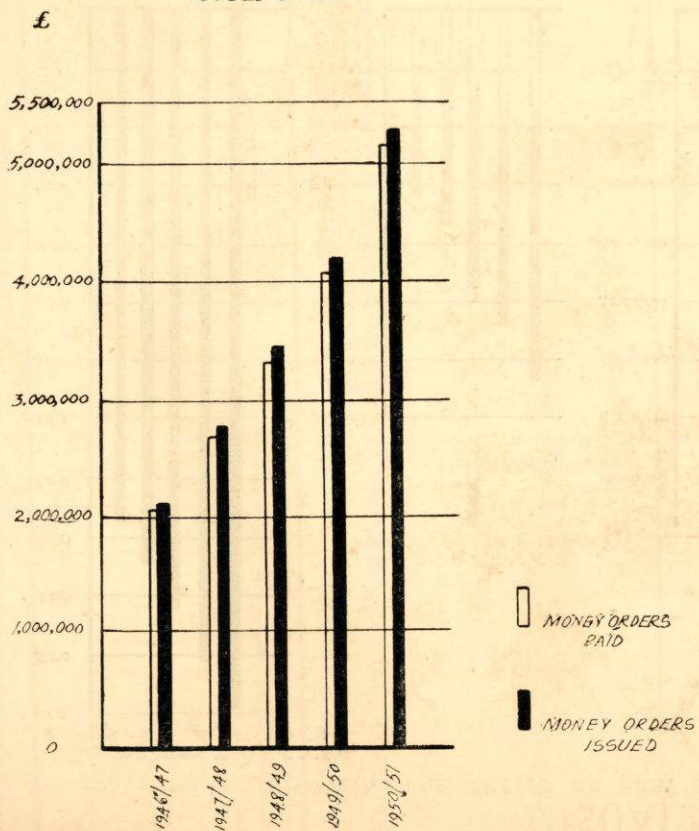
LENGTH OF WIRE MILES



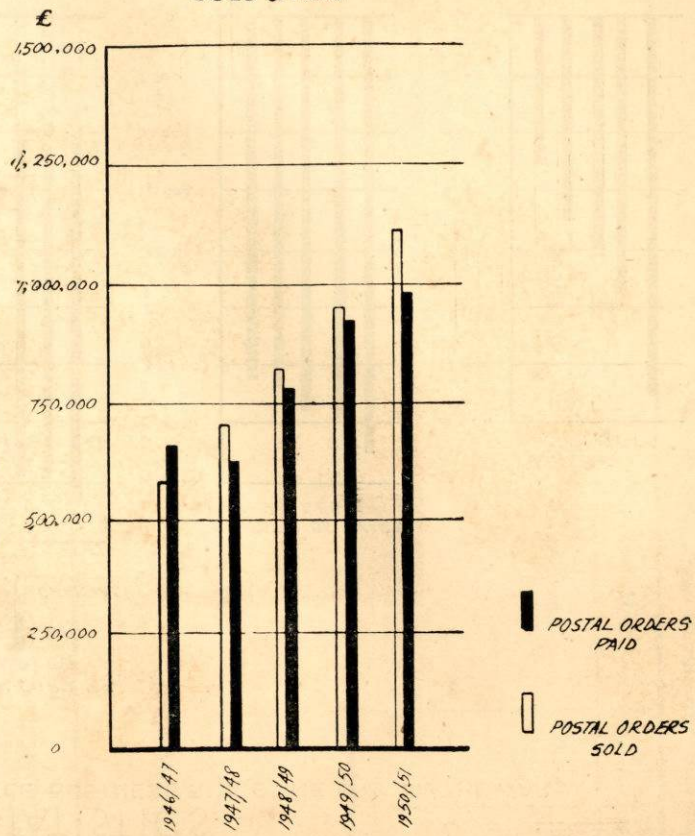
No. OF R.D.S. SETS



VALUE OF MONEY ORDERS  
ISSUED & PAID

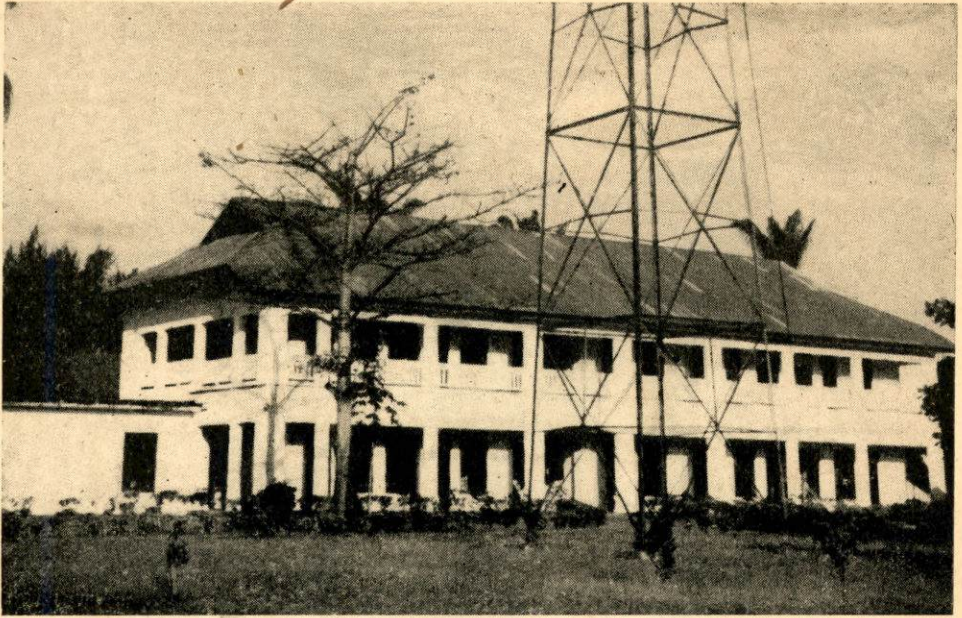


VALUE OF POSTAL ORDERS  
SOLD & PAID





TOWN DELIVERY OF CORRESPONDENCE



PORT HARCOURT AUTOMATIC TELEPHONE EXCHANGE BUILDING

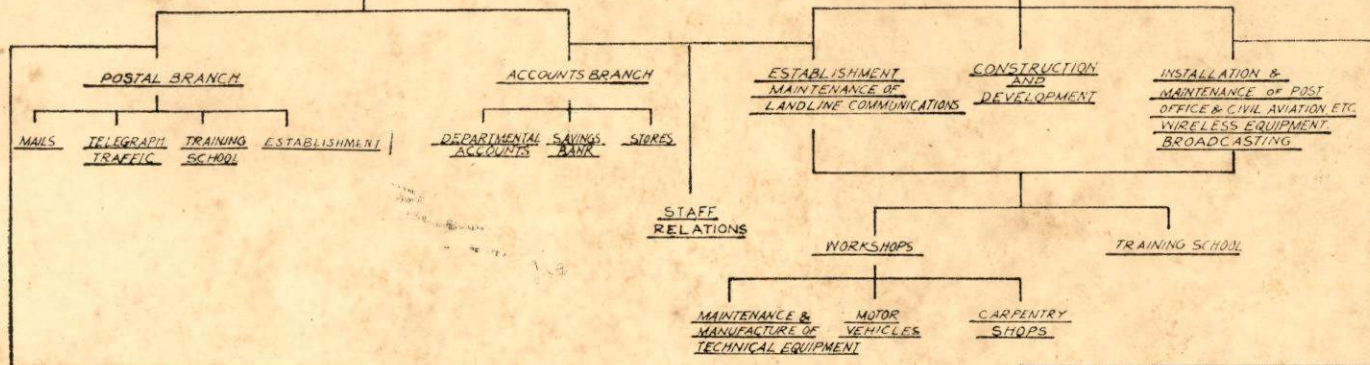


MOBILE POST OFFICE

# DIRECTOR of POSTS & TELEGRAPHS

DEPUTY DIRECTOR  
POSTS & ACCOUNTS

DEPUTY DIRECTOR  
ENGINEER-IN-CHIEF



DIVISIONAL OFFICES  
(LAGOS, ENUGU, IBADAN, KADUNA)  
POSTAL AND ENGINEERING SERVICES WITHIN  
THE REGION

DISTRICT OFFICES (9)

<u>POSTAL SERVICES</u> MAILS PUBLIC COUNTER BUSINESS TELEGRAPH TRAFFIC	<u>ENGINEERING SERVICES</u> INSTALLATION & MAINTENANCE OF EQUIPMENT FOR DEPARTMENTAL TELECOMMUNICATIONS, RAILWAY, POLICE & CIVIL AVIATION RADIO, & RADIO DISTRIBUTION SERVICES OPERATION OF TELEPHONE & CIVIL AVIATION RADIO SERVICES
---	---

POST & TELEGRAPH OFFICES

TELEPHONE  
EXCHANGES

RADIO  
DISTRIBUTION STATIONS

AERADIO  
STATIONS